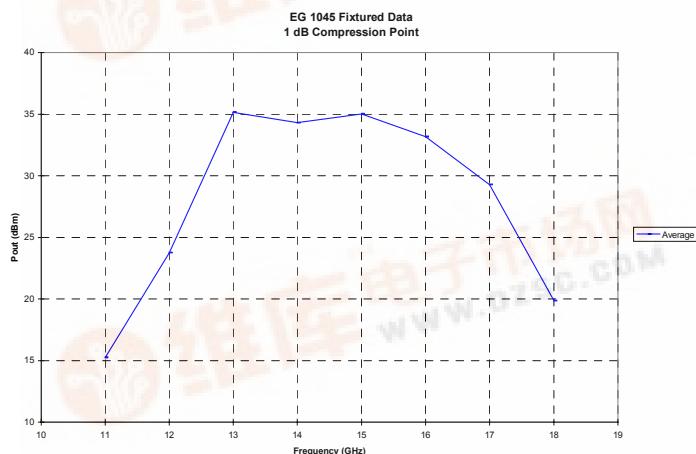


## Ku Band Power Amplifier TGA1045-EPU

### Key Features and Performance

- HFET Technology
- 12.5 -15.5 GHz Frequency Range
- > 3W Nominal Pout
- 24 dB Nominal Gain
- 9V @ 1.2A Bias

| Parameter           | Measured (In Fixture) | Units |
|---------------------|-----------------------|-------|
| FREQUENCY RANGE     | 13.0 - 15.5           | GHz   |
| LINEAR GAIN AT 25°C | 24.0                  | dB    |
| GAIN FLATNESS       | < 2.0                 | dB pp |
| P1dB AT 25°C        | ~34.5                 | dBm   |
| INPUT RETURN LOSS   | > 10                  | dB    |
| OUTPUT RETURN LOSS  | > 8                   | dB    |
| DC VOLTAGE          | +9                    | Volts |
| CURRENT             | 1.2 Small Signal      | A     |
| DC POWER            | 10.8                  | W     |



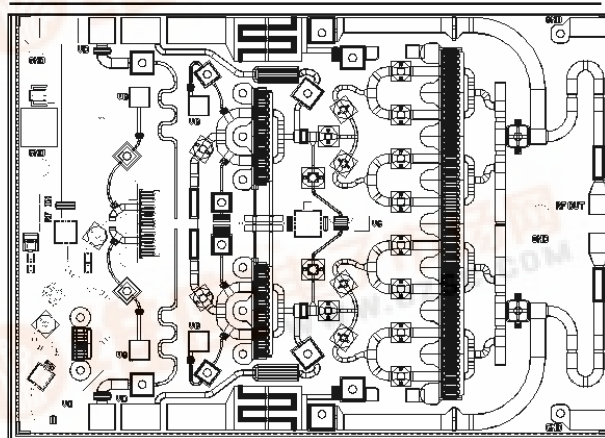
Preliminary Pout Data

### Primary Applications

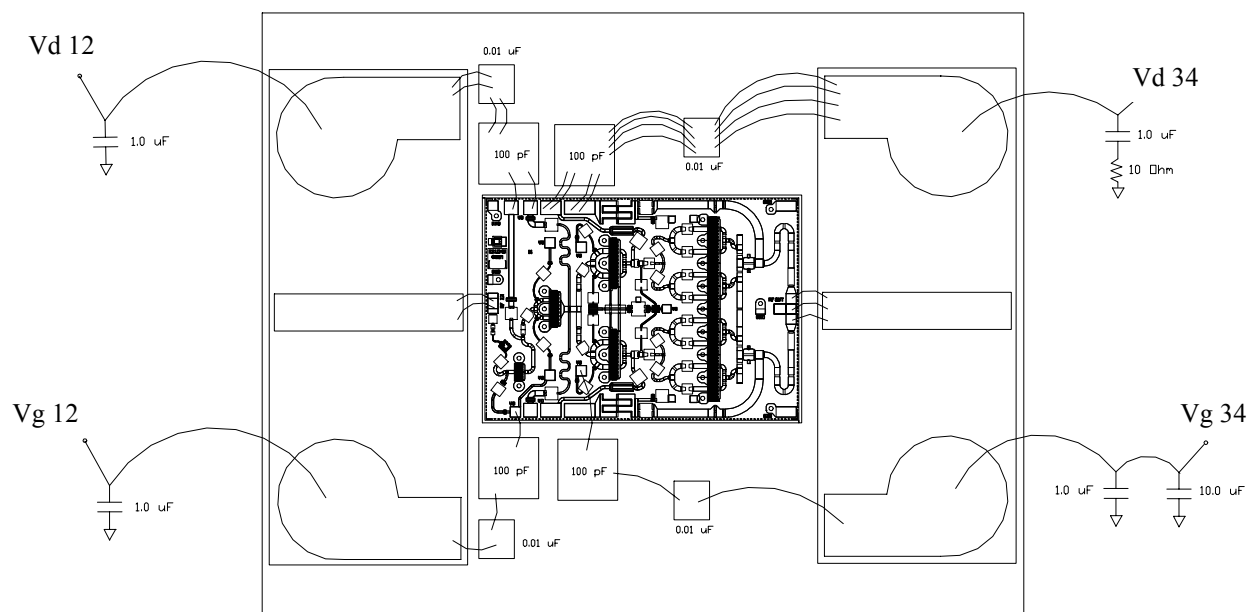
- Ku band Satellite Ground Terminal
- VSAT
- Point-to-Point Radio

### Release Status

- Engineering Prototype Unit (EPU)  
samples available August 1998



Chip Dimensions 4.69 mm x 3.35 mm



**Recommended Assembly Diagram**