

TLP120,-4

GaAs IRED & PHOTO-TRANSISTOR

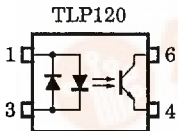
(TLP120)

PROGRAMMABLE CONTROLLERS
AC/DC-INPUT MODULE
TELECOMMUNICATION

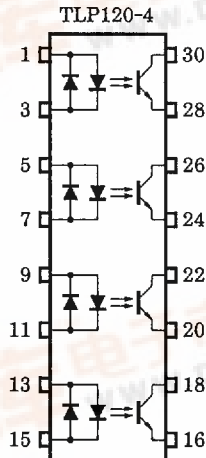
The TOSHIBA MINI FLAT COUPLER TLP120 and TLP120-4 is a small outline coupler, suitable for surface mount assembly. TLP120 and TLP120-4 consists of a photo transistor, optically coupled to two gallium arsenide infrared emitting diode connected inverse parallel, and can operate directly by AC input current. The TLP120-4 provides four isolated channels in a plastic DIP package.

- Collector-Emitter Voltage : 80V (Min.)
- Current Transfer Ratio : 50% (Min.)
Rank GB : 100% (Min.)
- Isolation Voltage : 3750Vrms (Min.)
- UL Recognized : UL1577, File No. E67349

PIN CONFIGURATIONS (TOP VIEW)

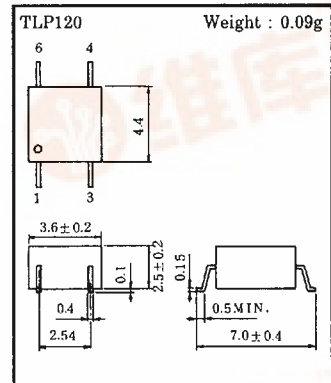


1 : ANODE
3 : CATHODE
4 : EMITTER
6 : COLLECTOR

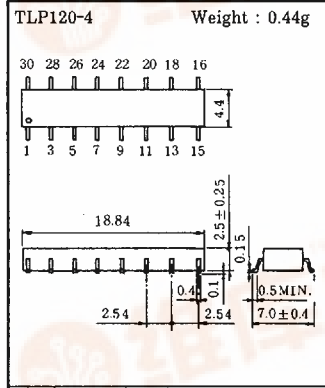


1, 5, 9, 13 : ANODE
3, 7, 11, 15 : CATHODE
16, 20, 24, 28 : EMITTER
18, 22, 26, 30 : COLLECTOR

Unit in mm



JEDEC	—
EIAJ	—
TOSHIBA	11-4C1



JEDEC	—
EIAJ	—
TOSHIBA	11-19B1



(TLP120)

MAXIMUM RATINGS (Ta = 25°C)

CHARACTERISTIC		SYMBOL	RATING		UNIT
			TLP120	TLP120-4	
LED	Forward Current	I _{F(RMS)}	50		mA
	Forward Current Derating	ΔI _F / °C	-0.7 (Ta ≥ 53°C)	-0.5 (Ta ≥ 25°C)	mA / °C
	Pulse Forward Current	I _{FP}	1 (100μs pulse, 100pps)		A
	Junction Temperature	T _j	125		°C
DETECTOR	Collector-Emitter Voltage	V _{CEO}	80		V
	Emitter-Collector Voltage	V _{ECO}	7		V
	Collector Current	I _C	50		mA
	Collector Power Dissipation (1 Circuit)	P _C	150	100	mW
	Collector Power Dissipation Derating (Ta ≥ 25°C, 1 Circuit)	ΔP _C / °C	-1.5	-1.0	mW / °C
	Junction Temperature	T _j	125		°C
	Storage Temperature Range	T _{stg}	-55~125		°C
	Operating Temperature Range	T _{opr}	-55~100		°C
Lead Soldering Temperature	T _{sold}	260 (10 sec.)		°C	
Total Package Power Dissipation	P _T	200	170	mW	
Total Package Power Dissipation Derating (Ta ≥ 25°C, 1 Circuit)	ΔP _T / °C	-2.0	-1.7	mW / °C	
Isolation Voltage	BV _S	3750 (AC, 1 min., RH ≤ 60%) (Note 1)		V _{rms}	

Note 1 : Device considered a two terminal device : LED side pins shorted together and DETECTOR side pins shorted together.

TLP120, -4

(TLP120)

INDIVIDUAL ELECTRICAL CHARACTERISTICS (Ta = 25°C)

CHARACTERISTIC		SYMBOL	TEST CONDITION	MIN.	TYP.	MAX.	UNIT
LED	Forward Voltage	V_F	$I_F = \pm 10\text{mA}$	1.0	1.15	1.3	V
	Capacitance	C_T	$V = 0, f = 1\text{MHz}$	—	60	—	pF
DETECTOR	Collector-Emitter Breakdown Voltage	$V_{(BR)CEO}$	$I_C = 0.5\text{mA}$	80	—	—	V
	Emitter-Collector Breakdown Voltage	$V_{(BR)ECO}$	$I_E = 0.1\text{mA}$	7	—	—	V
	Collector Dark Current	I_{CEO}	$V_{CE} = 48\text{V}$	—	10	100	nA
			$V_{CE} = 48\text{V}, T_a = 85^\circ\text{C}$	—	2	50	μA
Capacitance (Collector to Emitter)	C_{CE}	$V = 0, f = 1\text{MHz}$	—	10	—	pF	

COUPLED ELECTRICAL CHARACTERISTICS (Ta = 25°C)

CHARACTERISTIC	SYMBOL	TEST CONDITION	MIN.	TYP.	MAX.	UNIT
Current Transfer Ratio	I_C / I_F	$I_F = \pm 5\text{mA}, V_{CE} = 5\text{V}$ Rank GB	50	—	600	%
			100	—	600	
Saturated CTR	$I_C / I_{F(sat)}$	$I_F = \pm 1\text{mA}, V_{CE} = 0.4\text{V}$ Rank GB	—	60	—	%
			30	—	—	
Collector-Emitter Saturation Voltage	$V_{CE(sat)}$	$I_C = 2.4\text{mA}, I_F = \pm 8\text{mA}$ $I_C = 0.2\text{mA}, I_F = \pm 1\text{mA}$ Rank GB	—	—	0.4	V
			—	0.2	—	
			—	—	0.4	
Off-State Collector Current	$I_{C(off)}$	$V_F = \pm 0.7\text{V}, V_{CE} = 48\text{V}$	—	1	10	μA
CTR Symmetry	$I_{C(ratio)}$	$I_C (I_F = -5\text{mA}) / I_C (I_F = 5\text{mA})$	0.33	1	3	—

ISOLATION CHARACTERISTICS (Ta = 25°C)

CHARACTERISTIC	SYMBOL	TEST CONDITION	MIN.	TYP.	MAX.	UNIT
Capacitance Input to Output	C_S	$V_S = 0, f = 1\text{MHz}$	—	0.8	—	pF
Isolation Resistance	R_S	$V_S = 500\text{V}$	5×10^{10}	10^{14}	—	Ω
Isolation Voltage	BV_S	AC, 1 minute	3750	—	—	V_{rms}
		AC, 1 second, in oil	—	10000	—	
		DC, 1 minute, in oil	—	10000	—	V_{dc}

(TLP120)

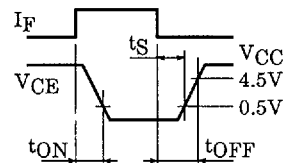
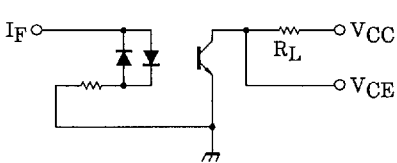
SWITCHING CHARACTERISTICS (Ta = 25°C)

CHARACTERISTIC	SYMBOL	TEST CONDITION	MIN.	TYP.	MAX.	UNIT
Rise Time	t_r	$V_{CC}=10V, I_C=2mA$ $R_L=100\Omega$	—	2	—	μs
Fall Time	t_f		—	3	—	
Turn-on Time	t_{on}		—	3	—	
Turn-off Time	t_{off}		—	3	—	
Turn-on Time	t_{ON}	$R_L=1.9k\Omega$ (Fig.1) $V_{CC}=5V, I_F=\pm 16mA$	—	2	—	μs
Storage Time	t_s		—	25	—	
Turn-off Time	t_{OFF}		—	40	—	

RECOMMENDED OPERATING CONDITIONS

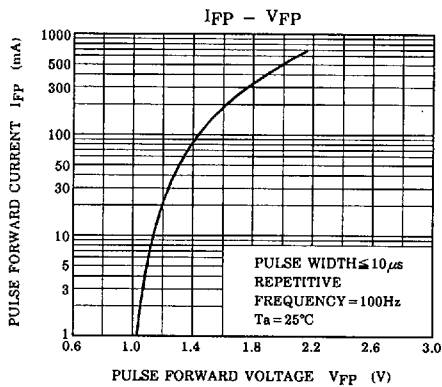
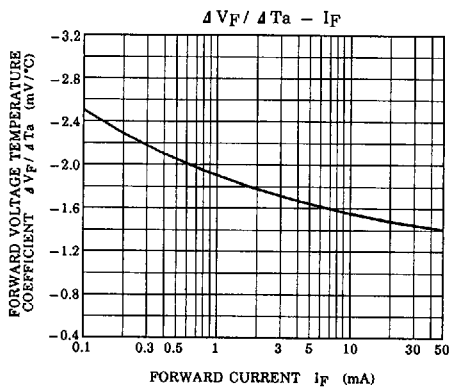
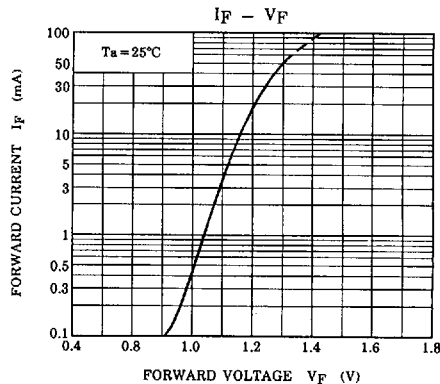
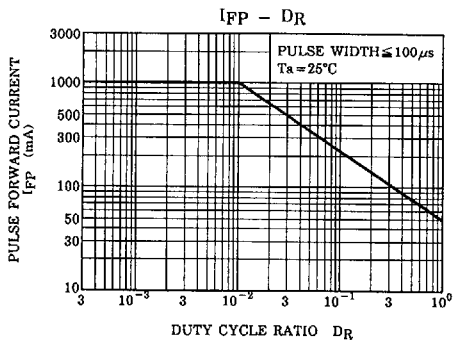
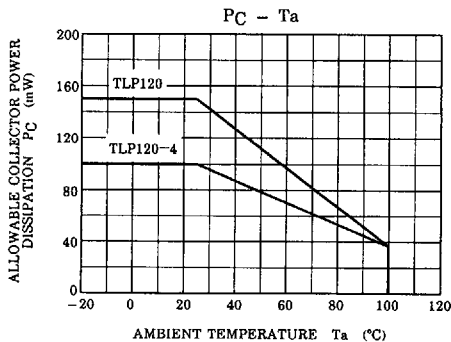
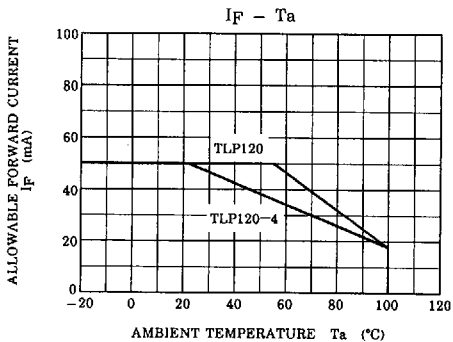
CHARACTERISTIC	SYMBOL	MIN.	TYP.	MAX.	UNIT
Supply Voltage	V_{CC}	—	5	48	V
Forward Current	$I_{F(RMS)}$	—	16	20	mA
Collector Current	I_C	—	1	10	mA
Operating Temperature	T_{opr}	-25	—	85	°C

Fig.1 SWITCHING TIME TEST CIRCUIT

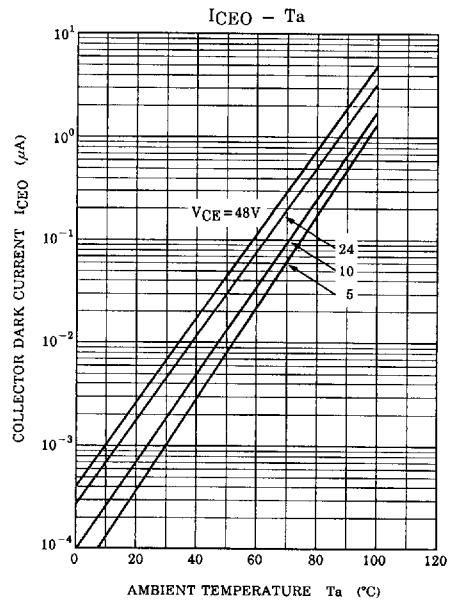
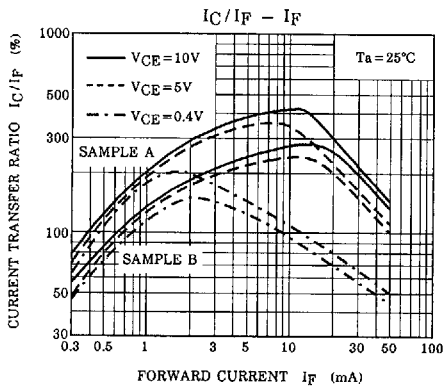
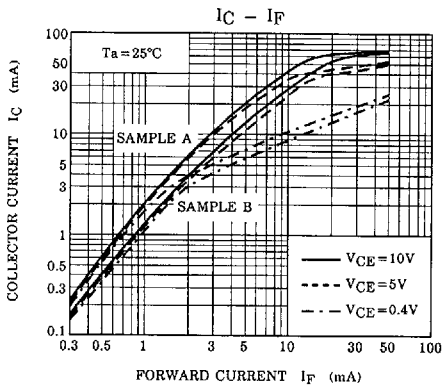
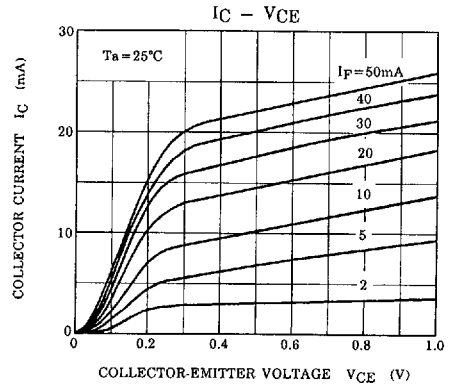
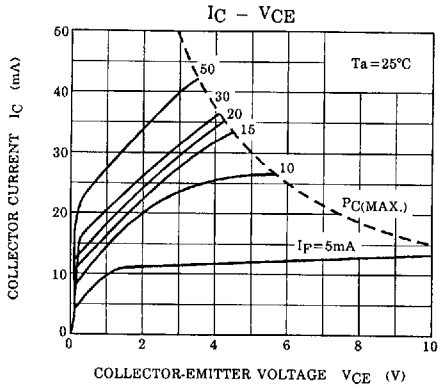


TLP120,-4

(TLP120)



(TLP120)



TLP120, -4

(TLP120)

