

TOSHIBA

TLP1217(C2)

TOSHIBA PHOTOINTERRUPTER INFRARED LED + PHOTO IC

TLP1217(C2)

COPIER, LASER BEAM PRINTER

FACSIMILE, PRINTER, ELECTRONIC TYPEWRITER

AUTOMATIC VENDING MACHINE, TERMINAL EQUIPMENT IN BANKING FACILITIES

VARIOUS POSITION DETECTION SENSOR

The TLP1217 (C2) are digital output photointerrupters having a connector with a GaAs infrared LED and a high sensitivity low current consumption Si photo IC combined. The output becomes low level when the light is shielded.

This product is also usable in applications requiring severe using temperature condition such as detection of paper exit on copier, etc.

- Small package
- Mountable by one touch (Snap-in mounting type)
- Mountable to boards in 2 kinds of thickness (1.0mm, 1.2mm)
- For 5V of power supply voltage
- Digital output (open collector)
- Gap : 5mm
- Resolution : Slit width 0.5mm
- Large operating temperature range : $T_{opr} = -25 \sim 90^{\circ}C$
- Low current consumption : $I_{CC} = 16.5mA$ (Max.)
- UL recongnized PWB adopted : UL94V-0
- Material of the case : Polycarbonate
- Connector
DF3-3P-2DSA (Hirose Electric Co., Ltd. made DF3 series connector)

961001EBC2

● TOSHIBA is continually working to improve the quality and the reliability of its products. Nevertheless, semiconductor devices in general can malfunction or fail due to their inherent electrical sensitivity and vulnerability to physical stress. It is the responsibility of the buyer, when utilizing TOSHIBA products, to observe standards of safety, and to avoid situations in which a malfunction or failure of a TOSHIBA product could cause loss of human life, bodily injury or damage to property. In developing your designs, please ensure that TOSHIBA products are used within specified operating ranges as set forth in the most recent products specifications. Also, please keep in mind the precautions and conditions set forth in the TOSHIBA Semiconductor Reliability Handbook.

● Gallium arsenide (GaAs) is a substance used in the products described in this document. GaAs dust and fumes are toxic. Do not break, cut or pulverize the product, or use chemicals to dissolve them. When disposing of the products, follow the appropriate regulations. Do not dispose of the products with other industrial waste or with domestic garbage.

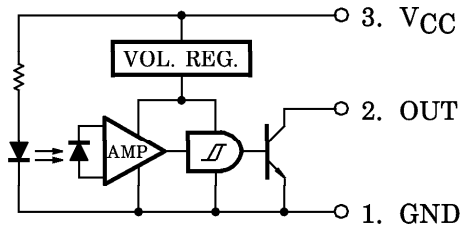
● The products described in this document are subject to foreign exchange and foreign trade control laws.

● The information contained herein is presented only as a guide for the applications of our products. No responsibility is assumed by TOSHIBA CORPORATION for any infringements of intellectual property or other rights of the third parties which may result from its use. No license is granted by implication or otherwise under any intellectual property or other rights of TOSHIBA CORPORATION or others.

● The information contained herein is subject to change without notice.

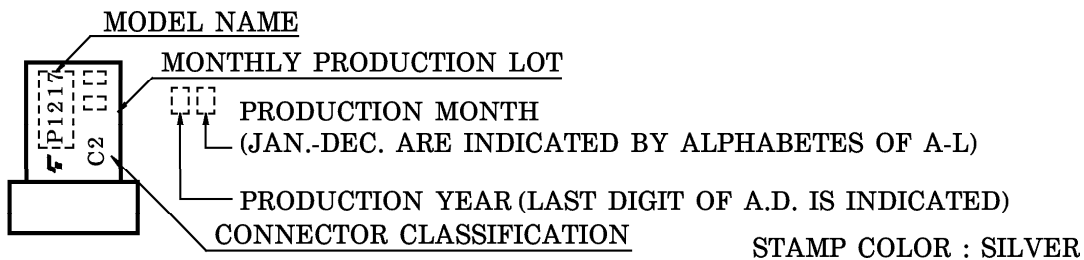


PIN CONNECTION



PRODUCT INDICATION

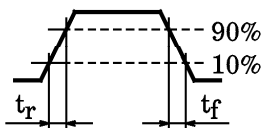
TYPE	ABBREVIATION
TLP1217 (C2)	P1217



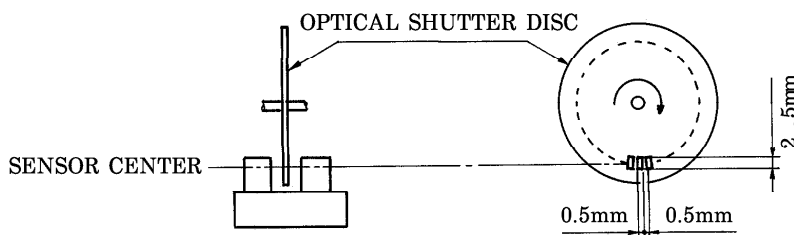
RECOMMENDED OPERATING CONDITIONS

CHARACTERISTIC	SYMBOL	MIN.	TYP.	MAX.	UNIT
Supply Voltage	V_{CC}	4.5	5.0	5.5	V
Output Voltage	V_O	—	5.0	17	V
Low Level Output Current	I_{OL}	—	—	16	mA
Operating Temperature	T_{opr}	-25	—	90	°C

OPTO-ELECTRICAL CHARACTERISTICS (Unless Otherwise Specified, Ta = -25~90°C, VCC = 5V ± 10%)

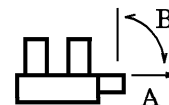
CHARACTERISTIC		SYMBOL	TEST CONDITION	MIN.	TYP.	MAX.	UNIT
Supply Voltage		VCC		4.5	5	5.5	V
Supply Current	High Level	ICCH	Without Shutter	—	—	16.5	mA
	Low Level	ICCL	Shutter In	—	—	16.5	
Output Voltage	High Level	VOH	Without Shutter, RL=47kΩ	0.9VCC	—	—	V
	Low Level	VOL	Shutter In, IOL=16mA, Ta=25°C	—	0.07	0.35	V
Shutter In, IOL=16mA			—	—	0.4		
Peak Emission Wavelength		λP	Ta=25°C	—	940	—	nm
Peak Sensitivity Wavelength		λP	Ta=25°C	—	900	—	nm
Response Frequency		f	RL=47kΩ, Ta=25°C (Note)	3000	—	—	Hz
Rise Time		tr		—	8	—	μs
Fall Time		tf		—	0.03	—	

(Note) A value measured when the disc shown in the following figure was rotated. No DC current should be output.



TERMINAL STRENGTH (Ta = 25°C)

CHARACTERISTIC	TEST CONDITION		LIMIT
PULL	DIRECTION	A	NO DEFECT OF ELECTRICAL CHARACTERISTICS
	WEIGHT	19.6N	
	TIME	5s / ONCE	
BEND	DIRECTION	B	
	WEIGHT	9.8N	
	TIME	5s / THRICE	



PRECAUTION

Please be careful of the followings.

1. During 100 μ s after turning on V_{CC}, output voltage changes for stabilizing the inner circuit.
2. When installing, avoid to work by holding the connector by hand. Always, install by holding the main body of the element while assuring the mounting board is not warped or twisted. The connectors shall be inserted or pulled out at normal temperature.
3. It is recommended to mount this product by inserting from the sheet metal pressed side.
4. The container is made of polycarbonate. Polycarbonate is usually stable with acid, alcohol, and aliphatic hydrocarbons however, with peroxochemicals (such as benzene, toluene, and acetone), alkali, aromatic hydrocarbons, or chloric hydrocarbons, polycarbonate becomes cracked, swollen, or melted. Please take care when choosing a packaging material by referencing the table below.

<Chemicals to avoid with polycarbonate>

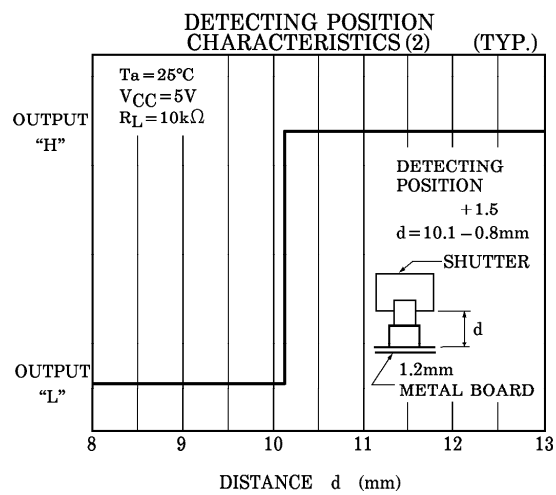
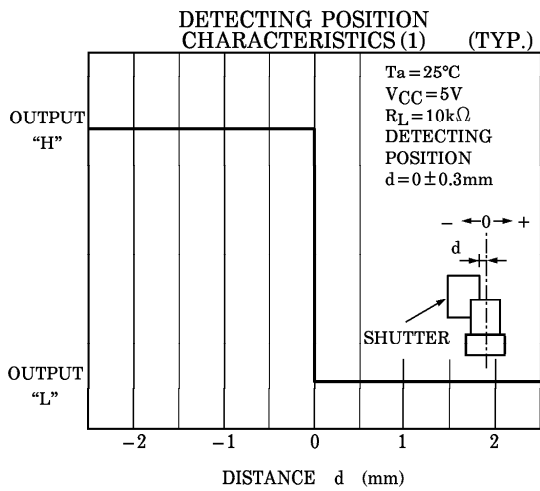
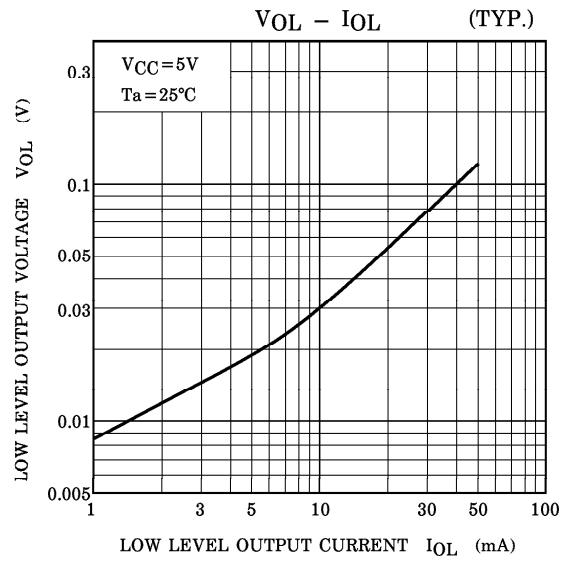
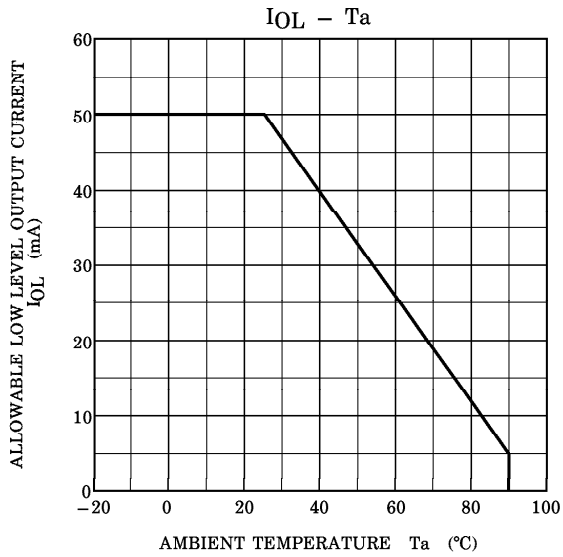
	PHENOMENON	CHEMICALS
A	Little deterioration but staining	<ul style="list-style-type: none"> • nitric acid (low concentration), hydrogen peroxide, chlorine
B	Cracked, crazed, or swollen	<ul style="list-style-type: none"> • acetic acid (70% or more) • gasoline • methyl ethyl ketone, ethyl acetate, butyl acetate • ethyl methacrylate, ethyl ether, MEK • acetone, m-amino alcohol, carbon tetrachloride • carbon disulfide, trichloroethylene, cresol • thinners, oil of turpentine • triethanolamine, TCP, TBP
C	Melted { } : Used as solvent.	<ul style="list-style-type: none"> • concentrated sulfuric acid • benzene • styrene, acrylonitrile, vinyl acetate • ethylenediamine, diethylenediamine • {chloroform, methyl chloride, tetrachloromethane, dioxane, } 1, 2-dichloroethane
D	Decomposed	<ul style="list-style-type: none"> • ammonia water • other alkali

RECOMMENDABLE MATCHED CONNECTOR

Hirose Electric Co., Ltd. made DF3 series connector

HOUSING	DF3-3S-2C				
TERMINAL	TYPE No.	PRODUCT FORM	MATERIAL	AWG SIZE	INSULATION DIAMETER
	DF3-2428 SC	LOOSEN	PHOSPHOR BRONZE	AWG24~28	0.9~1.4mm
	DF3-2428 SCF	LINKED			

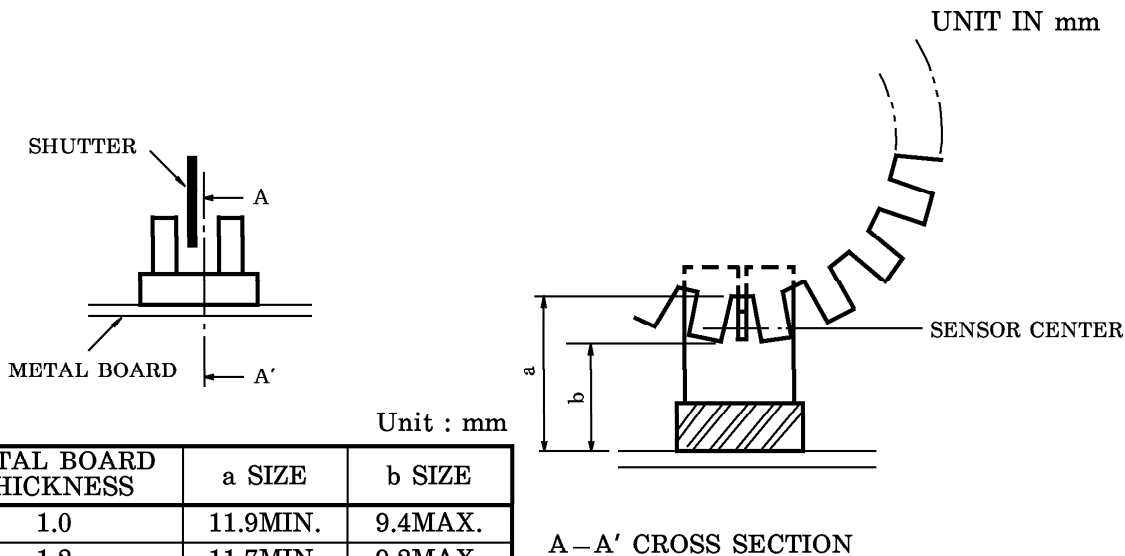
For details of the connectors, please refer to the connector maker.



POSITIONING OF SHUTTER AND DEVICE

To operate correctly, make sure that the shutter and the device are positioned as shown in the figure below.

The slit pitch of the shutter must be set wider than the slit width of the device.
 Determine the width taking the switching time into consideration.



RECOMMENDED MOUNTING HOLE

