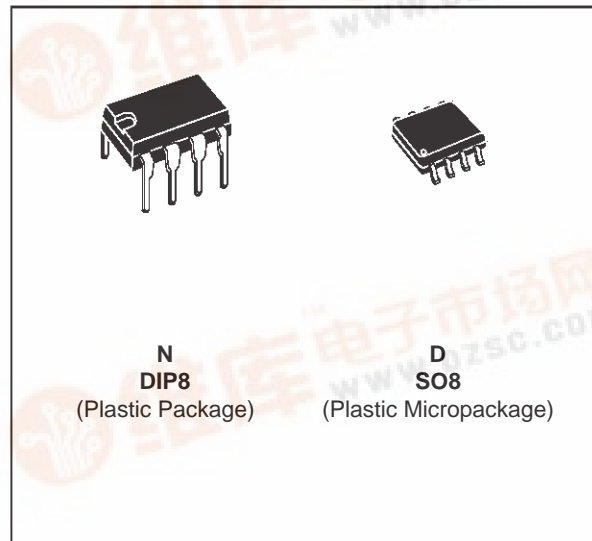




UA776

PROGRAMMABLE LOW POWER SINGLE OPERATIONAL AMPLIFIERS

- MICROPOWER OPERATION
- NO FREQUENCY COMPENSATION REQUIRED
- WIDE PROGRAMMING RANGE
- HIGH SLEW RATE
- SHORT-CIRCUIT PROTECTION
- PROGRAMMABLE SINGLE OP-AMP



ORDER CODES

| Part Number | Temperature Range | Package | |
|-------------|-------------------|---------|---|
| | | N | D |
| UA776C | 0°C, +70°C | • | • |
| UA776I | -40°C, +105°C | • | • |
| UA776M | -55°C, +125°C | • | • |

Example : UA776CN

DESCRIPTION

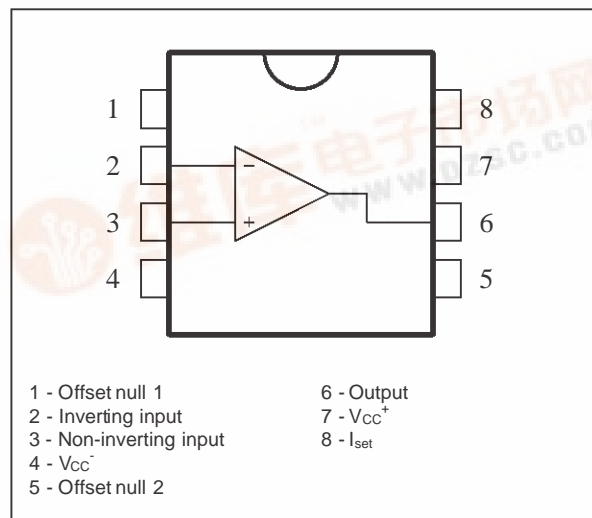
The UA776 programmable operational amplifier is characterized by low supply current and low equivalent input noise voltage over a wide range of operating supply voltages.

Coupled with programmable electrical characteristics, it is a versatile amplifier for use in high accuracy, low power consumption analog applications.

Input noise voltage and current, power consumption and input current can be optimized by a single resistor or current source that sets the chip quiescent current for nano-watt power consumption or for characteristics similar to the UA741.

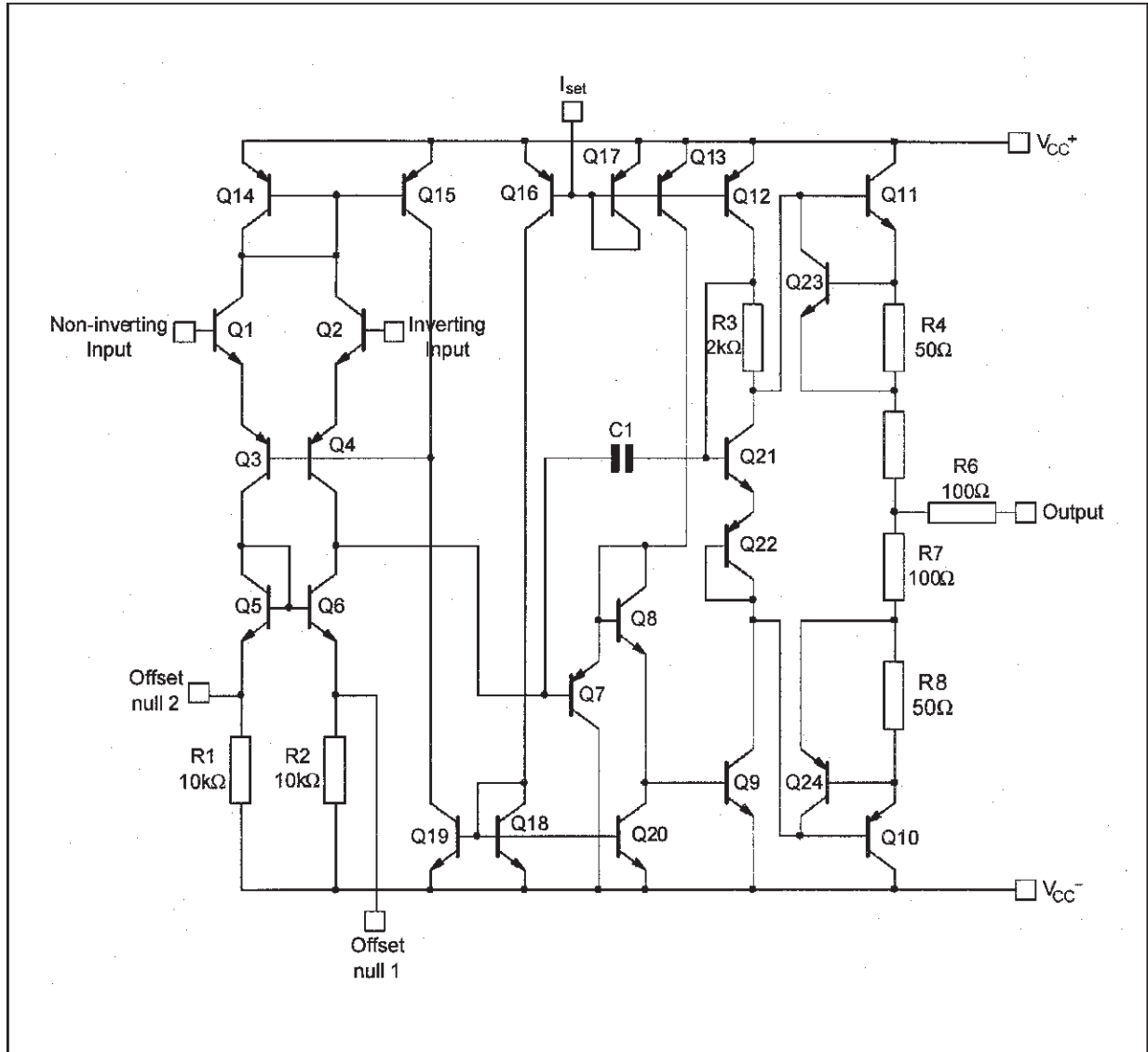
Internal frequency compensation, absence of latch up, high slew rate and short-circuit protection assure ease of use in long time integrators, active filters, and sample and hold circuits.

PIN CONNECTIONS (top view)



UA776

SCHEMATIC DIAGRAM



ABSOLUTE MAXIMUM RATINGS

| Symbol | Parameter | UA776M | UA776I | UA776C | Unit |
|------------|--------------------------------------|-------------|-------------|-------------|--------------------|
| V_{cc} | Supply Voltage | | ± 18 | | V |
| V_{id} | Differential Input Voltage | | ± 30 | | V |
| V_i | Input Voltage - (note 1) | | ± 15 | | V |
| P_{tot} | Power Dissipation | 500 | 310 | 310 | mW |
| | Output Short-circuit Duration | Infinite | | | |
| T_{oper} | Operating Free Air Temperature Range | -55 to +125 | -40 to +105 | 0 to +70 | $^{\circ}\text{C}$ |
| T_{stg} | Storage Temperature Range | -65 to +150 | -65 to +150 | -65 to +150 | $^{\circ}\text{C}$ |

Note : 1. For supply voltages less than $\pm 15\text{V}$, the absolute maximum input voltage is equal to the supply voltage.

ELECTRICAL CHARACTERISTICS $V_{CC} \pm 15V, T_{amb} = +25^{\circ}C$ (unless otherwise specified)

| Symbol | Parameter | $I_{set} = 1.5\mu A$ | | | $I_{set} = 15\mu A$ | | | Unit |
|---------------|--|----------------------|--------|-----------------|---------------------|----------|-----------------|------------------------|
| | | Min. | Typ. | Max. | Min. | Typ. | Max. | |
| V_{io} | Input Offset Voltage $T_{amb} = +25^{\circ}C$ $T_{min.} \leq T_{amb} \leq T_{max.}$ | | 2 | 5 6 | | 2 | 5 6 | mV |
| I_{io} | Input Offset Current $T_{amb} = +25^{\circ}C$ $T_{min.} \leq T_{amb} \leq T_{max.}$ | | 0.7 | 3 10 | | 2 | 15 40 | nA |
| I_{ib} | Input Bias Current $T_{amb} = +25^{\circ}C$ UA776M UA776I,C $T_{min.} \leq T_{amb} \leq T_{max.}$ | | 2 2 | 7.5 10 20 | | 15 15 | 50 50 100 | nA |
| A_{vd} | Large Signal Voltage Gain ($V_O \pm 10V$) $T_{amb} = +25^{\circ}C$ $R_L = 5k\Omega$ $R_L = 75k\Omega$ $T_{min.} \leq T_{amb} \leq T_{max.}$ $R_L = 75k\Omega$ $R_L = 5k\Omega$ | 200 100 | 400 | | 100 75 | 400 | | V/mV |
| SVR | Supply Voltage Rejection Ratio ($R_s \leq 10k\Omega$) $T_{amb} = +25^{\circ}C$ $T_{min.} \leq T_{amb} \leq T_{max.}$ | 77 77 | 92 | | 77 77 | 92 | | dB |
| I_{CC} | Supply Current, no load $T_{amb} = +25^{\circ}C$ $T_{min.} \leq T_{amb} \leq T_{max.}$ | | 20 | 25 30 | | 160 | 180 200 | μA |
| V_{icm} | Input Common Mode Voltage Range | ± 10 | | | ± 10 | | | V |
| CMR | Common-mode Rejection Ratio ($R_s \leq 10k\Omega$) $T_{amb} = +25^{\circ}C$ $T_{min.} \leq T_{amb} \leq T_{max.}$ | 70 70 | 90 | | 70 70 | 90 | | dB |
| I_{OS} | Output Short-circuit Current | 0.5 | 3 | 15 | 6 | 12 | 30 | mA |
| $\pm V_{OPP}$ | Output Voltage Swing $T_{amb} = +25^{\circ}C$ $R_L = 5k\Omega$ $R_L = 75k\Omega$ $T_{min.} \leq T_{amb} \leq T_{max.}$ $R_L = 75k\Omega$ | | | | | 10 13 | | V |
| V_{ior} | Offset Voltage Adjustment Range | | 9 | | | 18 | | mV |
| SR | Slew Rate ($V_i = \pm 10V, C_L = 100pF$, unity gain) $R_L = 5k\Omega$ $R_L = 75k\Omega$ | | | | 0.2 | 0.8 | | V/ms |
| t_r | Rise Time ($V_i = \pm 20mV, C_L = 100pF$, unity gain) $R_L = 5k\Omega$ $R_L = 75k\Omega$ | | | | | 0.35 | | ms |
| K_{OV} | Overshoot ($V_i = \pm 20mV, C_L = 100pF$, unity gain) $R_L = 5k\Omega$ $R_L = 75k\Omega$ | | 0 | | | 10 | | % |
| R_I | Input Resistance | | 50 | | | 5 | | $M\Omega$ |
| C_{id} | Differential Input Capacitance | | 2 | | | 2 | | pF |
| R_o | Output Resistance | | 5 | | | 1 | | k Ω |
| GBP | Gain Bandwidth Product ($C_L = 100pF, T_{amb} = 25^{\circ}C$) $f = 100kHz$ $f = 10kHz$ $R_L = 5k\Omega$ $R_L = 75k\Omega$ | 0.3 | 0.1 | | 0.4 | 0.7 | | MHz |
| THD | Total Harmonic Distortion ($f = 1kHz, A_v = 20dB$, $V_O = 2V_{PP}, C_L = 100pF, T_{amb} = 25^{\circ}C$) $R_L = 5k\Omega$ $R_L = 75k\Omega$ | | 0.8 | | | 0.025 | | % |
| en | Equivalent Input Noise Voltage ($f = 1kHz, R_s = 100\Omega$) | | 40 | | | 20 | | $\frac{nV}{\sqrt{Hz}}$ |

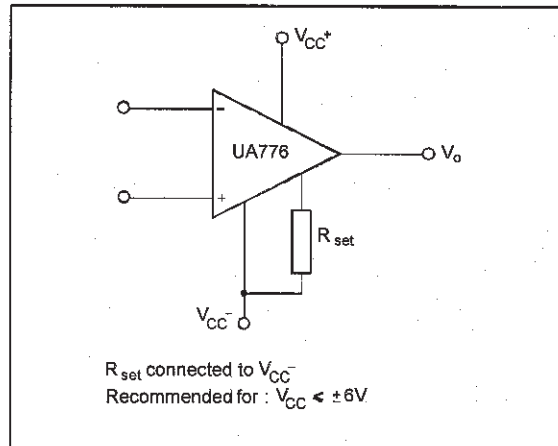
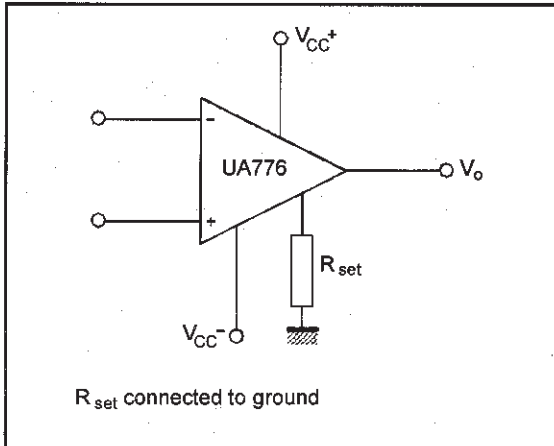
UA776

ELECTRICAL CHARACTERISTICS $V_{CC} \pm 3V$, $T_{amb} = +25^{\circ}C$ (unless otherwise specified)

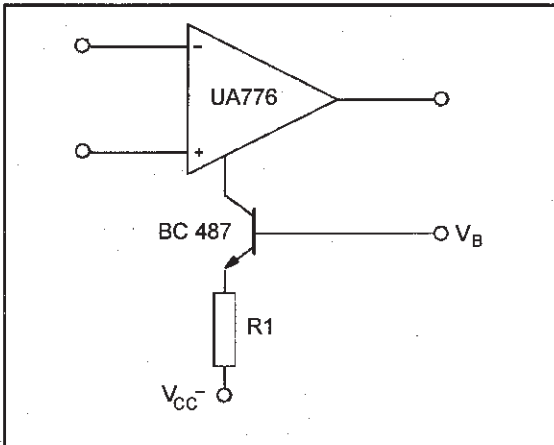
| Symbol | Parameter | $I_{set} = 1.5\mu A$ | | | $I_{set} = 15\mu A$ | | | Unit |
|---------------|---|----------------------|--------|---------------|----------------------|------------|-----------------|------------------------|
| | | Min. | Typ. | Max. | Min. | Typ. | Max. | |
| V_{io} | Input Offset Voltage $T_{amb} = +25^{\circ}C$ $T_{min.} \leq T_{amb} \leq T_{max.}$ | | 2 | 5 6 | | 2 | 5 6 | mV |
| I_{io} | Input Offset Current $T_{amb} = +25^{\circ}C$ $T_{min.} \leq T_{amb} \leq T_{max.}$ | | 0.7 | 3 10 | | 2 | 15 40 | nA |
| I_{ib} | Input Bias Current $T_{amb} = +25^{\circ}C$ UA776M UA776I,C $T_{min.} \leq T_{amb} \leq T_{max.}$ | | 2 2 | 7 10 20 | | 15 15 | 50 50 100 | nA |
| A_{vd} | Large Signal Voltage Gain ($V_O \pm 10V$) $T_{amb} = +25^{\circ}C$ $R_L = 5k\Omega$ $T_{min.} \leq T_{amb} \leq T_{max.}$ $R_L = 75k\Omega$ $R_L = 5k\Omega$ | 50 25 | 200 | | 50 25 | 200 | | V/mV |
| SVR | Supply Voltage Rejection Ratio ($R_S \leq 10k\Omega$) $T_{amb} = +25^{\circ}C$ $T_{min.} \leq T_{amb} \leq T_{max.}$ | 77 77 | 92 | | 77 77 | 92 | | dB |
| I_{CC} | Supply Current, no load $T_{amb} = +25^{\circ}C$ $T_{min.} \leq T_{amb} \leq T_{max.}$ | | 13 | 20 25 | | 130 | 160 180 | μA |
| V_{icm} | Input Common Mode Voltage Range | ± 1 | | | ± 1 | | | V |
| CMR | Common-mode Rejection Ratio ($R_S \leq 10k\Omega$) $T_{amb} = +25^{\circ}C$ $T_{min.} \leq T_{amb} \leq T_{max.}$ | 70 70 | 90 | | 70 70 | 90 | | dB |
| I_{OS} | Output Short-circuit Current | 0.5 | 3 | 15 | 2 | 5 | 20 | mA |
| $\pm V_{OPP}$ | Output Voltage Swing $T_{amb} = +25^{\circ}C$ $R_L = 5k\Omega$ $T_{min.} \leq T_{amb} \leq T_{max.}$ $R_L = 75k\Omega$ $R_L = 5k\Omega$ | 2 2 | 2.4 | | 2 1.9 2 1.9 | 2.4 2.1 | | V |
| V_{Ior} | Offset Voltage Adjustment Range | | 9 | | | 18 | | mV |
| SR | Slew Rate ($V_i = \pm 10V$, $C_L = 100pF$, unity gain) $R_L = 5k\Omega$ $R_L = 75k\Omega$ | | 0.03 | | | 0.35 | | V/ms |
| t_r | Rise Time ($V_i = \pm 20mV$, $C_L = 100pF$, unity gain) $R_L = 5k\Omega$ $R_L = 75k\Omega$ | | 3 | | | 0.6 | | μs |
| K_{OV} | Overshoot ($V_i = \pm 20mV$, $C_L = 100pF$, unity gain) $R_L = 5k\Omega$ $R_L = 75k\Omega$ | | 0 | | | 5 | | % |
| R_i | Input Resistance | | 50 | | | 5 | | $M\Omega$ |
| C_{id} | Differential Input Capacitance | | 2 | | | 2 | | pF |
| R_o | Output Resistance | | 5 | | | 1 | | k Ω |
| GBP | Gain Bandwidth Product ($C_L = 100pF$, $T_{amb} = 25^{\circ}C$) $f = 100kHz$ $f = 10kHz$ $R_L = 5k\Omega$ $R_L = 75k\Omega$ | | 0.075 | | | 0.5 | | MHz |
| THD | Total Harmonic Distortion ($f = 1kHz$, $A_v = 20dB$, $V_O = 2V_{PP}$, $C_L = 100pF$, $T_{amb} = 25^{\circ}C$) $R_L = 5k\Omega$ $R_L = 75k\Omega$ | | 1 | | | 0.03 | | % |
| e_n | Equivalent Input Noise Voltage ($f = 1kHz$, $R_s = 100\Omega$) | | 20 | | | 20 | | $\frac{nV}{\sqrt{Hz}}$ |

BIASING CIRCUITS

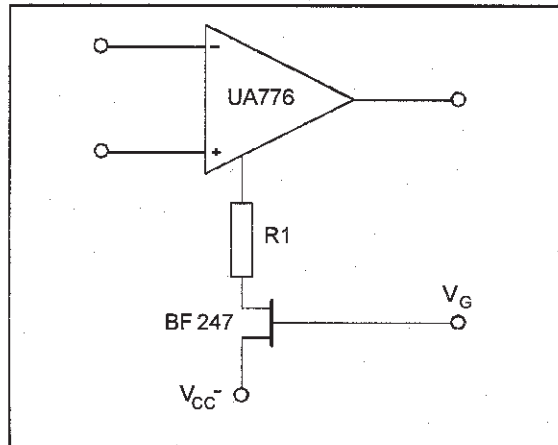
RESISTOR BIASING



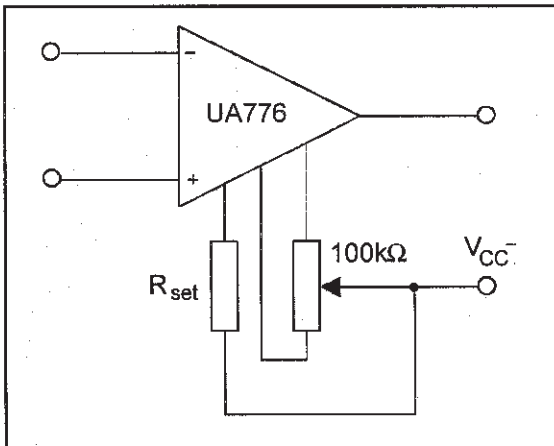
TRANSISTOR CURRENT SOURCE BIASING



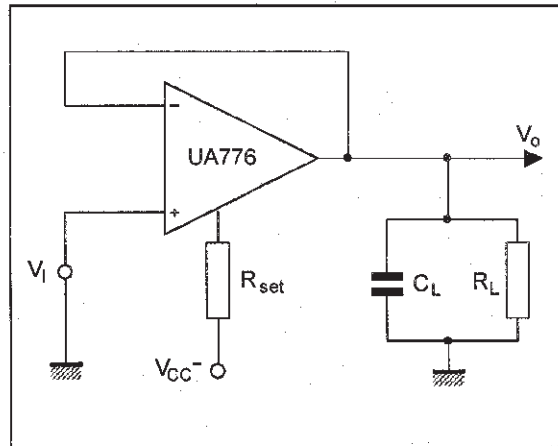
FET CURRENT SOURCE BIASING



OFFSET VOLTAGE NULL CIRCUIT

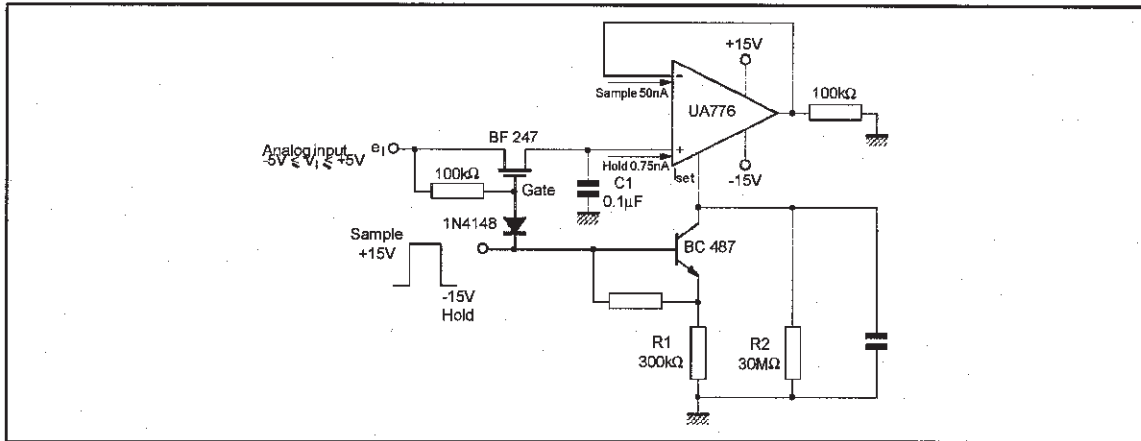


TRANSIENT RESPONSE TIME TEST CIRCUIT



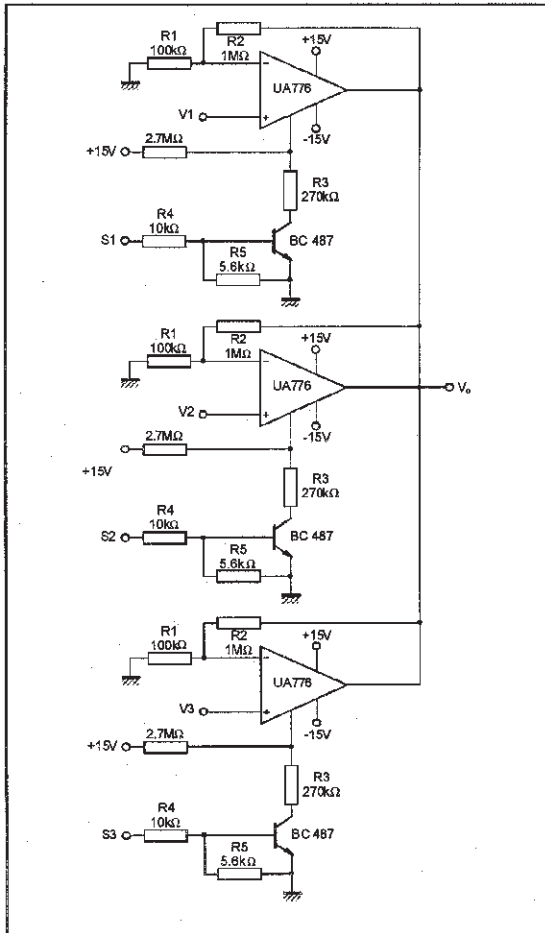
TYPICAL APPLICATIONS

HIGH ACCURACY SAMPLE AND HOLD



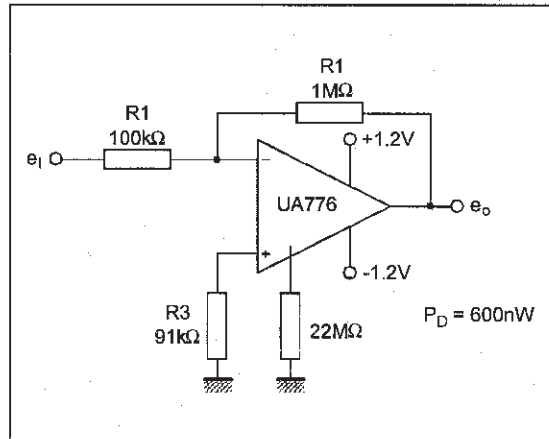
776-10.EPS

MULTIPLEXING AND SIGNAL CONDITIONING WITHOUT FETs



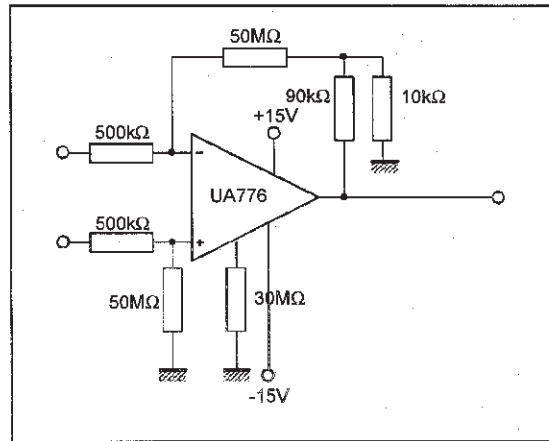
776-11.EPS

NANO-WATT AMPLIFIER



776-12.EPS

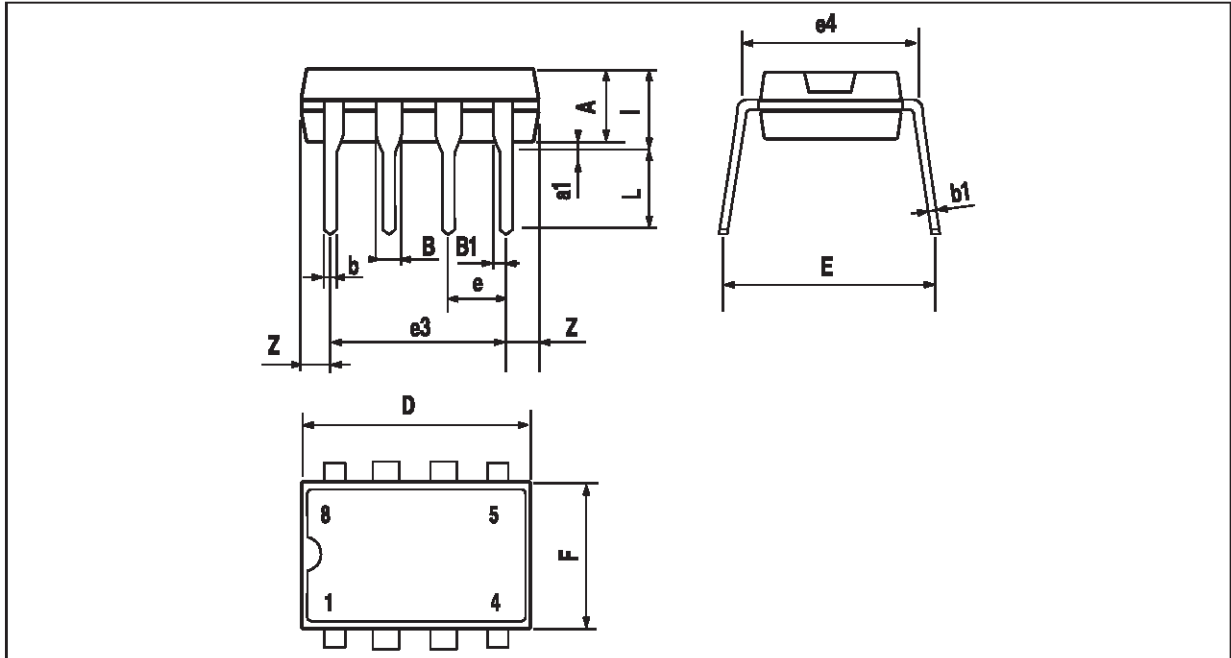
HIGH INPUT IMPEDANCE AMPLIFIER



776-13.EPS

PACKAGE MECHANICAL DATA

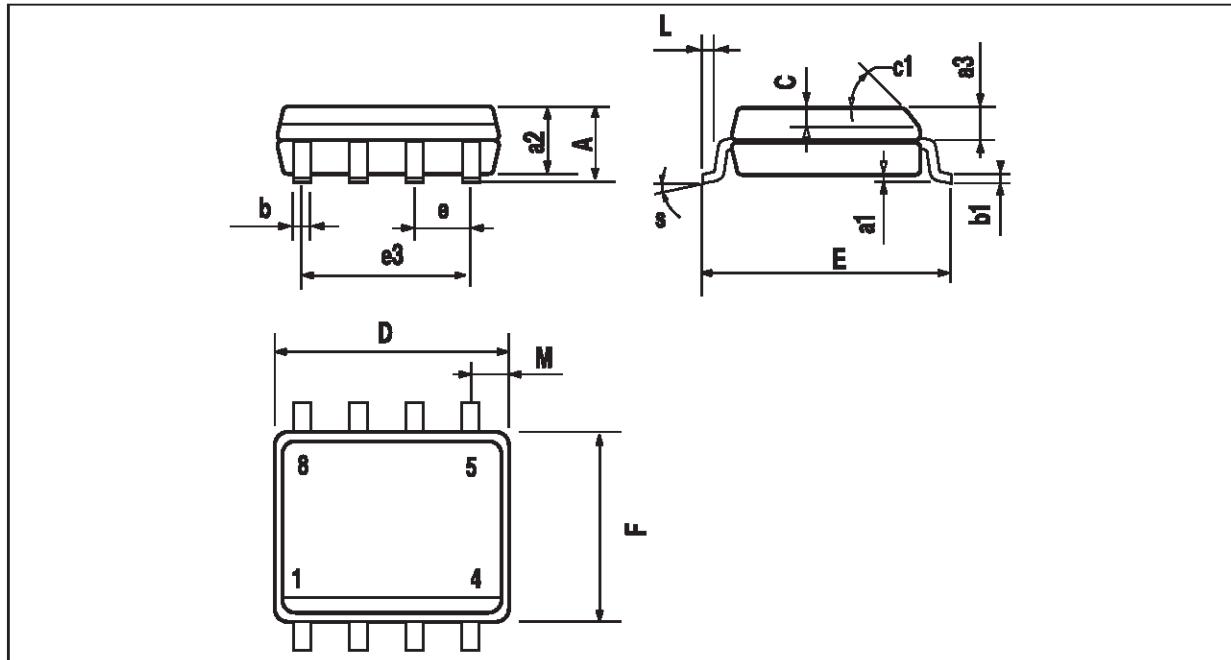
8 PINS - PLASTIC DIP



| Dim. | Millimeters | | | Inches | | |
|------|-------------|------|-------|--------|-------|-------|
| | Min. | Typ. | Max. | Min. | Typ. | Max. |
| A | | 3.32 | | | 0.131 | |
| a1 | 0.51 | | | 0.020 | | |
| B | 1.15 | | 1.65 | 0.045 | | 0.065 |
| b | 0.356 | | 0.55 | 0.014 | | 0.022 |
| b1 | 0.204 | | 0.304 | 0.008 | | 0.012 |
| D | | | 10.92 | | | 0.430 |
| E | 7.95 | | 9.75 | 0.313 | | 0.384 |
| e | | 2.54 | | | 0.100 | |
| e3 | | 7.62 | | | 0.300 | |
| e4 | | 7.62 | | | 0.300 | |
| F | | | 6.6 | | | 0.260 |
| i | | | 5.08 | | | 0.200 |
| L | 3.18 | | 3.81 | 0.125 | | 0.150 |
| Z | | | 1.52 | | | 0.060 |

1

PACKAGE MECHANICAL DATA
8 PINS - PLASTIC MICROPACKAGE (SO)



| Dim. | Millimeters | | | Inches | | |
|------|-------------|------|------|--------|-------|-------|
| | Min. | Typ. | Max. | Min. | Typ. | Max. |
| A | | | 1.75 | | | 0.069 |
| a1 | 0.1 | | 0.25 | 0.004 | | 0.010 |
| a2 | | | 1.65 | | | 0.065 |
| a3 | 0.65 | | 0.85 | 0.026 | | 0.033 |
| b | 0.35 | | 0.48 | 0.014 | | 0.019 |
| b1 | 0.19 | | 0.25 | 0.007 | | 0.010 |
| C | 0.25 | | 0.5 | 0.010 | | 0.020 |
| c1 | 45° (typ.) | | | | | |
| D | 4.8 | | 5.0 | 0.189 | | 0.197 |
| E | 5.8 | | 6.2 | 0.228 | | 0.244 |
| e | | 1.27 | | | 0.050 | |
| e3 | | 3.81 | | | 0.150 | |
| F | 3.8 | | 4.0 | 0.150 | | 0.157 |
| L | 0.4 | | 1.27 | 0.016 | | 0.050 |
| M | | | 0.6 | | | 0.024 |
| S | 8° (max.) | | | | | |

1

Information furnished is believed to be accurate and reliable. However, SGS-THOMSON Microelectronics assumes no responsibility for the consequences of use of such information nor for any infringement of patents or other rights of third parties which may result from its use. No license is granted by implication or otherwise under any patent or patent rights of SGS-THOMSON Microelectronics. Specifications mentioned in this publication are subject to change without notice. This publication supersedes and replaces all information previously supplied. SGS-THOMSON Microelectronics products are not authorized for use as critical components in life support devices or systems without express written approval of SGS-THOMSON Microelectronics.

© 1997 SGS-THOMSON Microelectronics – Printed in Italy – All Rights Reserved

SGS-THOMSON Microelectronics GROUP OF COMPANIES
Australia - Brazil - Canada - China - France - Germany - Italy - Japan - Korea - Malaysia - Malta - Morocco
The Netherlands - Singapore - Spain - Sweden - Switzerland - Taiwan - Thailand - United Kingdom - U.S.A.