

HD74UH4066

Analog Switch

HITACHI

ADE-205-022A (Z)

2nd. Edition

Aug. 1993

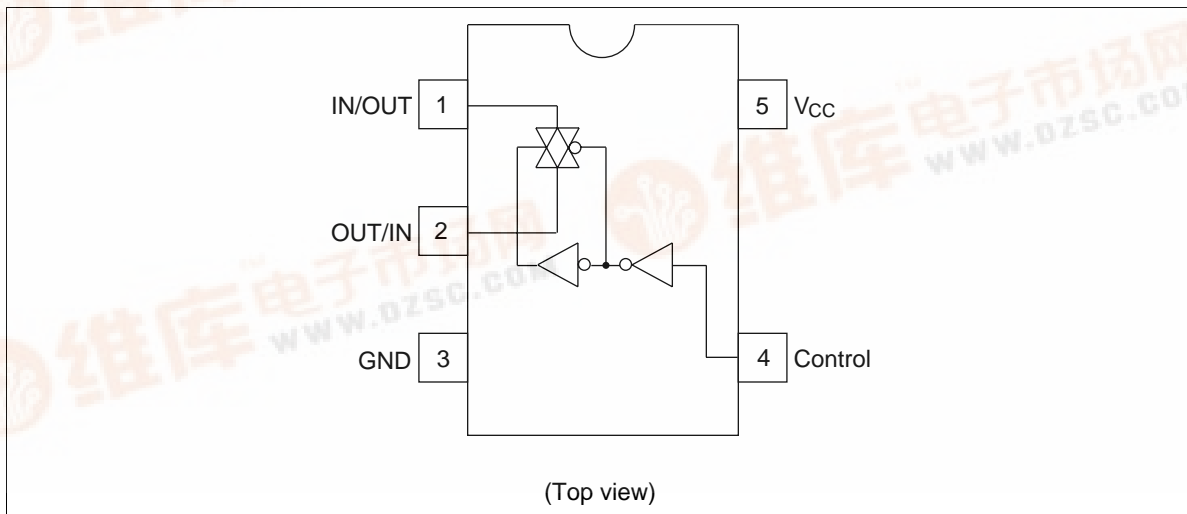
Description

The HD74UH4066 is high speed CMOS analog switch using silicon gate CMOS process. With CMOS low power dissipation, it provides high speed. The device has low ON resistance for good transfer characteristics and can take wide range of input voltage.

Features

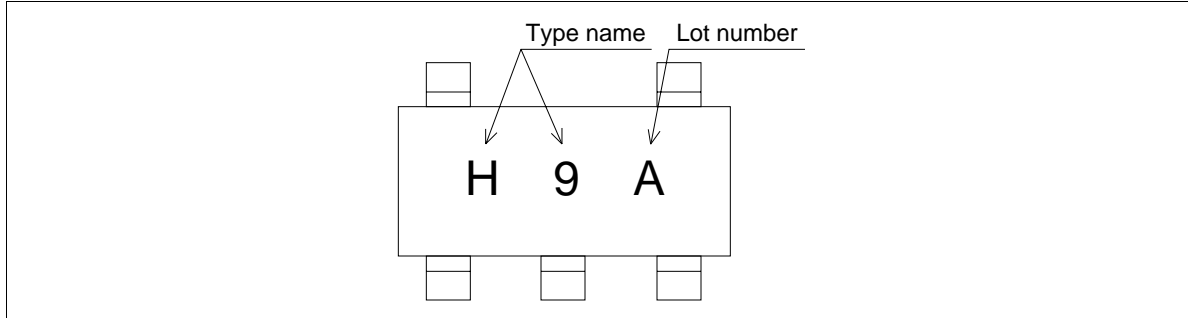
- Encapsulated in very small 5pins package of $2.9 \times 1.6 \times 1.1$ mm, the efficiency to mount on substrate is significantly improved.
 - The basic gate function is lined up as hitachi uni logic series.
 - Supplied on embos taping for high speed automatic mounting.
 - Electrical characteristics equivalent to the HD74HC4066
- Supply voltage range: 2 to 6 V
Operating temperature range: -40 to $+85^{\circ}\text{C}$
- $|I_{OH}| = I_{OL} = 2$ mA (min)

Pin Arrangement



HD74UH4066

Article Indication



Absolute Maximum Ratings

Item	Symbol	Ratings	Unit
Supply voltage	V_{CC}	-0.5 to +7.0	V
Input voltage	V_{IN}	-0.5 to $V_{CC} + 0.5$	V
Output voltage	V_{OUT}	-0.5 to $V_{CC} + 0.5$	V
Input diode current	I_{IK}	± 20	mA
Output diode current	I_{OK}	± 20	mA
Output current	I_{OUT}	± 25	mA
V_{CC} /GND current	I_{CC}, I_{GND}	± 25	mA
Power dissipation	P_T	200	mW
Storage temperature	T_{stg}	-65 to +150	°C

Recommended Operating Conditions

Item	Symbol	Ratings	Unit
Supply voltage	V_{CC}	2 to 6	V
Input voltage	V_{IN}	0 to V_{CC}	V
Output voltage	V_{OUT}	0 to V_{CC}	V
Operating temperature	T_{opr}	-40 to +85	°C
Input rise/fall time	t_r, t_f	0 to 1000 ($V_{CC} = 2.0$ V)	ns
		0 to 500 ($V_{CC} = 4.5$ V)	
		0 to 400 ($V_{CC} = 6.0$ V)	

Electrical Characteristics

Item	Symbol	Ta = 25°C			Ta = -40 to 85°C		Unit	Test Conditions	
		Min	Typ	Max	Min	Max		V _{CC}	
Input voltage	V _{IH}	1.5	—	—	1.5	—	V	2.0	
		3.15	—	—	3.15	—		4.5	
		4.2	—	—	4.2	—		6.0	
	V _{IL}	—	—	0.5	—	0.5	V	2.0	
		—	—	1.35	—	1.35		4.5	
		—	—	1.8	—	1.8		6.0	
On resistance	R _{ON}	—	2000	5000	—	6250	Ω	2.0	V _C = V _{IH}
		—	100	200	—	250		4.5	V _{IN} = 0 to V _{CC}
		—	60	170	—	210		6.0	I _{IN/OUT} = 1 mA
Leak current	I _S (off)	—	—	±0.1	—	±1.0	μA	6.0	V _C = V _{IL} V _{IN} = V _{CC} , V _{OUT} = GND or V _{IN} = GND, V _{OUT} = V _{CC}
	I _S (on)	—	—	±0.1	—	±1.0		6.0	V _C = V _{IH} V _{IN} = V _{CC} or GND
Input current	I _{IN}	—	—	±0.1	—	±1.0	μA	6.0	V _{IN} = V _{CC} or GND
Operating current	I _{CC}	—	—	1.0	—	10.0	μA	6.0	V _{IN} = V _{CC} or GND

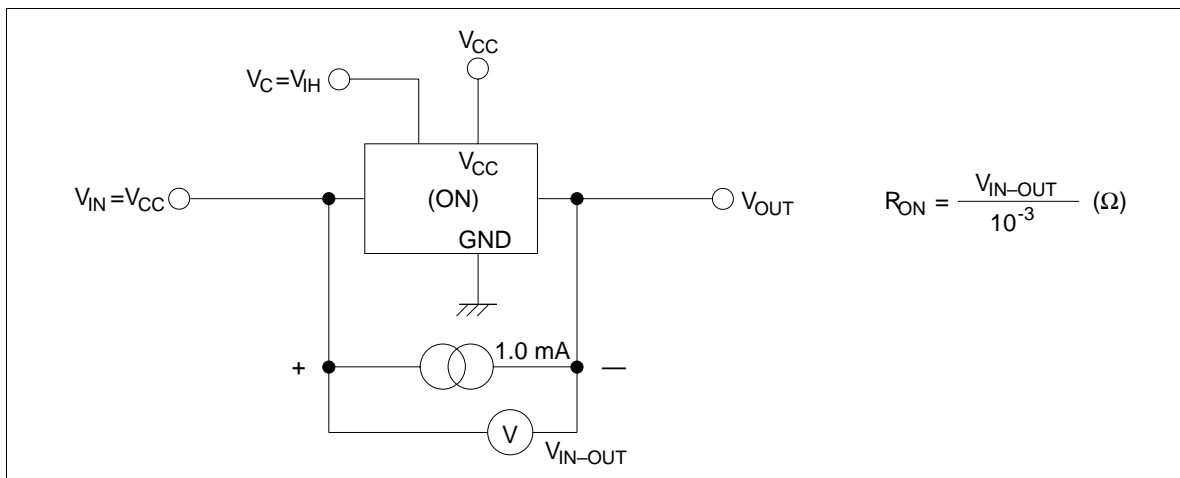
HD74UH4066

Switching Characteristics

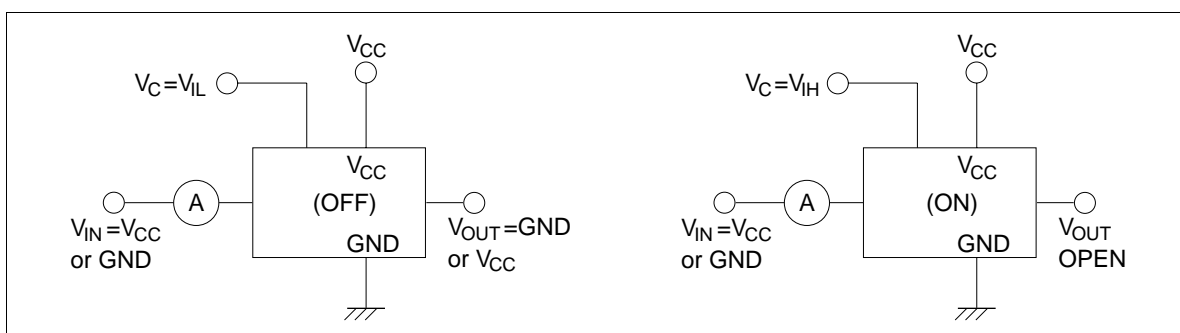
Item	Symbol	Ta = 25°C			Ta = -40 to 85°C		Unit	Test Conditions	
		Min	Typ	Max	Min	Max		V _{CC}	
Propagation delay time	t _{PLH}	—	—	50	—	65	ns	2.0	R _L = 10 KΩ
	t _{PHL}	—	4	10	—	13		4.5	
		—	—	9	—	11		6.0	
Output enable time	t _{PZL}	—	—	115	—	145	ns	2.0	R _L = 1 KΩ
	t _{PZH}	—	10	23	—	29		4.5	
		—	—	20	—	25		6.0	
Output disable time	t _{LZ}	—	—	115	—	145	ns	2.0	R _L = 1 KΩ
	t _{HZ}	—	14	23	—	29		4.5	
		—	—	20	—	25		6.0	
Maximum control frequency	t _{max}	—	20	—	—	—	MHz	2.0	
		—	30	—	—	—		4.5	
		—	30	—	—	—		6.0	
Control input capacitance	C _{IN}	—	5	10	—	10	pF		
Switch I/O capacitance	C _{IN/OUT}	—	6	—	—	—	pF		
Feed through capacitance	C _{IN-OUT}	—	0.5	—	—	—	pF		
Power dissipation capacitance	C _{PD}	—	13	—	—	—	pF		

Test Circuit

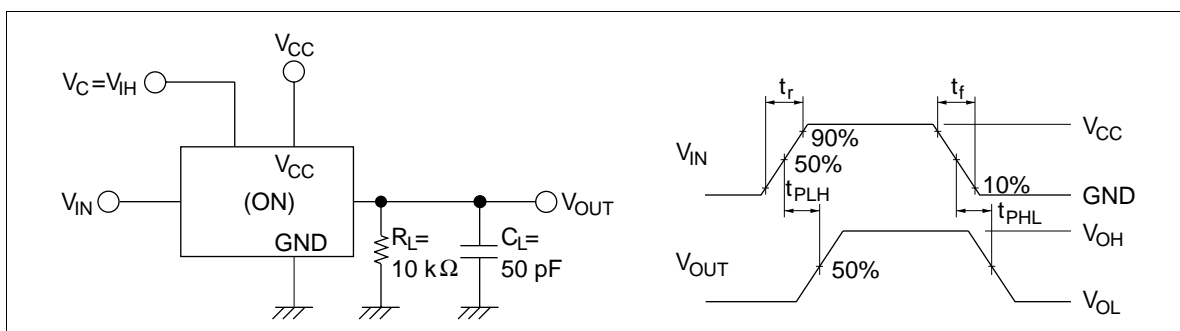
RON



IS (OFF), IS (ON)

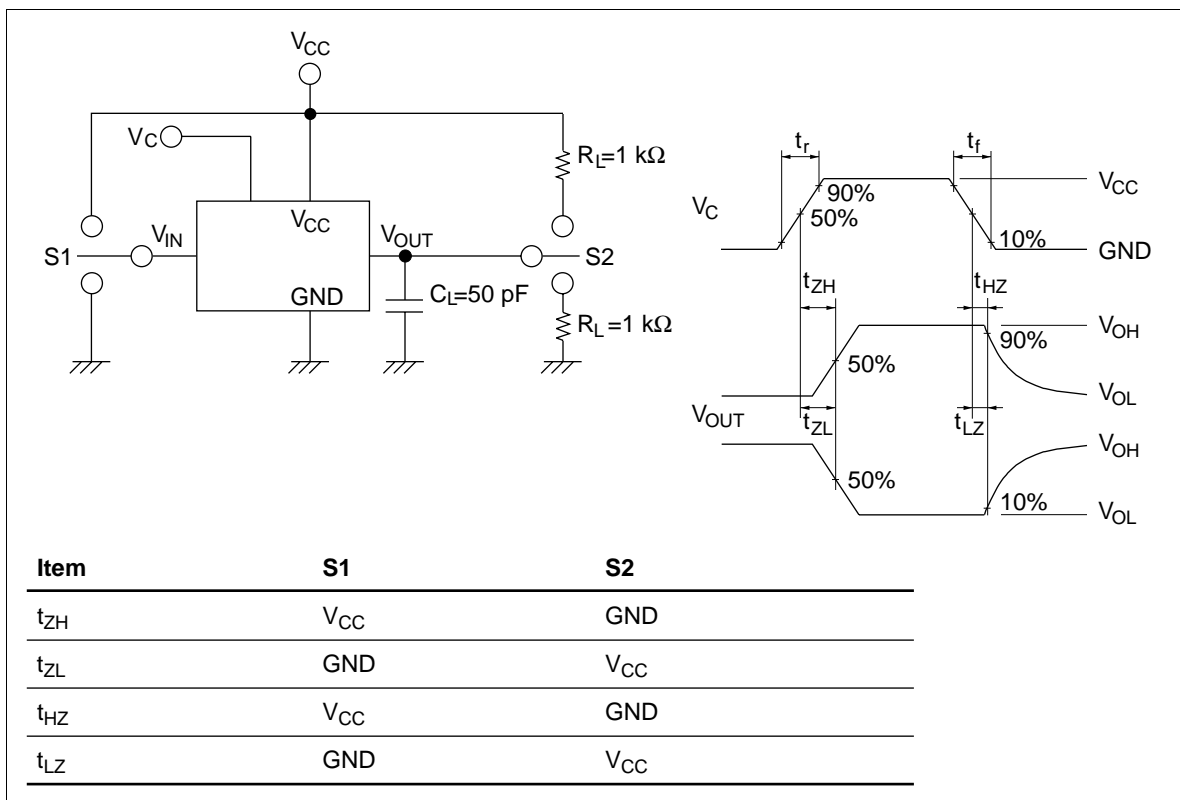


tPLH, tPHL

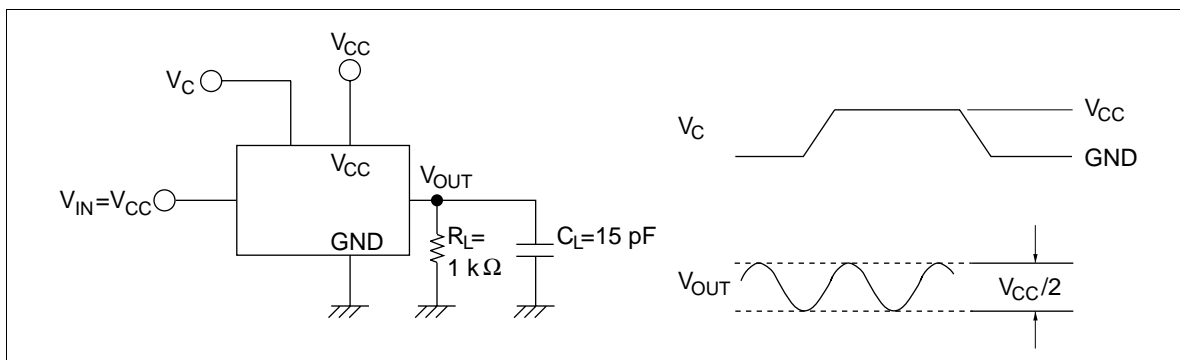


HD74UH4066

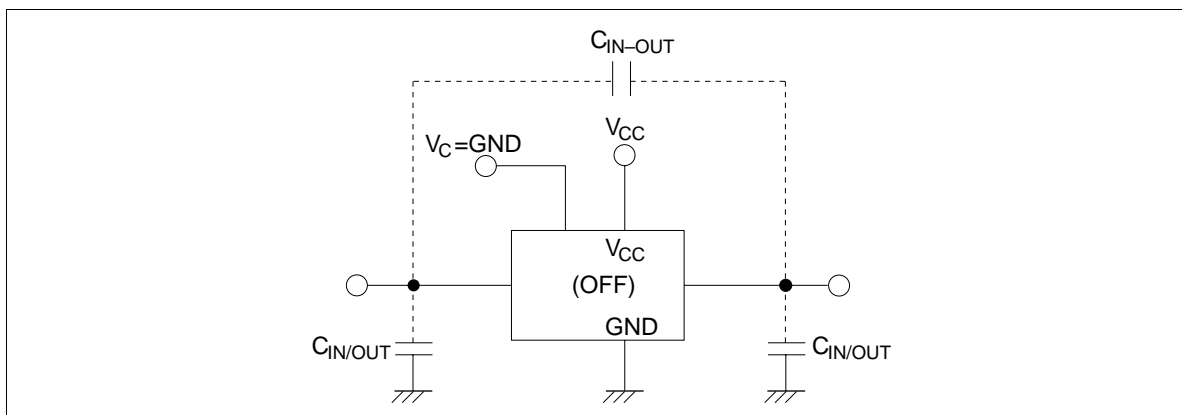
$t_{ZH}, t_{ZL} / t_{HZ}, t_{LZ}$



Maximum control frequency

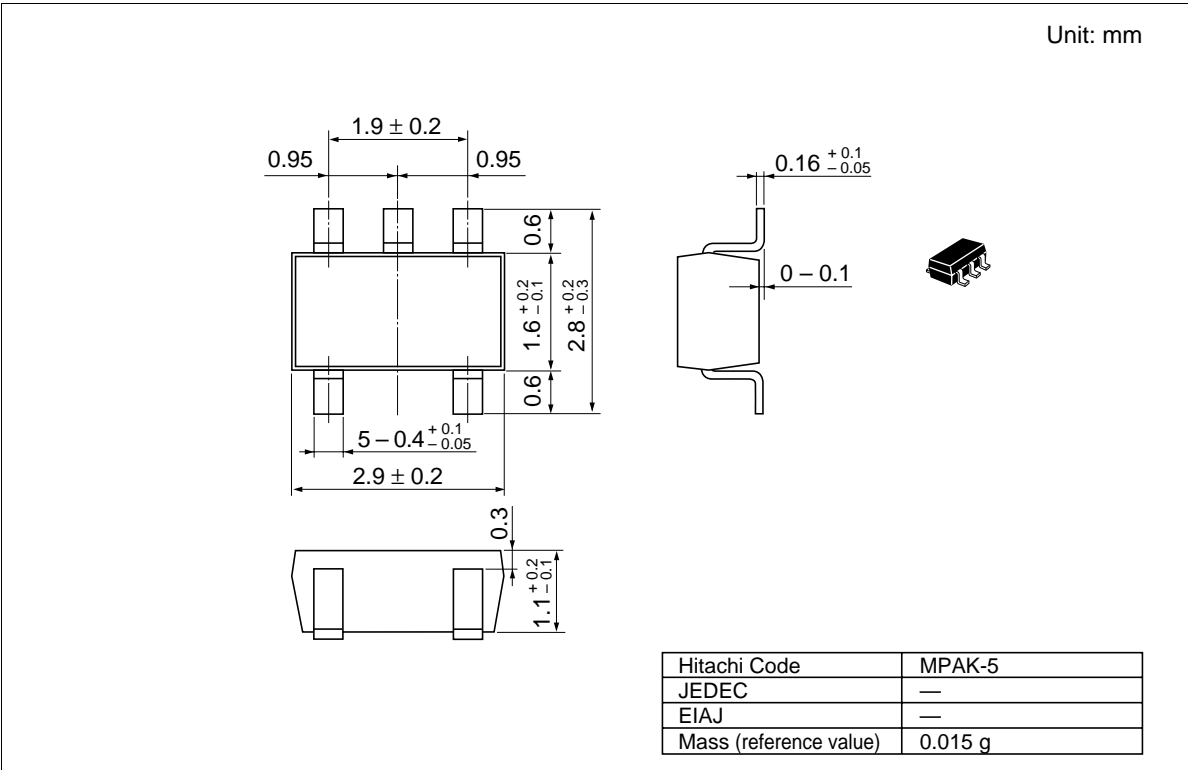


$C_{IN/OUT}$, C_{IN-OUT}



HD74UH4066

Package Dimensions



Cautions

1. Hitachi neither warrants nor grants licenses of any rights of Hitachi's or any third party's patent, copyright, trademark, or other intellectual property rights for information contained in this document. Hitachi bears no responsibility for problems that may arise with third party's rights, including intellectual property rights, in connection with use of the information contained in this document.
2. Products and product specifications may be subject to change without notice. Confirm that you have received the latest product standards or specifications before final design, purchase or use.
3. Hitachi makes every attempt to ensure that its products are of high quality and reliability. However, contact Hitachi's sales office before using the product in an application that demands especially high quality and reliability or where its failure or malfunction may directly threaten human life or cause risk of bodily injury, such as aerospace, aeronautics, nuclear power, combustion control, transportation, traffic, safety equipment or medical equipment for life support.
4. Design your application so that the product is used within the ranges guaranteed by Hitachi particularly for maximum rating, operating supply voltage range, heat radiation characteristics, installation conditions and other characteristics. Hitachi bears no responsibility for failure or damage when used beyond the guaranteed ranges. Even within the guaranteed ranges, consider normally foreseeable failure rates or failure modes in semiconductor devices and employ systemic measures such as fail-safes, so that the equipment incorporating Hitachi product does not cause bodily injury, fire or other consequential damage due to operation of the Hitachi product.
5. This product is not designed to be radiation resistant.
6. No one is permitted to reproduce or duplicate, in any form, the whole or part of this document without written approval from Hitachi.
7. Contact Hitachi's sales office for any questions regarding this document or Hitachi semiconductor products.

HITACHI

Hitachi, Ltd.

Semiconductor & Integrated Circuits.

Nippon Bldg., 2-6-2, Ohte-machi, Chiyoda-ku, Tokyo 100-0004, Japan

Tel: Tokyo (03) 3270-2111 Fax: (03) 3270-5109

URL	NorthAmerica	: http://semiconductor.hitachi.com/
	Europe	: http://www.hitachi-eu.com/hel/ecg
	Asia	: http://sicapac.hitachi-asia.com
	Japan	: http://www.hitachi.co.jp/Sicd/indx.htm

For further information write to:

Hitachi Semiconductor
(America) Inc.
179 East Tasman Drive,
San Jose, CA 95134
Tel: <1> (408) 433-1990
Fax: <1> (408) 433-0223

Hitachi Europe GmbH
Electronic Components Group
Dornacher StraÙe 3
D-85622 Feldkirchen, Munich
Germany
Tel: <49> (89) 9 9180-0
Fax: <49> (89) 9 29 30 00

Hitachi Europe Ltd.
Electronic Components Group.
Whitebrook Park
Lower Cookham Road
Maidenhead
Berkshire SL6 8YA, United Kingdom
Tel: <44> (1628) 585000
Fax: <44> (1628) 585160

Hitachi Asia Ltd.
Hitachi Tower
16 Collyer Quay #20-00,
Singapore 049318
Tel : <65>-538-6533/538-8577
Fax : <65>-538-6933/538-3877
URL : <http://www.hitachi.com.sg>

Hitachi Asia Ltd.
(Taipei Branch Office)
4/F, No. 167, Tun Hwa North Road,
Hung-Kuo Building,
Taipei (105), Taiwan
Tel : <886>-(2)-2718-3666
Fax : <886>-(2)-2718-8180
Telex : 23222 HAS-TP
URL : <http://www.hitachi.com.tw>

Hitachi Asia (Hong Kong) Ltd.
Group III (Electronic Components)
7/F., North Tower,
World Finance Centre,
Harbour City, Canton Road
Tsim Sha Tsui, Kowloon,
Hong Kong
Tel : <852>-(2)-735-9218
Fax : <852>-(2)-730-0281
URL : <http://www.hitachi.com.hk>

Copyright © Hitachi, Ltd., 2000. All rights reserved. Printed in Japan.
Colophon 2.0