

Coaxial

# Low Pass Filter

DC to 1100 MHz (40 dB Isolation up to 20 GHz)

**NEW!**

**VLFX-1100**

## Maximum Ratings

Operating Temperature -55°C to 100°C

Storage Temperature -55°C to 100°C

RF Power Input\* 10W max. at 25°C

\*Passband rating, derate linearly to 3.5W at 100°C ambient.

## Features

- very good isolation, 40 dB up to 20 GHz
- 21 sections
- temperature stable LTCC internal structure
- patent pending
- re-entry frequency > 20 GHz
- rugged stainless steel unibody

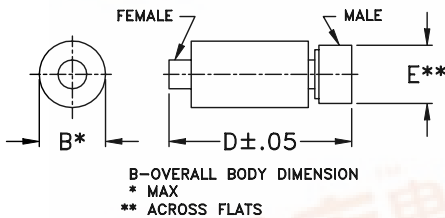
## Applications

- harmonic rejection
- transmitters/receivers
- lab use
- test instrumentation



CASE STYLE: FF1118  
PRICE: \$ 39.95 ea. QTY (1-9)

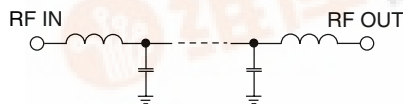
## Outline Drawing



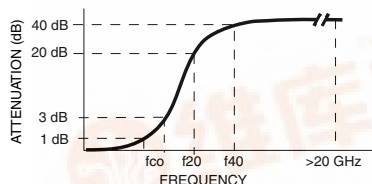
## Outline Dimensions (inch)

B	D	E	wt.
.39	2.67	.312	grams
9.91	67.82	7.92	17.0

## Functional Schematic



## Typical Frequency Response

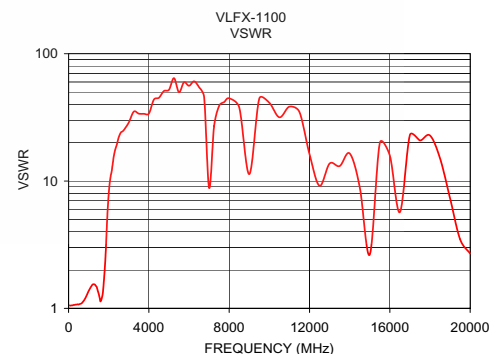
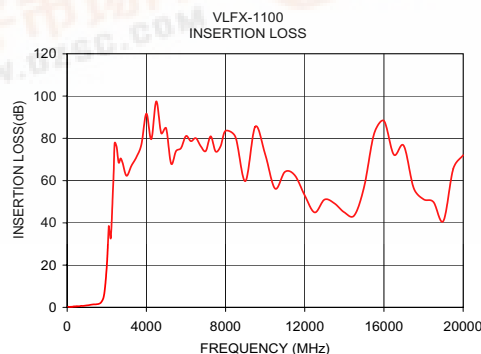


## Low Pass Filter Electrical Specifications @ 25°C

MODEL NO.	PASSBAND (MHz) (Loss < 1.2dB) Max.	fco, MHz Nom (Loss 3 dB) Typ	STOPBAND (MHz) (Loss, dB)		VSWR (:1)		NO. OF SECTIONS
			f20 Min.	f40 Typ.	Stopband Typ.	Passband Typ.	
VLFX-1100	DC-1100	1750	2070	2300-20000	10	1.4	21

## Typical Performance Data @ 25°C

Frequency (MHz)	Insertion Loss (dB)	VSWR (:1)
50	0.31	1.06
350	0.40	1.07
700	0.69	1.12
1100	1.03	1.46
1200	1.24	1.54
1400	1.42	1.47
1600	1.68	1.13
1800	3.65	2.01
1900	8.30	4.14
2000	19.32	8.02
2100	38.37	11.00
3000	62.27	28.86
4000	91.73	33.84
5000	84.76	52.10
7500	73.80	39.07
10000	72.42	41.17
12500	44.93	9.18
15000	57.16	2.65
17500	56.53	20.82
20000	72.04	2.69



**Mini-Circuits®**

INTERNET <http://www.minicircuits.com>

P.O. Box 350166, Brooklyn, New York 11235-0003 (718) 934-4500 Fax (718) 332-4661

REV. OR  
M96318  
VLFX-1100  
FDI-0399