

Coaxial Directional Coupler

NEW!
ZNDC-20-2G

50Ω 20dB 800 to 2000 MHz

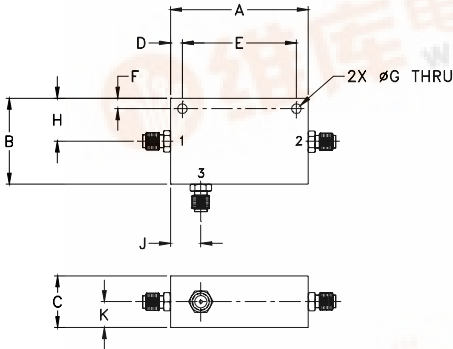
Maximum Ratings

Operating Temperature	-55°C to 100°C
Storage Temperature	-55°C to 100°C
Power Input	3W Max.

Pin Connections

INPUT	1
OUTPUT	2
COUPLED	3

Outline Drawing



Outline Dimensions (inch/mm)

A	B	C	D	E	F	G	H
2.00	1.25	.75	.17	1.656	.15	.140	.63
50.80	31.75	19.05	4.32	42.06	3.81	3.56	16.00

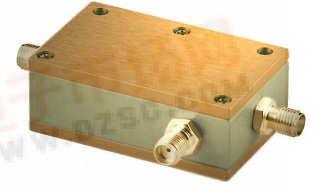
J	K	wt.
.44	.38	grams
11.18	9.65	57

Features

- excellent insertion loss, 0.5 dB typ.
- excellent VSWR, 1.15:1 typ.
- very flat coupling, ±0.2 dB typ.

Applications

- cellular
- PCS
- ISM



CASE STYLE: FM587
PRICE: \$49.95 ea. QTY (1-9)

Directional Coupler Electrical Specifications

FREQ. RANGE (MHz)	COUPLING (dB)		MAINLINE LOSS (dB)		DIRECTIVITY (dB)		VSWR (-:1)	POWER INPUT (W)
	Nom.	Max. Flatness	Typ.	Max.	Typ.	Min.	Typ.	Max.
800-2000								
800-1000	20.0±0.5	±0.3	0.35	0.6	25	17	1.15	3
1000-1700	19.8±0.5	±0.4	0.5	0.9	25	18	1.15	3
1700-2000	19.8±0.5	±0.5	0.6	1.1	20	14	1.15	3

Typical Performance Data

Frequency (MHz)	Insertion Loss (dB) In-Out	Coupling (dB) In-Cpl	Directivity (dB)	Return Loss (dB)		
				In	Out	Cpl
800.00	0.33	20.04	24.78	24.68	24.07	20.57
900.00	0.35	19.95	26.10	26.07	25.28	20.84
1000.00	0.37	19.87	27.15	27.09	25.57	21.21
1100.00	0.39	19.81	27.62	26.98	25.04	21.54
1300.00	0.46	19.73	28.22	24.33	22.51	22.23
1500.00	0.53	19.74	28.44	21.90	20.25	23.28
1700.00	0.60	19.82	26.05	20.70	18.83	24.03
1800.00	0.64	19.90	25.11	20.34	18.32	24.40
1900.00	0.69	19.99	24.05	20.25	17.90	24.43
2000.00	0.73	20.11	21.74	20.57	17.76	24.12

