

# Switch

## ZSWA-4-30DR

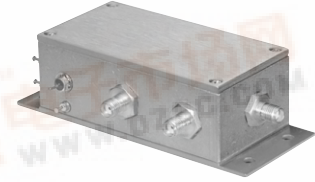
High Isolation, SP4T, 50Ω DC to 3 GHz

### Features

- high isolation, 37 dB typ @ 2 GHz
- integral TTL driver

### Applications

- transmitter/ receiver isolation
- automated switching networks
- cellular
- PCN



CASE STYLE: CV665  
CONNECTOR: SMA  
PRICE: \$119.95 ea.  
QTY.: (1-9)

### Electrical Specifications at 25°C

MODEL NO.	FREQ. (GHz)	REFLECTIVE ABSORPTIVE	INSERTION LOSS (dB)						1 dB COMPRESSION (dBm)			IN-OUT ISOLATION (dB)					
			FREQUENCY BAND						FREQUENCY BAND			FREQUENCY BAND					
			A†		B		C		A	B	C	A		B		C	
Typ.	Max.	Typ.	Max.	Typ.	Max.	Typ.	Typ.	Typ.	Typ.	Min.	Typ.	Min.	Typ.	Min.			
ZSWA-4-30DR	DC - 3	●	1.0	1.8	1.5	3.0	2.0	3.9	18	20	20	50	40	37	32	31	26

A= DC-5 GHz, B= 0.5-2 GHz, C= 2-3 GHz

† Below 100 MHz, 1 dB compression gradually decreases to 10 dBm at 1 MHz.

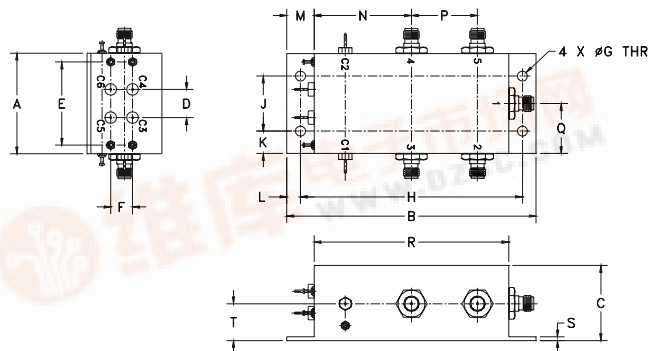
### additional specifications

TTL Control Voltage	0/5.5
Low threshold, V	0.8 max.
High threshold, V	3.5 min.
TTL Control Current	
High V, mA	0.2 max.
Low V, mA	0.02 max.
Positive Supply V.	+5±0.5
Negative Supply V.	-5±0.25
Positive Supply Current, mA	4 max.
Negative Supply Current, mA	20 max.
VSWR (:1)	1.28 typ., ON 1.24 typ., OFF DC-2GHz
Rise/ Fall time (10%-90%), ns	25 typ.
Switching time, 50% of Control to 90% RF (Turn-on), ns	45 typ.
*Video Leakage, mVp-p 0/5V control	30 typ.
Temperature, °C operating	-30 to 85
storage	-55 to 100
MTBF, hrs @85°C case	30X10 <sup>6</sup>

### Pin Configuration

RF IN	1
RF OUT 1	2
RF OUT 2	3
RF OUT 3	4
RF OUT 4	5
CONTROL 1	C5
CONTROL 2	C3
CONTROL 3	C4
CONTROL 4	C6
+5v	C2
-5v	C1

### Outline Drawing



### control logic

Model Series	Control Ports				RF outputs			
	1	2	3	4	1	2	3	4
ZSWA	Low	High	High	High	On	Off	Off	Off
	High	Low	High	High	Off	On	Off	Off
	High	High	Low	High	Off	Off	On	Off
	High	High	High	Low	Off	Off	Off	On

### NOTES:

- \* Video leakage or break through is defined as leakage of TTL switching signal to RF output ports.
- 1. Absolute maximum power and voltage ratings:  
RF input power, 250 mW,  
Supply voltage: ±6 V DC
- 2. OFF state of RF output is low impedance.
- 3. Prices and specifications subject to change without notice.

### Outline Dimensions ( inch mm)

A	B	C	D	E	F	G	H	J	
1.61	4.00	1.20	.45	1.33	.35	.161	3.560	.880	
40.89	101.6	30.48	11.43	33.78	8.89	4.09	90.42	22.35	
K	L	M	N	P	Q	R	S	T	wt.
.36	.22	.44	1.56	1.06	.80	3.12	.06	.59	grams
9.14	5.59	11.18	39.62	26.92	20.32	79.25	1.52	14.99	250.0

