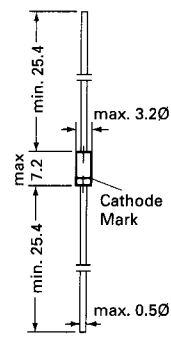


1N 60 P, 1N 60 S  
POINT CONTACT GERMANIUM DIODE

[查询"1N60S"供应商](#)

Point Contact Germanium Diode

1N 60 is a point contact diode employing N-form Germanium and gives an efficient and excellent linearity when used in TV image detection, FM detection, radio AM detection, etc.



Glass case JEDEC DO-7

Dimensions in mm

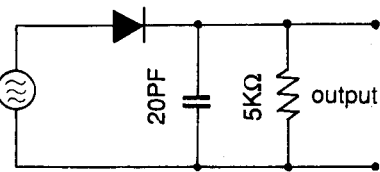
Absolute Maximum Ratings ( $T_a = 25\text{ }^{\circ}\text{C}$ )

	Symbol	Value	Unit
Peak Reverse Voltage	$V_{RM}$	45	V
Reverse Voltage dc	$V_R$	20	V
Peak Forward Current	$I_{FM}$	150	mA
Average Rectified Output Current	$I_O$	50	mA
Surge Forward Current	$I_{surge}$	500	mA
Junction Temperature	$T_j$	75	$^{\circ}\text{C}$
Storage Temperature Range	$T_s$	-55 to + 75	$^{\circ}\text{C}$

Characteristics (1N 60 P)

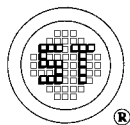
	Symbol	Test condition ( $T_a\ 25 \pm 2\text{ }^{\circ}\text{C}$ )	Min.	Typ.	Max.	Units
Forward Current	$I_F$	$V_F = 1\text{V}$	4	-	-	mA
Reverse Currents	$I_R$	$V_R = 10\text{V}$	-	-	50	$\mu\text{A}$
	$I_R$	-	-	-	100	$\mu\text{A}$
Junction Capacitance C	-	$f = 1\text{MHz}, V = -1\text{V}$	-	-	1	PF
Rectification efficiency	$\eta$	$V_i = 2\text{Vrms}, R = 5\text{K}\Omega$ $C = 20\text{PF}, f = 40\text{ MHz}$	55	-	-	%

Pair  $\Delta I_F \leq 6\text{ mA}$  at 1V,  $\Delta I_R \leq 20\text{ }\mu\text{A}$  at 10V



Input 2Vrms

Rectification Efficiency Measurement Circuit

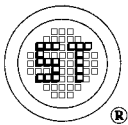
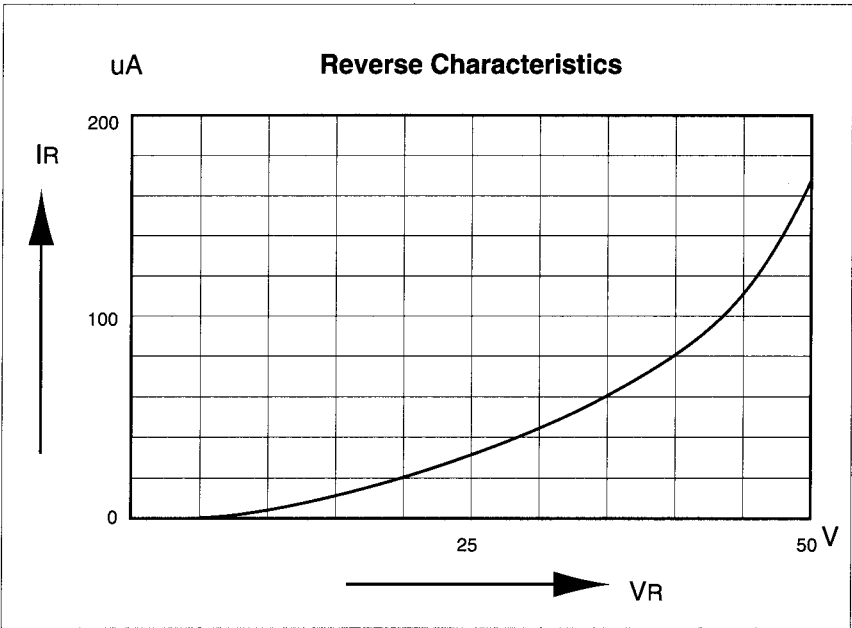
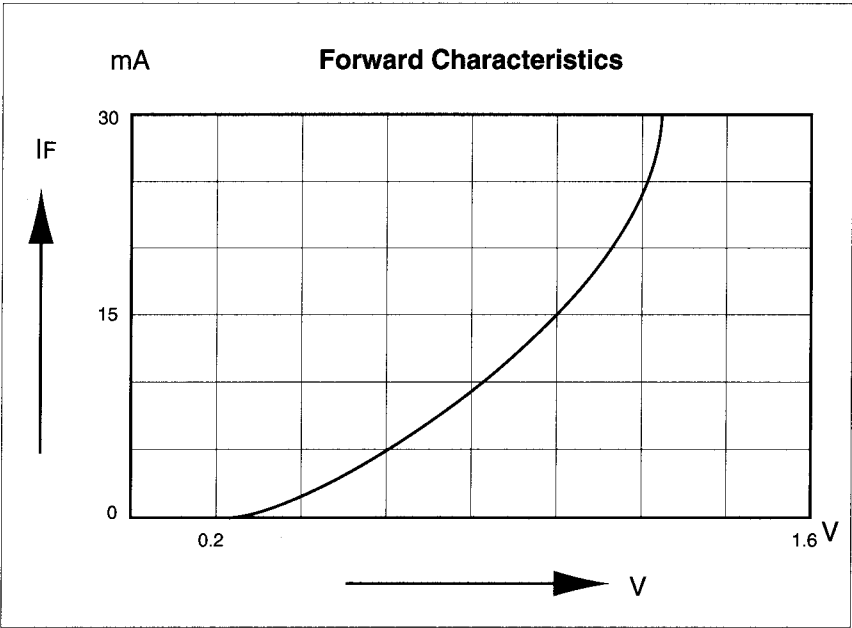


SEMTECH ELECTRONICS LTD.  
( wholly owned subsidiary of HONEY TECHNOLOGY LTD. )



1N 60 P, 1N 60 S  
POINT CONTACT GERMANIUM DIODE

[查询"1N60S"供应商](#)



**SEMTECH ELECTRONICS LTD.**  
( wholly owned subsidiary of **HONEY TECHNOLOGY LTD.** )

