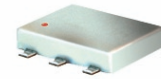


Surface Mount Directional Coupler

ADC-20-4-75+ ADC-20-4-75

75Ω 5 to 1000 MHz



Maximum Ratings

Operating Temperature	-40°C to 85°C
Storage Temperature	-55°C to 100°C

Pin Connections

INPUT	1
OUTPUT	6
COUPLED	3
GROUND	2
75Ω TERM EXTERNAL	4
ISOLATE (DO NOT USE)	5

Features

- wideband, 5-1000 MHz
- low mainline loss, 0.5 dB typ.
- high directivity, 23 dB typ.
- excellent VSWR, 1.15:1 typ.
- excellent coupling flatness, ±0.15 dB typ.
- aqueous washable
- protected by U.S. Patents 6,133,525 & 6,140,887

Applications

- cable tv
- communications

CASE STYLE: CD542
PRICE:\$6.95 ea. QTY (10-49)

+ RoHS compliant in accordance with EU Directive (2002/95/EC)

The +Suffix identifies RoHS Compliance. See our web site for RoHS Compliance methodologies and qualifications.

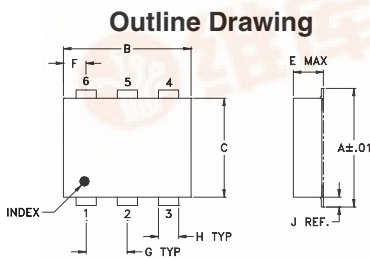
Directional Coupler Electrical Specifications

FREQ. (MHz)	COUPLING (dB)		MAINLINE LOSS ¹ (dB)			DIRECTIVITY (dB)			VSWR (:1)	POWER INPUT, W							
	Nom.	Flatness	L Typ.	M Max.	U Max.	L Typ. Min.	M Typ. Min.	U Typ. Min.		Typ.	L Max.	MU Max.					
5-1000	19.7±0.5	±0.5	0.5	0.8	0.5	1.0	0.6	1.2	22	18	23	15	20	13	1.15	1.0	1.0

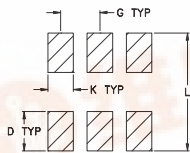
L= 5-50 MHz M= 50-500 MHz U= 500-1000 MHz
1. Mainline loss includes theoretical power loss at coupled port.

Typical Performance Data

Frequency (MHz)	Mainline Loss (dB) In-Out	Coupling (dB) In-Cpl	Directivity (dB)	Return Loss (dB)		Cpl
				In	Out	
5.00	0.52	19.47	22.58	23.30	23.95	19.53
10.00	0.43	19.46	22.63	26.59	27.83	22.72
50.00	0.41	19.51	22.88	30.43	32.90	26.46
150.00	0.43	19.56	23.57	29.02	30.41	26.58
250.00	0.45	19.64	24.05	27.57	28.54	27.66
350.00	0.45	19.69	24.14	25.74	26.33	29.04
500.00	0.49	19.75	23.24	23.76	24.45	30.68
750.00	0.54	19.70	20.88	20.84	22.98	29.86
870.00	0.55	19.65	20.61	20.05	23.79	30.02
1000.00	0.61	19.59	20.45	19.28	25.85	29.66



PCB Land Pattern



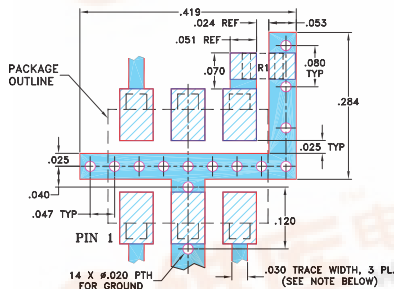
Suggested Layout,
Tolerance to be within ±0.02

Outline Dimensions (inch/mm)

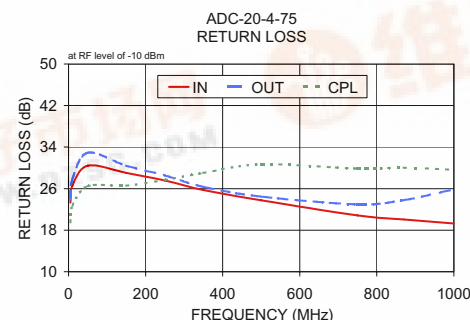
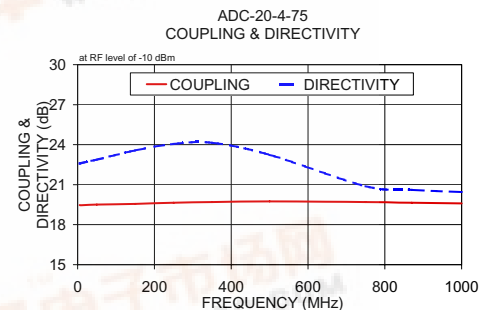
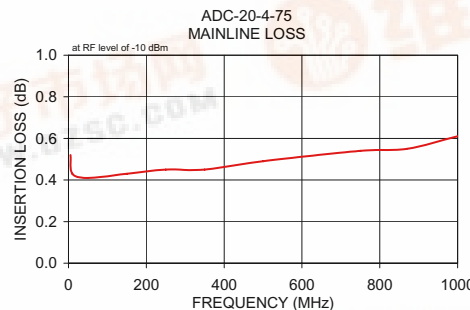
A	B	C	D	E	F	G
.272	.310	.220	.100	.112	.055	.100
6.91	7.87	5.59	2.54	2.84	1.40	2.54

H	J	K	L	wt
.030	.026	.065	.300	grams
0.76	0.66	1.65	7.62	0.20

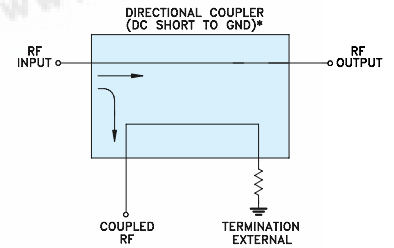
Demo Board MCL P/N: TB-08 Suggested PCB Layout (PL-042)



- RESISTOR R1: 75 Ohm, 0805 SIZE.
1. TRACE WIDTH IS SHOWN FOR ROGERS RO4350B WITH DIELECTRIC THICKNESS .030" ± .002"; COPPER: 1/2 OZ. EACH SIDE. FOR OTHER MATERIALS TRACE WIDTH MAY NEED TO BE MODIFIED.
 2. BOTTOM SIDE OF THE PCB IS CONTINUOUS GROUND PLANE.
- DENOTES PCB COPPER LAYOUT WITH SMOBC (SOLDER MASK OVER BARE COPPER)
 - DENOTES COPPER LAND PATTERN FREE OF SOLDER MASK



Electrical Schematic



* ELECTRICAL SCHEMATIC IS FOR DIRECTIONAL COUPLER WITH INTERNAL TRANSFORMER(S) AND EXTERNAL TERMINATION.

Mini-Circuits
ISO 9001 ISO 14001 AS 9100 CERTIFIED

minicircuits.com

REV. D
M119986
ED-6814/1
ADC-20-4-75
WZ/TD/CP/AM
081111



The Design Engineers Search Engine Provides ACTUAL Data Instantly From MINI-CIRCUITS At: www.minicircuits.com

IF/RF MICROWAVE COMPONENTS