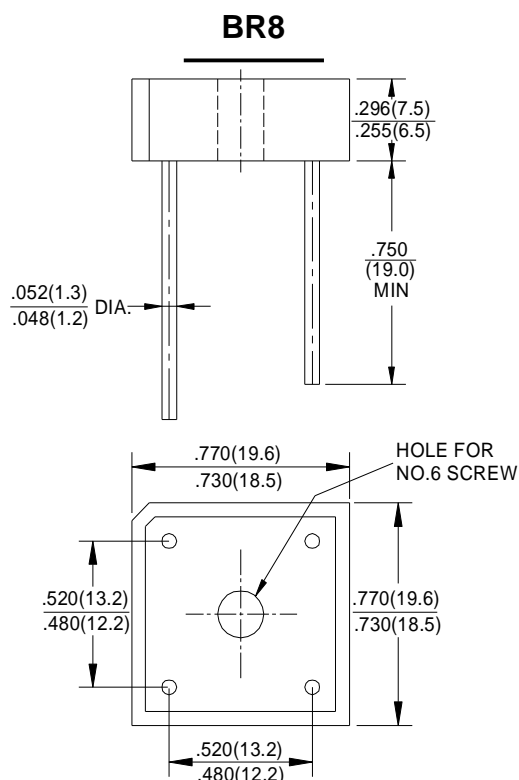


**GLASS PASSIVATED
BRIDGE RECTIFIERS**

REVERSE VOLTAGE - **50 to 1000Volts**
 FORWARD CURRENT - **8.0 Amperes**

FEATURES

- Surge overload rating -175 amperes peak
- Low forward voltage drop
- Small size; simple installation
- Silver plated copper leads
- Mounting position: Any



Polarity shown on side of case, Positive lead by beveled corner.

Dimensions in inches and (millimeters)

MAXIMUM RATINGS AND ELECTRICAL CHARACTERISTICS

Rating at 25°C ambient temperature unless otherwise specified.

Single phase, half wave ,60Hz, resistive or inductive load.

For capacitive load, derate current by 20%

| CHARACTERISTICS | SYMBOL | BR8005G | BR801G | BR802G | BR804G | BR806G | BR808G | BR810G | UNIT |
|---|-------------------|-------------|--------|--------|--------|--------|--------|--------|----------|
| Maximum Recurrent Peak Reverse Voltage | V _{RRM} | 50 | 100 | 200 | 400 | 600 | 800 | 1000 | V |
| Maximum RMS Bridge Input Voltage | V _{RMS} | 30 | 70 | 140 | 280 | 420 | 560 | 700 | V |
| Maximum Average Forward Rectified Output Current at T _C =100°C (Note1) T _A =50°C (Note2) | I _(AV) | 8.0 3.0 | | | | | | | A |
| Peak Forward Surge Current 8.3ms Single Half Sine-Wave Super Imposed on Rated Load | I _{FSM} | 175 | | | | | | | A |
| Maximum Forward Voltage Drop Per Bridge Element at 4.0A Peak | V _F | 1.1 | | | | | | | V |
| Maximum Reverse Current at Rated DC Blocking Voltage Per Element T _A =25°C T _A =100°C | I _R | 10.0 1.0 | | | | | | | uA mA |
| Operating Temperature Range | T _J | -55 to +150 | | | | | | | °C |
| Storage Temperature Range | T _{STG} | -55 to +150 | | | | | | | °C |

Notes: 1. Unit mounted on metal chassis

2. Unit mounted on P.C. board

FIG.1-DE Rating CURVE FOR
OUTPUT RECTIFIED CURRENT

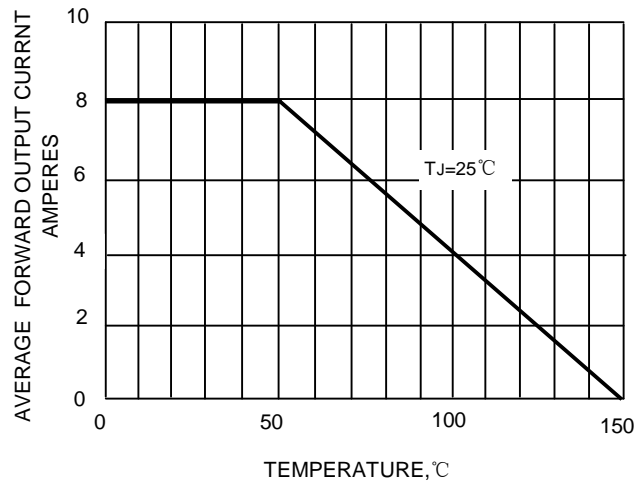


FIG.2-MAXIMUM FORWARD SURGE CURRENT

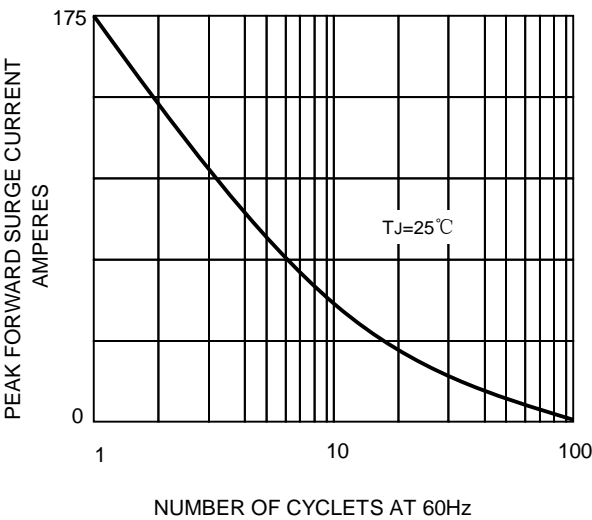


FIG.3-TYPICAL FORWARD
CHARACTERISTICS

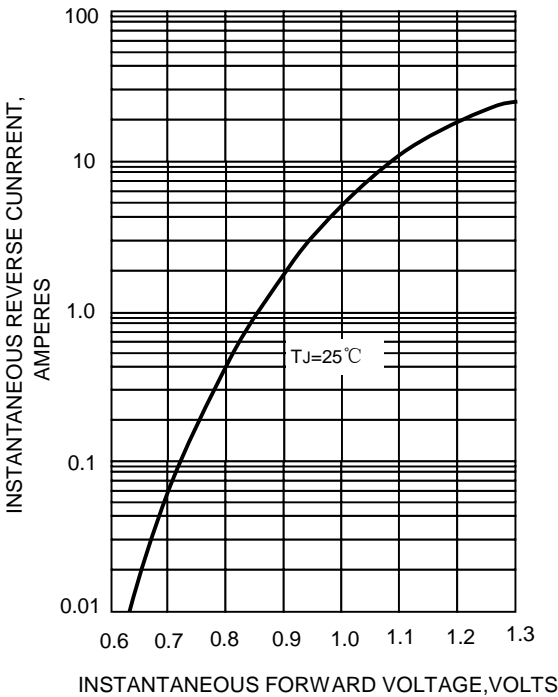


FIG.4-TYPICAL REVERSE
CHARACTERISTICS

