

K12

High Performance Key Switches

[查询"K12115NOD"供应商](#)

Features/Benefits

- **Excellent tactile feel**
- **Wide choice of LED colors, travel and actuator forces**
- **High reliability / long life**
- **Sealed version available**
- **Designed for low-level switching**
- **Double stroke version available**
- **Detector version available**

Typical Applications

- **Automotive**
- **Off-road transportation**
- **Industrial electronics**
- **Computers & network equipment**



Construction:

FUNCTION: momentary

DISTANCE BETWEEN BUTTON CENTERS:
min. 11 (0.433) K12C = 13 (0.512)

TERMINALS: PC pins, tinned

MOUNTING: Locating pins; K12D, K12G and K12P additionally
with snap-in housing

Mechanical

TOTAL TRAVEL: 1 mm, 1.5 mm, 2 mm

SWITCHING TRAVEL: 0.6 mm*

OPERATING FORCE: 1.5 N OD without snap-point as detector
switch, 2.5 N, 3.5 N, 5 N, 3.5/7 N, 6/12 N

PROTECTION CLASS: K12C IP 67 (dust tight, protected against
the effects of immersion in water; other versions IP 50)

* Additional switching travel (with pre-travel) available by request.

NOTE: Product to be offered compliant and compatible on Q1 2006.

Electrical

SWITCHING POWER MIN./MAX.: 0.02mW/3 W

SWITCHING VOLTAGE MIN./MAX.: 2 V DC / 30 V DC

SWITCHING CURRENT MIN./MAX.: 10 μ A / 100 mA

DIELECTRIC STRENGTH (50 Hz, 1 min): ≥ 500 V

OPERATING LIFE with max. switching power: $\geq 10^6$ operations

K12G & K12GO; operating life of second switch 5×10^4 operations

CONTACT RESISTANCE: Initial ≤ 50 m Ω

INSULATION RESISTANCE: $\geq 10^{10}$ Ω

BOUNCE TIME: ≤ 1 ms

Operating speed 400 mm/s (15.75/s)

Environmental

OPERATING TEMPERATURE: -40°C to 85°C.

STORAGE TEMPERATURE: -40°C to 95°C.

Process

SOLDERABILITY:

Max. soldering time and temperature: 5 s at 260°C

How To Order

Our easy build-a-switch concept allows you to mix and match options to create the switch you need. To order, select desired option from each category and place it in the appropriate box.



Series

- K12A** No snap-in pegs
- K12AL** No snap-in pegs with central LED
- K12P** With snap-in pegs
- K12PL** With central LED
- K12C** Sealed contact with rubber cap (IP 67)
- K12GO** Two-step switch without side LED holder
- K12GOL** K12GO with central LED

Cap Color

- NONE** version with LED
- BK** Black cap – No LED

LED Color

- NONE** No LED
- GN** Green
- YE** Yellow
- OG** Orange
- RD** Red
- WH** White
- BU** Blue

Standard LED Code

- NONE** No LED
- L306** Green
- L327** Yellow
- L315** Orange
- L352** Red
- L302** White
- L328** Blue

Travel*

- 1** 1 mm (0.039)
- 1.5** 1.5 mm (0.059)
- 2** 2 mm (0.079)

Operating Force

- 1.5N OD** 1.5 N without snap-point
- 2.5N** 2.5 N
- 3.5N** 3.5 N
- 5N** 5 N
- 3.5/7N** 3.5/7 N**
- 6/12N** 6/12 N**

Contact Arrangement

- NONE** SPST NO (STD)
- 1R** SPST NC (Special request)

* K12C – 1mm MAX
K12 with LED – 1.5 mm MAX
** K12G & K12GO version only



Dimensions are shown: mm (inch)
Specifications and dimensions subject to change

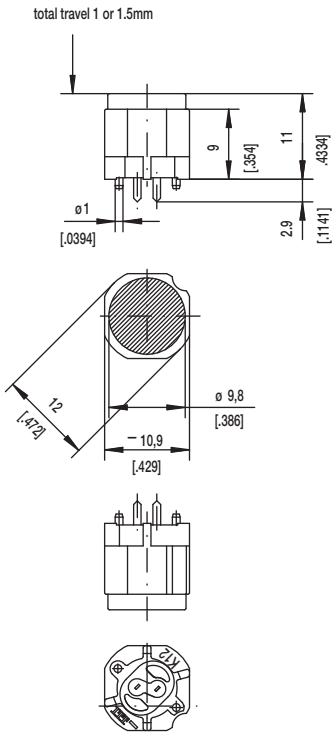
www.ittcannon.com

K12
High Performance Key Switches

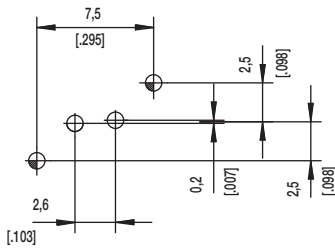
[查询"K12115NOD"供应商](#)

SERIES 

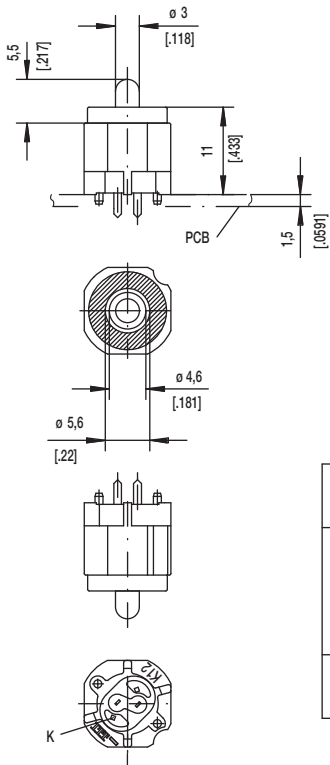
K12A



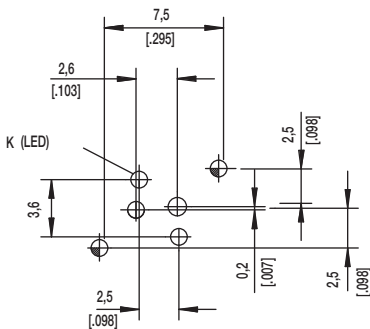
PCB LAYOUT, MOUNTING SIDE





K12AL



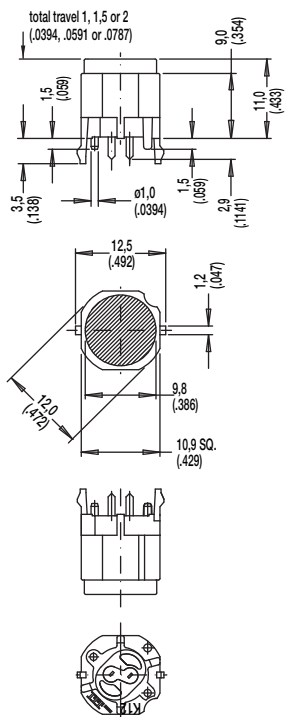
PCB LAYOUT, MOUNTING SIDE



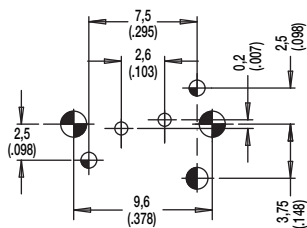
	1,1 ^{+0,05}	2x	2x	center hole		
	0,9 ±0,05		2x	LED	ø0,5 (.020)	Sn
		2x	2x	switch	0,7x0,2 (.028x.081)	Sn
Hole	ø	Without	with LED	Discription	Terminal Section	Surface

High Performance Key Switches

K12P







PCB LAYOUT, MOUNTING SIDE

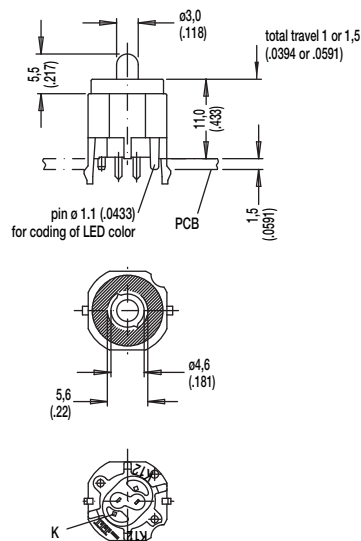


center of actuation area (notice LED)

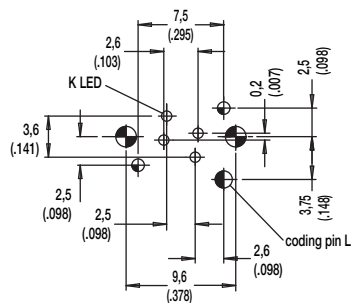


Hole	Ø	Without LED	Description	Terminal Section	Surface
	1,7 (.069)	2x	snap-in		
	1,6 (.062)	1x	coding hole (L,M,N)		
	1,1 (.043)	2x	center hole		Sn
	0,9 (.035)	2x	LED switch	m0.5 (.020) 0.7 x 0.2 (.028 x .081)	Sn

K12PL







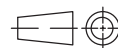
PCB LAYOUT, MOUNTING SIDE



center of actuation area (notice LED)



Hole	Ø	Without LED	Description	Terminal Section	Surface
	1,7 (.069)	2x	snap-in		
	1,6 (.062)	1x	coding hole (L,M,N)		
	1,1 (.043)	2x	center hole		Sn
	0,9 (.035)	2x	LED	m0.5 (.020)	Sn
		2x	switch	0.7 x 0.2 (.028 x .081)	



First Angle Projection

Dimensions are shown: mm (inch)
Specifications and dimensions subject to change

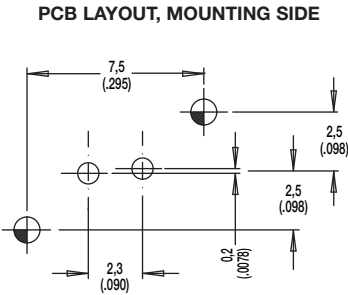
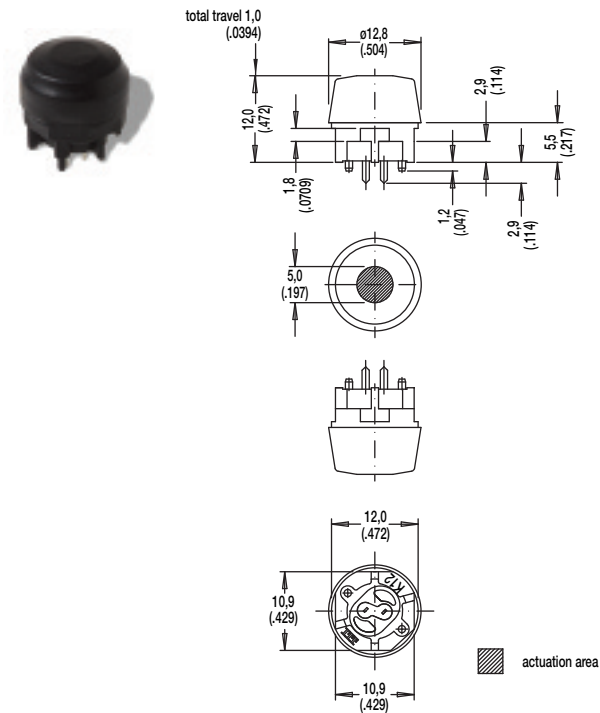
www.ittcannon.com

K12 High Performance Key Switches

查询"K12115NOD"供应商

SERIES

K12C SEALED CONTACT WITH RUBBER CAP (IP 67)



SCHEMATIC	
A	R

Hole	Ø	Without LED	With LED	Description	Terminal Section	Surface
	1,1 (.043)	2x	2x	center hole		
	0,9 (.035)		2x	LED	m0.5 (.0204)	Sn
		2x	2x	switch	0.7 x 0.2(.0275 x .0787)	Sn



Key Switches

K12

High Performance Key Switches

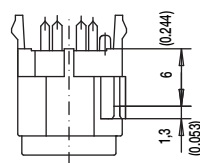
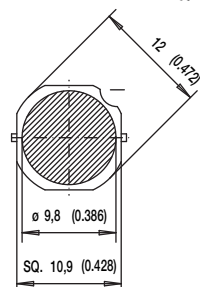
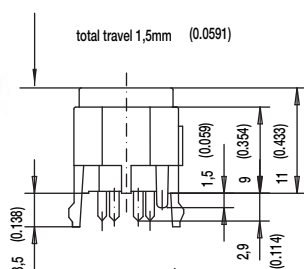
[查询"K12115NOD"供应商](#)

SERIES

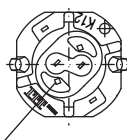
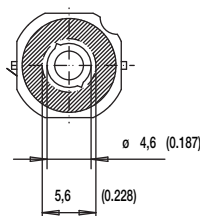
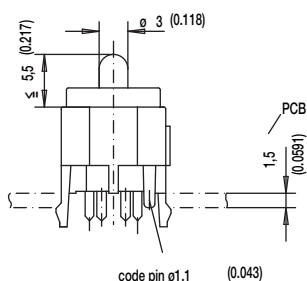
K12G0
K12GOL



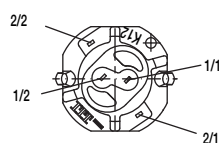
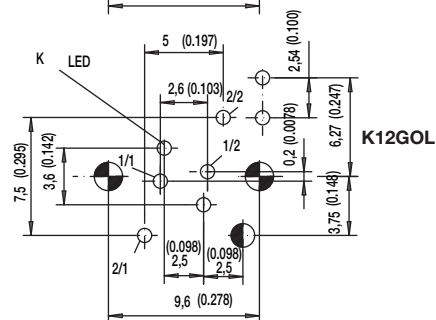
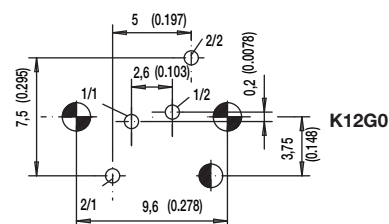
K12G0



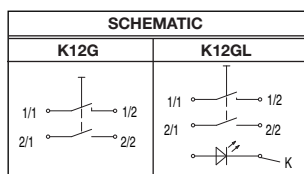
K12GOL



PCB LAYOUT, MOUNTING SIDE



actuation area



Hole	Ø	Without LED	With LED	Description	Terminal Section	Surface
	1,7 (.069)	2x	2x	snap-in		
	1,6 (.062)	1x	1x	code		
	0,9 (.035)		2x	2 LED		Sn
			2x	LED	m0.5 (.020)	Sn
		2x	2x	switch 2	0.7 x 0.3 (.028 x .012)	Sn
		2x	2x	switch 1	0.7 x 0.2 (.028 x .081)	Sn

查询"K12115NOD"供应商

CAP COLOR



OPTION CODE	COLOR
NONE	Version with LED
BK	Black

LED COLOR



OPTION CODE	COLOR
NONE	Models without LED
GN	Green
YE	Yellow
OG	Orange
RD	Red
WH	White
BU	Blue

STANDARD LED CODE	COLOR
NONE	Models without LED
L306	Green
L327	Yellow
L315	Orange
L352	Red
L302	White
L328	Blue

TRAVEL



1 1 mm
1.5 1.5 mm
2 2 mm

OPERATING FORCE



OPTION CODE	OPERATING FORCE
1.5N OD	1.5 N,150g without snap-point
2.5N	2.5 N, 250g
3.5N	3.5 N, 350g
5N	5 N, 500g
3.5/7N	3.5/7 N, 350/700g
6/12N	6/12 N, 600-1200g



First Angle Projection

Dimensions are shown: mm (inch)
Specifications and dimensions subject to change

www.ittcannon.com