

查询"161870"供应商

7259335

Type CPE10-M1H-...M7

Solenoid valve

without plug socket, with manual override

with thread M7

Type CPE10-M1H-3GL-M7

with thread M5

Type CPE10-M1H-3GL-M5

with QS push-in fitting

for external tubing dia. 4 mm

Type CPE10-M1H-3GL-QS-4

with QS push-in fitting

for external tubing dia. 6 mm

Type CPE10-M1H-3GL-QS-6

Valves with auxiliary pilot air connection

with M7 thread

Type CPE10-M1H-3GLS-M7

with thread M5

Type CPE10-M1H-3GLS-M5

with QS push-in fitting

for external tubing dia. 4 mm

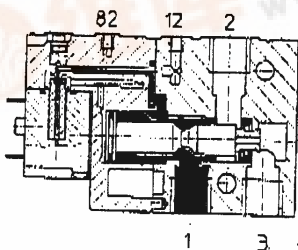
Type CPE10-M1H-3GLS-QS-4

with QS push-in fitting

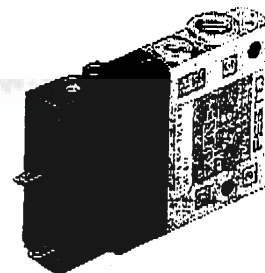
for external tubing dia. 6 mm

Type CPE10-M1H-3GLS-QS-6

Example: Type CPE10-M1H-3GL-M7

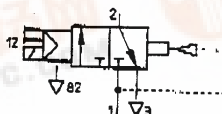


New

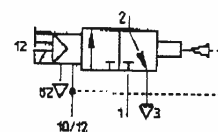


Function:

Type CPE10-M1H-3GL-...



Type CPE10-M1H-3GLS-...



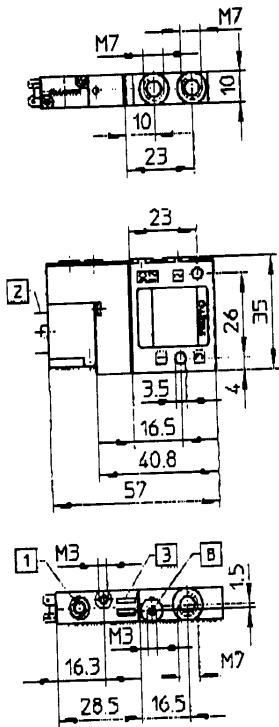
Compact Performance (CP) valves are distinguished by their very slim design and low electrical power consumption combined with very high flow rates. When voltage is applied, the solenoid is energised and the valve is switched. These valves have low power consumption and are thus suitable for direct electronic activation.

Accessories, see overleaf.

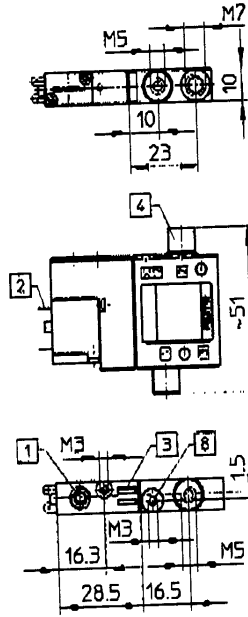
Order code	161 870 CPE10-M1H-3GL-M7	162 887 CPE10-M1H-3GL-QS-4
Part No./Type	162 886 CPE10-M1H-3GL-M5	162 888 CPE10-M1H-3GL-QS-6
with auxiliary pilot air	161 871 CPE10-M1H-3GLS-M7	162 890 CPE10-M1H-3GLS-QS-4
	162 889 CPE10-M1H-3GLS-M5	162 891 CPE10-M1H-3GLS-QS-6
Medium	Compressed air, filtered (lubricated or unlubricated)	
Design	Piston spool valve	
Mounting	2 holes, (dia. 3.5 mm)	
Connection	1, 2, 3	1, 2: M7 or M5; 3: M7
	10, 12, 82	1, 2: dia. 4 mm or 6 mm; 3: M7 10, 12: dia. 3 mm; 82: M3
Nominal size	4 mm	
Nominal flow rate	430 l/min	
Pressure range	Without auxiliary pilot air: 2.5 to 8 bar; with auxiliary pilot air: -0.9 to +10 bar	
Auxiliary pressure range	2.5 to 8 bar	
Switching times	On: 18 ms; off: 14 ms	
Ambient temperature	-10 to +50 °C	
Medium temperature	-10 to +50 °C	
Material	Die-cast Al, PA, St, NBR	
Weight	-	
Operating voltage	24 V DC ±10%	
Power consumption	1 W	
Duty cycle	100%	
Degree of protection with plug socket	IP 65 (DIN 40050)	



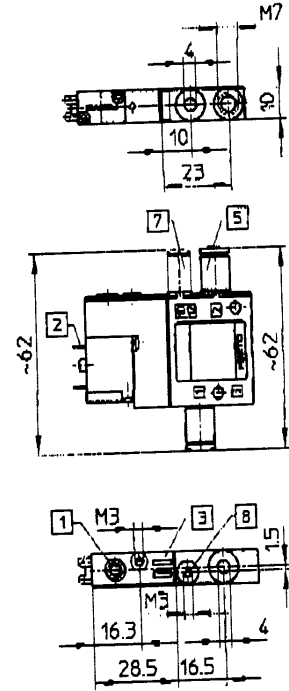
Type CPE10-M1H-3GL-M7
CPE10-M1H-3GLS-M7



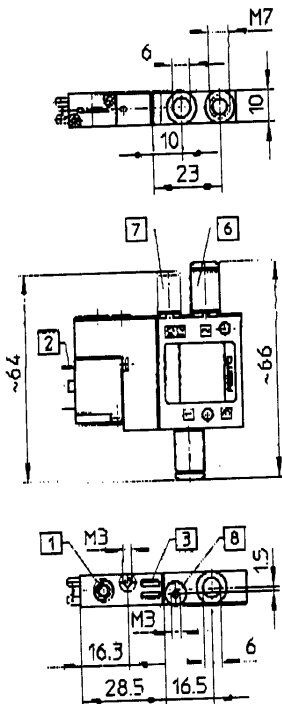
Type CPE10-M1H-3GL-M5
CPE10-M1H-3GLS-M5



Type CPE10-M1H-3GL-QS-4
CPE10-M1H-3GLS-QS-4



Type CPE10-M1H-3GL-QS-6
CPE10-M1H-3GLS-QS-6



- 1 Manual override (push to reset)
- 2 Connection for plug socket type KMYZ-2...
- 3 Space for inscription labels
- 4 Reducing sleeve M7 to M5, type QMR-M7-M6-I
- 5 QS push-in threaded fitting type QSM-M7-4-I
- 6 QS push-in threaded fitting type QSM-M7-6-I
- 7 QS push-in threaded fitting for external tubing dia. 3 mm type QSM-M3-3-I (for type CPE10-M1H-3GLS-QS-... included in scope of delivery)
- 8 Auxiliary pilot air connection (for type CPE10-M1H-3GLS-...)

Accessories:

Socket with cable:

Order code 34 997 KMYZ-2-24-2.5-LED (2.5 m)

34 998 KMYZ-2-24-5-LED (5 m)

See sheet 4.2/362-4

Silencers:

Order code 163 978 U-M3 for connection B2

161 418 UC-M7 for connection 3

See sheet 9/90-5

Manual override:

Order code 157 600 AHB-MZB

Pilot pressure in relation to operating pressure for type CPE10-M1H-3GLS-...

