

CMOS QUAD LOW-TO-HIGH VOLTAGE SHIFTER

Check for Samples: [CD40109B-Q1](#)

FEATURES

- Qualified for Automotive Applications
- Independent of Power Supply Sequence Considerations
 - V_{CC} Can Exceed V_{DD}
 - Input Signals can Exceed Both V_{CC} and V_{DD}
- Up and Down Level-Shifting Capability
- Three-State Outputs With Separate Enable Controls
- Standardized Symmetrical Output Characteristics
- 100% Tested for Quiescent Current at 20 V
- Maximum Input Current:
 - 1 μ A at 18 V Over Full Package-Temperature Range
 - 100 nA at 18 V and 25°C
- Noise Margin (Full Package-Temperature Range):
 - 1 V at $V_{CC} = 5$ V, $V_{DD} = 10$ V
 - 2 V at $V_{CC} = 10$ V, $V_{DD} = 15$ V
- 5-V, 10-V, and 15-V Parametric Ratings

- Meets All Requirements of JEDEC Tentative Standard No. 13B, "Standard specifications for Description of 'B' Series CMOS Devices"
- Latch-Up Performance Meets 50 mA per JESD 78, Class I

APPLICATIONS

- High-or-Low Level-Shifting With Three-State Outputs for Unidirectional or Bidirectional Bussing
- Isolation of Logic Subsystem Using Separate Power Supplies from Supply Sequencing, Supply Loss, and Supply Regulation Considerations

NS PACKAGE
(TOP VIEW)



DESCRIPTION

CD40109B contains four low-to-high-voltage level-shifting circuits. Each circuit will shift a low-voltage digital-logic input signal (A, B, C, D) with logical 1 = V_{CC} and logical 0 = V_{SS} to a high-voltage output signal (E, F, G, H) with logical 1 = V_{DD} and logical 0 = V_{SS} .

The RCA-CD40109, unlike other low-to-high level-shifting circuits, does not require the presence of the high-voltage supply (V_{DD}) before the application of either the low-voltage supply (V_{CC}) or the input signals. There are no restrictions on the sequence of application of V_{DD} , V_{CC} , or the input signals. In addition, with one exception there are no restrictions on the relative magnitudes of the supply voltages or input signals within the device maximum ratings, provided that the input signal swings between V_{SS} and at least 0.7 V_{CC} ; V_{CC} may exceed V_{DD} , and input signals may exceed V_{CC} and V_{DD} . When operated in the mode $V_{CC} > V_{DD}$, the CD40109 will operate as a high-to-low level-shifter.

The CD40109 also features individual three-state output capability. A low level on any of the separately enabled three-state output controls produces a high-impedance state in the corresponding output.

ORDERING INFORMATION⁽¹⁾

T_A	PACKAGE ⁽²⁾		ORDERABLE PART NUMBER	TOP-SIDE MARKING
–40°C to 125°C	SOIC – NS	Reel of 2000	CD40109BQNSRQ1	CD40109BQ

(1) For the most current package and ordering information, see the Package Option Addendum at the end of this document, or see the TI web site at www.ti.com.

(2) Package drawings, thermal data, and symbolization are available at www.ti.com/packaging.



Please be aware that an important notice concerning availability, standard warranty, and use in critical applications of Texas Instruments semiconductor products and disclaimers thereto appears at the end of this data sheet.

PRODUCTION DATA information is current as of publication date. Products conform to specifications per the terms of the Texas Instruments standard warranty. Production processing does not necessarily include testing of all parameters.

Copyright © 2010, Texas Instruments Incorporated





This integrated circuit can be damaged by ESD. Texas Instruments recommends that all integrated circuits be handled with appropriate precautions. Failure to observe proper handling and installation procedures can cause damage.

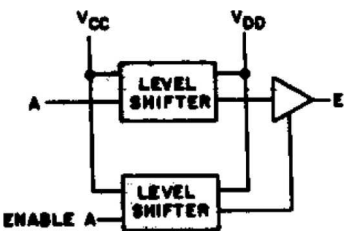
ESD damage can range from subtle performance degradation to complete device failure. Precision integrated circuits may be more susceptible to damage because very small parametric changes could cause the device not to meet its published specifications.

TRUTH TABLE⁽¹⁾

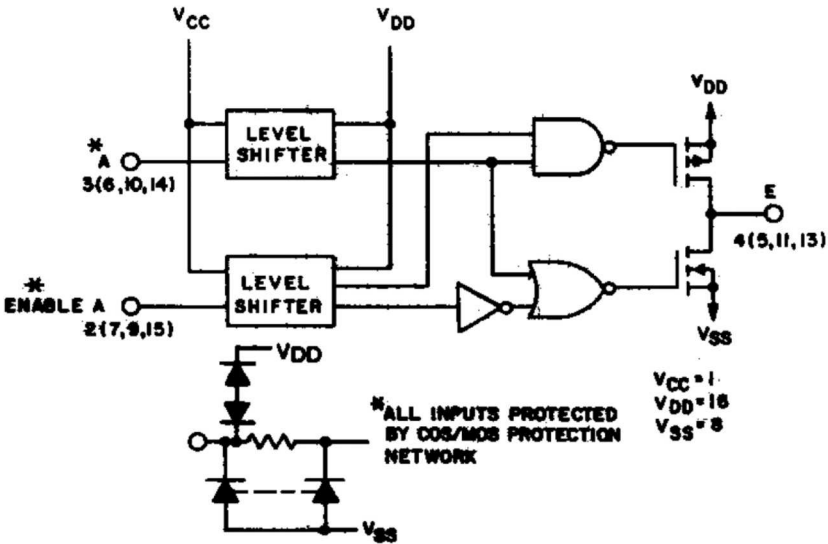
INPUTS		OUTPUTS
A, B, C, D	ENABLE A, B, C, D	E, F, G, H
0	1	0
1	1	1
X	0	Z

(1) 0 = V_{SS} , 1 = V_{CC} at inputs and V_{DD} at outputs, X = Don't care, Z = High impedance

Functional Diagram (1 of 4 Units)



Logic Diagram (1 of 4 Units)



ABSOLUTE MAXIMUM RATINGS⁽¹⁾

over operating free-air temperature range (unless otherwise noted)

			VALUE	UNIT
V _{DD}	DC supply voltage range	Voltages referenced to V _{SS} terminal	–0.5 to +20	V
	Output voltage range	All outputs	–0.5 to V _{DD} + 0.5	V
	DC input current	Any one input	±10	mA
P _D	Power dissipation per package	T _A = –40°C to + 100°C	500	mW
		T _A = 100°C to + 125°C	Derate linearly at 12 mW/°C to 200 mW	
	Device dissipation per output transistor (for T _A = full package-temperature range, all package types)		100	mW
T _A	Operating-temperature range		–40 to +125	°C
T _{stg}	Storage temperature range		–65 to +150	°C
	Latch-Up Performance per JEDEC 78, Class I		50	mA

- (1) Stresses beyond those listed under *absolute maximum ratings* may cause permanent damage to the device. These are stress ratings only, and functional operation of the device at these or any other conditions beyond those indicated under *recommended operating conditions* is not implied. Exposure to absolute-maximum-rated conditions for extended periods may affect device reliability.

RECOMMENDED OPERATING CONDITIONS

		MIN	MAX	UNIT
V _{DD}	Supply-voltage range (for T _A = full package-temperature range)	3	18	V

STATIC ELECTRICAL CHARACTERISTICS

PARAMETER		CONDITIONS			LIMITS AT INDICATED TEMPERATURES (°C)						UNIT
		V _O (V)	V _{IN} (V)	V _{DD} (V)	−40	+85	+125	+25			
								MIN	TYP	MAX	
I _{DD} Max	Quiescent device current		0, 5	5	1	30	30	0.02	1	μA	
			0, 10	10	2	60	60	0.02	2		
			0, 15	15	4	120	120	0.02	4		
			0, 20	20	20	600	600	0.04	20		
I _{OL} Min	Output low (sink) current	0.4	0, 5	5	0.61	0.42	0.36	0.51	1	mA	
		0.5	0, 10	10	1.5	1.1	0.9	1.3	2.6		
		1.5	0, 15	15	4	2.8	2.4	3.4	6.8		
I _{OH} Min	Output high (source) current	4.6	0, 5	5	−0.61	−0.42	−0.36	−0.51	−1	mA	
		2.5	0, 5	5	−1.8	−1.3	−1.15	−1.6	−3.2		
		9.5	0, 10	10	−1.5	−1.1	−0.9	−1.3	−2.6		
		13.5	0, 15	15	−4	−2.8	−2.4	−3.4	−6.8		
V _{OL} Max	Output voltage: low-level		0, 5	5	0.05			0	0.05	V	
			0, 10	10	0.05			0	0.05		
			0, 15	15	0.05			0	0.05		
V _{OH} Min	Output voltage: high-level		0, 5	5	4.95			4.95	5	V	
			0, 10	10	9.95			9.95	10		
			0, 15	15	14.95			14.95	15		
I _{IN} Max	Input current		0, 18	18	±0.1	±1	±1	±10 ^{−5}	±0.1	μA	
I _{OUT} Max			0, 18	18	±0.4	±12	±12	±10 ^{−4}	±0.4	μA	
V _{IL} Max	Input low voltage	1, 9	5	10	1.5			1.5			V
		1.5, 13.5	10	15	3			3			
V _{IH} Min	Input high voltage	1, 9	5	10	3.5			3.5			V
		1.5, 13.5	10	15	7			7			

DYNAMIC ELECTRICAL CHARACTERISTICS

$T_A = 25^\circ\text{C}$, Input $t_r/t_f = 20\text{ ns}$, $C_L = 50\text{ pF}$, $R_L = 200\text{ k}\Omega$ (unless otherwise noted)

PARAMETER	TEST CONDITIONS	SHIFTING MODE	V_{CC} (V)	V_{DD} (V)	MIN	MAX	UNIT
t_{PHL} Propagation delay time, high-to-low level, data input to output		L – H	5	10	300	600	ns
			5	15	220	440	
			10	15	180	360	
		H – L	10	5	250	500	
			15	5	250	500	
			15	10	120	240	
t_{PLH} Propagation delay time, low-to-high level, data input to output		L – H	5	10	130	260	ns
			5	15	120	240	
			10	15	70	140	
		H – L	10	5	230	460	
			15	5	230	460	
			15	10	80	160	
t_{PHZ} Propagation delay time, 3-state disable, delay, output high to high impedance	$R_L = 1\text{ k}\Omega$	L – H	5	10	60	120	ns
			5	15	75	150	
			10	15	35	70	
		H – L	10	5	200	400	
			15	5	200	400	
			15	10	40	80	
t_{PLZ} Propagation delay time, 3-state disable, delay, output low to high impedance	$R_L = 1\text{ k}\Omega$	L – H	5	10	370	740	ns
			5	15	300	600	
			10	15	250	500	
		H – L	10	5	250	500	
			15	5	250	500	
			15	10	130	260	
t_{PZH} Propagation delay time, 3-state disable, delay, output high impedance to high	$R_L = 1\text{ k}\Omega$	L – H	5	10	320	640	ns
			5	15	230	460	
			10	15	180	360	
		H – L	10	5	300	600	
			15	5	300	600	
			15	10	130	260	
t_{PZL} Propagation delay time, 3-state disable, delay, output high impedance to low	$R_L = 1\text{ k}\Omega$	L – H	5	10	100	200	ns
			5	15	80	160	
			10	15	40	80	
		H – L	10	5	200	400	
			15	5	200	400	
			15	10	40	80	
t_{THL}, t_{TLH} Transition time		L – H	5	10	50	100	ns
			5	15	40	80	
			10	15	40	80	
		H – L	10	5	100	200	
			15	5	100	200	
			15	10	50	100	
C_i Input capacitance			Any input		5	7.5	pF

TYPICAL CHARACTERISTICS

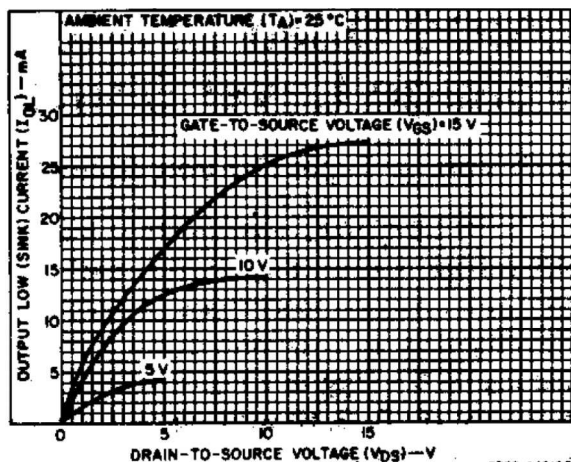


Figure 1. Typical Output Low (Sink) Current Characteristics

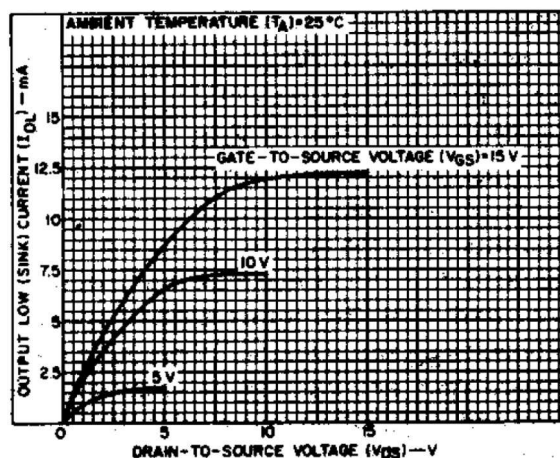


Figure 2. Minimum Output Low (Sink) Current Characteristics

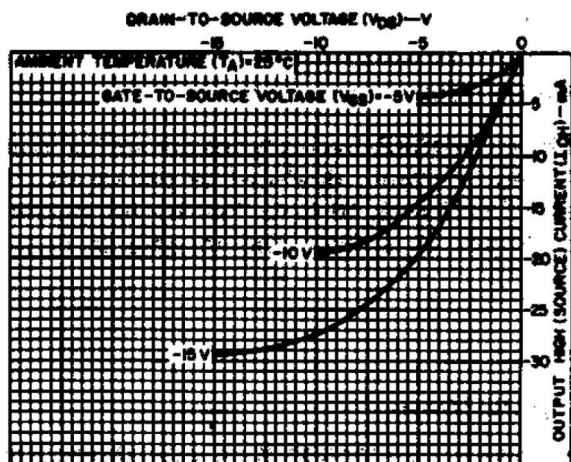


Figure 3. Typical Output High (Source) Current Characteristics

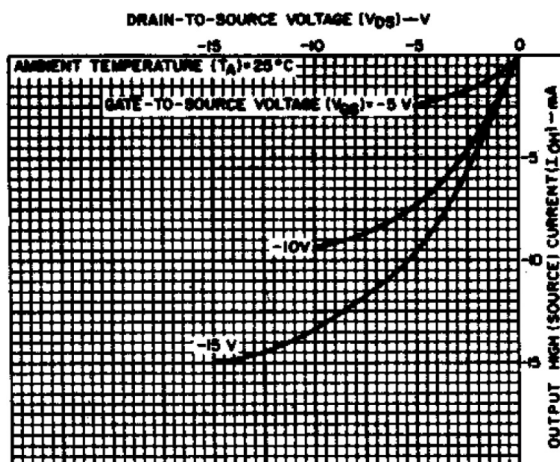


Figure 4. Minimum Output High (Source) Current Characteristics

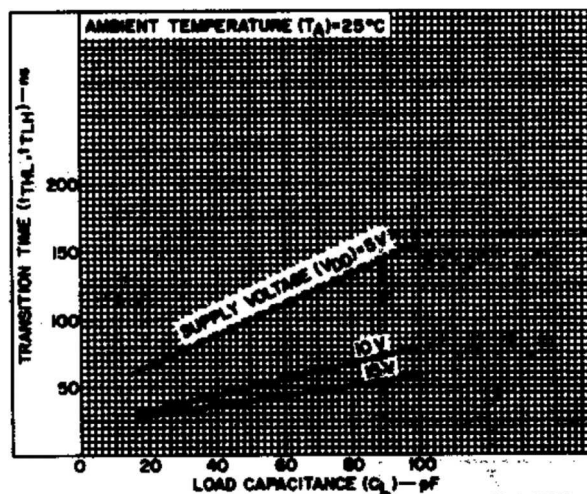


Figure 5. Typical Transition Time as a Function of Load Capacitance

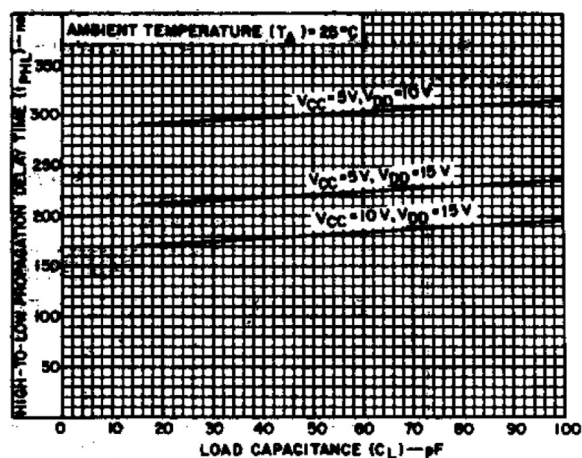


Figure 6. Typical High-to-Low Propagation Delay Time as a Function of Load Capacitance

TYPICAL CHARACTERISTICS (continued)

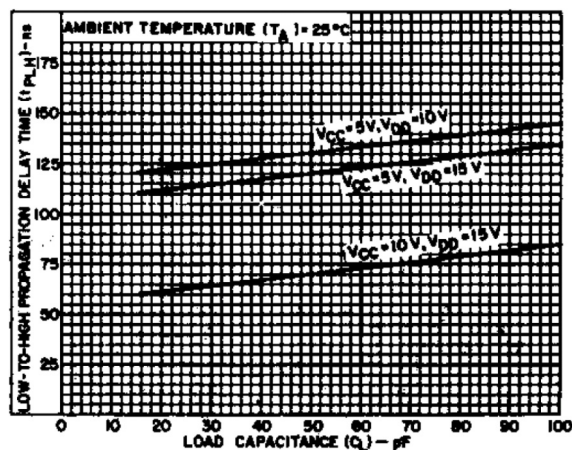


Figure 7. Typical Low-to-High Propagation Delay Time as a Function of Load Capacitance

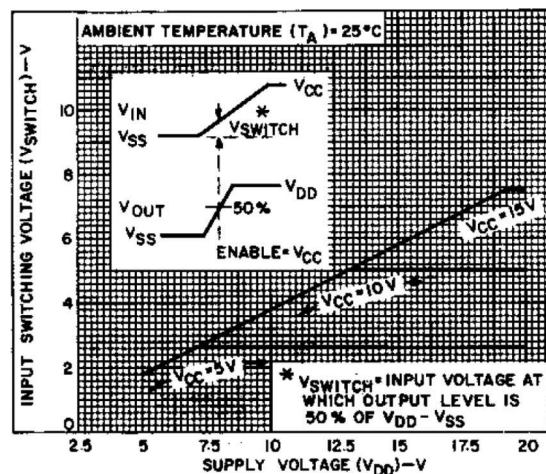


Figure 8. Typical Input Switching as a Function of High-Level Supply Voltage

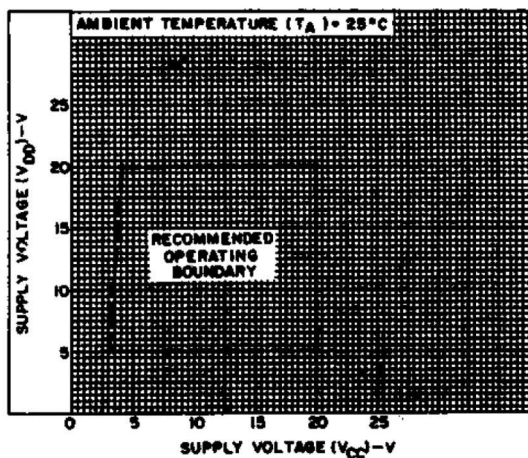


Figure 9. High-Level Supply Voltage vs Low-Level Supply Voltage

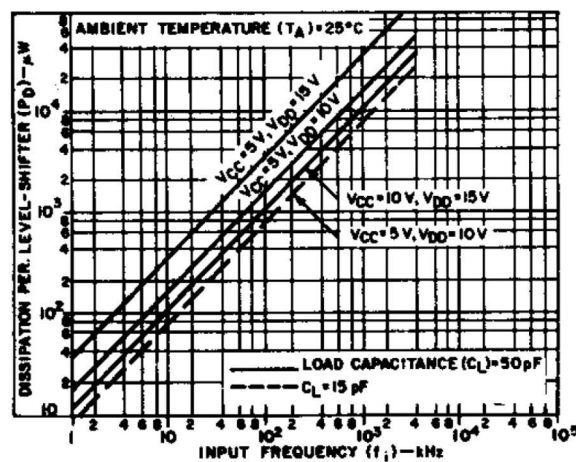


Figure 10. Typical Dynamic Power Dissipation as a Function of Input Frequency

PARAMETER MEASUREMENT INFORMATION

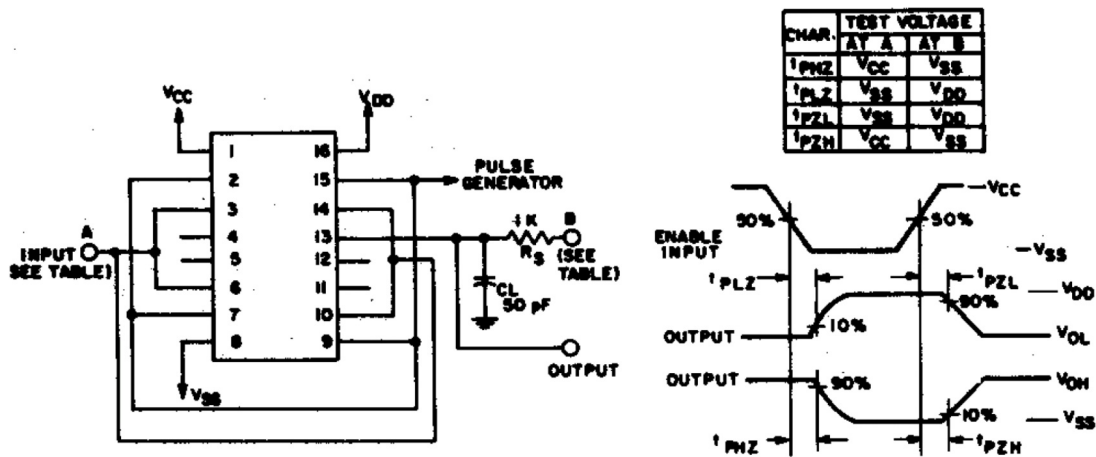


Figure 11. Output Enable Delay Times Test Circuit and Waveforms

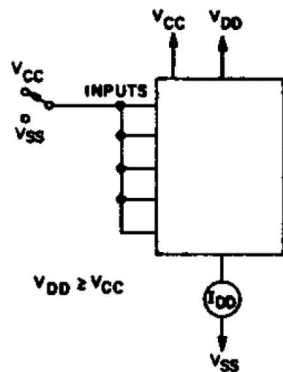


Figure 12. Quiescent Device Current Test Circuit

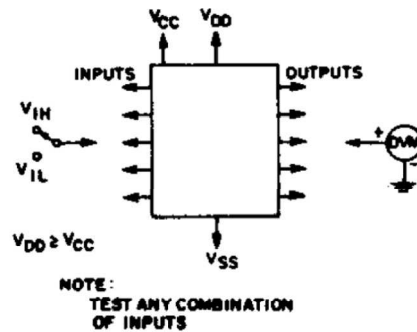


Figure 13. Input Voltage Test Circuit

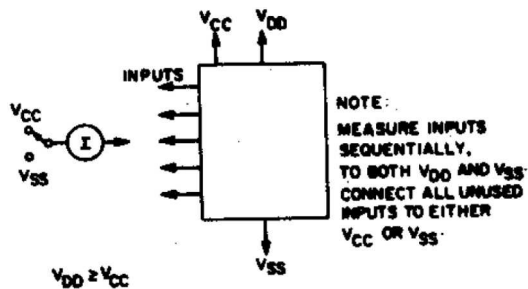


Figure 14. Input Current Test Circuit

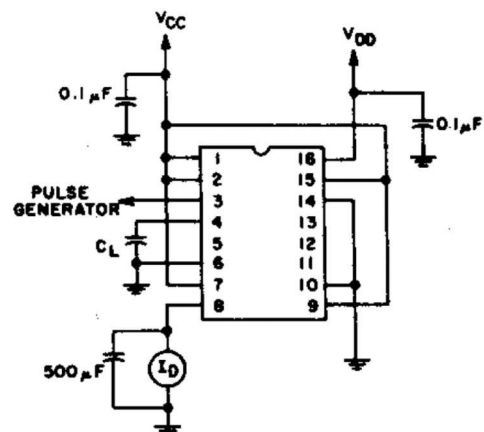
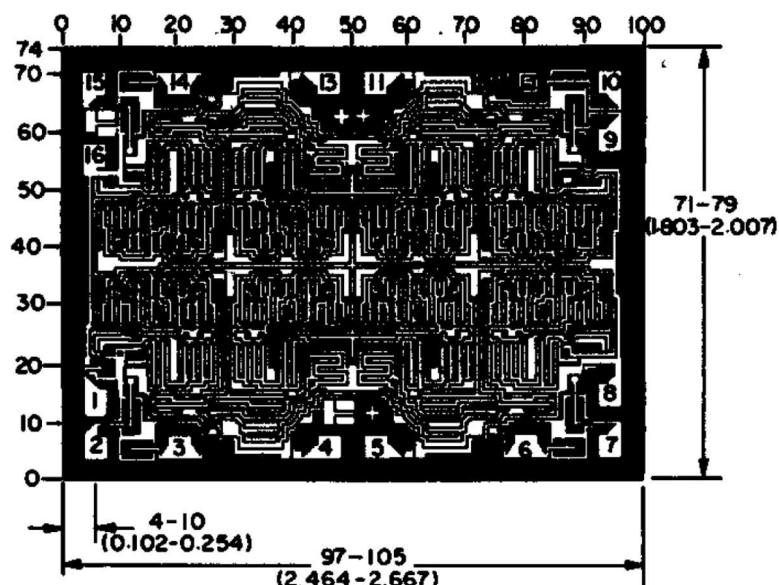


Figure 15. Dynamic Power Dissipation Test Circuit



Note: Dimensions in parentheses are in millimeters and are derived from the basic inch dimensions as indicated. Grid graduations are in mils (10^{-3} inch).

Figure 16. Dimensions and Pad Layout

PACKAGING INFORMATION

Orderable Device	Status ⁽¹⁾	Package Type	Package Drawing	Pins	Package Qty	Eco Plan ⁽²⁾	Lead/Ball Finish	MSL Peak Temp ⁽³⁾
CD40109BQNSRQ1	ACTIVE	SO	NS	16	2000	Green (RoHS & no Sb/Br)	CU NIPDAU	Level-1-260C-UNLIM

⁽¹⁾ The marketing status values are defined as follows:

ACTIVE: Product device recommended for new designs.

LIFEBUY: TI has announced that the device will be discontinued, and a lifetime-buy period is in effect.

NRND: Not recommended for new designs. Device is in production to support existing customers, but TI does not recommend using this part in a new design.

PREVIEW: Device has been announced but is not in production. Samples may or may not be available.

OBSOLETE: TI has discontinued the production of the device.

⁽²⁾ Eco Plan - The planned eco-friendly classification: Pb-Free (RoHS), Pb-Free (RoHS Exempt), or Green (RoHS & no Sb/Br) - please check <http://www.ti.com/productcontent> for the latest availability information and additional product content details.

TBD: The Pb-Free/Green conversion plan has not been defined.

Pb-Free (RoHS): TI's terms "Lead-Free" or "Pb-Free" mean semiconductor products that are compatible with the current RoHS requirements for all 6 substances, including the requirement that lead not exceed 0.1% by weight in homogeneous materials. Where designed to be soldered at high temperatures, TI Pb-Free products are suitable for use in specified lead-free processes.

Pb-Free (RoHS Exempt): This component has a RoHS exemption for either 1) lead-based flip-chip solder bumps used between the die and package, or 2) lead-based die adhesive used between the die and leadframe. The component is otherwise considered Pb-Free (RoHS compatible) as defined above.

Green (RoHS & no Sb/Br): TI defines "Green" to mean Pb-Free (RoHS compatible), and free of Bromine (Br) and Antimony (Sb) based flame retardants (Br or Sb do not exceed 0.1% by weight in homogeneous material)

⁽³⁾ MSL, Peak Temp. -- The Moisture Sensitivity Level rating according to the JEDEC industry standard classifications, and peak solder temperature.

Important Information and Disclaimer: The information provided on this page represents TI's knowledge and belief as of the date that it is provided. TI bases its knowledge and belief on information provided by third parties, and makes no representation or warranty as to the accuracy of such information. Efforts are underway to better integrate information from third parties. TI has taken and continues to take reasonable steps to provide representative and accurate information but may not have conducted destructive testing or chemical analysis on incoming materials and chemicals. TI and TI suppliers consider certain information to be proprietary, and thus CAS numbers and other limited information may not be available for release.

In no event shall TI's liability arising out of such information exceed the total purchase price of the TI part(s) at issue in this document sold by TI to Customer on an annual basis.

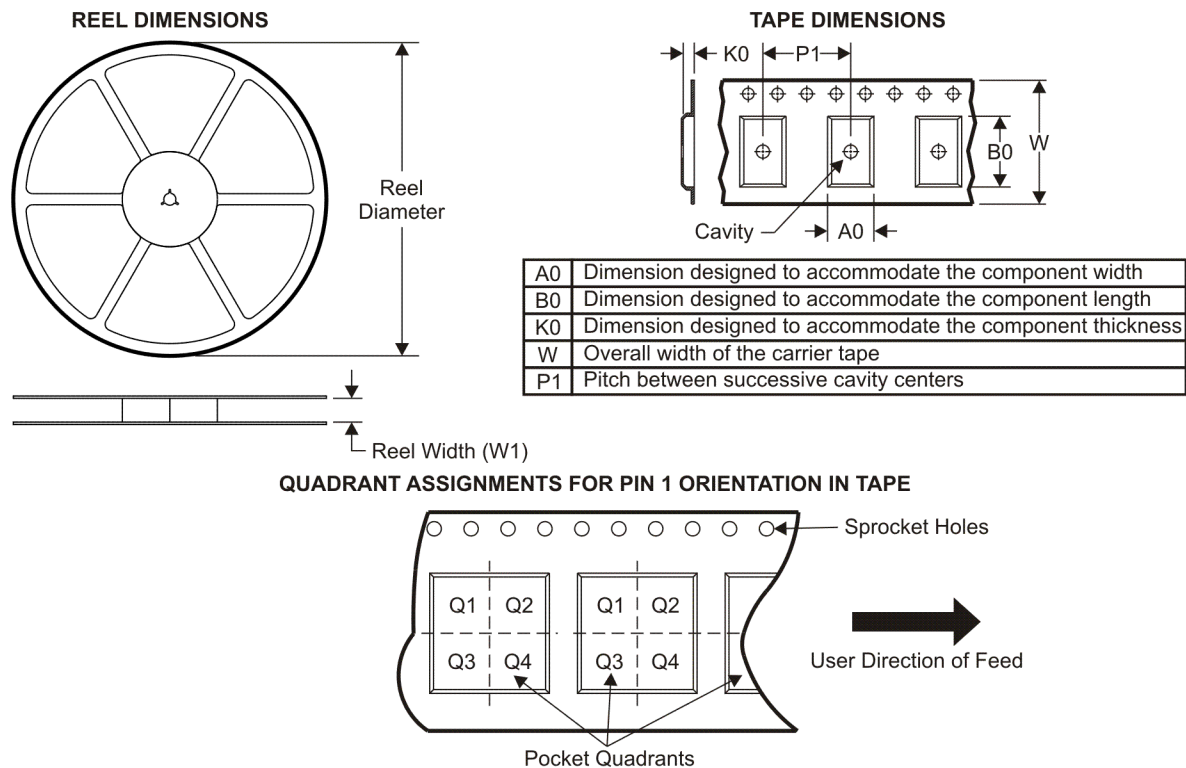
OTHER QUALIFIED VERSIONS OF CD40109B-Q1 :

- Catalog: [CD40109B](#)
- Military: [CD40109B-MIL](#)

NOTE: Qualified Version Definitions:

- Catalog - TI's standard catalog product
- Military - QML certified for Military and Defense Applications

TAPE AND REEL INFORMATION



*All dimensions are nominal

Device	Package Type	Package Drawing	Pins	SPQ	Reel Diameter (mm)	Reel Width W1 (mm)	A0 (mm)	B0 (mm)	K0 (mm)	P1 (mm)	W (mm)	Pin1 Quadrant
CD40109BQNSRQ1	SO	NS	16	2000	330.0	16.4	8.2	10.5	2.5	12.0	16.0	Q1

TAPE AND REEL BOX DIMENSIONS



*All dimensions are nominal

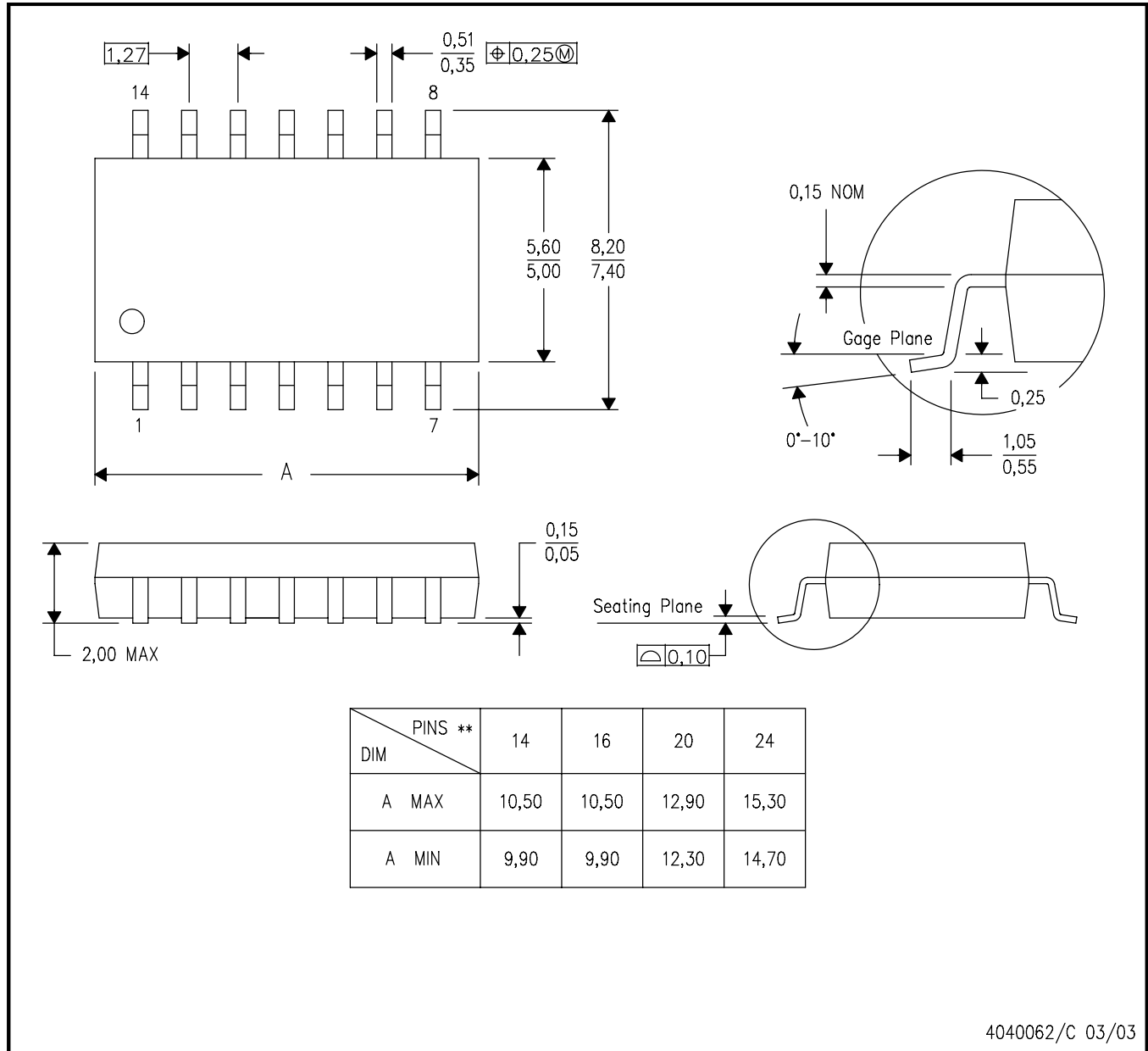
Device	Package Type	Package Drawing	Pins	SPQ	Length (mm)	Width (mm)	Height (mm)
CD40109BQNSRQ1	SO	NS	16	2000	346.0	346.0	33.0

MECHANICAL DATA

NS (R-PDSO-G**)

PLASTIC SMALL-OUTLINE PACKAGE

14-PINS SHOWN



- NOTES:
- A. All linear dimensions are in millimeters.
 - B. This drawing is subject to change without notice.
 - C. Body dimensions do not include mold flash or protrusion, not to exceed 0,15.

IMPORTANT NOTICE

Texas Instruments Incorporated and its subsidiaries (TI) reserve the right to make corrections, modifications, enhancements, improvements, and other changes to its products and services at any time and to discontinue any product or service without notice. Customers should obtain the latest relevant information before placing orders and should verify that such information is current and complete. All products are sold subject to TI's terms and conditions of sale supplied at the time of order acknowledgment.

TI warrants performance of its hardware products to the specifications applicable at the time of sale in accordance with TI's standard warranty. Testing and other quality control techniques are used to the extent TI deems necessary to support this warranty. Except where mandated by government requirements, testing of all parameters of each product is not necessarily performed.

TI assumes no liability for applications assistance or customer product design. Customers are responsible for their products and applications using TI components. To minimize the risks associated with customer products and applications, customers should provide adequate design and operating safeguards.

TI does not warrant or represent that any license, either express or implied, is granted under any TI patent right, copyright, mask work right, or other TI intellectual property right relating to any combination, machine, or process in which TI products or services are used. Information published by TI regarding third-party products or services does not constitute a license from TI to use such products or services or a warranty or endorsement thereof. Use of such information may require a license from a third party under the patents or other intellectual property of the third party, or a license from TI under the patents or other intellectual property of TI.

Reproduction of TI information in TI data books or data sheets is permissible only if reproduction is without alteration and is accompanied by all associated warranties, conditions, limitations, and notices. Reproduction of this information with alteration is an unfair and deceptive business practice. TI is not responsible or liable for such altered documentation. Information of third parties may be subject to additional restrictions.

Resale of TI products or services with statements different from or beyond the parameters stated by TI for that product or service voids all express and any implied warranties for the associated TI product or service and is an unfair and deceptive business practice. TI is not responsible or liable for any such statements.

TI products are not authorized for use in safety-critical applications (such as life support) where a failure of the TI product would reasonably be expected to cause severe personal injury or death, unless officers of the parties have executed an agreement specifically governing such use. Buyers represent that they have all necessary expertise in the safety and regulatory ramifications of their applications, and acknowledge and agree that they are solely responsible for all legal, regulatory and safety-related requirements concerning their products and any use of TI products in such safety-critical applications, notwithstanding any applications-related information or support that may be provided by TI. Further, Buyers must fully indemnify TI and its representatives against any damages arising out of the use of TI products in such safety-critical applications.

TI products are neither designed nor intended for use in military/aerospace applications or environments unless the TI products are specifically designated by TI as military-grade or "enhanced plastic." Only products designated by TI as military-grade meet military specifications. Buyers acknowledge and agree that any such use of TI products which TI has not designated as military-grade is solely at the Buyer's risk, and that they are solely responsible for compliance with all legal and regulatory requirements in connection with such use.

TI products are neither designed nor intended for use in automotive applications or environments unless the specific TI products are designated by TI as compliant with ISO/TS 16949 requirements. Buyers acknowledge and agree that, if they use any non-designated products in automotive applications, TI will not be responsible for any failure to meet such requirements.

Following are URLs where you can obtain information on other Texas Instruments products and application solutions:

Products		Applications	
Amplifiers	amplifier.ti.com	Audio	www.ti.com/audio
Data Converters	dataconverter.ti.com	Automotive	www.ti.com/automotive
DLP® Products	www.dlp.com	Communications and Telecom	www.ti.com/communications
DSP	dsp.ti.com	Computers and Peripherals	www.ti.com/computers
Clocks and Timers	www.ti.com/clocks	Consumer Electronics	www.ti.com/consumer-apps
Interface	interface.ti.com	Energy	www.ti.com/energy
Logic	logic.ti.com	Industrial	www.ti.com/industrial
Power Mgmt	power.ti.com	Medical	www.ti.com/medical
Microcontrollers	microcontroller.ti.com	Security	www.ti.com/security
RFID	www.ti-rfid.com	Space, Avionics & Defense	www.ti.com/space-avionics-defense
RF/IF and ZigBee® Solutions	www.ti.com/lprf	Video and Imaging	www.ti.com/video
		Wireless	www.ti.com/wireless-apps