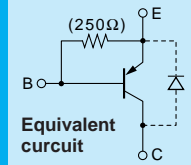


Built-in Diode at C-E

Low $V_{CE(sat)}$

臺灣 2SA1568 供應商

2SA1568



Silicon PNP Epitaxial Planar Transistor (Complement to type 2SC4065)

Application : DC Motor Driver, Chopper Regulator and General Purpose

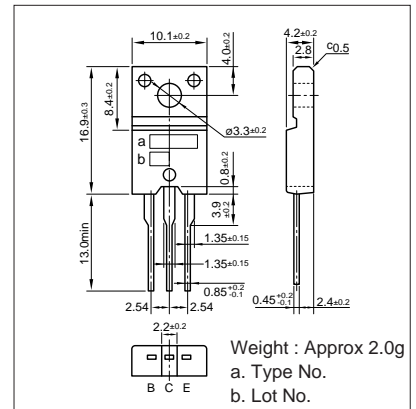
Absolute maximum ratings (Ta=25°C)

Symbol	2SA1568	Unit
V _{CB0}	-60	V
V _{CEO}	-60	V
V _{EB0}	-6	V
I _C	±12	A
I _B	-3	A
P _C	35(T _C =25°C)	W
T _J	150	°C
T _{stg}	-55 to +150	°C

Electrical Characteristics (Ta=25°C)

Symbol	Conditions	2SA1568	Unit
I _{CB0}	V _{CB} =-60V	-100max	μA
I _{EB0}	V _{EB} =-6V	-60max	mA
V _{(BR)CEO}	I _C =-25mA	-60min	V
h _{FE}	V _{CE} =-1V, I _C =-6A	50min	
V _{CE(sat)}	I _C =-6A, I _B =-0.3A	-0.35max	V
V _{FEC}	I _{EO} =-10A	-2.5max	V
f _T	V _{CE} =-12V, I _E =0.5A	40typ	MHz
COB	V _{CB} =-10V, f=1MHz	330typ	pF

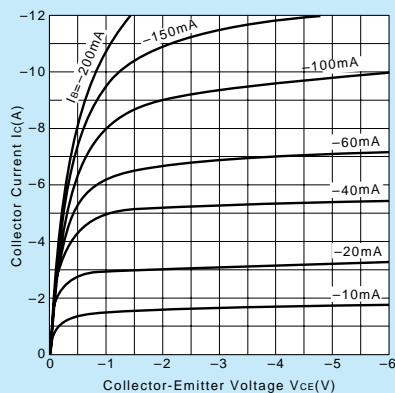
External Dimensions FM20 (TO220F)



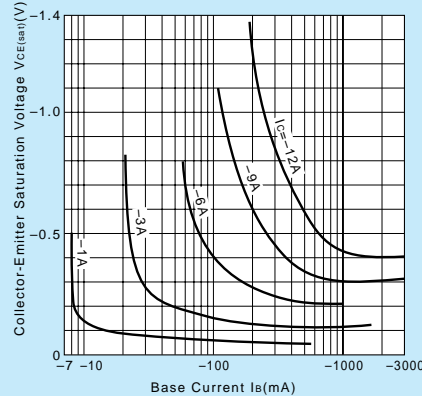
Typical Switching Characteristics (Common Emitter)

V _{CC} (V)	R _L (Ω)	I _C (A)	V _{BB1} (V)	V _{BB2} (V)	I _{B1} (mA)	I _{B2} (mA)	t _{on} (μs)	t _{stg} (μs)	t _f (μs)
-24	4	-6	-10	5	-120	120	0.4typ	0.4typ	0.2typ

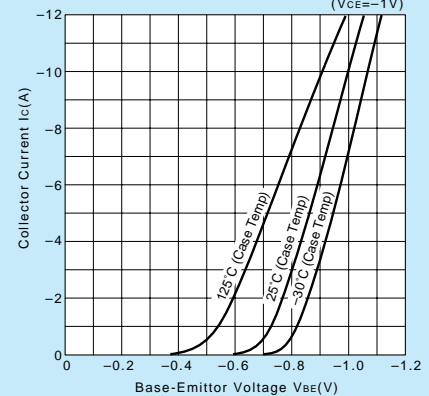
I_C-V_{CE} Characteristics (Typical)



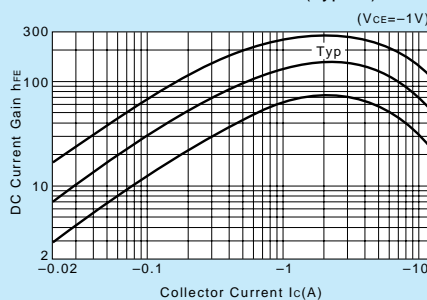
V_{CE(sat)}-I_B Characteristics (Typical)



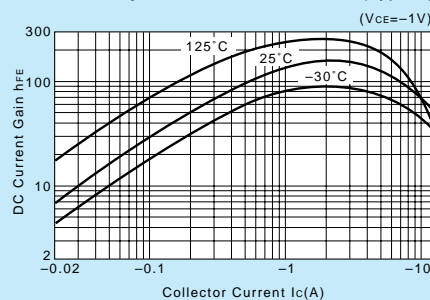
I_C-V_{BE} Temperature Characteristics (Typical)



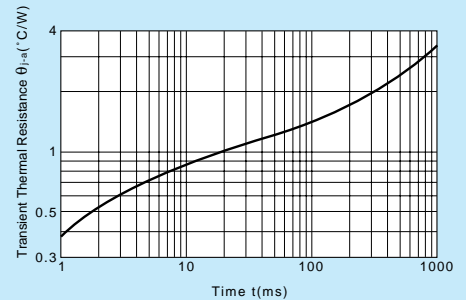
h_{FE}-I_C Characteristics (Typical)



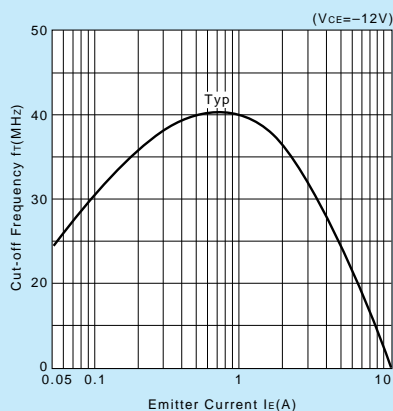
h_{FE}-I_C Temperature Characteristics (Typical)



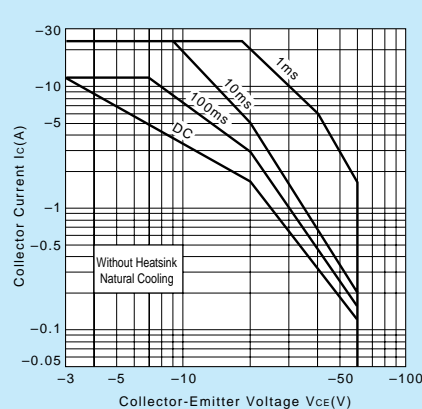
θ_{j-a}-t Characteristics



f_T-I_E Characteristics (Typical)



Safe Operating Area (Single Pulse)



P_C-T_a Derating

