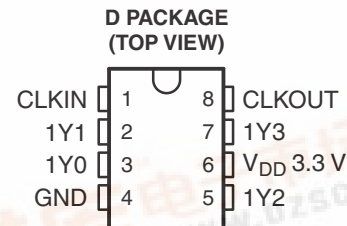


## 3.3-V CLOCK PHASE-LOCKED LOOP CLOCK DRIVER

### FEATURES

- Qualified for Automotive Applications
- Phase-Locked Loop Clock Driver for Synchronous DRAM and General-Purpose Applications
- Spread-Spectrum Clock Compatible
- Operating Frequency: 24 MHz to 200 MHz
- Low Jitter (Cycle-to-Cycle): <150 ps Over the Range 66 MHz to 200 MHz
- Distributes One Clock Input to One Bank of Five Outputs (CLKOUT Is Used to Tune the Input-Output Delay)
- Three-States Outputs When There Is No Input Clock
- Operates From Single 3.3-V Supply
- Available in 8-Pin SOIC Package
- Consumes Less Than 100  $\mu$ A (Typically) in Power Down Mode
- Internal Feedback Loop Is Used to Synchronize the Outputs to the Input Clock
- 25- $\Omega$  On-Chip Series Damping Resistors
- Integrated RC PLL Loop Filter Eliminates the Need for External Components



### DESCRIPTION

The CDCVF2505 is a high-performance, low-skew, low-jitter, phase-lock loop (PLL) clock driver. It uses a PLL to precisely align, in both frequency and phase, the output clocks (1Y[0–3] and CLKOUT) to the input clock signal (CLKIN). The CDCVF2505 operates at 3.3 V. It also provides integrated series-damping resistors that make it ideal for driving point-to-point loads.

One bank of five outputs provides low-skew, low-jitter copies of CLKIN. Output duty cycles are adjusted to 50 percent, independent of duty cycle at CLKIN. The device automatically goes in power-down mode when no input signal is applied to CLKIN.

Unlike many products containing PLLs, the CDCVF2505 does not require an external RC network. The loop filter for the PLLs is included on-chip, minimizing component count, space, and cost.

Because it is based on the PLL circuitry, the CDCVF2505 requires a stabilization time to achieve phase lock of the feedback signal to the reference signal. This stabilization is required following power up and application of a fixed-frequency, fixed-phase signal at CLKIN, and following any changes to the PLL reference.

The CDCVF2505 is characterized for operation from –40°C to 85°C.

### ORDERING INFORMATION<sup>(1)</sup>

| T <sub>A</sub> | PACKAGE <sup>(2)</sup> |              | ORDERABLE PART NUMBER | TOP-SIDE MARKING |
|----------------|------------------------|--------------|-----------------------|------------------|
| –40°C to 85°C  | SOIC – D               | Reel of 2500 | CDCVF2505IDRQ1        | CKV05Q           |

- (1) For the most current package and ordering information, see the Package Option Addendum at the end of this document, or see the TI web site at [www.ti.com](http://www.ti.com).
- (2) Package drawings, thermal data, and symbolization are available at [www.ti.com/packaging](http://www.ti.com/packaging).



Please be aware that an important notice concerning availability, standard warranty, and use in critical applications of Texas Instruments semiconductor products and disclaimers thereto appears at the end of this data sheet.

PRODUCTION DATA information is current as of publication date. Products conform to specifications per the terms of the Texas Instruments standard warranty. Production processing does not necessarily include testing of all parameters.

Copyright © 2008, Texas Instruments Incorporated

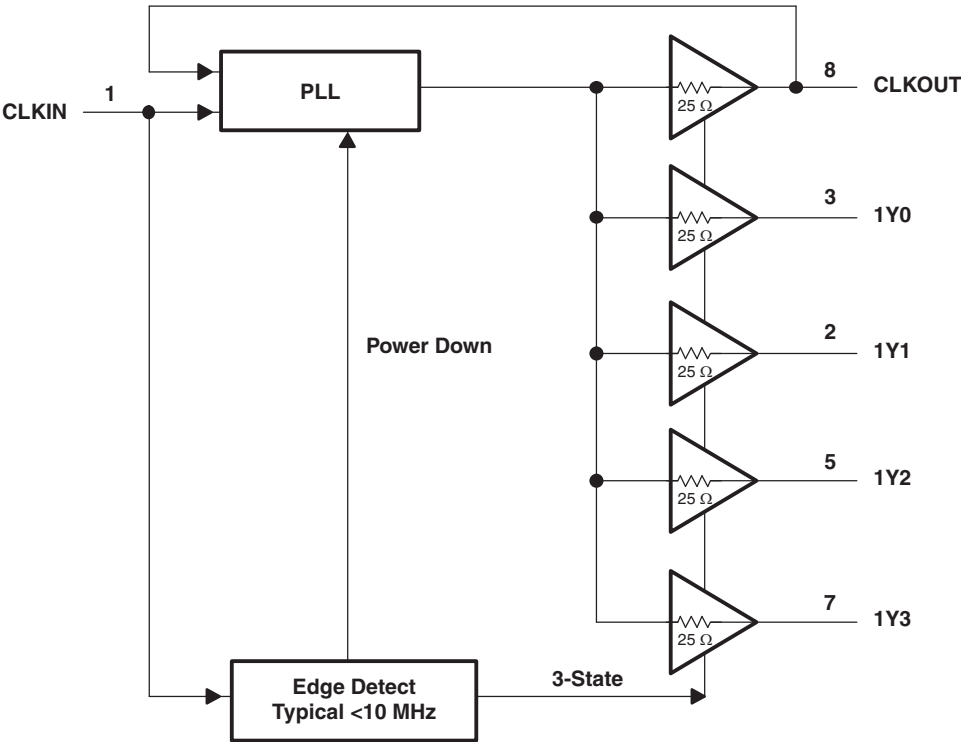


FUNCTION TABLE

| INPUT                  | OUTPUTS |        |
|------------------------|---------|--------|
| CLKIN                  | 1Y[0-3] | CLKOUT |
| L                      | L       | L      |
| H                      | H       | H      |
| <10 MHz <sup>(1)</sup> | Z       | Z      |

- (1) Below 2 MHz (typical) the device goes into power-down mode, during which the PLL is turned off and the outputs enter into Hi-Z mode. If a >10-MHz signal is applied at CLKIN, the PLL turns on, reacquires lock, and stabilizes after approximately 100  $\mu$ s. The outputs are then enabled.

FUNCTIONAL BLOCK DIAGRAM



TERMINAL FUNCTIONS

| NAME                 | NO. | I/O   | DESCRIPTION   |
|----------------------|-----|-------|---|
| 1Y0                  | 3   | O     | Clock outputs. These outputs are low-skew copies of CLKIN. Each output has an integrated 25- $\Omega$ series damping resistor.  |
| 1Y1                  | 2   |       |   |
| 1Y2                  | 5   |       |   |
| 1Y3                  | 7   |       |   |
| CLKIN                | 1   | I     | Clock input. CLKIN provides the clock signal to be distributed by the CDCVF2505 clock driver. CLKIN is used to provide the reference signal to the integrated PLL that generates the clock output signals. CLKIN must have a fixed frequency and fixed phase for the PLL to obtain phase lock. Once the circuit is powered up and a valid signal is applied, a stabilization time (100 $\mu$ s) is required for the PLL to phase lock the feedback signal to CLKIN. |
| CLKOUT               | 8   | O     | Feedback output. CLKOUT completes the internal feedback loop of the PLL. This connection is made inside the chip and an external feedback loop should NOT be connected. CLKOUT can be loaded with a capacitor to achieve zero delay between CLKIN and the Y outputs.  |
| GND                  | 4   | Power | Ground  |
| V <sub>DD</sub> 3.3V | 6   | Power | 3.3-V supply  |

## ABSOLUTE MAXIMUM RATINGS<sup>(1)</sup>

over operating free-air temperature range (unless otherwise noted)

|               |  |                             |                            |
|---------------|--|-----------------------------|----------------------------|
| $V_{DD}$      | Supply voltage range                     |                             | –0.5 V to 4.3 V            |
| $V_I$         | Input voltage range <sup>(2)(3)</sup>    |                             | –0.5 V to $V_{DD} + 0.5$ V |
| $V_O$         | Output voltage range <sup>(2)(3)</sup>   |                             | –0.5 V to $V_{DD} + 0.5$ V |
| $I_{IK}$      | Input clamp current                      | $V_I < 0$ or $V_I > V_{DD}$ | ±50 mA                     |
| $I_{OK}$      | Output clamp current                     | $V_O < 0$ or $V_O > V_{DD}$ | ±50 mA                     |
| $I_O$         | Continuous total output current          | $V_O = 0$ to $V_{DD}$       | ±50 mA                     |
| $\theta_{JA}$ | Package thermal impedance <sup>(4)</sup> |                             | 97.1°C/W                   |
| $T_{stg}$     | Storage temperature range                |                             | –65°C to 150°C             |

- (1) Stresses beyond those listed under *absolute maximum ratings* may cause permanent damage to the device. These are stress ratings only, and functional operation of the device at these or any other conditions beyond those indicated under *recommended operating conditions* is not implied. Exposure to absolute-maximum-rated conditions for extended periods may affect device reliability.
- (2) The input and output negative-voltage ratings may be exceeded if the input and output clamp-current ratings are observed.
- (3) This value is limited to 4.3 V maximum.
- (4) The package thermal impedance is calculated in accordance with JESD 51-7.

## ELECTROSTATIC DISCHARGE INFORMATION

| ESD MODEL |                      | LIMIT  |
|-----------|----------------------|--------|
| HBM       | Human-Body Model     | 2000 V |
| MM        | Machine Model        | 300 V  |
| CDM       | Charged-Device Model | 1000 V |

## RECOMMENDED OPERATING CONDITIONS

|          | MIN                 | NOM | MAX      | UNIT |
|----------|---------------------|-----|----------|------|
| $V_{DD}$ | 3                   | 3.3 | 3.6      | V    |
| $V_{IH}$ | $0.7 \times V_{DD}$ |     |          | V    |
| $V_{IL}$ | $0.3 \times V_{DD}$ |     |          | V    |
| $V_I$    | 0                   |     | $V_{DD}$ | V    |
| $I_{OH}$ |                     |     | –12      | mA   |
| $I_{OL}$ |                     |     | 12       | mA   |
| $T_A$    | –40                 |     | 85       | °C   |

## TIMING REQUIREMENTS

over recommended ranges of supply voltage and operating free-air temperature (unless otherwise noted)

|                                   | MIN | NOM | MAX | UNIT |
|-----------------------------------|-----|-----|-----|------|
| $f_{clk}$                         | 24  |     | 200 | MHz  |
| Input clock duty cycle            | 30  |     | 85  | %    |
|                                   | 40  | 50  | 60  |      |
| Stabilization time <sup>(2)</sup> |     |     | 100 | μs   |

- (1) Specified by design.
- (2) Time required for the integrated PLL circuit to obtain phase lock of its feedback signal to its reference signal. For phase lock to be obtained, a fixed-frequency fixed-phase reference signal must be present at CLKIN. Until phase lock is obtained, the specifications for propagation delay, skew, and jitter parameters given in the switching characteristics table are not applicable. This parameter does not apply for input modulation under SSC application.

## ELECTRICAL CHARACTERISTICS

over operating free-air temperature range (unless otherwise noted)

| PARAMETER       |                           | TEST CONDITIONS                         | V <sub>DD</sub> | MIN                   | TYP <sup>(1)</sup> | MAX  | UNIT |
|-----------------|---------------------------|---|-----------------|-----------------------|--------------------|------|------|
| V <sub>IK</sub> | Input voltage             | I <sub>I</sub> = -18 mA                 | 3 V             |                       |                    | -1.2 | V    |
| V <sub>OH</sub> | High-level output voltage | I <sub>OH</sub> = -100 µA               | MIN to MAX      | V <sub>DD</sub> - 0.2 |                    |      | V    |
|                 |                           | I <sub>OH</sub> = -12 mA                | 3 V             | 2.1                   |                    |      |      |
|                 |                           | I <sub>OH</sub> = -6 mA                 | 3 V             | 2.4                   |                    |      |      |
| V <sub>OL</sub> | Low-level output voltage  | I <sub>OL</sub> = 100 µA                | MIN to MAX      |                       |                    | 0.2  | V    |
|                 |                           | I <sub>OL</sub> = 12 mA                 | 3 V             |                       |                    | 0.8  |      |
|                 |                           | I <sub>OL</sub> = 6 mA                  | 3 V             |                       |                    | 0.55 |      |
| I <sub>OH</sub> | High-level output current | V <sub>O</sub> = 1 V                    | 3 V             | -27                   |                    |      | mA   |
|                 |                           | V <sub>O</sub> = 1.65 V                 | 3.3 V           | -36                   |                    |      |      |
| I <sub>OL</sub> | Low-level output current  | V <sub>O</sub> = 2 V                    | 3 V             | 27                    |                    |      | mA   |
|                 |                           | V <sub>O</sub> = 1.65 V                 | 3.3 V           | 40                    |                    |      |      |
| I <sub>I</sub>  | Input current             | V <sub>I</sub> = 0 V or V <sub>DD</sub> |                 |                       |                    | ±5   | µA   |
| C <sub>i</sub>  | Input capacitance         | V <sub>I</sub> = 0 V or V <sub>DD</sub> | 3.3 V           | 4.2                   |                    |      | pF   |
| C <sub>o</sub>  | Output capacitance        | Y <sub>n</sub>                          | 3.3 V           | 2.8                   |                    |      | pF   |
|                 |                           | CLKOUT                                  |                 | 5.2                   |                    |      |      |

(1) All typical values are at nominal V<sub>DD</sub> and T<sub>A</sub> = 25°C.

## SWITCHING CHARACTERISTICS<sup>(1)</sup>

over recommended ranges of supply voltage and operating free-air temperature, C<sub>L</sub> = 25 pF, V<sub>DD</sub> = 3.3 V ± 0.3 V (unless otherwise noted)

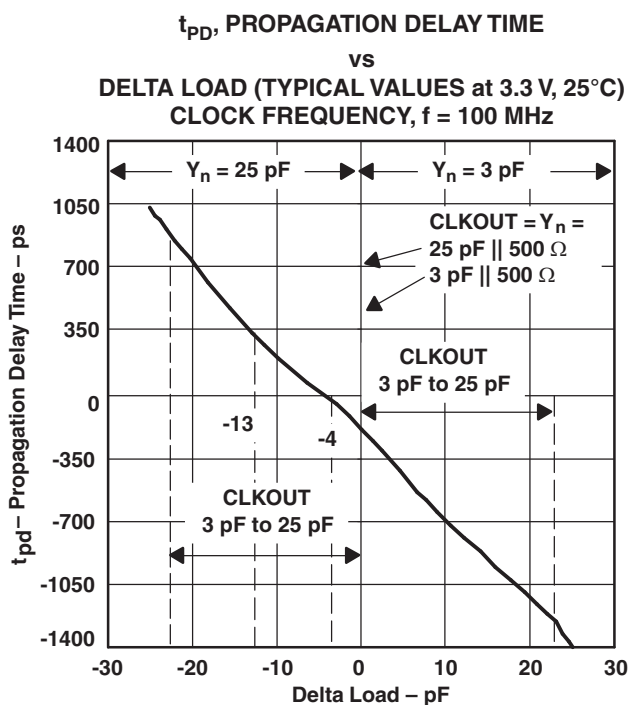
| PARAMETER              |   | TEST CONDITIONS                                 | MIN  | TYP <sup>(2)</sup> | MAX | UNIT |
|------------------------|---|---|------|--------------------|-----|------|
| t <sub>pd</sub>        | Propagation delay, normalized (see <a href="#">Figure 1</a> ) | CLKIN to Y <sub>n</sub> , f = 66 MHz to 200 MHz | -150 |                    | 150 | ps   |
| t <sub>sk(o)</sub>     | Output skew <sup>(3)</sup>                                    | Y <sub>n</sub> to Y <sub>n</sub>                |      |                    | 150 | ps   |
| t <sub>c(jit_cc)</sub> | Jitter (cycle to cycle) (see <a href="#">Figure 5</a> )       | f = 66 MHz to 200 MHz                           |      | 70                 | 150 | ps   |
|                        |   | f = 24 MHz to 50 MHz                            |      | 200                | 400 |      |
| odc                    | Output duty cycle (see <a href="#">Figure 4</a> )             | f = 24 MHz to 200 MHz at 50% V <sub>DD</sub>    | 45   |                    | 55  | %    |
| t <sub>r</sub>         | Rise time   | V <sub>O</sub> = 0.4 V to 2 V                   | 0.5  |                    | 2   | ns   |
| t <sub>f</sub>         | Fall time   | V <sub>O</sub> = 2 V to 0.4 V                   | 0.5  |                    | 2   | ns   |

(1) Not production tested

(2) All typical values are at nominal V<sub>DD</sub> and T<sub>A</sub> = 25°C.

(3) The t<sub>sk(o)</sub> specification is only valid for equal loading of all outputs.

## TYPICAL CHARACTERISTICS



NOTE: Delta Load = CLKOUT Load - Y<sub>n</sub> Load

Figure 1.

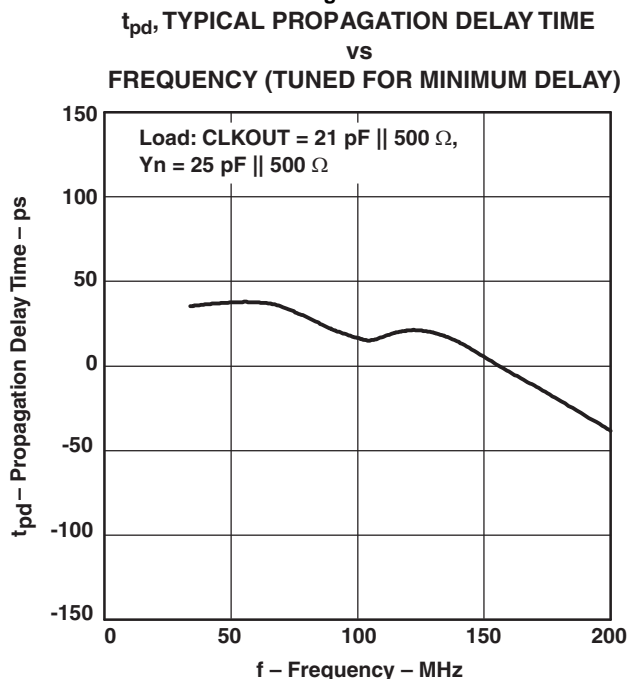


Figure 3.

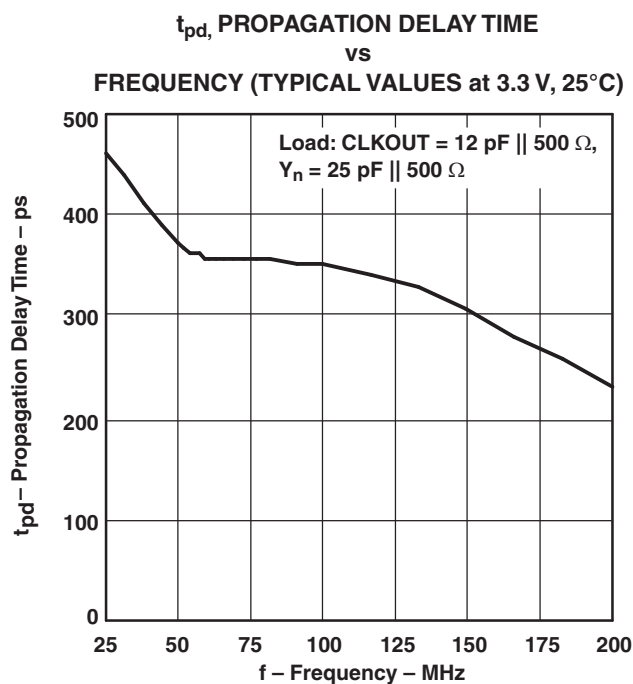


Figure 2.  
DUTY CYCLE  
vs  
FREQUENCY

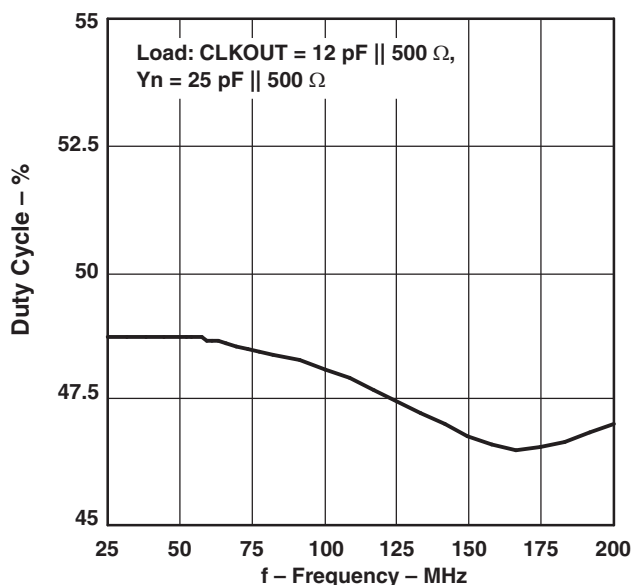


Figure 4.

TYPICAL CHARACTERISTICS (continued)

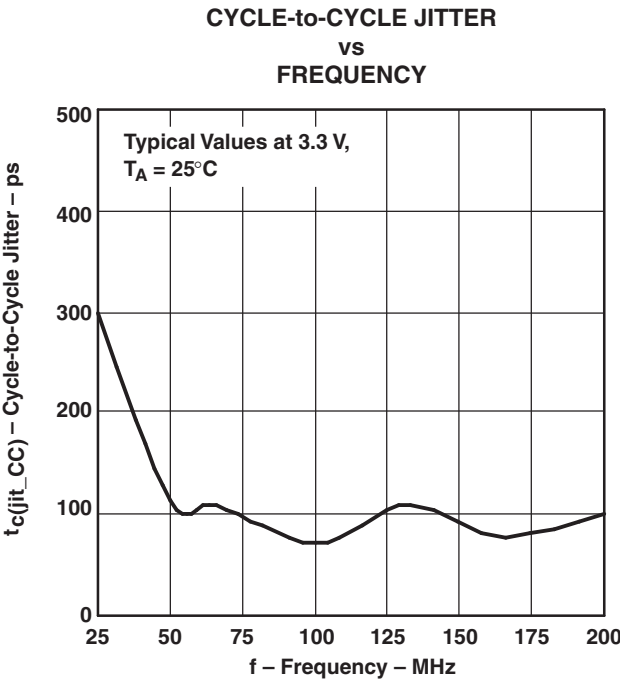


Figure 5.

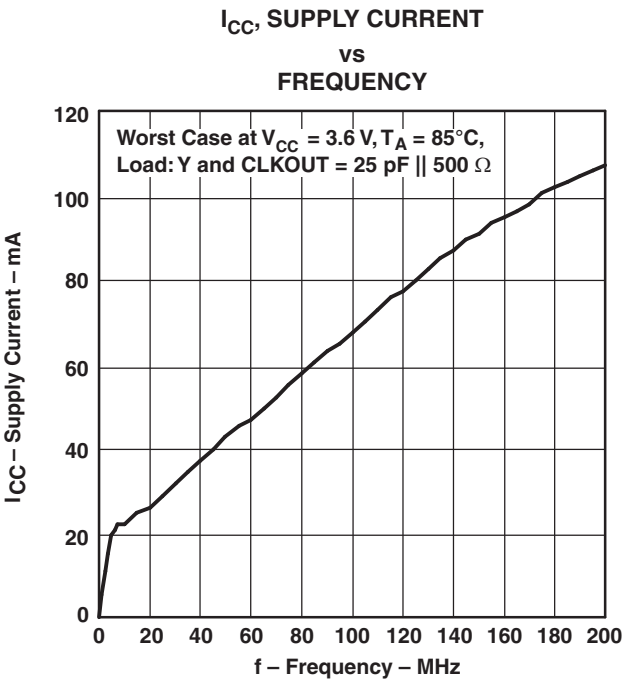


Figure 6.

## PARAMETER MEASUREMENT INFORMATION

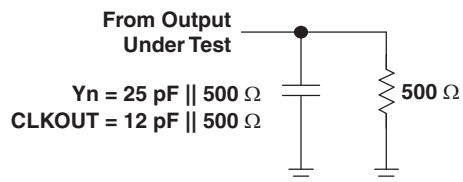


Figure 7. Test Load Circuit

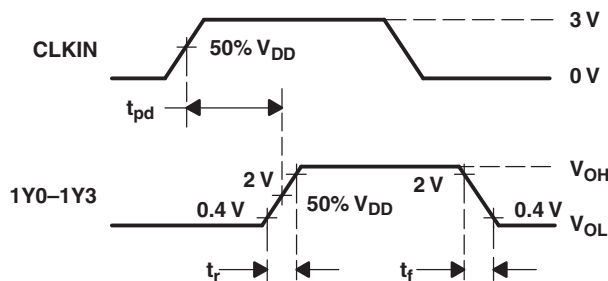


Figure 8. Voltage Threshold for Measurements, Propagation Delay ( $t_{pd}$ )

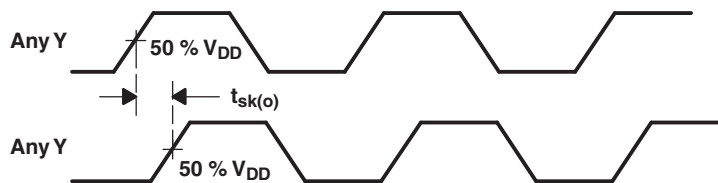


Figure 9. Output Skew

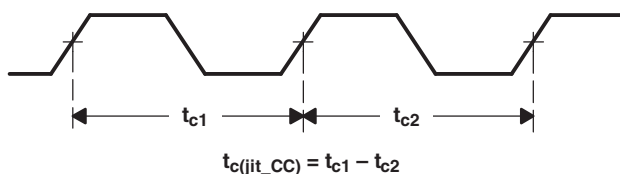


Figure 10. Cycle-to-Cycle Jitter

**PACKAGING INFORMATION**

| Orderable Device | Status <sup>(1)</sup> | Package Type | Package Drawing | Pins | Package Qty | Eco Plan <sup>(2)</sup> | Lead/Ball Finish | MSL Peak Temp <sup>(3)</sup> |
|------------------|-----------------------|--------------|-----------------|------|-------------|-------------------------|------------------|------------------------------|
| CDCVF2505IDRQ1   | ACTIVE                | SOIC         | D               | 8    | 2500        | Green (RoHS & no Sb/Br) | CU NIPDAU        | Level-1-260C-UNLIM           |

<sup>(1)</sup> The marketing status values are defined as follows:

**ACTIVE:** Product device recommended for new designs.

**LIFEBUY:** TI has announced that the device will be discontinued, and a lifetime-buy period is in effect.

**NRND:** Not recommended for new designs. Device is in production to support existing customers, but TI does not recommend using this part in a new design.

**PREVIEW:** Device has been announced but is not in production. Samples may or may not be available.

**OBSOLETE:** TI has discontinued the production of the device.

<sup>(2)</sup> Eco Plan - The planned eco-friendly classification: Pb-Free (RoHS), Pb-Free (RoHS Exempt), or Green (RoHS & no Sb/Br) - please check <http://www.ti.com/productcontent> for the latest availability information and additional product content details.

**TBD:** The Pb-Free/Green conversion plan has not been defined.

**Pb-Free (RoHS):** TI's terms "Lead-Free" or "Pb-Free" mean semiconductor products that are compatible with the current RoHS requirements for all 6 substances, including the requirement that lead not exceed 0.1% by weight in homogeneous materials. Where designed to be soldered at high temperatures, TI Pb-Free products are suitable for use in specified lead-free processes.

**Pb-Free (RoHS Exempt):** This component has a RoHS exemption for either 1) lead-based flip-chip solder bumps used between the die and package, or 2) lead-based die adhesive used between the die and leadframe. The component is otherwise considered Pb-Free (RoHS compatible) as defined above.

**Green (RoHS & no Sb/Br):** TI defines "Green" to mean Pb-Free (RoHS compatible), and free of Bromine (Br) and Antimony (Sb) based flame retardants (Br or Sb do not exceed 0.1% by weight in homogeneous material)

<sup>(3)</sup> MSL, Peak Temp. -- The Moisture Sensitivity Level rating according to the JEDEC industry standard classifications, and peak solder temperature.

**Important Information and Disclaimer:** The information provided on this page represents TI's knowledge and belief as of the date that it is provided. TI bases its knowledge and belief on information provided by third parties, and makes no representation or warranty as to the accuracy of such information. Efforts are underway to better integrate information from third parties. TI has taken and continues to take reasonable steps to provide representative and accurate information but may not have conducted destructive testing or chemical analysis on incoming materials and chemicals. TI and TI suppliers consider certain information to be proprietary, and thus CAS numbers and other limited information may not be available for release.

In no event shall TI's liability arising out of such information exceed the total purchase price of the TI part(s) at issue in this document sold by TI to Customer on an annual basis.

**OTHER QUALIFIED VERSIONS OF CDCVF2505-Q1 :**

- Catalog: [CDCVF2505](#)

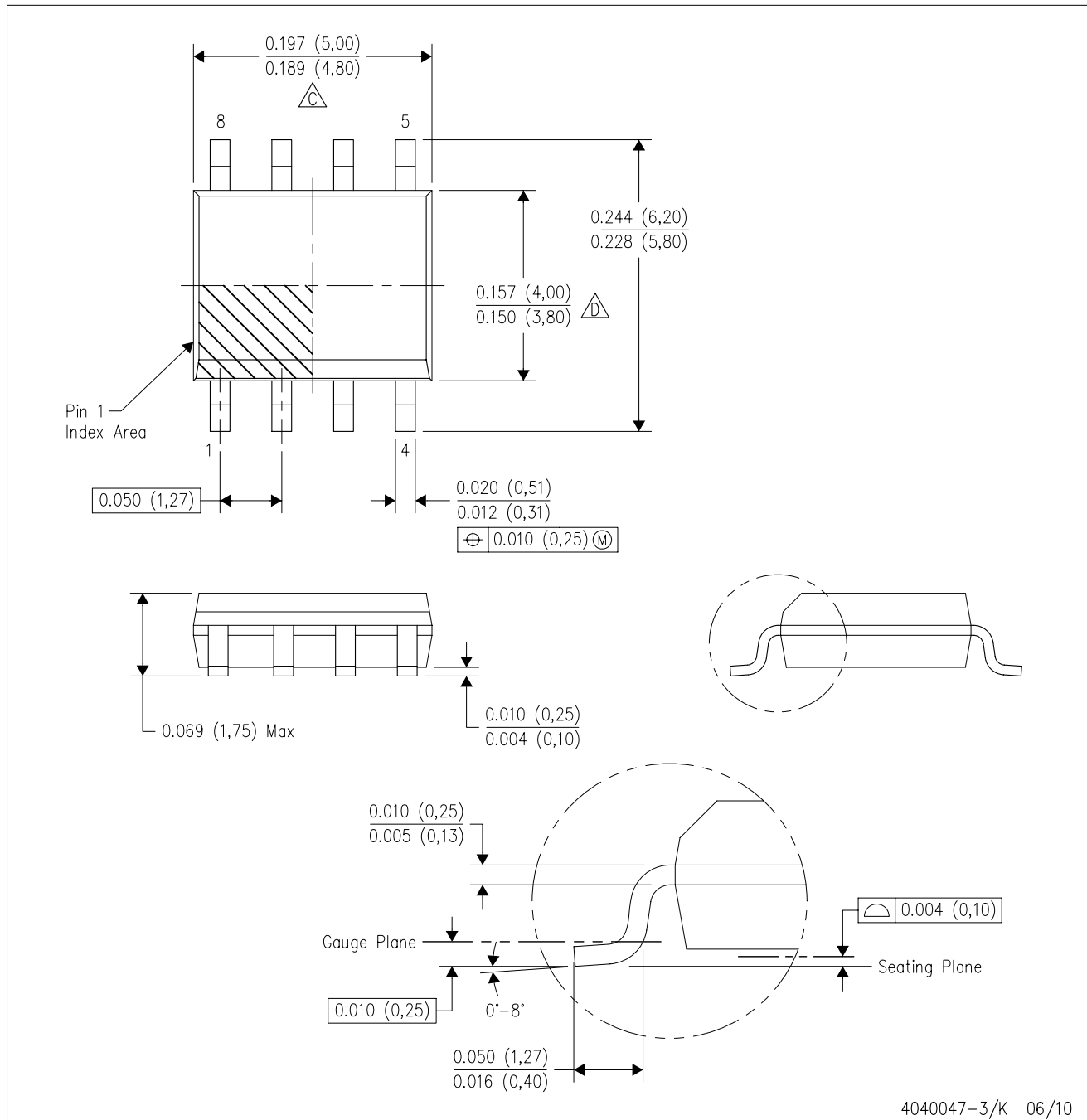
NOTE: Qualified Version Definitions:

- Catalog - TI's standard catalog product



D (R-PDSO-G8)

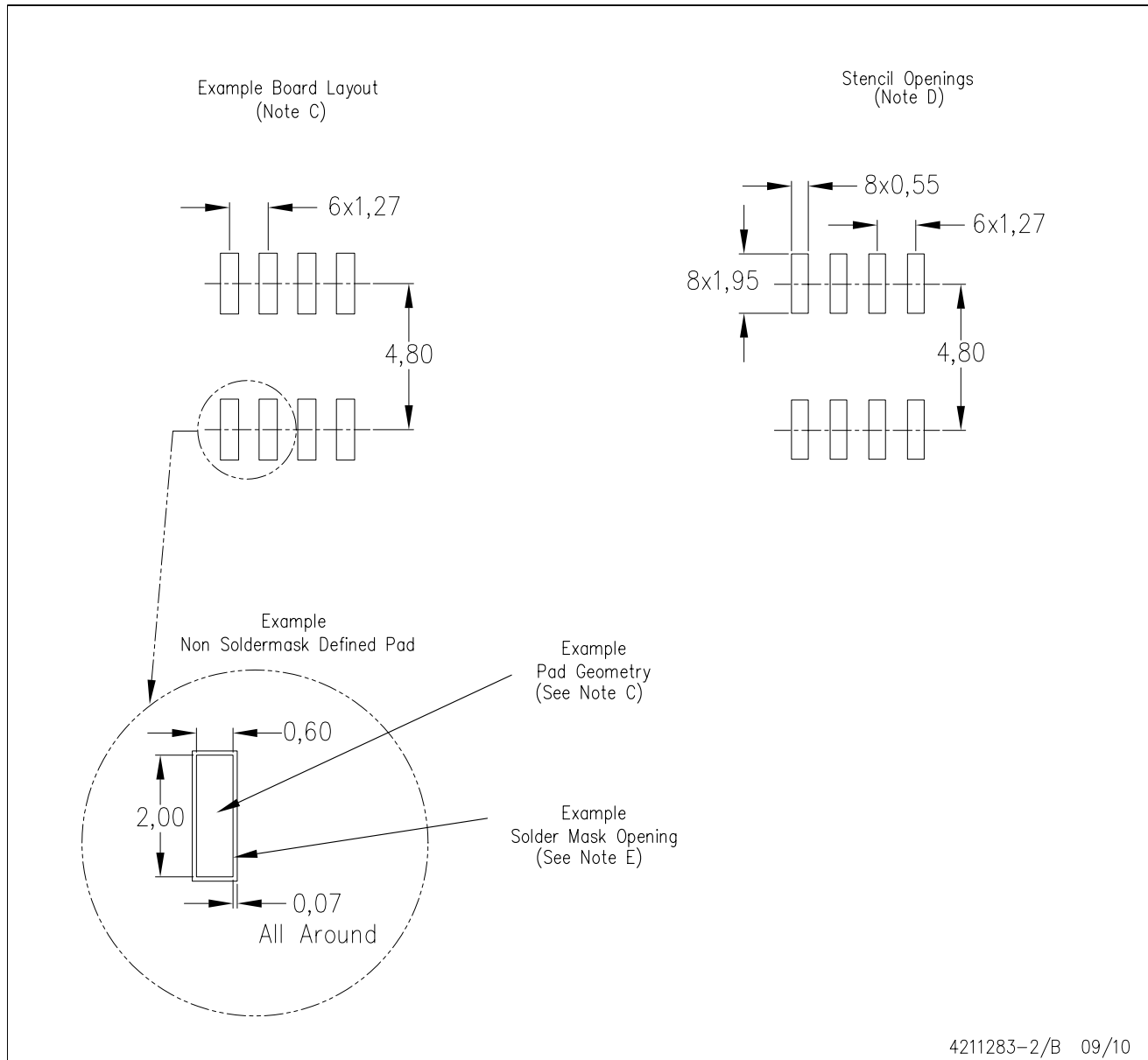
PLASTIC SMALL-OUTLINE PACKAGE



- NOTES:
- A. All linear dimensions are in inches (millimeters).
  - B. This drawing is subject to change without notice.
  - C. Body length does not include mold flash, protrusions, or gate burrs. Mold flash, protrusions, or gate burrs shall not exceed .006 (0,15) per end.
  - D. Body width does not include interlead flash. Interlead flash shall not exceed .017 (0,43) per side.
  - E. Reference JEDEC MS-012 variation AA.

D (R-PDSO-G8)

PLASTIC SMALL OUTLINE



- NOTES:
- A. All linear dimensions are in millimeters.
  - B. This drawing is subject to change without notice.
  - C. Publication IPC-7351 is recommended for alternate designs.
  - D. Laser cutting apertures with trapezoidal walls and also rounding corners will offer better paste release. Customers should contact their board assembly site for stencil design recommendations. Refer to IPC-7525 for other stencil recommendations.
  - E. Customers should contact their board fabrication site for solder mask tolerances between and around signal pads.

## IMPORTANT NOTICE

Texas Instruments Incorporated and its subsidiaries (TI) reserve the right to make corrections, modifications, enhancements, improvements, and other changes to its products and services at any time and to discontinue any product or service without notice. Customers should obtain the latest relevant information before placing orders and should verify that such information is current and complete. All products are sold subject to TI's terms and conditions of sale supplied at the time of order acknowledgment.

TI warrants performance of its hardware products to the specifications applicable at the time of sale in accordance with TI's standard warranty. Testing and other quality control techniques are used to the extent TI deems necessary to support this warranty. Except where mandated by government requirements, testing of all parameters of each product is not necessarily performed.

TI assumes no liability for applications assistance or customer product design. Customers are responsible for their products and applications using TI components. To minimize the risks associated with customer products and applications, customers should provide adequate design and operating safeguards.

TI does not warrant or represent that any license, either express or implied, is granted under any TI patent right, copyright, mask work right, or other TI intellectual property right relating to any combination, machine, or process in which TI products or services are used. Information published by TI regarding third-party products or services does not constitute a license from TI to use such products or services or a warranty or endorsement thereof. Use of such information may require a license from a third party under the patents or other intellectual property of the third party, or a license from TI under the patents or other intellectual property of TI.

Reproduction of TI information in TI data books or data sheets is permissible only if reproduction is without alteration and is accompanied by all associated warranties, conditions, limitations, and notices. Reproduction of this information with alteration is an unfair and deceptive business practice. TI is not responsible or liable for such altered documentation. Information of third parties may be subject to additional restrictions.

Resale of TI products or services with statements different from or beyond the parameters stated by TI for that product or service voids all express and any implied warranties for the associated TI product or service and is an unfair and deceptive business practice. TI is not responsible or liable for any such statements.

TI products are not authorized for use in safety-critical applications (such as life support) where a failure of the TI product would reasonably be expected to cause severe personal injury or death, unless officers of the parties have executed an agreement specifically governing such use. Buyers represent that they have all necessary expertise in the safety and regulatory ramifications of their applications, and acknowledge and agree that they are solely responsible for all legal, regulatory and safety-related requirements concerning their products and any use of TI products in such safety-critical applications, notwithstanding any applications-related information or support that may be provided by TI. Further, Buyers must fully indemnify TI and its representatives against any damages arising out of the use of TI products in such safety-critical applications.

TI products are neither designed nor intended for use in military/aerospace applications or environments unless the TI products are specifically designated by TI as military-grade or "enhanced plastic." Only products designated by TI as military-grade meet military specifications. Buyers acknowledge and agree that any such use of TI products which TI has not designated as military-grade is solely at the Buyer's risk, and that they are solely responsible for compliance with all legal and regulatory requirements in connection with such use.

TI products are neither designed nor intended for use in automotive applications or environments unless the specific TI products are designated by TI as compliant with ISO/TS 16949 requirements. Buyers acknowledge and agree that, if they use any non-designated products in automotive applications, TI will not be responsible for any failure to meet such requirements.

Following are URLs where you can obtain information on other Texas Instruments products and application solutions:

| Products                    |  | Applications               |  |
|-----------------------------|--|----------------------------|--|
| Amplifiers                  | <a href="http://amplifier.ti.com">amplifier.ti.com</a>             | Audio                      | <a href="http://www.ti.com/audio">www.ti.com/audio</a>                                   |
| Data Converters             | <a href="http://dataconverter.ti.com">dataconverter.ti.com</a>     | Automotive                 | <a href="http://www.ti.com/automotive">www.ti.com/automotive</a>                         |
| DLP® Products               | <a href="http://www.dlp.com">www.dlp.com</a>                       | Communications and Telecom | <a href="http://www.ti.com/communications">www.ti.com/communications</a>                 |
| DSP                         | <a href="http://dsp.ti.com">dsp.ti.com</a>                         | Computers and Peripherals  | <a href="http://www.ti.com/computers">www.ti.com/computers</a>                           |
| Clocks and Timers           | <a href="http://www.ti.com/clocks">www.ti.com/clocks</a>           | Consumer Electronics       | <a href="http://www.ti.com/consumer-apps">www.ti.com/consumer-apps</a>                   |
| Interface                   | <a href="http://interface.ti.com">interface.ti.com</a>             | Energy                     | <a href="http://www.ti.com/energy">www.ti.com/energy</a>                                 |
| Logic                       | <a href="http://logic.ti.com">logic.ti.com</a>                     | Industrial                 | <a href="http://www.ti.com/industrial">www.ti.com/industrial</a>                         |
| Power Mgmt                  | <a href="http://power.ti.com">power.ti.com</a>                     | Medical                    | <a href="http://www.ti.com/medical">www.ti.com/medical</a>                               |
| Microcontrollers            | <a href="http://microcontroller.ti.com">microcontroller.ti.com</a> | Security                   | <a href="http://www.ti.com/security">www.ti.com/security</a>                             |
| RFID                        | <a href="http://www.ti-rfid.com">www.ti-rfid.com</a>               | Space, Avionics & Defense  | <a href="http://www.ti.com/space-avionics-defense">www.ti.com/space-avionics-defense</a> |
| RF/IF and ZigBee® Solutions | <a href="http://www.ti.com/lprf">www.ti.com/lprf</a>               | Video and Imaging          | <a href="http://www.ti.com/video">www.ti.com/video</a>                                   |
|                             |  | Wireless                   | <a href="http://www.ti.com/wireless-apps">www.ti.com/wireless-apps</a>                   |