

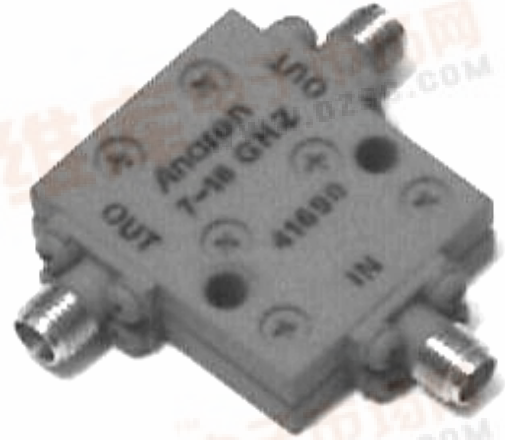
### Power Dividers 2-Way

#### Applications

- Phased Arrays
- Antenna Feed Networks
- Image Reject Mixers
- Test Systems
- LO Power Dividers

#### Features

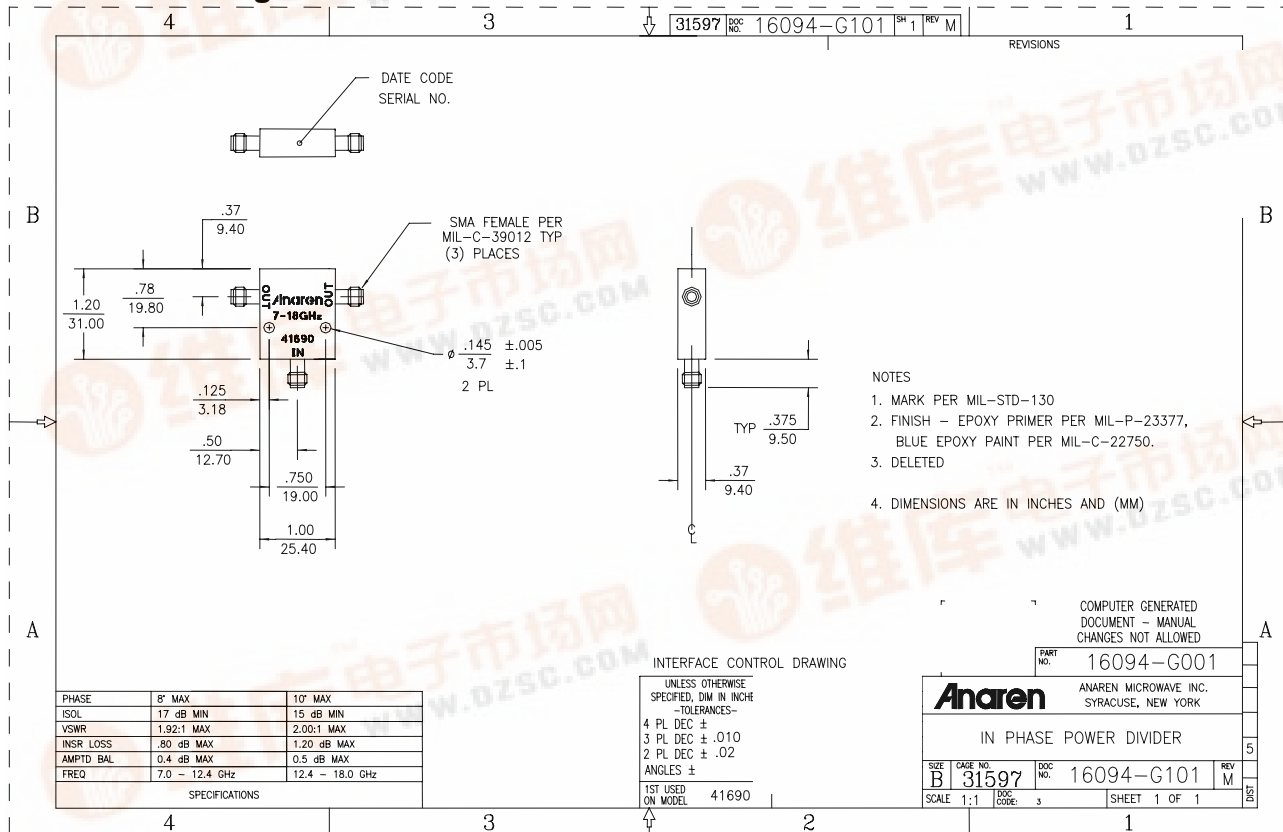
- Military Grade
- 7.0 – 18.0 GHz
- 2-Way Power Split
- In-Phase
- Connectors Per MIL-C-39012
- Rugged Aluminum Housing
- Low VSWR
- Meets MIL-E-5400 Class 3 Requirements



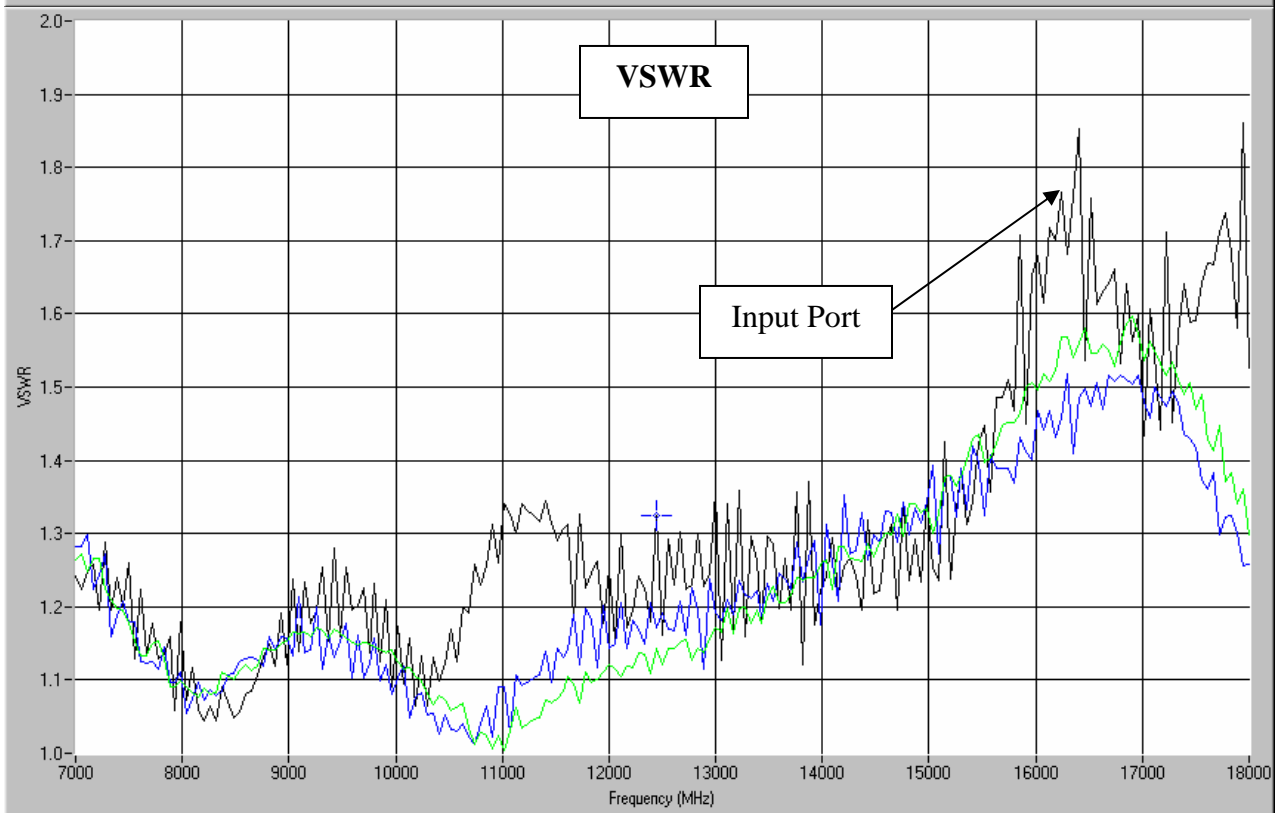
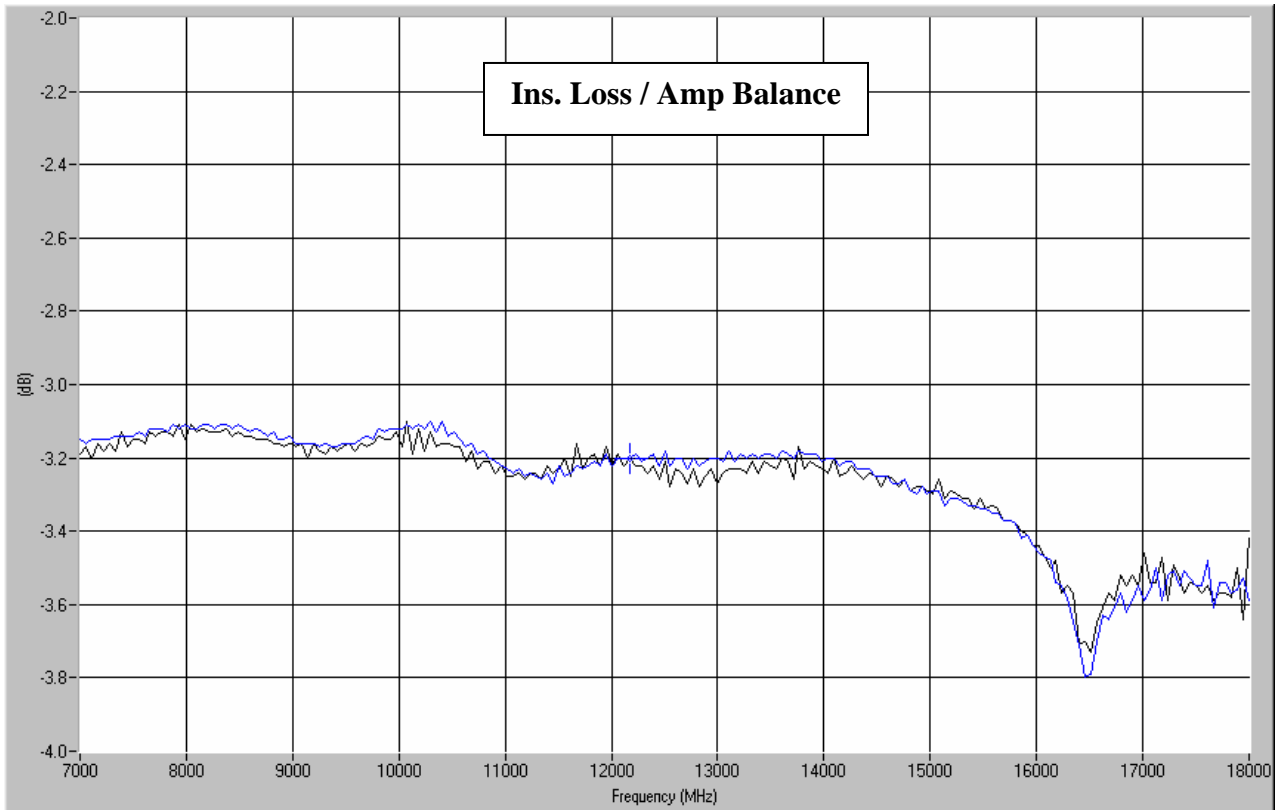
NOTES: Input power with load VSWR of 1.20:1

Electrical and Mechanical Specifications subject to change without notice

#### Outline Drawing



Model 41690

[查询“41690”供应商](#)**Anaren**<sup>®</sup>**Typical Test Data Plots**

USA/Canada: (315) 432-8909  
Toll Free: (800) 411-6596  
Europe: +44 2392-232392

**Anaren**  
What'll we think of next?™

### Typical Test Data Plots

