

# Series 100R

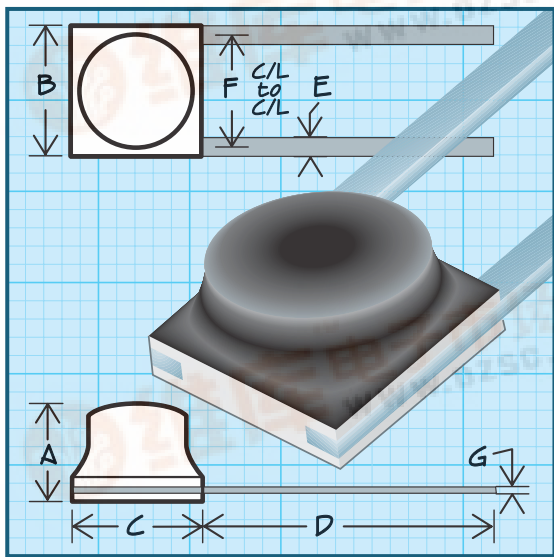
RoHS Compliant

MILITARY QPL APPROVED

查询"100-271M"供应商

## Micro i Ribbon-Lead Inductors

RF INDUCTORS



### Military Specifications MS21367 (LT10K)

#### Physical Parameters

	Inches	Millimeters
A	0.065 Max.	1.65 Max.
B	0.100 ± 0.010	2.54 ± 0.254
C	0.100 ± 0.010	2.54 ± 0.254
D	0.210 Min.	5.33 Min.
E	0.012 ± 0.002 (Typ.)	0.30 ± 0.05
F	0.095 ± 0.015	2.41 ± 0.381
G	0.002 +0.001-0.000	0.05 +0.025-0.000

Weight Max. (Grams) 0.03

Current Rating at 90°C Ambient 15°C Rise

Operating Temperature Range -55°C to +105°C

Maximum Power Dissipation at 90°C 0.0205-Watts

**Notes** 1) L, Q and SRF measured on Boonton Q and RX meters using special test fixtures. Details for fixtures available. 2) Part number and quantity will appear on package as units are too small for legible marking.

**Core Material** Iron (LT10K)

**Mechanical Configuration** 1) Units are epoxy encapsulated. 2) Leads are tin/lead plated Beryllium Copper 3) Gold Plated leads available on special order. 4) RoHS compliant part available by ordering 100R Series.

**Packaging** Bulk only

Made In the U.S.A. Patent Protected

DASH NUMBER\*  
MIL DASH #  
INDUCTANCE (µH)  
TOLERANCE  
Q MINIMUM  
TEST FREQUENCY (MHz)  
SRF MINIMUM (MHz)  
DC RESISTANCE MAXIMUM (OHMS)  
CURRENT RATING MAX. (mA)

MS21367- SERIES 100 IRON CORE (LT10K)								
-150N	1	0.015	±30%	40	50.0	250	0.065	492
-220N	2	0.022	±30%	40	50.0	250	0.090	418
-330N	3	0.033	±30%	40	50.0	250	0.115	370
-470N	4	0.047	±30%	40	50.0	250	0.120	360
-680N	5	0.068	±30%	40	50.0	250	0.150	324
-101N	6	0.100	±30%	40	50.0	250	0.170	304
-121M	7	0.12	±20%	35	25.0	250	0.140	335
-151M	8	0.15	±20%	40	25.0	250	0.160	313
-181M	9	0.18	±20%	40	25.0	250	0.190	287
-221M	10	0.22	±20%	40	25.0	250	0.21	274
-271M	11	0.27	±20%	40	25.0	250	0.24	256
-331M	12	0.33	±20%	40	25.0	250	0.25	251
-391M	13	0.39	±20%	40	25.0	200	0.28	237
-471M	14	0.47	±20%	40	25.0	175	0.31	225
-561M	15	0.56	±20%	40	25.0	170	0.45	185
-681M	16	0.68	±20%	40	25.0	165	0.62	159
-821M	17	0.82	±20%	35	25.0	160	0.65	155
-102M	18	1.00	±20%	35	25.0	135	0.73	145
-122K	19	1.20	±10%	35	7.9	120	1.00	125
-152K	20	1.50	±10%	32	7.9	110	1.20	114
-182K	21	1.80	±10%	32	7.9	95	1.50	102
-222K	22	2.20	±10%	35	7.9	80	1.70	96
-272K	23	2.70	±10%	35	7.9	70	2.00	89
-332K	24	3.30	±10%	37	7.9	65	2.20	84
-392K	25	3.90	±10%	37	7.9	60	2.80	75
-472K	26	4.70	±10%	40	7.9	55	3.10	71
-562K	27	5.60	±10%	40	7.9	50	3.30	69
-682K	28	6.80	±10%	40	7.9	45	3.80	64
-822K	29	8.20	±10%	40	7.9	43	5.00	56
-103K	30	10.0	±10%	40	7.9	40	5.60	53

Parts listed above are QPL/MIL qualified

Optional Tolerances: J = 5% H = 3% G = 2% F = 1%

\*Complete part # must include series # PLUS the dash #

For further surface finish information, refer to TECHNICAL section of this catalog.



Delevan

www.delevan.com E-mail: apisales@delevan.com  
270 Quaker Rd., East Aurora NY 14052 • Phone 716-652-3600 • Fax 716-652-4814