

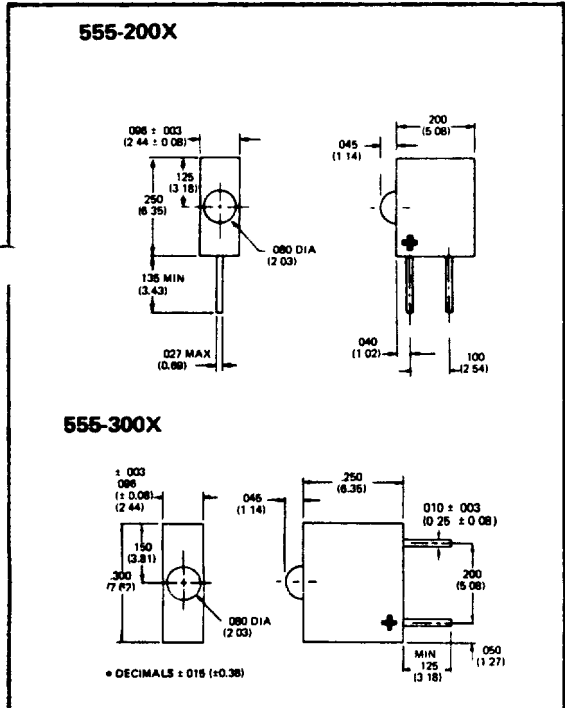
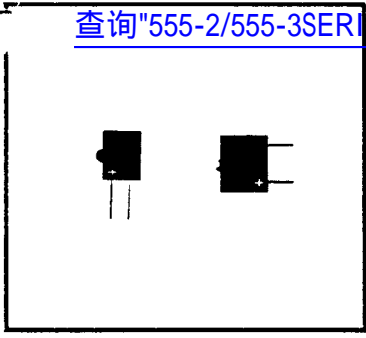
170-832
170-833

查询"555-2/555-3SERIES"供应商

555 series



LED Circuit Board Indicators



() Metric dimension in mm.

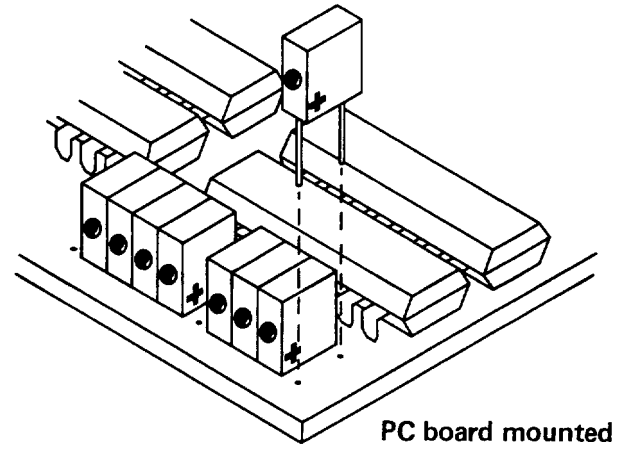
Absolute Maximum Ratings

| | |
|-----------------------|-------------------|
| Operating Temperature | -55° C to +75° C |
| Storage Temperature | -55° C to +100° C |
| Lead Soldering Temp | 260° C for 5 secs |

| Part Number | LED Color | Test Cond | Current (mA) | |
|-------------|-----------|-----------|--------------|---------|
| | | | Typ | Max. |
| 555 2001 | 555-3001 | Red | 1.6V | * * * |
| 555 2002 | 555-3002 | Red | 3.6V | 20 25 |
| 555 2007 | 555-3007 | Red | 5.0V | 3 4 |
| 555 2003 | 555-3003 | Red | 5.0V | 6 8 |
| 555 2004 | 555-3004 | Red | 5.0V | 16 20 |
| 555 2005 | 555-3005 | Red | 10.0V | 14 16 |
| 555-2006 | 555-3006 | Red | 14.0V | 10 12 |
| 555 2008 | 555-3008 | Red | 24.0V | 3 4 |
| 555-2301 | 555-3301 | Green | 2.4V | * * * |
| 555-2303 | 555-3303 | Green | 5.0V | 4.7 6.7 |
| 555 2401 | 555-3401 | Yellow | 2.2V | * * * |
| 555 2403 | 555-3403 | Yellow | 5.0V | 4.7 6.7 |

*Requires External Resistor. Maximum DC forward current 40 mA Typical operating current 20 mA

These low cost LED circuit board indicators are extremely versatile devices that lend themselves to a wide range of applications. Typically they might be used as fault indicators for trouble shooting complex circuits.



Applications

- Logic Status Indicator
- Binary data display— permits stacking so that multiple functions can be displayed
- Circuit board indicator

Features

- Low cost
- Very low power consumption
- High reliability—life measured in years
- Polarity identified
- Built-in series resistor
- Compact design permits dense packaging
Units can be mounted 10 to the inch
- Black case enhances contrast ratio
- Available in a range of voltages and currents

Dialight reserves the right to make changes at anytime in order to improve design and to supply the best product possible.

DIALIGHT
CORPORATION
A NORTH AMERICAN PHILIPS COMPANY

203 HARRISON PLACE • BROOKLYN, N.Y. 11237-1587 • 212 497-7600 • TWX. 710-584-5487



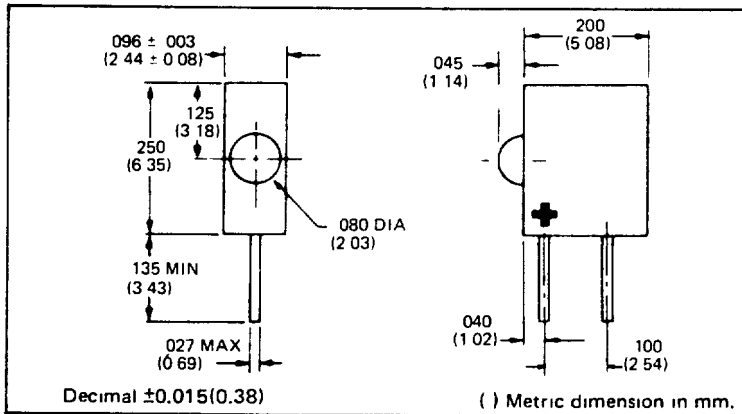
查询"555-2/555-3SERIES"供应商

555-2001, 555-2003, 555-2004, 555-2007



DIODE-LITE®

LED Circuit Board Indicators



Applications

- Logic Status Indicator.
- Position Indicator.
- Circuit Board Indicator.

Features

- TTL Compatible.
- Current limited versions for 3mA, 6mA or 16mA operation at 5 volts.
- Positive seating and spacing of light source to PCB surface.
- Facilitates PCB mounting and wave soldering.
- Black case enhances contrast ratio.
- Compatible with 555-4000 series four element arrays.

Description

The 555-2000 Diode-Lite series are Gallium Arsenide Phosphide red Light Emitting Diodes.

The 555-2003, 555-2004 and 555-2007 have integral current limiting resistors for 6mA, 16mA or 3mA operation respectively at 5 volts.

The 555-2001 requires external current limiting.

A red diffused lens encased in black plastic enhances the on/off contrast ratio. This unique package also allows positive seating to the PCB surface to facilitate mounting and soldering operations. Units are stackable with elements and leads on 0.100 inch centers.

Maximum Ratings at T_A = 25° C

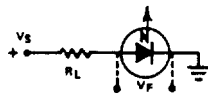
| Parameter | 555-2001 | 555 2003 555 2004 555 2007 | Units |
|--|----------------------|----------------------------------|-------|
| Continuous Forward Voltage | | 6* | V |
| Continuous Forward Current | 40** | | mA |
| Reverse Voltage | 3 | 6 | V |
| Storage and Operating Temperature | -55° C to +100° C | | |
| Lead Soldering Temperature (1/16" from case) | 260° C for 5 seconds | | |

*Derate linearly to 5.0V at 75° C

**Derate above 25° C at 0.4 mA/° C

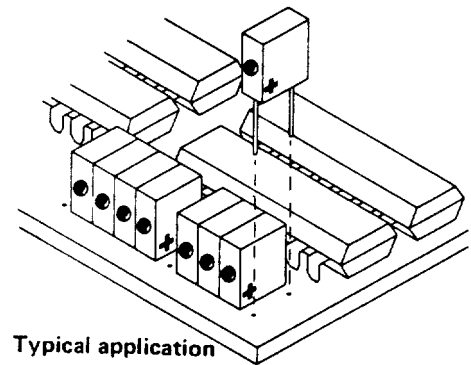
Operating Characteristics at T_A = 25° C

| Parameter | Units | Current Limiting Required | | Test Conditions | Current Limited | | | | | | Test Conditions |
|--------------------|-------|---------------------------|-----|------------------------|-----------------|-----|----------|------|----------|-----|----------------------|
| | | 555-2001 | | | 555-2003 | | 555-2004 | | 555-2007 | | |
| | | Typ | Max | | Typ | Max | Typ | Max | Typ | Max | |
| Forward Current | mA | | | I _F = 20 mA | 6.0 | 8.0 | 16.0 | 20.0 | 3.0 | 4.0 | V _F = 5 V |
| Forward Voltage | V | 1.6 | 2.0 | | | | | | | | |
| Luminous Intensity | mcd | 3.0 | | | 1.2 | | 2.0 | | 0.6 | | |
| Peak Wavelength | nm | 650 | | | 650 | | 650 | | 650 | | |
| Reverse Current | µA | | 100 | V _R = 3 V | | 100 | | 10 | | 100 | V _R = 6 V |



Note:
The 555-2001 requires external limiting resistors

CHOOSE I_F FOR DESIRED BRIGHTNESS



Dialight reserves the right to make changes at anytime in order to improve design and to supply the best product possible.

DIALIGHT
CORPORATION

203 HARRISON PLACE • BROOKLYN, N.Y. 11237-1587 • 212 497-7600 • TWX: 710-584-5487

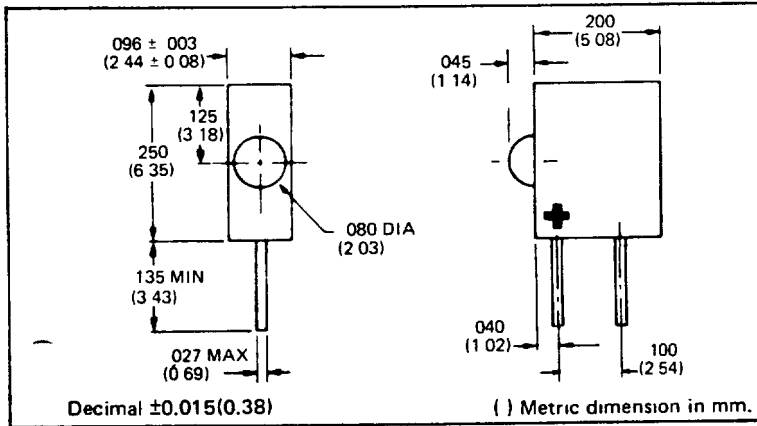
A NORTH AMERICAN PHILIPS COMPANY

DIALCO®

查询"555-2/555-3SERIES"供应商

Green 555-2301, 555-2303 Yellow 555-2401, 555-2403 LED Circuit Board Indicators

Actual size



Applications

- Logic Status Indicator.
- Position Indicator.
- Circuit Board Indicator.

Features

- TTL Compatible.
- Current limited version for 6 mA operation at 5 volts.
- Positive seating and spacing of light source to PCB surface.
- Facilitates PCB mounting and wave soldering.
- Black case enhances contrast ratio.
- Compatible with 555-4000 series four element arrays.

Maximum Ratings at TA = 25°C

| Parameter | 555-2301 555-2401 | 555-2303 | 555-2403 | Units |
|--|----------------------|----------|----------|-------|
| Continuous Forward Voltage | | 6* | 6* | V |
| Continuous Forward Current | 25** | | | mA |
| Reverse Voltage | 3 | 6 | 6 | V |
| Storage and Operating Temperature | -55°C to +100°C | | | |
| Lead Soldering Temperature (1/16" from case) | 260°C for 5 seconds | | | |

*Derate above 25°C at 20 mV/°C
**Derate above 25°C at 0.4 mA/°C

Description

The 555-2303 and 555-2403 have integral current limiting resistors for 6 mA operation at 5 volts.

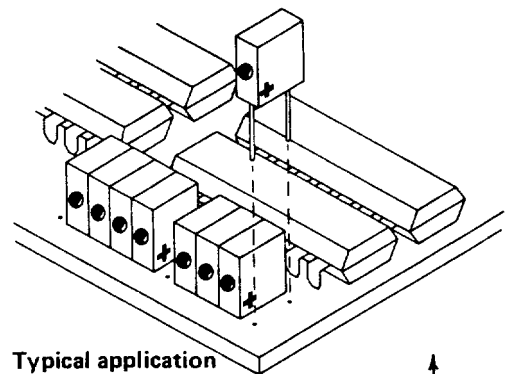
The 555-2301 and 555-2401 require external current limiting.

A yellow or green diffused lens encased in black plastic enhances the on/off contrast ratio. This unique package also allows positive seating to the PCB surface to facilitate mounting and wave soldering operations. Units are stackable with elements and leads on 0.100 inch centers.

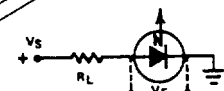
Operating Characteristics at TA = 25°C

| Parameter | Units | Current Limiting Required | | | | Test Conditions |
|--------------------|-------|---------------------------|------|----------|------|-----------------------|
| | | 555-2301 | | 555-2401 | | |
| | | Typ. | Max. | Typ. | Max. | |
| Forward Current | mA | | | | | IF = 20 mA VR = 3V |
| Forward Voltage | V | 2.4 | 3.0 | 2.2 | 3.0 | |
| Luminous Intensity | mcd | 1.0 | | 2.0 | | |
| Peak Wavelength | nm | 565 | | 583 | | |
| Reverse Current | µA | .15 | 10 | 15 | 10 | |

| Parameter | Units | Current Limited | | | | Test Conditions |
|--------------------|-------|-----------------|------|----------|------|--------------------|
| | | 555-2303 | | 555-2403 | | |
| | | Typ. | Max. | Typ. | Max. | |
| Forward Current | mA | 4.7 | 6.7 | 4.7 | 6.7 | VF = 5V VR = 6V |
| Forward Voltage | V | | | | | |
| Luminous Intensity | mcd | .5 | | .6 | | |
| Peak Wavelength | nm | 565 | | 583 | | |
| Reverse Current | µA | 15 | 10 | .15 | 10 | |



Typical application



Note:
The 555-2301 and 555-2401 both require external limiting resistors.

$$R_L = (V_S - V_F) / I_F$$

CHOOSE IF FOR DESIRED BRIGHTNESS

Dialight reserves the right to make changes at anytime in order to improve design and to supply the best product possible.

DIALIGHT
CORPORATION

203 HARRISON PLACE • BROOKLYN, N.Y. 11237-1587 • 212 497-7600 • TWX. 710-584-5437

DIALCO

A NORTH AMERICAN PHILIPS COMPANY