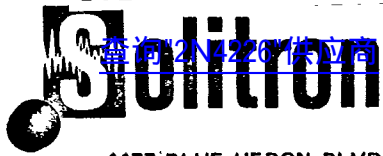


SOLITRON DEVICES INC

EJ DE 8368602 0001294 6

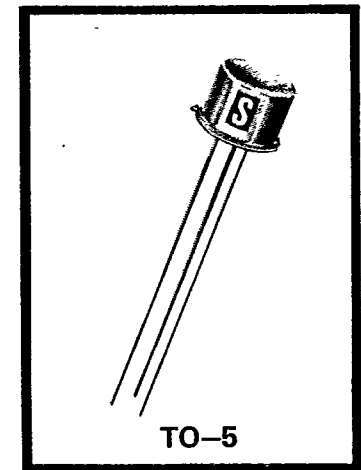
**SOLITRON DEVICES, INC.**

TRANSISTOR DIVISION

1177 BLUE HERON BLVD. • RIVIERA BEACH, FLA. 33404 • (305) 848-4311

**2N4225****2N4226****3 AMP****NPN POWER TRANSISTORS**

Solitron's 2N4225 and 2N4226 are Silicon NPN Power Transistors mounted in a TO-5 package. These devices are designed for use in high frequency pulse generators, high voltage switching circuits, small power supplies and solenoid driver circuits. Both devices can carry up to 3 Amps and can dissipate 5 Watts at 75°C.



TO-5

**ABSOLUTE MAXIMUM RATINGS**

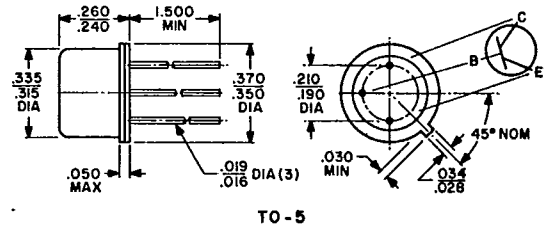
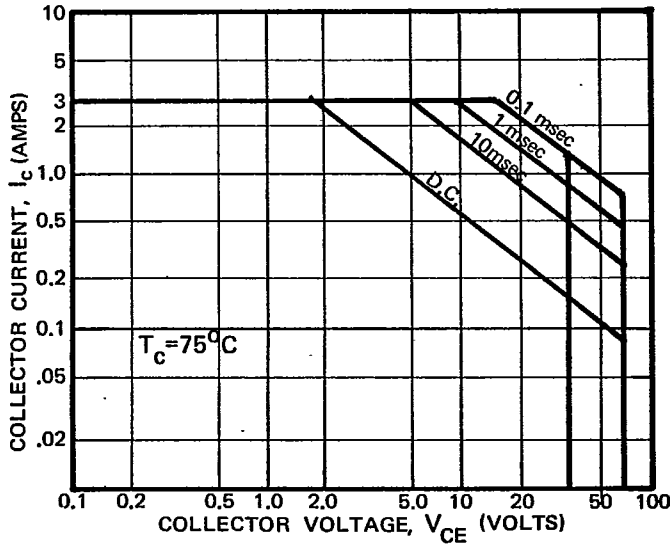
<u>SYMBOL</u>	<u>CHARACTERISTICS</u>	<u>2N4225</u>	<u>2N4226</u>
$BV_{CBO}$	Collector-Base Breakdown	80 V	100 V
$BV_{CEO}$	Collector-Emitter Breakdown	40 V	60 V
$BV_{EBO}$	Emitter-Base Breakdown	6.0 V	6.0 V
$I_C$	Collector Current	3.0 A	3.0 A
$I_B$	Base Current	0.5 A	0.5 A
$P_t$	Power Dissipation (100°C)	5.0 W	5.0 W
$T_J$	Junction Temperature Range	-65°C to +175°C	
$T_{STG}$	Storage Temperature Range	-65°C to +175°C	
$\theta_{J-C}$	Thermal Resistance (Junction to Case)	20°C/W	

2N4225-1

SOLITRON DEVICES INC

61 DE 8368602 0001295 8

[查询"2N4226"供应商](#)



CASE DRAWING

**ELECTRICAL CHARACTERISTICS (25°C Ambient)**

**Static**

SYMBOL	CONDITIONS	MIN.	TYP.	MAX.	UNITS	TYPE
$BV_{CBO}$	$I_C = 0.1 \text{ mA}, I_E = 0$	80	—	—	Volts	2N4225
	$I_C = 0.1 \text{ mA}, I_E = 0$	100	—	—	Volts	2N4226
$BV_{CEO}$	$I_C = 10 \text{ mA}, I_B = 0$	40	—	—	Volts	2N4225
	$I_C = 10 \text{ mA}, I_B = 0$	60	—	—	Volts	2N4226
$BV_{EBO}$	$I_E = 0.1 \text{ mA}, I_C = 0$	6.0	—	—	Volts	Both
$I_{CBO}$	$V_{CB} = 30 \text{ V}, I_E = 0$	—	0.01	0.1	$\mu\text{A}$	Both
$h_{FE}$	$I_C = 1.0 \text{ A}, V_{CE} = 5.0 \text{ V}$	40	—	150	—	Both
	$I_C = 2.0 \text{ A}, V_{CE} = 10 \text{ V}$	25	—	—	—	2N4225
	$I_C = 2.0 \text{ A}, V_{CE} = 10 \text{ V}$	20	—	—	—	2N4226
$V_{CE(sat)}$	$I_C = 1.0 \text{ A}, I_B = 0.1 \text{ A}$	—	0.32	0.5	Volts	Both
$V_{BE(sat)}$	$I_C = 1.0 \text{ A}, I_B = 0.1 \text{ A}$	—	—	1.25	Volts	Both

**Dynamic**

$h_{fe}$	$I_C = 0.25 \text{ A}, V_{CE} = 20 \text{ V}, f = 20 \text{ MHz}$	—	5	—	—	Both
$t_d$	$I_C = 1.5 \text{ A}, I_B = 0.15 \text{ A}$	—	2	—	nsec	Both
$t_r$	$I_C = 1.5 \text{ A}, I_B = 0.15 \text{ A}$	—	50	—	nsec	Both
$t_s$	$I_C = 1.5 \text{ A}, I_B = 0.15 \text{ A}$	—	50	—	nsec	Both
$t_f$	$I_C = 1.5 \text{ A}, I_B = 0.15 \text{ A}$	—	80	—	nsec	Both
$C_{ob}$	$V_{CB} = 10 \text{ V}, f = 1 \text{ MHz}, I_E = 0$	—	—	25	pf	Both
$C_{ib}$	$V_{EB} = 0.5 \text{ V}, f = 1 \text{ MHz}, I_C = 0$	—	—	150	pf	Both

2

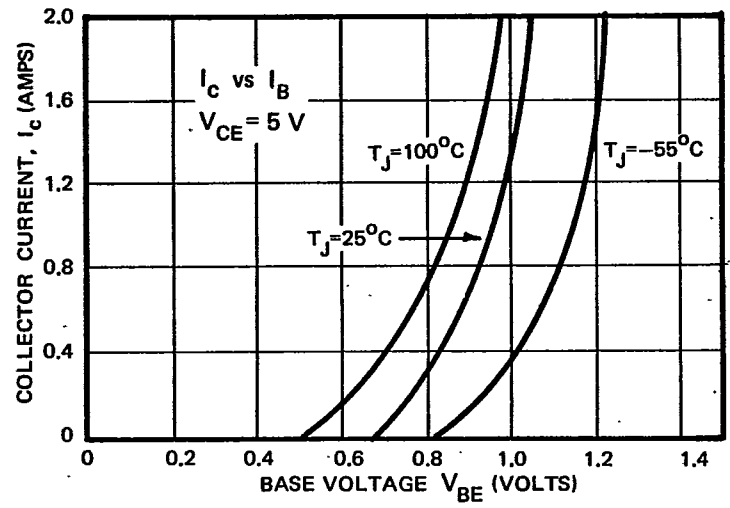
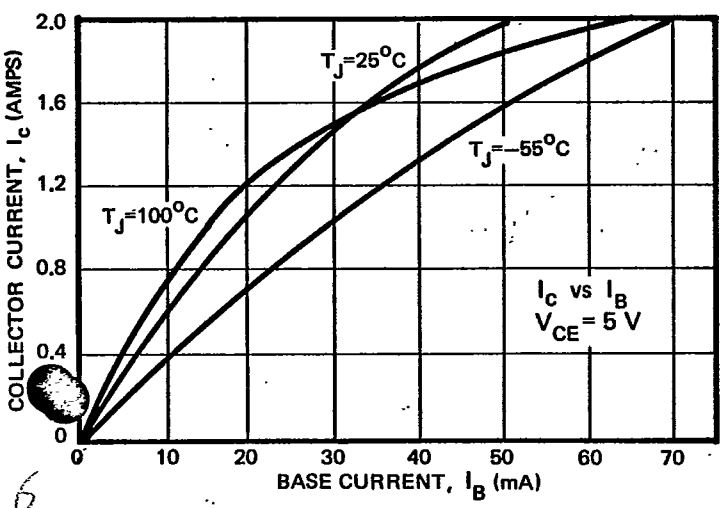
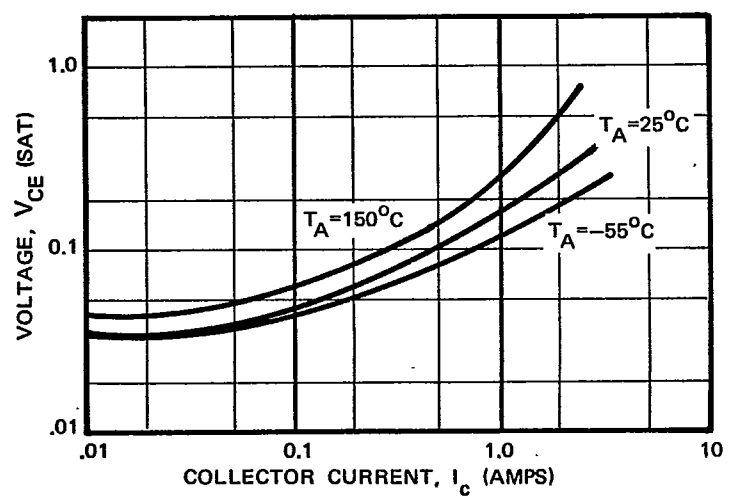
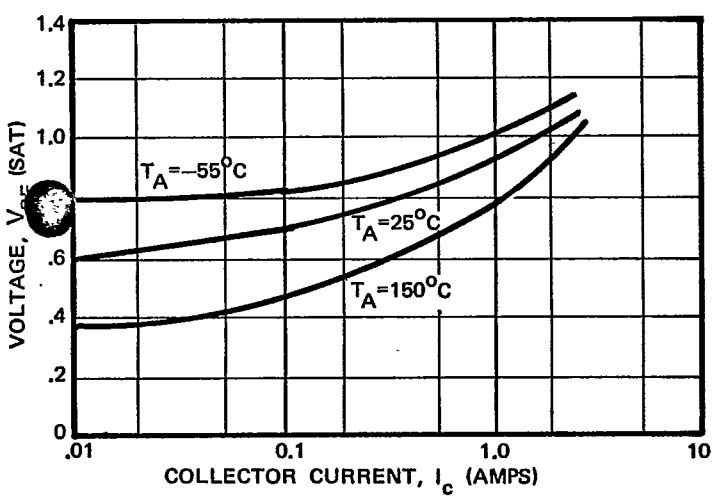
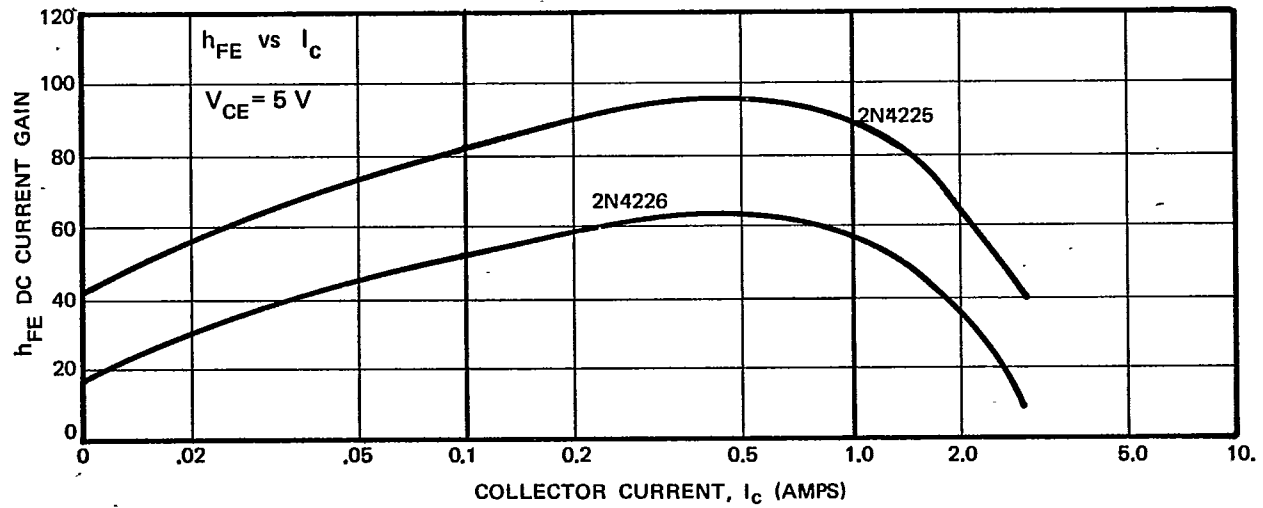
1454

F-07

2N4225-2

# CHARACTERISTIC CURVES (ALL TYPES)

查询"2N4226"供应商



3

2N4225-3

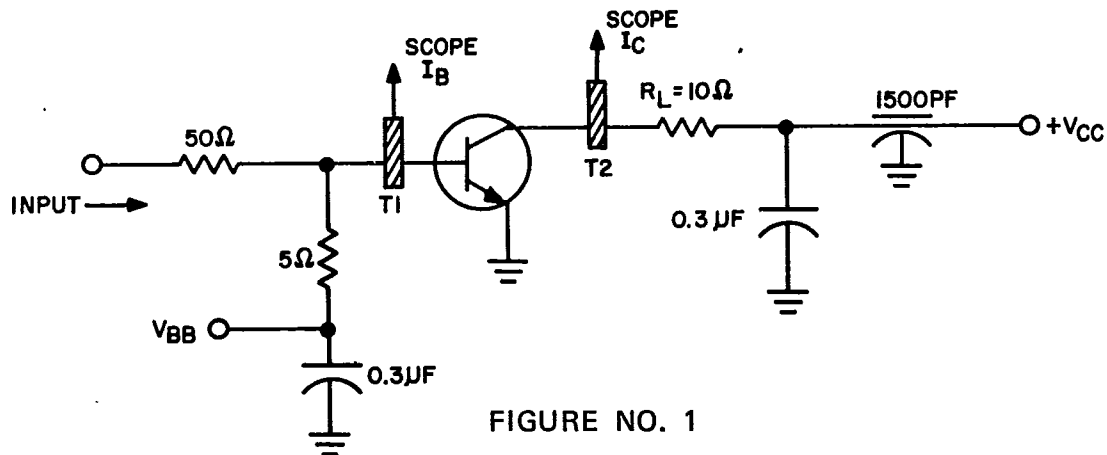
[查询"2N4226"供应商](#)

FIGURE NO. 1

Input drive is adjusted to 1.3 A if the pulse generator with  $50\ \Omega$  internal impedance is terminated into a  $50\ \Omega$  load.

$V_{BB}$	= -5 V
$V_{CC}$	= 22 V
$I_c$	= 1.5 A
$I_B$ (typ)	= 150 mA
$t_p$	= 100 nsec

### SOLITRON REGIONAL OFFICES

#### NORTHEAST

256 Oak Tree Road  
Tappan, New York 10983  
Telephone No. (914) 359-5050  
TWX No. (710) 576-2654

#### SOUTHEAST

1177 Blue Heron Blvd.  
Riviera Beach, Florida 33404  
Telephone No. (305) 848-4311  
TWX No. (510) 952-6676

#### MIDWEST

Suite No. 218  
O'Hare Officer Center North  
2720 Des Plaines Avenue  
Des Plaines, Illinois 60018  
Telephone No. (312) 824-8127  
TWX No. (910) 233-2634

#### SOUTHWEST

13333 N. Central Expressway  
Suite No. 220  
Dallas, Texas 75080  
Telephone No. (214) 231-8224

#### WESTERN

4014 Long Beach Blvd.  
Long Beach, California 90807  
Telephone No. (213) 426-0331  
TWX No. (910) 341-6417

#### EUROPE

Solidev Ltd.  
9A High Street  
Bromley, Kent, England  
Telephone No. (Bromley) 01-464-4588  
Cable - Solidev Bromley  
Kent, England

When you think of semiconductors... think Solitron!

2N4225-4