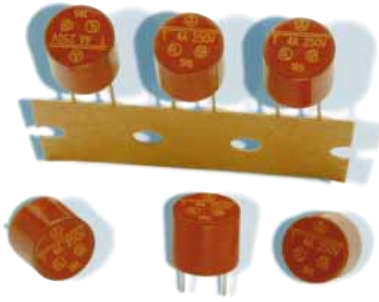
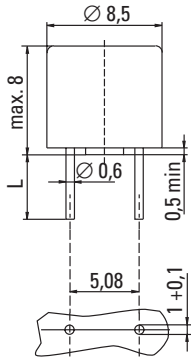


TR5® / No. 374/379 **UL 248-14, 250V, T**

[查询"374005000"供应商](#)



**Dimensions (mm)**



Holes in PCB  
Long Leads (L=18.8mm)  
Short Leads (L=4.3mm)

**Limits for Pre-arcing Time**

Rated Current	2.0 x I <sub>Rated</sub>
50mA ... 6.30A <sup>1</sup>	< 60s



**Time-Current Characteristic**

Time Lag (T)

**Standard**

UL 248-14  
CSA C22.2 No. 248.14

**Approvals**

UL Listed: File No. E 67006  
CSA Certified: File No. 51378

**Features**

- Reduced PCB space requirements
- Direct solderable or plug-in versions
- Internationally approved
- Low internal resistance
- Shocksafe casing
- Vibration resistant

**Weblinks**

**Data Sheet**

[www.wickmann.com/products/374.pdf](http://www.wickmann.com/products/374.pdf)

**Approval Certificates**

[www.wickmann.com/approvals](http://www.wickmann.com/approvals)

**Time-Current Curve**

Page 58  
[www.wickmann.com/itcurves](http://www.wickmann.com/itcurves)

**Packaging**

Page 118  
[www.wickmann.com/pack](http://www.wickmann.com/pack)

**FaxBack Document # 301**

**Specifications**

**Packaging**

00: Tape/Ampopack (1000 pcs.)  
41: Short Leads - Bulk (1000 pcs.)

**Materials**

Base/Cap: Brown Thermoplastic  
Polyamide PA 6.6, UL 94V0  
Round Pins: Copper alloy, tin plated

**Operating Temperature**

-40°C to +85°C (consider de-rating)  
-25°C to +70°C (8A, 10A; consider de-rating)

**Climatic Category**

-25°C/+70°C/21 days (EN 60068-1..3)

**Stock Conditions:**

+10°C to +60°C  
relative humidity ≤ 75% yearly average,  
without dew, maximum value for 30 days-95%

**Vibration Resistance**

24 cycles at 15 min. each (EN 60068-6)  
10 - 60Hz at 0.75mm amplitude  
60 - 2000Hz at 10g acceleration

**Lead Pull Strength**

10N (EN 60068-2-21)


**Solderability**

260°C, ≤ 3 sec. (Wave)  
350°C, ≤ 1 sec. (Hand)

**Soldering Heat Resistance**

260°C, 10 sec. (IEC 60068-2-20)

**Marking**

, TR5, 250V, T, Current Rating, Approvals

**Unit Weight**

0.77g (approx.)

**Permissible continuous operating current is ≤ 70% at ambient temperature of 23°C (73.4°F).**

Rated Current	Amp Code	Voltage Rating	Breaking Capacity	Voltage Drop 1.0 x I <sub>Rated</sub> max. (mV)	Power Dissipation 1.0 x I <sub>Rated</sub> max. (mW)	Melting Integral 10 x I <sub>Rated</sub> min. (A <sup>2</sup> s)	Approvals ≡ CSA
<b>No. 374</b>							
50mA	0050	250V		900	45	0.0056	• •
63mA	0063	250V		800	50	0.009	• • •
80mA	0080	250V		700	55	0.014	• • •
100mA	0100	250V		600	60	0.025	• • •
125mA	0125	250V		550	70	0.044	• • •
160mA	0160	250V		480	80	0.058	• • •
200mA	0200	250V		390	80	0.1	• • •
250mA	0250	250V		350	90	0.17	• • •
315mA	0315	250V		300	95	0.26	• • •
400mA	0400	250V	50A / 250VAC	250	100	0.32	• • •
500mA	0500	250V	50-60Hz	220	110	0.6	• • •
630mA	0630	250V	cos φ = 1.0	210	135	0.75	• • •
800mA	0800	250V		160	130	0.98	• • •
1.00A	1100	250V		155	155	2.1	• • •
1.25A	1125	250V		145	185	3.2	• • •
1.60A	1160	250V		130	210	4.5	• • •
2.00A	1200	250V		125	250	7.5	• • •
2.50A	1250	250V		120	300	14	• • •
3.15A	1315	250V		110	350	22	• • •
4.00A	1400	250V		100	400	36	• • •
5.00A	1500	250V		95	475	59	• • •
6.30A	1630	250V		90	570	110	• • •
<b>No. 379 for short circuit back-up protection</b>							
8.00A <sup>2</sup>	1800	250V	50A / 250VAC	80	800	110	
10.00A <sup>2</sup>	2100	250V	50-60Hz/cos φ = 1.0	90	1000	190	

<sup>1</sup> Ratings 8.00A and 10.00A: 0.7 x I<sub>Rated</sub> > 4h; 2.0 x I<sub>Rated</sub> < 60s

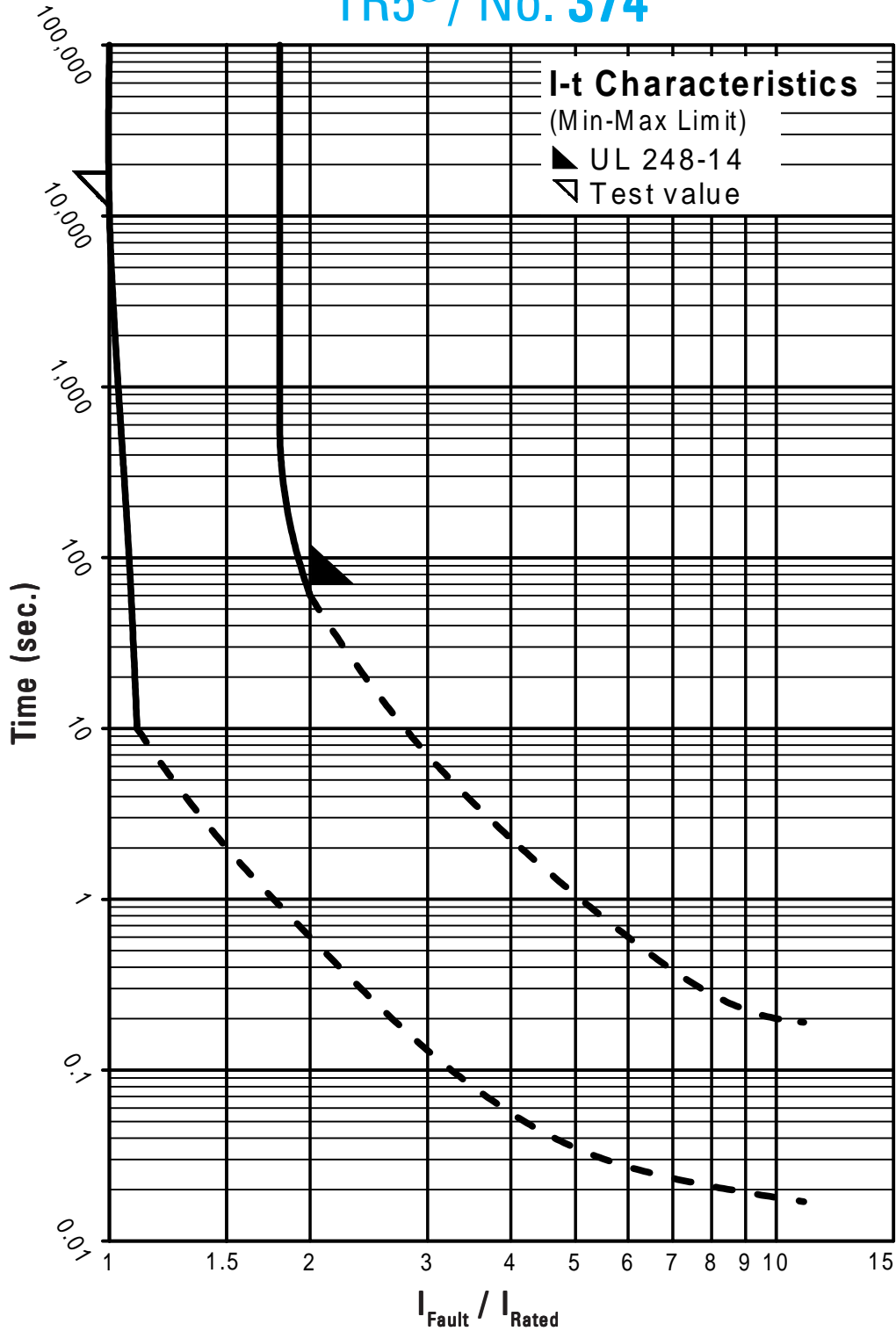
<sup>2</sup> Conducting path cross-section minimum ≥ 0.2mm<sup>2</sup>

**Order Information**

Qty.	Order-Number	Series	Amp Code	Packaging

[查询"374005000"供应商](#)

## TR5® / No. 374



Contact WICKMANN for individual I-t curves