

[查询"B7748"供应商](#)



SAW Components

Data Sheet B7748





SAW Components	B7748
Low-Loss Filter for Mobile Communication	836,5 MHz

Data Sheet **SMD**

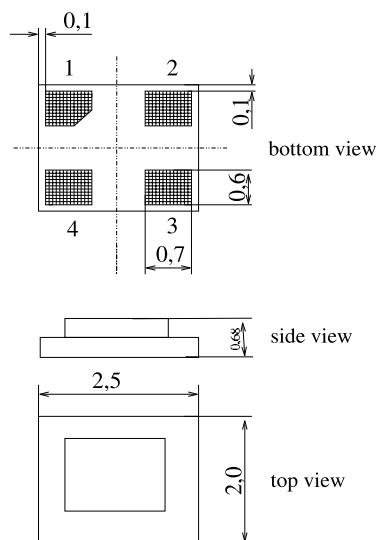
Features

- Low-loss RF filter for cell system, transmit path
- High counterband suppression
- Usable passband 25 MHz
- Unbalanced/unbalanced operation
- Package size: 2 mm x 2.5 mm (4 pin, diagonal pinning)

Terminals

- Ni, gold-plated

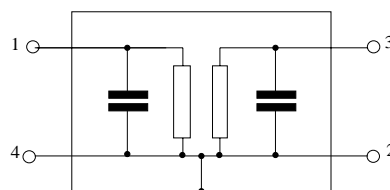
Chip sized SAW package **DCS4E**



Dimensions in mm, approx weight 0,012g

Pin configuration

- | | |
|-----|--------|
| 1 | Input |
| 3 | Output |
| 2,4 | Ground |



Type	Ordering code	Marking and Package according to	Packing according to
B7748	B39841-B7748-E510	C61157-A7-A121	F61074-V8153-Z000

Electrostatic Sensitive Device (ESD)

Maximum ratings

Operable temperature range	T	- 30 / + 85	°C	
Storage temperature range	T_{stg}	- 40 / + 85	°C	
DC voltage	V_{DC}	3	V	
ESD voltage	V_{ESD}	50	V	
Source power	P_s	16	dBm	

source impedance 50 Ω



SAW Components	B7748
Low-Loss Filter for Mobile Communication	836,5 MHz

Data Sheet



Characteristics

Operating temperature range: $T = -30$ to $+85$ °C
 Terminating source impedance: $Z_S = 50 \Omega$
 Terminating load impedance: $Z_L = 50 \Omega$

		min.	typ.	max.	
Center frequency	f_C	—	836,5	—	MHz
Maximum insertion attenuation	α_{max}	—	2,0	2,5	dB
824,0 ... 849,0 MHz					
Ripple	p-p	—	1,3	1,7	dB
824,0 ... 849,0 MHz					
Input return loss @ 50 Ohm					
824,0 ... 849,0 MHz		11	12	---	dB
Output return loss @ 50 Ohm					
824,0 ... 849,0 MHz		11	12	---	dB
Attenuation	α				
0,0 ... 779,0 MHz		32	37	—	dB
779,0 ... 804,0 MHz		38	45	—	dB
869,0 ... 894,0 MHz		39	46	—	dB
894,0 ... 1029,0 MHz		35	40	—	dB
1029,0 ... 1209,0 MHz		35	39	—	dB
1209,0 ... 1306,0 MHz		33	39	—	dB
1306,0 ... 1698,0 MHz		33	43	—	dB
1698,0 ... 2547,0 MHz		30	38	—	dB
2547,0 ... 5000,0 MHz		25	30	—	dB



SAW Components

B7748

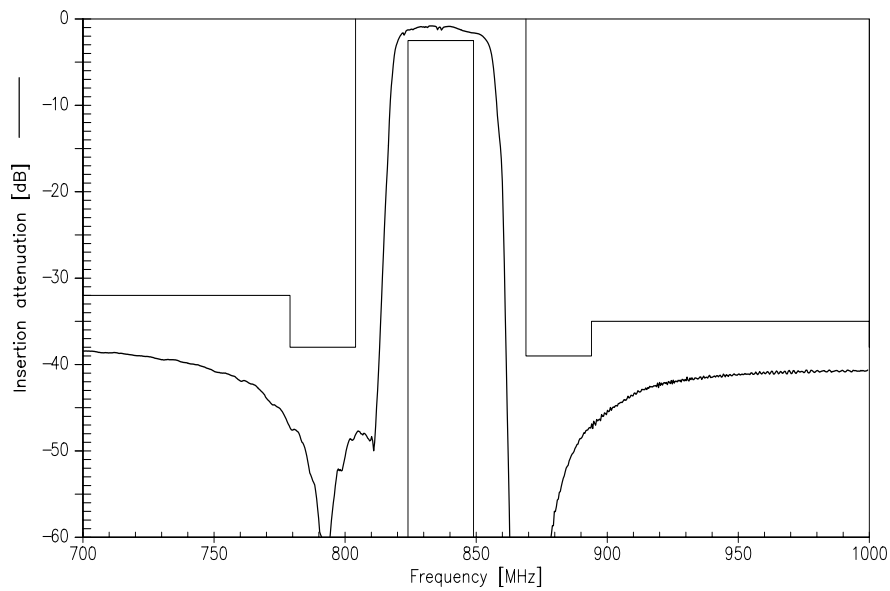
Low-Loss Filter for Mobile Communication

836,5 MHz

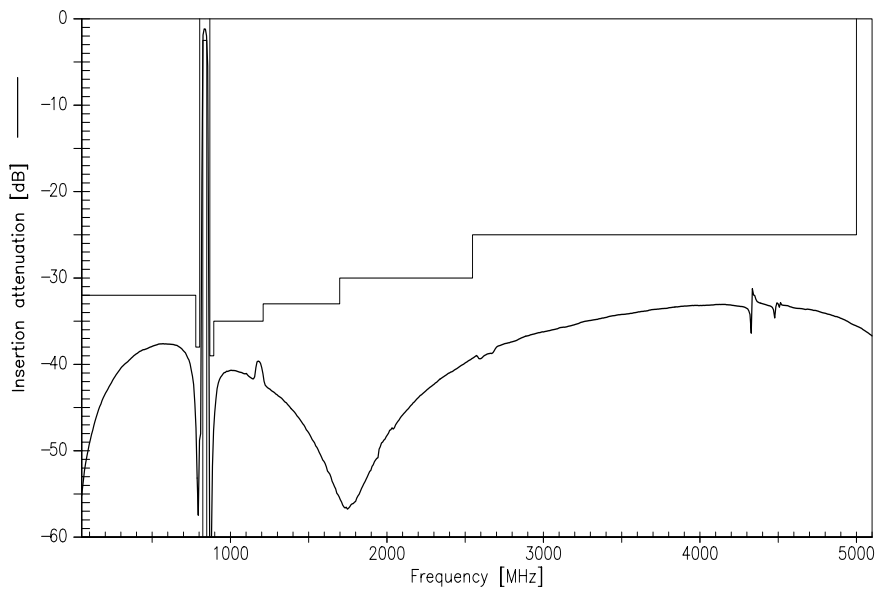
Data Sheet



Transfer function:



Transfer function (wide band):





SAW Components	B7748
Low-Loss Filter for Mobile Communication	836,5 MHz
Data Sheet	

Published by EPCOS AG

Surface Acoustic Wave Components Division, SAW MC WT

P.O. Box 80 17 09, D-81617 München

© EPCOS AG 2003. All Rights Reserved. Reproduction, publication and dissemination of this brochure and the information contained therein without EPCOS' prior express consent is prohibited.

The information contained in this brochure describes the type of component and shall not be considered as guaranteed characteristics. Purchase orders are subject to the General Conditions for the Supply of Products and Services of the Electrical and Electronics Industry recommended by the ZVEI (German Electrical and Electronic Manufacturers' Association), unless otherwise agreed.

This brochure replaces the previous edition.

For questions on technology, prices and delivery please contact the Sales Offices of EPCOS AG or the international Representatives.

Due to technical requirements components may contain dangerous substances. For information on the type in question please also contact one of our Sales Offices.