

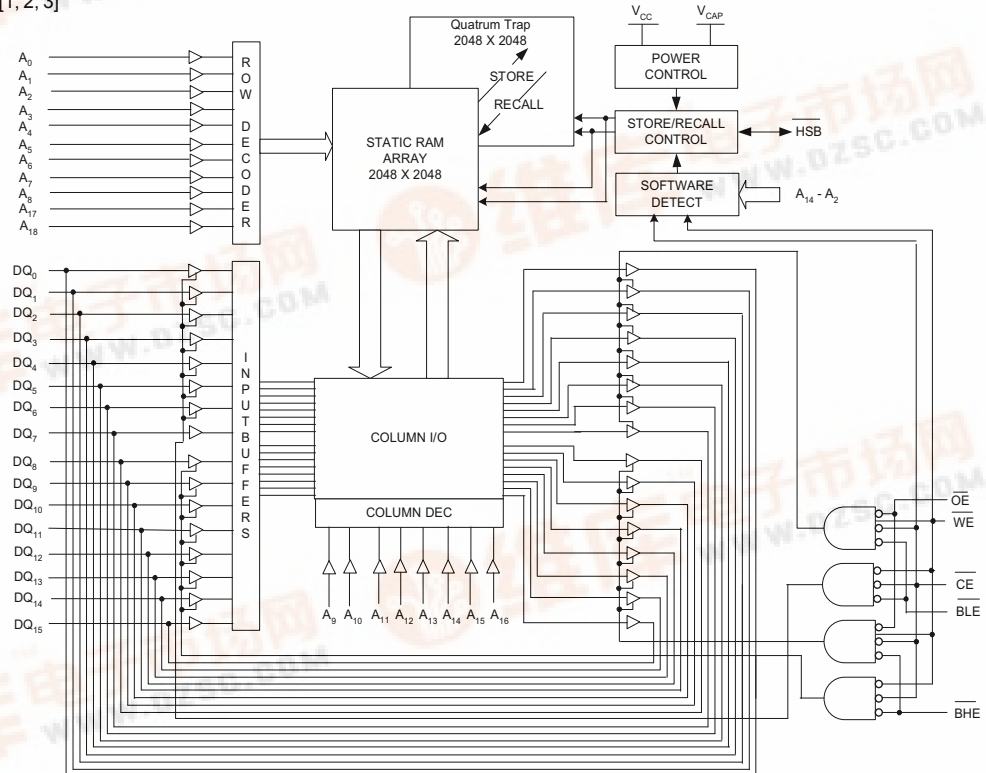
Features

- 20 ns, 25 ns, and 45 ns Access Times
- Internally Organized as 512K x 8 (CY14B104LA) or 256K x 16 (CY14B104NA)
- Hands Off Automatic STORE on Power Down with only a Small Capacitor
- STORE to QuantumTrap Nonvolatile Elements Initiated by Software, Device Pin, or AutoStore on Power Down
- RECALL to SRAM Initiated by Software or Power Up
- Infinite Read, Write, and Recall Cycles
- 200,000 STORE Cycles to QuantumTrap
- 20 year Data Retention
- Single 3V +20%, -10% Operation
- Commercial and Industrial Temperatures
- 48-Ball FBGA and 44/54-Pin TSOP-II Packages
- Pb-free and RoHS Compliance

Functional Description

The Cypress CY14B104LA/CY14B104NA is a fast static RAM, with a nonvolatile element in each memory cell. The memory is organized as 512K bytes of 8 bits each or 256K words of 16 bits each. The embedded nonvolatile elements incorporate QuantumTrap technology, producing the world's most reliable nonvolatile memory. The SRAM provides infinite read and write cycles, while independent nonvolatile data resides in the highly reliable QuantumTrap cell. Data transfers from the SRAM to the nonvolatile elements (the STORE operation) takes place automatically at power down. On power up, data is restored to the SRAM (the RECALL operation) from the nonvolatile memory. Both the STORE and RECALL operations are also available under software control.

Logic Block Diagram^[1, 2, 3]



Notes

1. Address A₀ - A₁₈ for x8 configuration and Address A₀ - A₁₇ for x16 configuration.
2. Data DQ₀ - DQ₇ for x8 configuration and Data DQ₀ - DQ₁₅ for x16 configuration.
3. BHE and BLE are applicable for x16 configuration only.

Pinouts

Figure 1. Pin Diagram - 48 FBGA

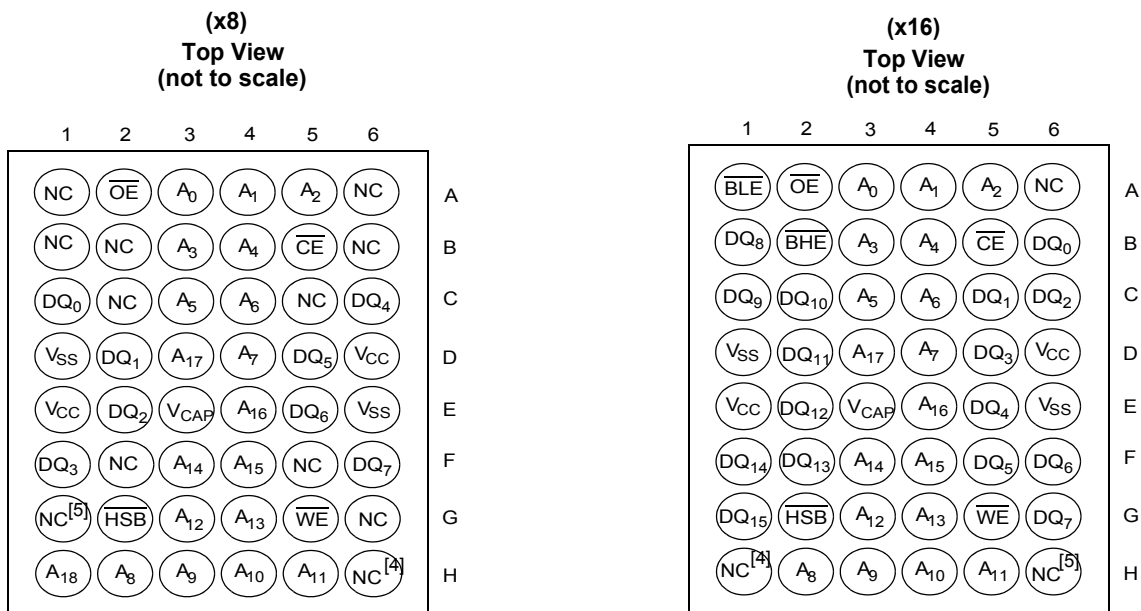
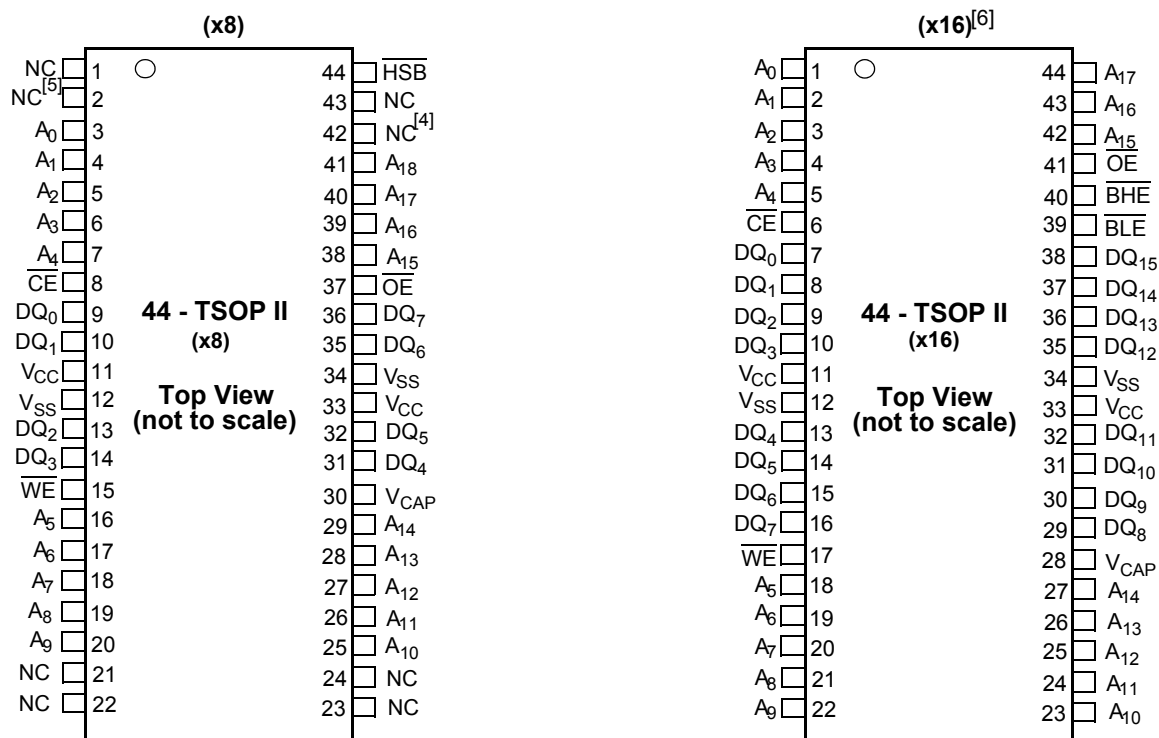


Figure 2. Pin Diagram - 44 Pin TSOP II



Notes

- Address expansion for 8 Mbit. NC pin not connected to die.
- Address expansion for 16 Mbit. NC pin not connected to die.
- HSB pin is not available in 44-TSOP II (x16) package.

Pinouts (continued)

Figure 3. Pin Diagram - 54 Pin TSOP II (x16)

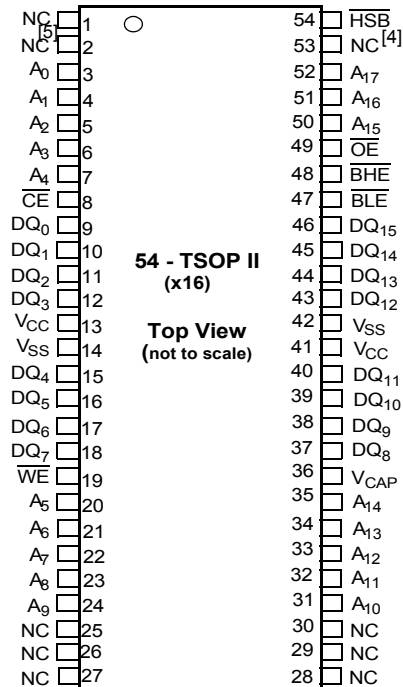


Table 1. Pin Definitions

| Pin Name | I/O Type | Description |
|------------------------------------|--------------|--|
| A ₀ – A ₁₈ | Input | Address Inputs Used to Select One of the 524,288 bytes of the nvSRAM for x8 Configuration. |
| A ₀ – A ₁₇ | | Address Inputs Used to Select One of the 262,144 words of the nvSRAM for x16 Configuration. |
| DQ ₀ – DQ ₇ | Input/Output | Bidirectional Data I/O Lines for x8 Configuration. Used as input or output lines depending on operation. |
| DQ ₀ – DQ ₁₅ | | Bidirectional Data I/O Lines for x16 Configuration. Used as input or output lines depending on operation. |
| $\overline{\text{WE}}$ | Input | Write Enable Input, Active LOW. When selected LOW, data on the I/O pins is written to the specific address location. |
| $\overline{\text{CE}}$ | Input | Chip Enable Input, Active LOW. When LOW, selects the chip. When HIGH, deselects the chip. |
| $\overline{\text{OE}}$ | Input | Output Enable, Active LOW. The active LOW $\overline{\text{OE}}$ input enables the data output buffers during read cycles. I/O pins are tristated on deasserting $\overline{\text{OE}}$ HIGH. |
| $\overline{\text{BHE}}$ | Input | Byte High Enable, Active LOW. Controls DQ ₁₅ - DQ ₈ . |
| $\overline{\text{BLE}}$ | Input | Byte Low Enable, Active LOW. Controls DQ ₇ - DQ ₀ . |
| V _{SS} | Ground | Ground for the Device. Must be connected to the ground of the system. |
| V _{CC} | Power Supply | Power Supply Inputs to the Device. |
| $\overline{\text{HSB}}^{[6]}$ | Input/Output | Hardware Store Busy (HSB). When LOW this output indicates that a hardware store is in progress. When pulled LOW external to the chip it initiates a nonvolatile STORE operation. A weak internal pull up resistor keeps this pin HIGH if not connected (connection optional). After each store operation HSB is driven HIGH for a short time with standard output high current. |
| V _{CAP} | Power Supply | AutoStore Capacitor. Supplies power to the nvSRAM during power loss to store data from SRAM to nonvolatile elements. |
| NC | No Connect | No Connect. This pin is not connected to the die. |

Device Operation

The CY14B104LA/CY14B104NA nvSRAM is made up of two functional components paired in the same physical cell. They are a SRAM memory cell and a nonvolatile QuantumTrap cell. The SRAM memory cell operates as a standard fast static RAM. Data in the SRAM is transferred to the nonvolatile cell (the STORE operation), or from the nonvolatile cell to the SRAM (the RECALL operation). Using this unique architecture, all cells are stored and recalled in parallel. During the STORE and RECALL operations, SRAM read and write operations are inhibited. The CY14B104LA/CY14B104NA supports infinite reads and writes similar to a typical SRAM. In addition, it provides infinite RECALL operations from the nonvolatile cells and up to 200K STORE operations. See the [Truth Table For SRAM Operations](#) on page 16 for a complete description of read and write modes.

SRAM Read

The CY14B104LA/CY14B104NA performs a read cycle when \overline{CE} and \overline{OE} are LOW and \overline{WE} and HSB are HIGH. The address specified on pins A_{0-18} or A_{0-17} determines which of the 524,288 data bytes or 262,144 words of 16 bits each are accessed. Byte enables (BHE , BLE) determine which bytes are enabled to the output, in the case of 16-bit words. When the read is initiated by an address transition, the outputs are valid after a delay of t_{AA} (read cycle 1). If the read is initiated by \overline{CE} or \overline{OE} , the outputs are valid at t_{ACE} or at t_{DOE} , whichever is later (read cycle 2). The data output repeatedly responds to address changes within the t_{AA} access time without the need for transitions on any control input pins. This remains valid until another address change or until \overline{CE} or \overline{OE} is brought HIGH, or \overline{WE} or HSB is brought LOW.

SRAM Write

A write cycle is performed when \overline{CE} and \overline{WE} are LOW and HSB is HIGH. The address inputs must be stable before entering the write cycle and must remain stable until \overline{CE} or \overline{WE} goes HIGH at the end of the cycle. The data on the common I/O pins DQ_{0-15} are written into the memory if the data is valid t_{SD} before the end of a \overline{WE} controlled write or before the end of an \overline{CE} controlled write. The Byte Enable inputs (BHE , BLE) determine which bytes are written, in the case of 16-bit words. It is recommended that \overline{OE} be kept HIGH during the entire write cycle to avoid data bus contention on common I/O lines. If \overline{OE} is left LOW, internal circuitry turns off the output buffers t_{HZWE} after \overline{WE} goes LOW.

AutoStore Operation

The CY14B104LA/CY14B104NA stores data to the nvSRAM using one of the following three storage operations: Hardware Store activated by HSB; Software Store activated by an address sequence; AutoStore on device power down. The AutoStore operation is a unique feature of QuantumTrap technology and is enabled by default on the CY14B104LA/CY14B104NA.

During a normal operation, the device draws current from V_{CC} to charge a capacitor connected to the V_{CAP} pin. This stored charge is used by the chip to perform a single STORE operation. If the voltage on the V_{CC} pin drops below V_{SWITCH} , the part automatically disconnects the V_{CAP} pin from V_{CC} . A STORE operation is initiated with power provided by the V_{CAP} capacitor.

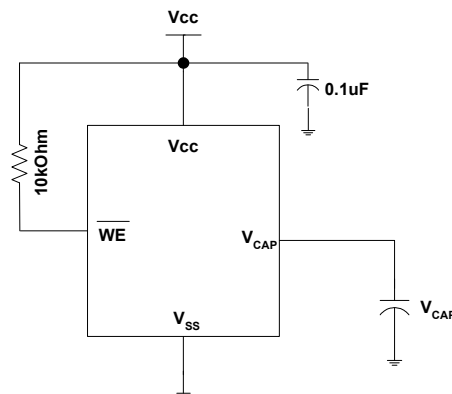
Note If the capacitor is not connected to V_{CAP} pin, AutoStore must be disabled using the soft sequence specified in [Preventing](#)

[AutoStore](#) on page 6. In case AutoStore is enabled without a capacitor on V_{CAP} pin, the device will attempt an AutoStore operation without sufficient charge to complete the Store. This may corrupt the data stored in nvSRAM.

Figure 4 shows the proper connection of the storage capacitor (V_{CAP}) for automatic store operation. Refer to [DC Electrical Characteristics](#) on page 8 for the size of V_{CAP} . The voltage on the V_{CAP} pin is driven to V_{CC} by a regulator on the chip. A pull up should be placed on \overline{WE} to hold it inactive during power up. This pull up is effective only if the \overline{WE} signal is tri-state during power up. Many MPUs tri-state their controls on power up. This should be verified when using the pull up. When the nvSRAM comes out of power-on-recall, the MPU must be active or the \overline{WE} held inactive until the MPU comes out of reset.

To reduce unnecessary nonvolatile stores, AutoStore and hardware store operations are ignored unless at least one write operation has taken place since the most recent STORE or RECALL cycle. Software initiated STORE cycles are performed regardless of whether a write operation has taken place. The HSB signal is monitored by the system to detect if an AutoStore cycle is in progress.

Figure 4. AutoStore Mode



Hardware STORE Operation

The CY14B104LA/CY14B104NA provides the $\overline{HSB}^{[6]}$ pin to control and acknowledge the STORE operations. Use the HSB pin to request a hardware STORE cycle. When the HSB pin is driven LOW, the CY14B104LA/CY14B104NA conditionally initiates a STORE operation after t_{DELAY} . An actual STORE cycle only begins if a write to the SRAM has taken place since the last STORE or RECALL cycle. The HSB pin also acts as an open drain driver that is internally driven LOW to indicate a busy condition when the STORE (initiated by any means) is in progress.

SRAM read and write operations that are in progress when \overline{HSB} is driven LOW by any means are given time to complete before the STORE operation is initiated. After \overline{HSB} goes LOW, the CY14B104LA/CY14B104NA continues SRAM operations for t_{DELAY} . If a write is in progress when \overline{HSB} is pulled LOW it is enabled a time, t_{DELAY} to complete. However, any SRAM write cycles requested after \overline{HSB} goes LOW are inhibited until \overline{HSB} returns HIGH. In case the write latch is not set, \overline{HSB} is not driven LOW by the CY14B104LA/CY14B104NA. But any SRAM read and write cycles are inhibited until \overline{HSB} is returned HIGH by MPU or other external source.

During any STORE operation, regardless of how it is initiated, the CY14B104LA/CY14B104NA continues to drive the HSB pin LOW, releasing it only when the STORE is complete. When the STORE operation is completed, the CY14B104LA/CY14B104NA remains disabled until the HSB pin returns HIGH. Leave the HSB unconnected if it is not used.

Hardware RECALL (Power Up)

During power up or after any low power condition ($V_{CC} < V_{SWITCH}$), an internal RECALL request is latched. When V_{CC} again exceeds the sense voltage of V_{SWITCH} , a RECALL cycle is automatically initiated and takes $t_{HRECALL}$ to complete. During this time, HSB is driven LOW by the HSB driver.

Software STORE

Transfer data from the SRAM to the nonvolatile memory with a software address sequence. The CY14B104LA/CY14B104NA software STORE cycle is initiated by executing sequential \overline{CE} controlled read cycles from six specific address locations in exact order. During the STORE cycle an erase of the previous nonvolatile data is first performed, followed by a program of the nonvolatile elements. After a STORE cycle is initiated, further input and output are disabled until the cycle is completed.

Because a sequence of READs from specific addresses is used for STORE initiation, it is important that no other read or write accesses intervene in the sequence, or the sequence is aborted and no STORE or RECALL takes place.

To initiate the software STORE cycle, the following read sequence must be performed.

1. Read Address 0x4E38 Valid READ
2. Read Address 0xB1C7 Valid READ
3. Read Address 0x83E0 Valid READ
4. Read Address 0x7C1F Valid READ
5. Read Address 0x703F Valid READ
6. Read Address 0x8FC0 Initiate STORE Cycle

The software sequence may be clocked with \overline{CE} controlled reads or \overline{OE} controlled reads. After the sixth address in the sequence is entered, the STORE cycle commences and the chip is disabled. HSB is driven LOW. It is important to use read cycles and not write cycles in the sequence, although it is not necessary that \overline{OE} be LOW for a valid sequence. After the t_{STORE} cycle time is fulfilled, the SRAM is activated again for the read and write operation.

Software RECALL

Transfer the data from the nonvolatile memory to the SRAM with a software address sequence. A software RECALL cycle is initiated with a sequence of read operations in a manner similar to the software STORE initiation. To initiate the RECALL cycle, the following sequence of \overline{CE} controlled read operations must be performed.

1. Read Address 0x4E38 Valid READ
2. Read Address 0xB1C7 Valid READ
3. Read Address 0x83E0 Valid READ
4. Read Address 0x7C1F Valid READ
5. Read Address 0x703F Valid READ
6. Read Address 0x4C63 Initiate RECALL Cycle

Internally, RECALL is a two step procedure. First, the SRAM data is cleared; then, the nonvolatile information is transferred into the SRAM cells. After the t_{RECALL} cycle time, the SRAM is again ready for read and write operations. The RECALL operation does not alter the data in the nonvolatile elements.

Table 2. Mode Selection

| \overline{CE} | \overline{WE} | $\overline{OE}, \overline{BHE}, \overline{BLE}^{[3]}$ | $A_{15} - A_0^{[7]}$ | Mode | I/O | Power |
|-----------------|-----------------|---|--|---|--|-----------------------|
| H | X | X | X | Not Selected | Output High Z | Standby |
| L | H | L | X | Read SRAM | Output Data | Active |
| L | L | X | X | Write SRAM | Input Data | Active |
| L | H | L | 0x4E38 0xB1C7 0x83E0 0x7C1F 0x703F 0x8B45 | Read SRAM Read SRAM Read SRAM Read SRAM Read SRAM AutoStore Disable | Output Data Output Data Output Data Output Data Output Data Output Data | Active ^[8] |

Notes

7. While there are 19 address lines on the CY14B104LA (18 address lines on the CY14B104NA), only the 13 address lines ($A_{14} - A_2$) are used to control software modes. Rest of the address lines are don't care.
8. The six consecutive address locations must be in the order listed. \overline{WE} must be HIGH during all six cycles to enable a nonvolatile cycle.

Table 2. Mode Selection (continued)

| $\overline{\text{CE}}$ | $\overline{\text{WE}}$ | $\overline{\text{OE}}, \overline{\text{BHE}}, \overline{\text{BLE}}^{[3]}$ | $\text{A}_{15} - \text{A}_0^{[7]}$ | Mode | I/O | Power |
|------------------------|------------------------|--|--|---|--|--------------------------------------|
| L | H | L | 0x4E38 0xB1C7 0x83E0 0x7C1F 0x703F 0x4B46 | Read SRAM Read SRAM Read SRAM Read SRAM Read SRAM AutoStore Enable | Output Data Output Data Output Data Output Data Output Data Output Data | Active ^[8] |
| L | H | L | 0x4E38 0xB1C7 0x83E0 0x7C1F 0x703F 0x8FC0 | Read SRAM Read SRAM Read SRAM Read SRAM Read SRAM Nonvolatile Store | Output Data Output Data Output Data Output Data Output Data Output High Z | Active $\text{I}_{\text{CC}2}^{[8]}$ |
| L | H | L | 0x4E38 0xB1C7 0x83E0 0x7C1F 0x703F 0x4C63 | Read SRAM Read SRAM Read SRAM Read SRAM Read SRAM Nonvolatile Recall | Output Data Output Data Output Data Output Data Output Data Output High Z | Active ^[8] |

Preventing AutoStore

The AutoStore function is disabled by initiating an AutoStore disable sequence. A sequence of read operations is performed in a manner similar to the software STORE initiation. To initiate the AutoStore disable sequence, the following sequence of $\overline{\text{CE}}$ controlled read operations must be performed:

1. Read address 0x4E38 Valid READ
2. Read address 0xB1C7 Valid READ
3. Read address 0x83E0 Valid READ
4. Read address 0x7C1F Valid READ
5. Read address 0x703F Valid READ
6. Read address 0x8B45 AutoStore Disable

The AutoStore is re-enabled by initiating an AutoStore enable sequence. A sequence of read operations is performed in a manner similar to the software RECALL initiation. To initiate the AutoStore enable sequence, the following sequence of $\overline{\text{CE}}$ controlled read operations must be performed:

1. Read address 0x4E38 Valid READ
2. Read address 0xB1C7 Valid READ
3. Read address 0x83E0 Valid READ
4. Read address 0x7C1F Valid READ
5. Read address 0x703F Valid READ
6. Read address 0x4B46 AutoStore Enable

If the AutoStore function is disabled or re-enabled, a manual STORE operation (hardware or software) must be issued to save the AutoStore state through subsequent power down cycles. The part comes from the factory with AutoStore enabled.

Data Protection

The CY14B104LA/CY14B104NA protects data from corruption during low voltage conditions by inhibiting all externally initiated STORE and write operations. The low voltage condition is detected when $V_{\text{CC}} < V_{\text{SWITCH}}$. If the CY14B104LA/CY14B104NA is in a write mode (both $\overline{\text{CE}}$ and $\overline{\text{WE}}$ are LOW) at power up, after a RECALL or STORE, the write is inhibited until the SRAM is enabled after t_{LZHSB} (HSB to output active). This protects against inadvertent writes during power up or brown out conditions.

Noise Considerations

Refer to CY application note [AN1064](#).

Best Practices

nvSRAM products have been used effectively for over 15 years. While ease-of-use is one of the product's main system values, experience gained working with hundreds of applications has resulted in the following suggestions as best practices:

- The nonvolatile cells in this nvSRAM product are delivered from Cypress with 0x00 written in all cells. Incoming inspection routines at customer or contract manufacturer's sites sometimes reprogram these values. Final NV patterns are typically repeating patterns of AA, 55, 00, FF, A5, or 5A. End product's firmware should not assume an NV array is in a set programmed state. Routines that check memory content values to determine first time system configuration, cold or warm boot status, and so on should always program a unique NV pattern (that is, complex 4-byte pattern of 46 E6 49 53 hex or more random bytes) as part of the final system manufacturing test to ensure these system routines work consistently.
- Power up boot firmware routines should rewrite the nvSRAM into the desired state (for example, autostore enabled). While the nvSRAM is shipped in a preset state, best practice is to again rewrite the nvSRAM into the desired state as a safeguard against events that might flip the bit inadvertently such as program bugs and incoming inspection routines.
- The VCAP value specified in this data sheet includes a minimum and a maximum value size. Best practice is to meet this requirement and not exceed the maximum VCAP value because the nvSRAM internal algorithm calculates VCAP charge and discharge time based on this max VCAP value. Customers that want to use a larger VCAP value to make sure there is extra store charge and store time should discuss their VCAP size selection with Cypress to understand any impact on the VCAP voltage level at the end of a t_{RECALL} period.

Maximum Ratings

Exceeding maximum ratings may impair the useful life of the device. These user guidelines are not tested.

Storage Temperature -65°C to +150°C

Maximum Accumulated Storage Time

At 150°C Ambient Temperature.....1000h

At 85°C Ambient Temperature.....20 Years

Ambient Temperature with

Power Applied -55°C to +150°C

Supply Voltage on V_{CC} Relative to GND..... -0.5V to 4.1V

Voltage Applied to Outputs

in High-Z State -0.5V to $V_{CC} + 0.5V$

Input Voltage -0.5V to $V_{CC} + 0.5V$

Transient Voltage (<20 ns) on

Any Pin to Ground Potential..... -2.0V to $V_{CC} + 2.0V$

Package Power Dissipation

Capability ($T_A = 25^\circ\text{C}$).....1.0W

Surface Mount Pb Soldering

Temperature (3 Seconds).....+260°C

DC Output Current (1 output at a time, 1s duration)15 mA

Static Discharge Voltage > 2001V
(per MIL-STD-883, Method 3015)

Latch Up Current..... > 200 mA

Operating Range

| Range | Ambient Temperature | V_{CC} |
|------------|---------------------|--------------|
| Commercial | 0°C to +70°C | 2.7V to 3.6V |
| Industrial | -40°C to +85°C | 2.7V to 3.6V |

DC Electrical Characteristics

Over the Operating Range ($V_{CC} = 2.7V$ to $3.6V$)

| Parameter | Description | Test Conditions | Min | Typ ^[9] | Max | Unit |
|-----------------|---|---|----------------|--------------------|----------------|----------------|
| I_{CC1} | Average V_{CC} Current | $t_{RC} = 20\text{ ns}$ $t_{RC} = 25\text{ ns}$ $t_{RC} = 45\text{ ns}$ Values obtained without output loads ($I_{OUT} = 0\text{ mA}$) | Commercial | | 65 65 50 | mA mA mA |
| | | | Industrial | | 70 70 52 | mA mA mA |
| I_{CC2} | Average V_{CC} Current during STORE | All Inputs Don't Care, $V_{CC} = \text{Max}$ Average current for duration t_{STORE} | | | 10 | mA |
| I_{CC3} | Average V_{CC} Current at $t_{RC} = 200\text{ ns}$, $V_{CC} (\text{Typ})$, 25°C | All I/P cycling at CMOS levels. Values obtained without output loads ($I_{OUT} = 0\text{ mA}$). | | 35 | | mA |
| I_{CC4} | Average V_{CAP} Current during AutoStore Cycle | All Inputs Don't Care, $V_{CC} = \text{Max}$ Average current for duration t_{STORE} | | | 5 | mA |
| I_{SB} | V_{CC} Standby Current | $CE \geq (V_{CC} - 0.2V)$. $V_{IN} \leq 0.2V$ or $\geq (V_{CC} - 0.2V)$. Standby current level after nonvolatile cycle is complete. Inputs are static. $f = 0\text{ MHz}$. | | | 5 | mA |
| $I_{IX}^{[10]}$ | Input Leakage Current (except HSB) | $V_{CC} = \text{Max}$, $V_{SS} \leq V_{IN} \leq V_{CC}$ | -1 | | +1 | μA |
| | Input Leakage Current (for HSB) | $V_{CC} = \text{Max}$, $V_{SS} \leq V_{IN} \leq V_{CC}$ | -100 | | +1 | μA |
| I_{OZ} | Off-State Output Leakage Current | $V_{CC} = \text{Max}$, $V_{SS} \leq V_{OUT} \leq V_{CC}$. CE or $OE \geq V_{IH}$ or $BHE/BLE \geq V_{IH}$ or $WE \leq V_{IL}$ | -1 | | +1 | μA |
| V_{IH} | Input HIGH Voltage | | 2.0 | | $V_{CC} + 0.5$ | V |
| V_{IL} | Input LOW Voltage | | $V_{SS} - 0.5$ | | 0.8 | V |
| V_{OH} | Output HIGH Voltage | $I_{OUT} = -2\text{ mA}$ | 2.4 | | | V |
| V_{OL} | Output LOW Voltage | $I_{OUT} = 4\text{ mA}$ | | | 0.4 | V |
| V_{CAP} | Storage Capacitor | Between V_{CAP} pin and V_{SS} , 5V Rated | 61 | 68 | 180 | μF |

Notes

9. Typical values are at 25°C , $V_{CC} = V_{CC} (\text{Typ})$. Not 100% tested.

10. The HSB pin has $I_{OUT} = -2\text{ uA}$ for V_{OH} of 2.4V when both active HIGH and LOW drivers are disabled. When they are enabled standard V_{OH} and V_{OL} are valid. This parameter is characterized but not tested.

Data Retention and Endurance

| Parameter | Description | Min | Unit |
|-------------------|-----------------------------|-----|-------|
| DATA _R | Data Retention | 20 | Years |
| NV _C | Nonvolatile STORE Operation | 200 | K |

Capacitance

In the following table, the capacitance parameters are listed.^[11]

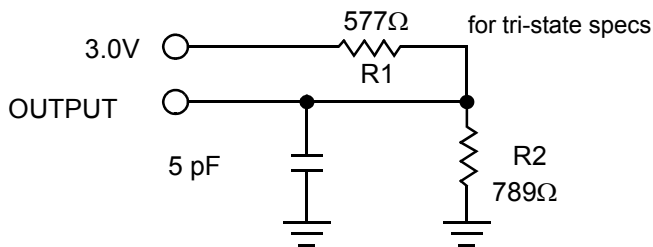
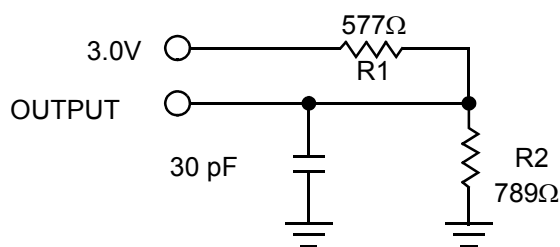
| Parameter | Description | Test Conditions | Max | Unit |
|------------------|--------------------|---|-----|------|
| C _{IN} | Input Capacitance | T _A = 25°C, f = 1 MHz, | 7 | pF |
| C _{OUT} | Output Capacitance | V _{CC} = V _{CC} (Typ) | 7 | pF |

Thermal Resistance

In the following table, the thermal resistance parameters are listed.^[11]

| Parameter | Description | Test Conditions | 48-FBGA | 44-TSOP II | 54-TSOP II | Unit |
|-----------------|--|---|---------|------------|------------|------|
| Θ _{JA} | Thermal Resistance (Junction to Ambient) | Test conditions follow standard test methods and procedures for measuring thermal impedance, in accordance with EIA/JESD51. | 28.82 | 31.11 | 30.73 | °C/W |
| Θ _{JC} | Thermal Resistance (Junction to Case) | | 7.84 | 5.56 | 6.08 | °C/W |

Figure 5. AC Test Loads



AC Test Conditions

Input Pulse Levels0V to 3V
 Input Rise and Fall Times (10% - 90%) ≤3 ns
 Input and Output Timing Reference Levels 1.5V

Note

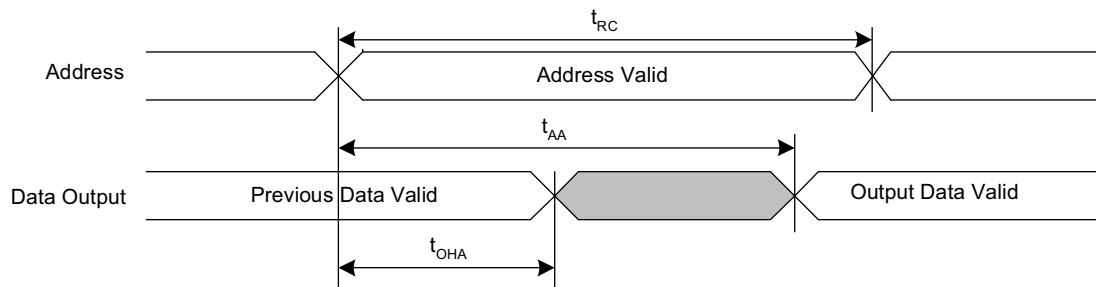
11. These parameters are guaranteed by design but not tested.

AC Switching Characteristics

| Parameters | | Description | 20 ns | | 25 ns | | 45 ns | | Unit |
|---|------------------|-----------------------------------|-------|-----|-------|-----|-------|-----|------|
| Cypress Parameters | Alt Parameters | | Min | Max | Min | Max | Min | Max | |
| SRAM Read Cycle | | | | | | | | | |
| t _{ACE} | t _{ACS} | Chip Enable Access Time | | 20 | | 25 | | 45 | ns |
| t _{RC} ^[12] | t _{RC} | Read Cycle Time | 20 | | 25 | | 45 | | ns |
| t _{AA} ^[13] | t _{AA} | Address Access Time | | 20 | | 25 | | 45 | ns |
| t _{DOE} | t _{OE} | Output Enable to Data Valid | | 10 | | 12 | | 20 | ns |
| t _{OHA} ^[13] | t _{OH} | Output Hold After Address Change | 3 | | 3 | | 3 | | ns |
| t _{LZCE} ^[11, 14] | t _{LZ} | Chip Enable to Output Active | 3 | | 3 | | 3 | | ns |
| t _{HZCE} ^[11, 14] | t _{HZ} | Chip Disable to Output Inactive | | 8 | | 10 | | 15 | ns |
| t _{LZOE} ^[11, 14] | t _{OLZ} | Output Enable to Output Active | 0 | | 0 | | 0 | | ns |
| t _{HZOE} ^[11, 14] | t _{OHZ} | Output Disable to Output Inactive | | 8 | | 10 | | 15 | ns |
| t _{PU} ^[11] | t _{PA} | Chip Enable to Power Active | 0 | | 0 | | 0 | | ns |
| t _{PD} ^[11] | t _{PS} | Chip Disable to Power Standby | | 20 | | 25 | | 45 | ns |
| t _{DBE} | - | Byte Enable to Data Valid | | 10 | | 12 | | 20 | ns |
| t _{LZBE} ^[11] | - | Byte Enable to Output Active | 0 | | 0 | | 0 | | ns |
| t _{HZBE} ^[11] | - | Byte Disable to Output Inactive | | 8 | | 10 | | 15 | ns |
| SRAM Write Cycle | | | | | | | | | |
| t _{WC} | t _{WC} | Write Cycle Time | 20 | | 25 | | 45 | | ns |
| t _{PWE} | t _{WP} | Write Pulse Width | 15 | | 20 | | 30 | | ns |
| t _{SCE} | t _{CW} | Chip Enable To End of Write | 15 | | 20 | | 30 | | ns |
| t _{SD} | t _{DW} | Data Setup to End of Write | 8 | | 10 | | 15 | | ns |
| t _{HD} | t _{DH} | Data Hold After End of Write | 0 | | 0 | | 0 | | ns |
| t _{AW} | t _{AW} | Address Setup to End of Write | 15 | | 20 | | 30 | | ns |
| t _{SA} | t _{AS} | Address Setup to Start of Write | 0 | | 0 | | 0 | | ns |
| t _{HA} | t _{WR} | Address Hold After End of Write | 0 | | 0 | | 0 | | ns |
| t _{HZWE} ^[11, 14, 15] | t _{WZ} | Write Enable to Output Disable | | 8 | | 10 | | 15 | ns |
| t _{LZWE} ^[11, 14] | t _{OW} | Output Active after End of Write | 3 | | 3 | | 3 | | ns |
| t _{BW} | - | Byte Enable to End of Write | 15 | | 20 | | 30 | | ns |

Switching Waveforms

Figure 6. SRAM Read Cycle #1: Address Controlled^[12, 13, 16]



Notes

12. WE must be HIGH during SRAM read cycles.
13. Device is continuously selected with CE, OE and BHE / BLE LOW.
14. Measured ± 200 mV from steady state output voltage.
15. If WE is LOW when CE goes LOW, the outputs remain in the high impedance state.
16. HSB must remain HIGH during read and write cycles.

Figure 7. SRAM Read Cycle #2: $\overline{\text{CE}}$ and $\overline{\text{OE}}$ Controlled^[3, 12, 16]

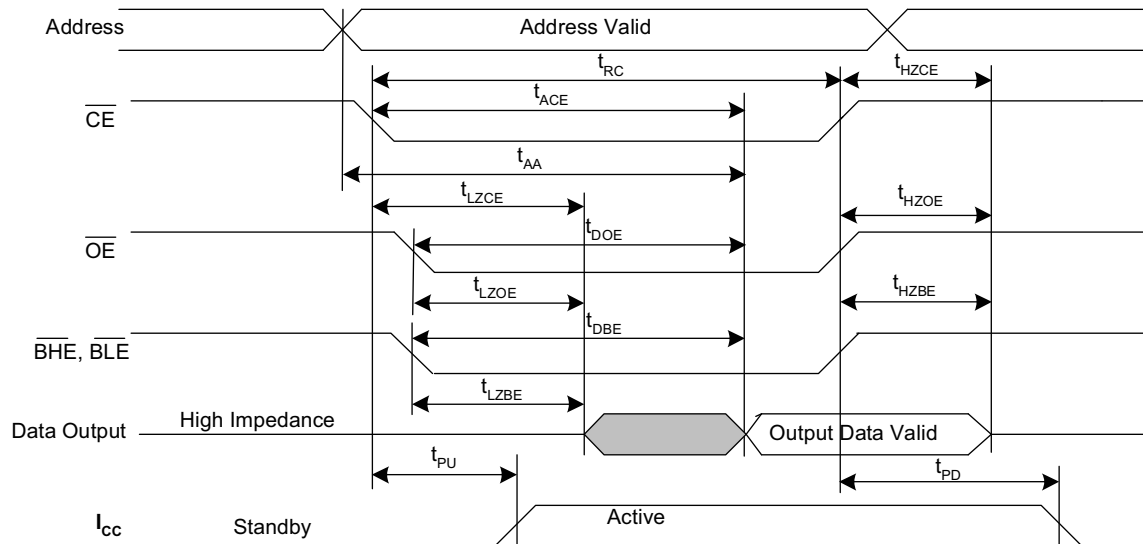
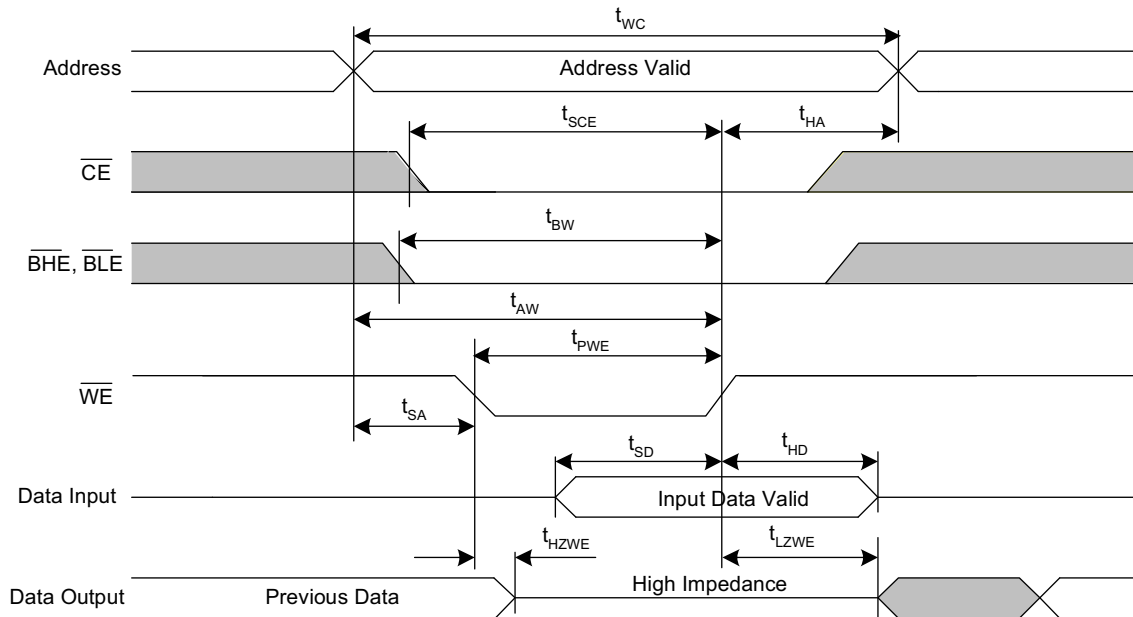


Figure 8. SRAM Write Cycle #1: $\overline{\text{WE}}$ Controlled^[3, 15, 16, 17]



Note
17. $\overline{\text{CE}}$ or $\overline{\text{WE}}$ must be $\geq V_{\text{IH}}$ during address transitions.

Figure 9. SRAM Write Cycle #2: $\overline{\text{CE}}$ Controlled^[3, 15, 16, 17]

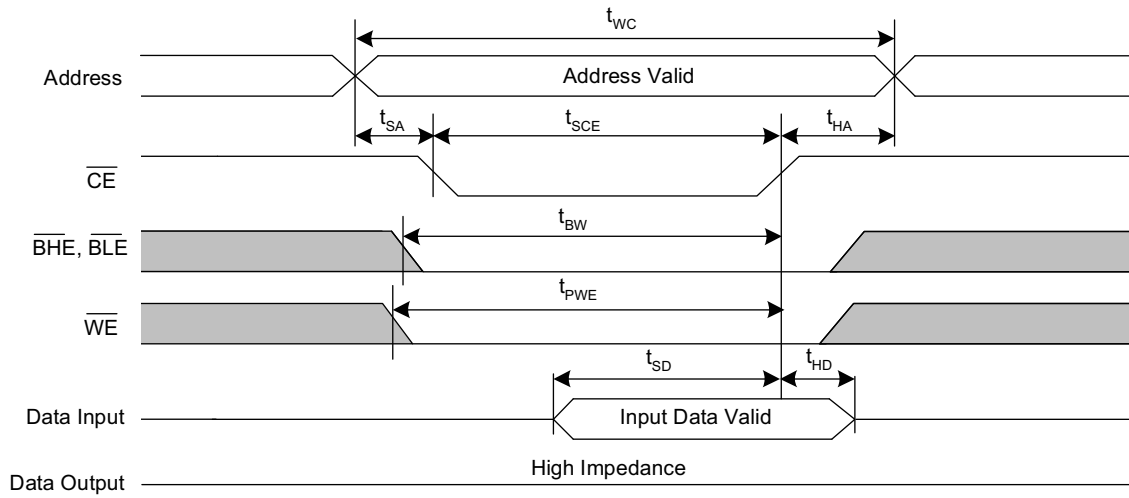
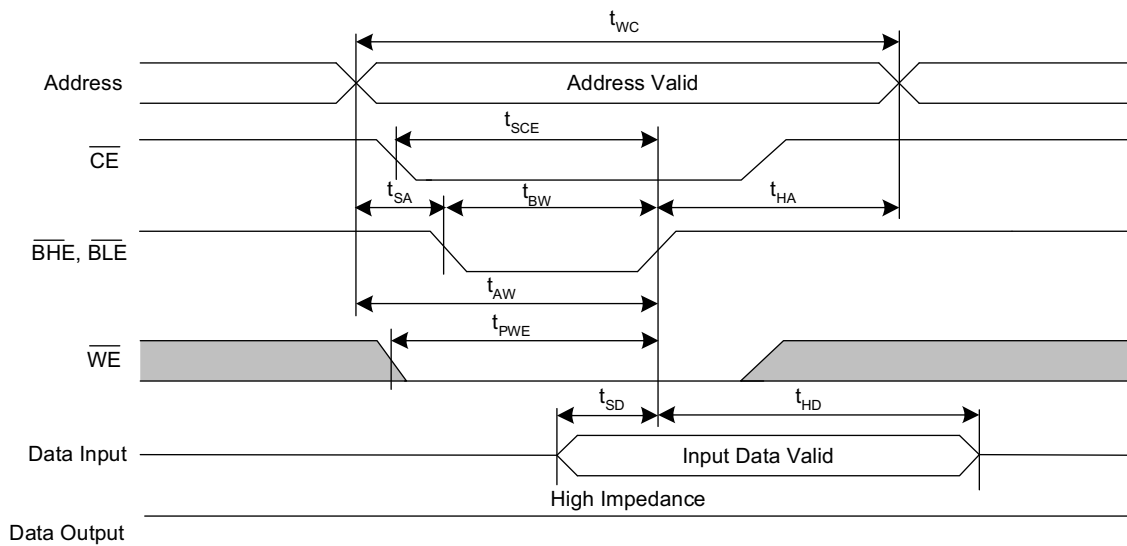


Figure 10. SRAM Write Cycle #3: $\overline{\text{BHE}}$ and $\overline{\text{BLE}}$ Controlled^[3, 15, 16, 17]

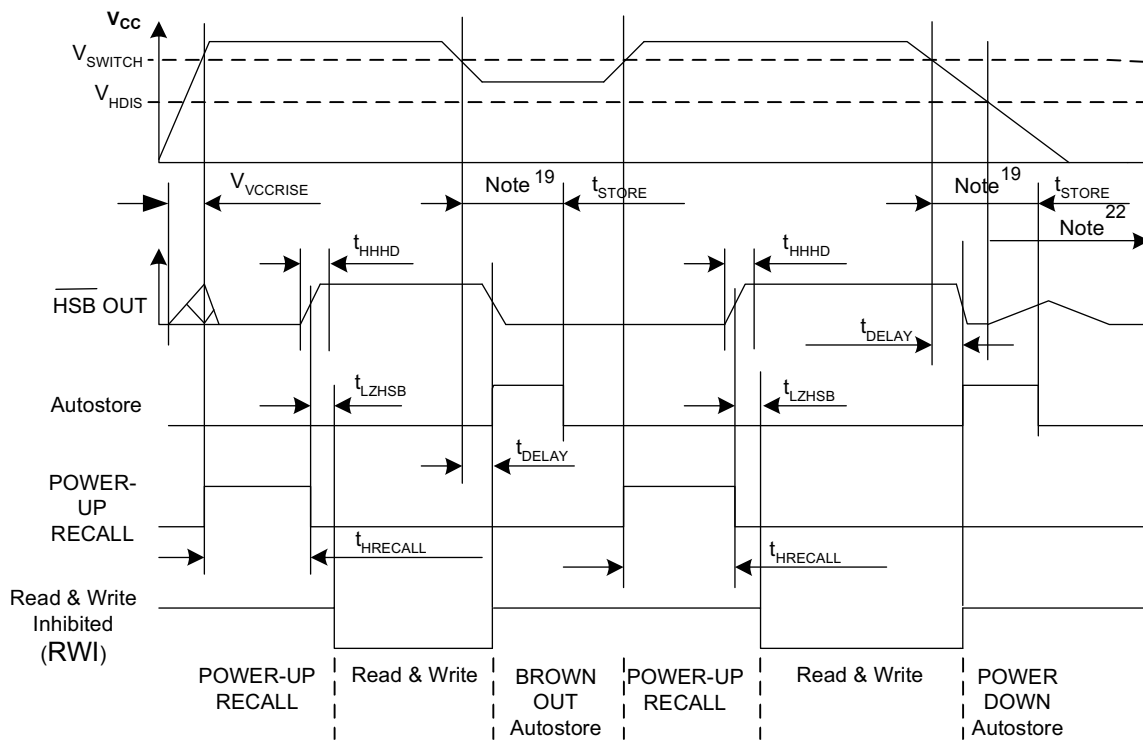


AutoStore/Power Up RECALL

| Parameters | Description | 20 ns | | 25 ns | | 45 ns | | Unit |
|-----------------------|-------------------------------------|-------|------|-------|------|-------|------|---------|
| | | Min | Max | Min | Max | Min | Max | |
| $t_{HRECALL}^{[18]}$ | Power Up RECALL Duration | | 20 | | 20 | | 20 | ms |
| $t_{STORE}^{[19]}$ | STORE Cycle Duration | | 8 | | 8 | | 8 | ms |
| $t_{DELAY}^{[20]}$ | Time Allowed to Complete SRAM Cycle | | 20 | | 25 | | 25 | ns |
| V_{SWITCH} | Low Voltage Trigger Level | | 2.65 | | 2.65 | | 2.65 | V |
| $t_{VCCRRISE}^{[11]}$ | V_{CC} Rise Time | 150 | | 150 | | 150 | | μ s |
| $V_{HDIS}^{[11]}$ | HSB Output Disable Voltage | | 1.9 | | 1.9 | | 1.9 | V |
| $t_{LZHSB}^{[11]}$ | HSB To Output Active Time | | 5 | | 5 | | 5 | μ s |
| $t_{HHHD}^{[11]}$ | HSB High Active Time | | 500 | | 500 | | 500 | ns |

Switching Waveforms

Figure 11. AutoStore or Power Up RECALL^[21]



Notes

18. $t_{HRECALL}$ starts from the time V_{CC} rises above V_{SWITCH} .
19. If an SRAM write has not taken place since the last nonvolatile cycle, no AutoStore or Hardware Store takes place.
20. On a Hardware STORE, Software Store / Recall, AutoStore Enable / Disable and AutoStore initiation, SRAM operation continues to be enabled for time t_{DELAY} .
21. Read and write cycles are ignored during STORE, RECALL, and while V_{CC} is below V_{SWITCH} .
22. HSB pin is driven HIGH to V_{CC} only by internal 100 kOhm resistor, HSB driver is disabled.

Software Controlled STORE/RECALL Cycle

In the following table, the software controlled STORE and RECALL cycle parameters are listed.^[23, 24]

| Parameters | Description | 20 ns | | 25 ns | | 45 ns | | Unit |
|--------------|------------------------------------|-------|-----|-------|-----|-------|-----|---------|
| | | Min | Max | Min | Max | Min | Max | |
| t_{RC} | STORE/RECALL Initiation Cycle Time | 20 | | 25 | | 45 | | ns |
| t_{SA} | Address Setup Time | 0 | | 0 | | 0 | | ns |
| t_{CW} | Clock Pulse Width | 15 | | 20 | | 30 | | ns |
| t_{HA} | Address Hold Time | 0 | | 0 | | 0 | | ns |
| t_{RECALL} | RECALL Duration | | 200 | | 200 | | 200 | μ s |

Switching Waveforms

Figure 12. \overline{CE} and \overline{OE} Controlled Software STORE/RECALL Cycle^[24]

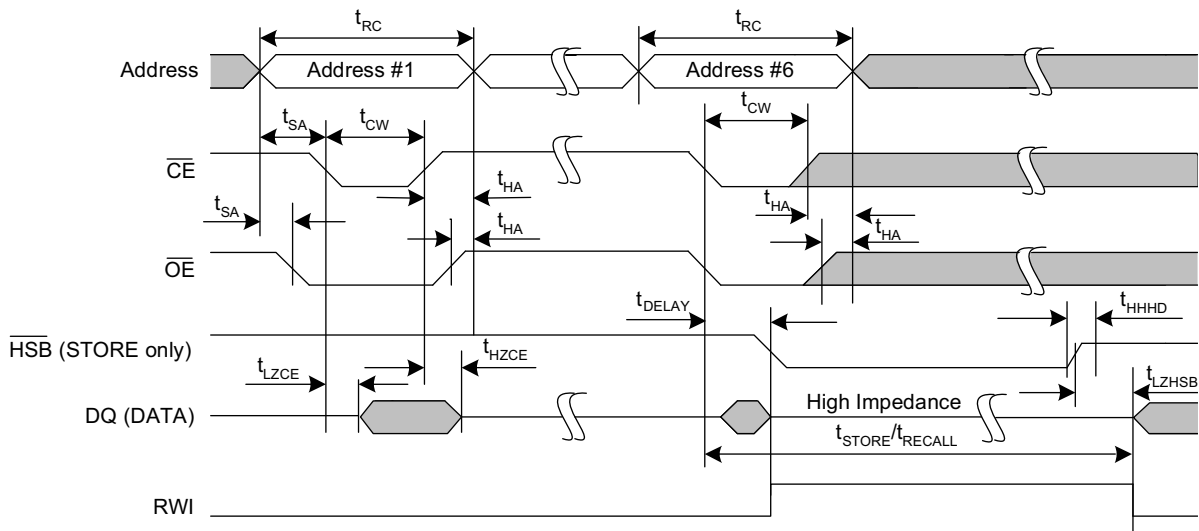
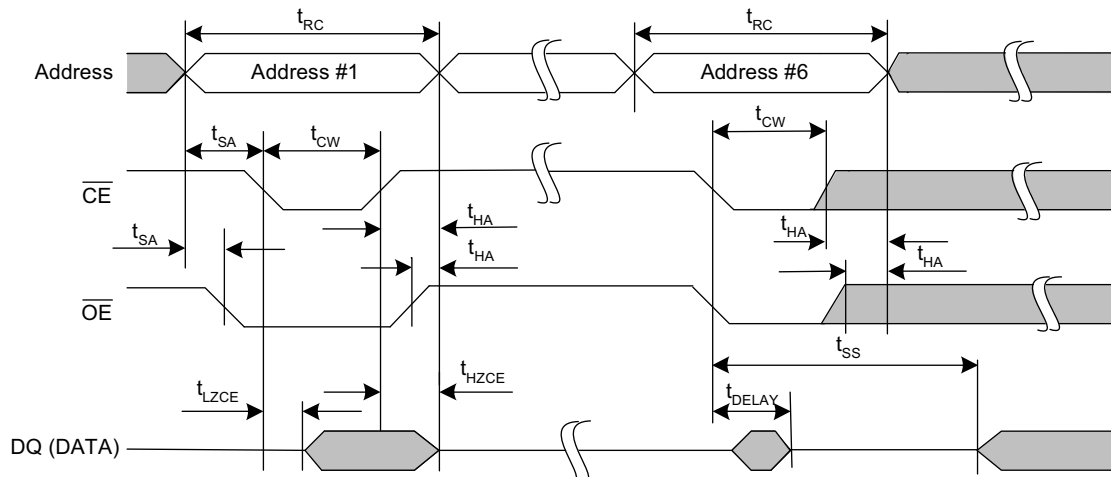


Figure 13. AutoStore Enable/Disable Cycle



Notes

23. The software sequence is clocked with \overline{CE} controlled or \overline{OE} controlled reads.

24. The six consecutive addresses must be read in the order listed in Table 2 on page 5. \overline{WE} must be HIGH during all six consecutive cycles.

Hardware STORE Cycle

| Parameters | Description | 20 ns | | 25 ns | | 45 ns | | Unit |
|----------------------------|--|-------|-----|-------|-----|-------|-----|---------------|
| | | Min | Max | Min | Max | Min | Max | |
| t_{DHSB} | HSB To Output Active Time when write latch not set | | 20 | | 25 | | 25 | ns |
| t_{PHSB} | Hardware STORE Pulse Width | 15 | | 15 | | 15 | | ns |
| $t_{\text{SS}}^{[25, 26]}$ | Soft Sequence Processing Time | | 100 | | 100 | | 100 | μs |

Switching Waveforms

Figure 14. Hardware STORE Cycle^[19]

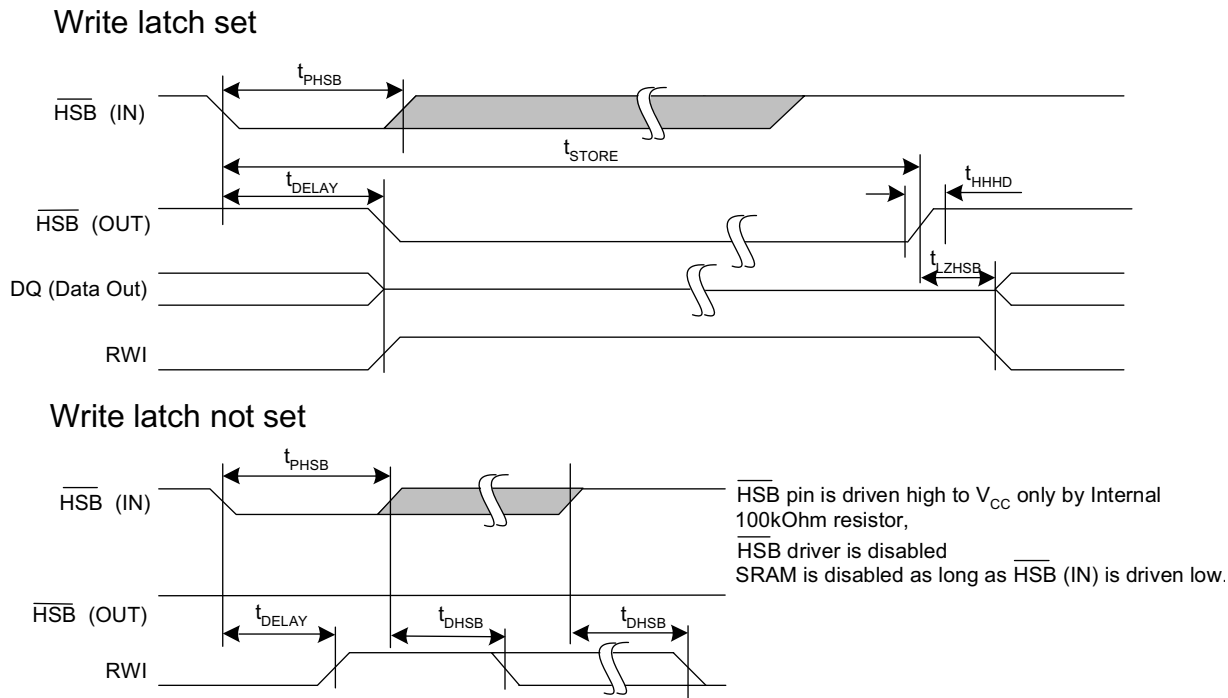
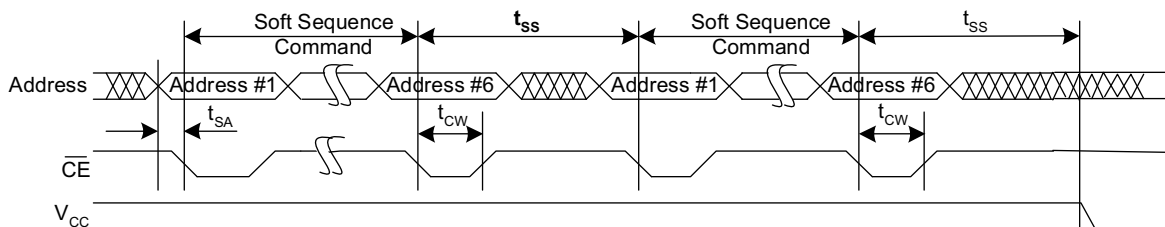


Figure 15. Soft Sequence Processing^[25, 26]



Notes

25. This is the amount of time it takes to take action on a soft sequence command. V_{CC} power must remain HIGH to effectively register command.
 26. Commands such as STORE and RECALL lock out I/O until operation is complete which further increases this time. See the specific command.

Truth Table For SRAM Operations

HSB should remain HIGH for SRAM Operations.

For x8 Configuration

| $\overline{\text{CE}}$ | $\overline{\text{WE}}$ | $\overline{\text{OE}}$ | Inputs/Outputs ^[2] | Mode | Power |
|------------------------|------------------------|------------------------|---|---------------------|---------|
| H | X | X | High Z | Deselect/Power down | Standby |
| L | H | L | Data Out (DQ ₀ –DQ ₇); | Read | Active |
| L | H | H | High Z | Output Disabled | Active |
| L | L | X | Data in (DQ ₀ –DQ ₇); | Write | Active |

For x16 Configuration

| $\overline{\text{CE}}$ | $\overline{\text{WE}}$ | $\overline{\text{OE}}$ | $\overline{\text{BHE}}$ ^[3] | $\overline{\text{BLE}}$ ^[3] | Inputs/Outputs ^[2] | Mode | Power |
|------------------------|------------------------|------------------------|--|--|--|---------------------|---------|
| H | X | X | X | X | High-Z | Deselect/Power down | Standby |
| L | X | X | H | H | High-Z | Output Disabled | Active |
| L | H | L | L | L | Data Out (DQ ₀ –DQ ₁₅) | Read | Active |
| L | H | L | H | L | Data Out (DQ ₀ –DQ ₇); DQ ₈ –DQ ₁₅ in High-Z | Read | Active |
| L | H | L | L | H | Data Out (DQ ₈ –DQ ₁₅); DQ ₀ –DQ ₇ in High-Z | Read | Active |
| L | H | H | L | L | High-Z | Output Disabled | Active |
| L | H | H | H | L | High-Z | Output Disabled | Active |
| L | H | H | L | H | High-Z | Output Disabled | Active |
| L | L | X | L | L | Data In (DQ ₀ –DQ ₁₅) | Write | Active |
| L | L | X | H | L | Data In (DQ ₀ –DQ ₇); DQ ₈ –DQ ₁₅ in High-Z | Write | Active |
| L | L | X | L | H | Data In (DQ ₈ –DQ ₁₅); DQ ₀ –DQ ₇ in High-Z | Write | Active |

Ordering Information

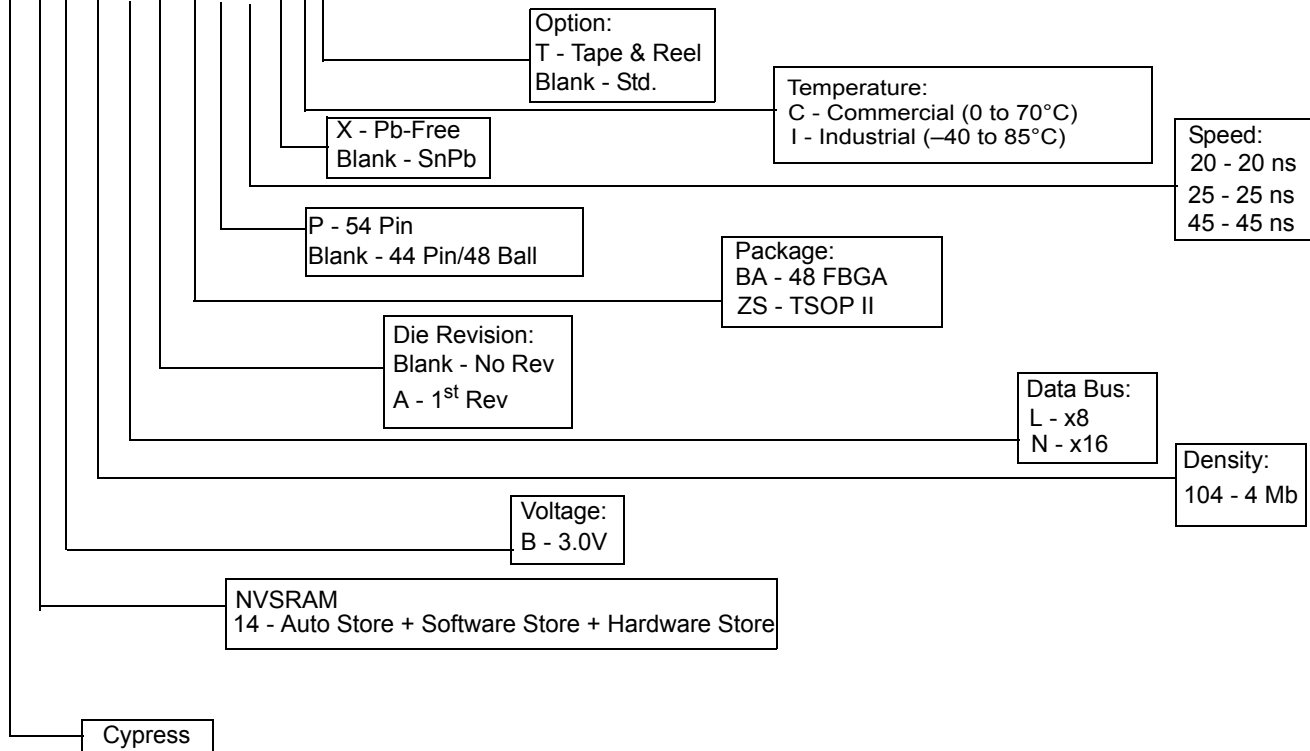
| Speed (ns) | Ordering Code | Package Diagram | Package Type | Operating Range |
|------------|---------------------|-----------------|----------------|-----------------|
| 20 | CY14B104LA-ZS20XCT | 51-85087 | 44-pin TSOP II | Commercial |
| | CY14B104LA-ZS20XC | 51-85087 | 44-pin TSOP II | |
| | CY14B104LA-ZS20XIT | 51-85087 | 44-pin TSOP II | Industrial |
| | CY14B104LA-ZS20XI | 51-85087 | 44-pin TSOP II | |
| | CY14B104LA-BA20XCT | 51-85128 | 48-ball FBGA | Commercial |
| | CY14B104LA-BA20XC | 51-85128 | 48-ball FBGA | |
| | CY14B104LA-BA20XIT | 51-85128 | 48-ball FBGA | Industrial |
| | CY14B104LA-BA20XI | 51-85128 | 48-ball FBGA | |
| | CY14B104NA-ZS20XCT | 51-85087 | 44-pin TSOP II | Commercial |
| | CY14B104NA-ZS20XC | 51-85087 | 44-pin TSOP II | |
| | CY14B104NA-ZS20XIT | 51-85087 | 44-pin TSOP II | Industrial |
| | CY14B104NA-ZS20XI | 51-85087 | 44-pin TSOP II | |
| | CY14B104NA-BA20XCT | 51-85128 | 48-ball FBGA | Commercial |
| | CY14B104NA-BA20XC | 51-85128 | 48-ball FBGA | |
| | CY14B104NA-BA20XIT | 51-85128 | 48-ball FBGA | Industrial |
| | CY14B104NA-BA20XI | 51-85128 | 48-ball FBGA | |
| | CY14B104NA-ZSP20XCT | 51-85160 | 54-pin TSOP II | Commercial |
| | CY14B104NA-ZSP20XC | 51-85160 | 54-pin TSOP II | |
| | CY14B104NA-ZSP20XIT | 51-85160 | 54-pin TSOP II | Industrial |
| | CY14B104NA-ZSP20XI | 51-85160 | 54-pin TSOP II | |
| 25 | CY14B104LA-ZS25XCT | 51-85087 | 44-pin TSOP II | Commercial |
| | CY14B104LA-ZS25XC | 51-85087 | 44-pin TSOP II | |
| | CY14B104LA-ZS25XIT | 51-85087 | 44-pin TSOP II | Industrial |
| | CY14B104LA-ZS25XI | 51-85087 | 44-pin TSOP II | |
| | CY14B104LA-BA25XCT | 51-85128 | 48-ball FBGA | Commercial |
| | CY14B104LA-BA25XC | 51-85128 | 48-ball FBGA | |
| | CY14B104LA-BA25XIT | 51-85128 | 48-ball FBGA | Industrial |
| | CY14B104LA-BA25XI | 51-85128 | 48-ball FBGA | |
| | CY14B104NA-ZS25XCT | 51-85087 | 44-pin TSOP II | Commercial |
| | CY14B104NA-ZS25XC | 51-85087 | 44-pin TSOP II | |
| | CY14B104NA-ZS25XIT | 51-85087 | 44-pin TSOP II | Industrial |
| | CY14B104NA-ZS25XI | 51-85087 | 44-pin TSOP II | |
| | CY14B104NA-BA25XCT | 51-85128 | 48-ball FBGA | Commercial |
| | CY14B104NA-BA25XC | 51-85128 | 48-ball FBGA | |
| | CY14B104NA-BA25XIT | 51-85128 | 48-ball FBGA | Industrial |
| | CY14B104NA-BA25XI | 51-85128 | 48-ball FBGA | |
| | CY14B104NA-BA25I | 51-85128 | 48-ball FBGA | |
| | CY14B104NA-ZSP25XCT | 51-85160 | 54-pin TSOP II | Commercial |
| | CY14B104NA-ZSP25XC | 51-85160 | 54-pin TSOP II | |
| | CY14B104NA-ZSP25XIT | 51-85160 | 54-pin TSOP II | Industrial |
| | CY14B104NA-ZSP25XI | 51-85160 | 54-pin TSOP II | |

Ordering Information (continued)

| Speed (ns) | Ordering Code | Package Diagram | Package Type | Operating Range |
|------------|---------------------|-----------------|----------------|-----------------|
| 45 | CY14B104LA-ZS45XCT | 51-85087 | 44-pin TSOP II | Commercial |
| | CY14B104LA-ZS45XC | 51-85087 | 44-pin TSOP II | |
| | CY14B104LA-ZS45XIT | 51-85087 | 44-pin TSOP II | Industrial |
| | CY14B104LA-ZS45XI | 51-85087 | 44-pin TSOP II | |
| | CY14B104LA-BA45XCT | 51-85128 | 48-ball FBGA | Commercial |
| | CY14B104LA-BA45XC | 51-85128 | 48-ball FBGA | |
| | CY14B104LA-BA45XIT | 51-85128 | 48-ball FBGA | Industrial |
| | CY14B104LA-BA45XI | 51-85128 | 48-ball FBGA | |
| | CY14B104NA-ZS45XCT | 51-85087 | 44-pin TSOP II | Commercial |
| | CY14B104NA-ZS45XC | 51-85087 | 44-pin TSOP II | |
| | CY14B104NA-ZS45XIT | 51-85087 | 44-pin TSOP II | Industrial |
| | CY14B104NA-ZS45XI | 51-85087 | 44-pin TSOP II | |
| | CY14B104NA-BA45XCT | 51-85128 | 48-ball FBGA | Commercial |
| | CY14B104NA-BA45XC | 51-85128 | 48-ball FBGA | |
| | CY14B104NA-BA45XIT | 51-85128 | 48-ball FBGA | Industrial |
| | CY14B104NA-BA45XI | 51-85128 | 48-ball FBGA | |
| | CY14B104NA-ZSP45XCT | 51-85160 | 54-pin TSOP II | Commercial |
| | CY14B104NA-ZSP45XC | 51-85160 | 54-pin TSOP II | |
| | CY14B104NA-ZSP45XIT | 51-85160 | 54-pin TSOP II | Industrial |
| | CY14B104NA-ZSP45XI | 51-85160 | 54-pin TSOP II | |

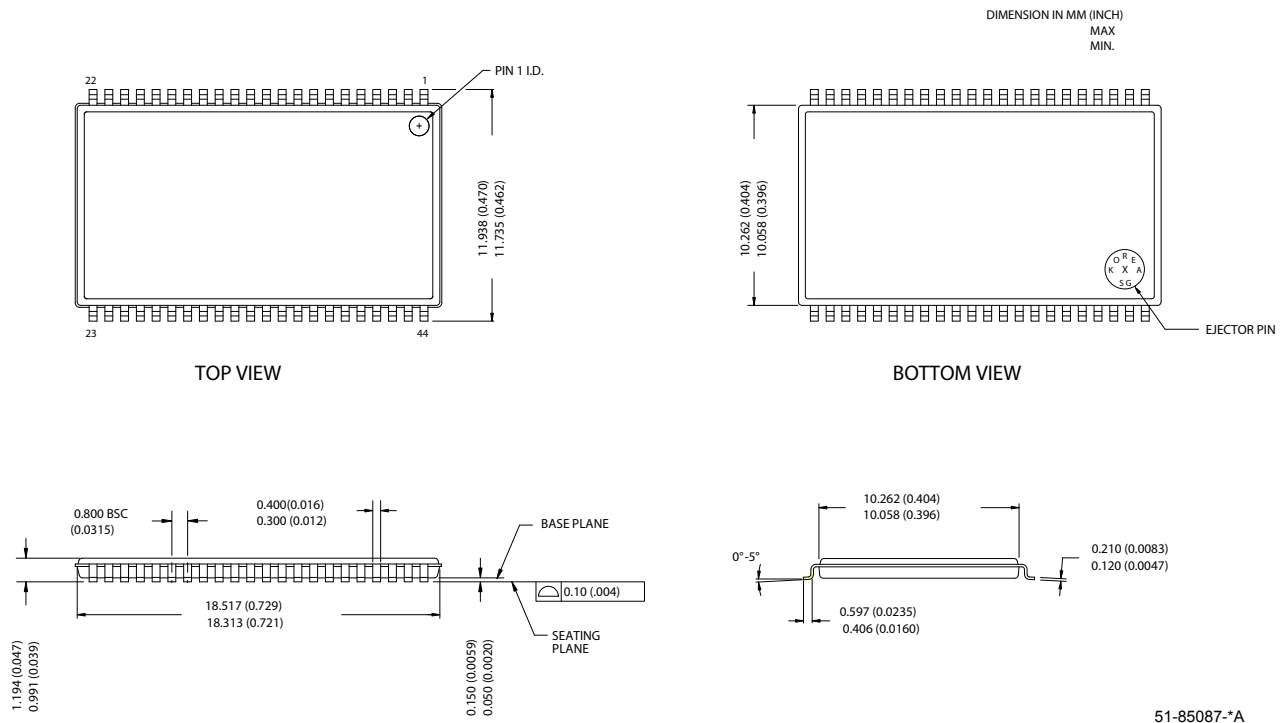
Part Numbering Nomenclature

CY 14 B 104 L A -ZS P 20 X C T



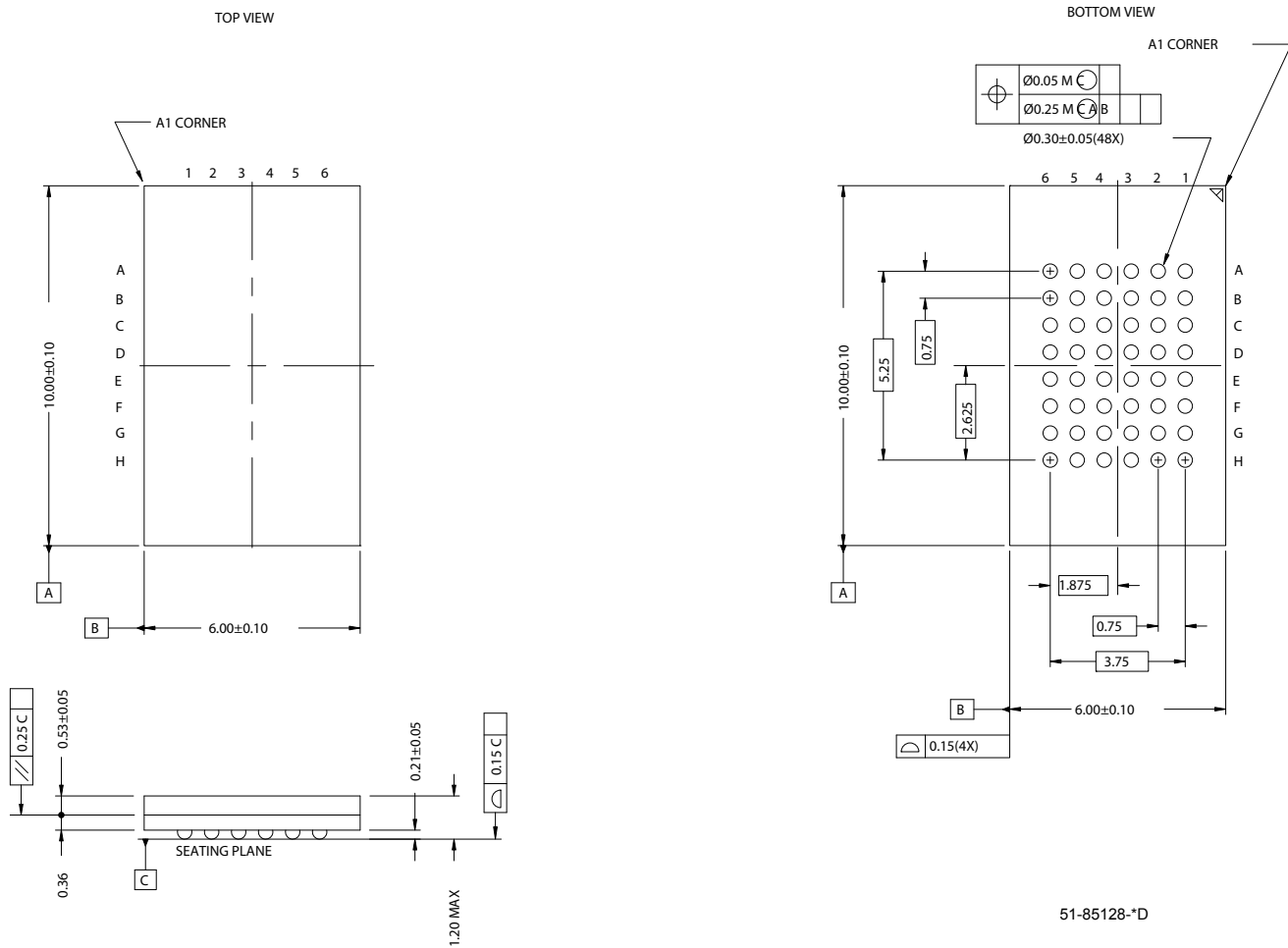
Package Diagrams

Figure 16. 44-Pin TSOP II (51-85087)



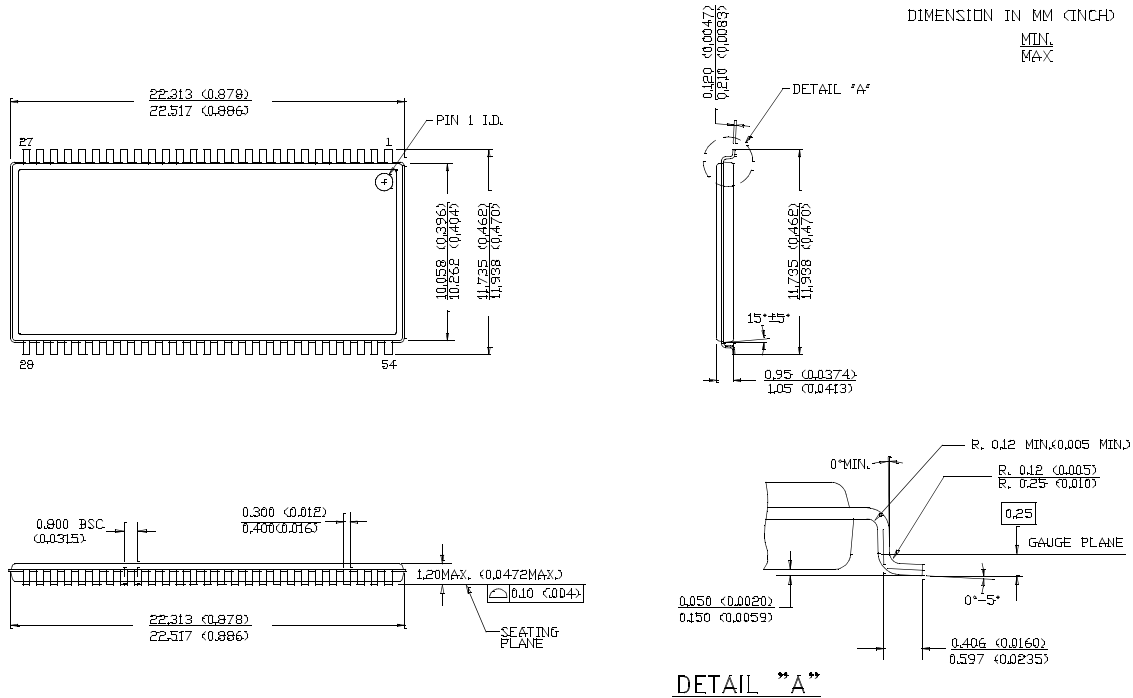
Package Diagrams (continued)

Figure 17. 48-Ball FBGA - 6 mm x 10 mm x 1.2 mm (51-85128)



Package Diagrams (continued)

Figure 18. 54-Pin TSOP II (51-85160)



51-85160-**

Document History Page

| Document Title: CY14B104LA, CY14B104NA 4 Mbit (512K x 8/256K x 16) nvSRAM Document Number: 001-49918 | | | | |
|---|---------|-----------------|-----------------|---|
| Rev. | ECN No. | Orig. of Change | Submission Date | Description of Change |
| ** | 2606696 | GVCH/PYRS | 11/13/08 | New Data Sheet |
| *A | 2672700 | GVCH/PYRS | 03/12/09 | Added best practices Added CY14B104NA-BA25I part number Added footnote12 for HZ/LZ parameters |
| *B | 2710274 | GVCH/AESA | 05/22/2009 | Moved data sheet status from Preliminary to Final Updated AutoStore operation Updated I _{SB} test condition Updated footnote 9 Referenced footnote 12 to V _{CCRISE} , t _{HHD} and t _{LZHSB} parameters Updated V _{HDS} parameter description Updated figure 12 |

Sales, Solutions, and Legal Information

Worldwide Sales and Design Support

Cypress maintains a worldwide network of offices, solution centers, manufacturer's representatives, and distributors. To find the office closest to you, visit us at cypress.com/sales.

Products

| | |
|------------------|--|
| PSoC | psoc.cypress.com |
| Clocks & Buffers | clocks.cypress.com |
| Wireless | wireless.cypress.com |
| Memories | memory.cypress.com |
| Image Sensors | image.cypress.com |

PSoC Solutions

| | |
|-----------------------|--|
| General | psoc.cypress.com/solutions |
| Low Power/Low Voltage | psoc.cypress.com/low-power |
| Precision Analog | psoc.cypress.com/precision-analog |
| LCD Drive | psoc.cypress.com/lcd-drive |
| CAN 2.0b | psoc.cypress.com/can |
| USB | psoc.cypress.com/usb |

© Cypress Semiconductor Corporation, 2008-2009. The information contained herein is subject to change without notice. Cypress Semiconductor Corporation assumes no responsibility for the use of any circuitry other than circuitry embodied in a Cypress product. Nor does it convey or imply any license under patent or other rights. Cypress products are not warranted nor intended to be used for medical, life support, life saving, critical control or safety applications, unless pursuant to an express written agreement with Cypress. Furthermore, Cypress does not authorize its products for use as critical components in life-support systems where a malfunction or failure may reasonably be expected to result in significant injury to the user. The inclusion of Cypress products in life-support systems application implies that the manufacturer assumes all risk of such use and in doing so indemnifies Cypress against all charges.

Any Source Code (software and/or firmware) is owned by Cypress Semiconductor Corporation (Cypress) and is protected by and subject to worldwide patent protection (United States and foreign), United States copyright laws and international treaty provisions. Cypress hereby grants to licensee a personal, non-exclusive, non-transferable license to copy, use, modify, create derivative works of, and compile the Cypress Source Code and derivative works for the sole purpose of creating custom software and or firmware in support of licensee product to be used only in conjunction with a Cypress integrated circuit as specified in the applicable agreement. Any reproduction, modification, translation, compilation, or representation of this Source Code except as specified above is prohibited without the express written permission of Cypress.

Disclaimer: CYPRESS MAKES NO WARRANTY OF ANY KIND, EXPRESS OR IMPLIED, WITH REGARD TO THIS MATERIAL, INCLUDING, BUT NOT LIMITED TO, THE IMPLIED WARRANTIES OF MERCHANTABILITY AND FITNESS FOR A PARTICULAR PURPOSE. Cypress reserves the right to make changes without further notice to the materials described herein. Cypress does not assume any liability arising out of the application or use of any product or circuit described herein. Cypress does not authorize its products for use as critical components in life-support systems where a malfunction or failure may reasonably be expected to result in significant injury to the user. The inclusion of Cypress' product in a life-support systems application implies that the manufacturer assumes all risk of such use and in doing so indemnifies Cypress against all charges.

Use may be limited by and subject to the applicable Cypress software license agreement.