

FEATURES AND SPECIFICATIONS

Features and Benefits

- Sizes 3 to 40 circuits
- For 0.30mm thick FFC/FPC
- All solder tails kinked for added PCB retention

Reference Information

Packaging: Tray
Designed In: Millimeters

Electrical

Voltage: 200V
Current: 1.0A
Contact Resistance: 30mΩ max.
Dielectric Withstanding Voltage: 500V AC/1 min.
Insulation Resistance: 500 MΩ min.

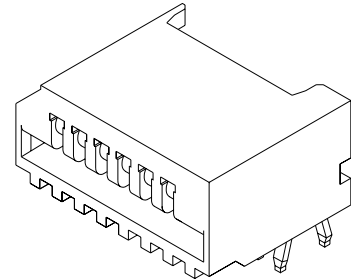
Physical

Housing: PBTP, UL 94V-0
Contact: Phosphor Bronze
Plating: Tin
Temperature: -40 to +85°C

molex® 1.25mm (.049") Pitch FFC/FPC Connector

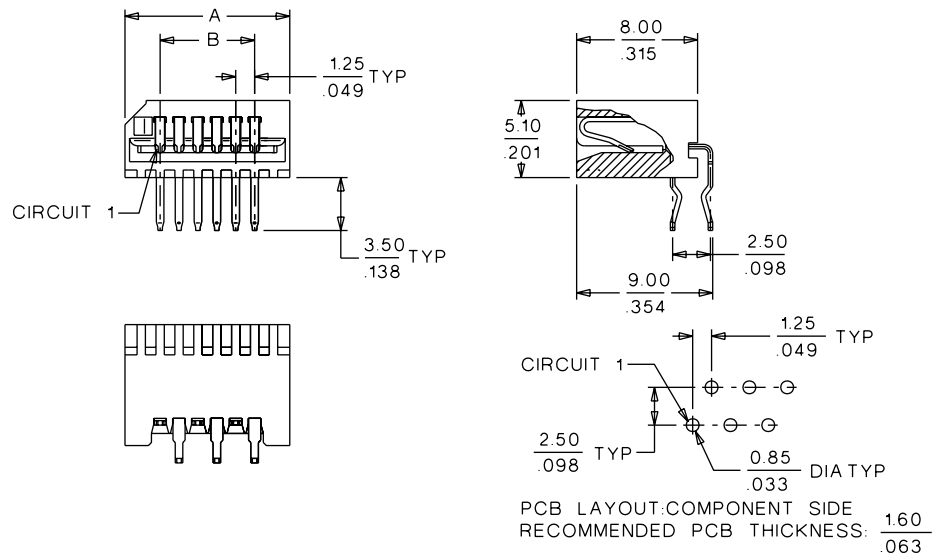
52044

Right Angle, Non-ZIF Top Contact Style



FFC/FPC Connectors

F



ORDERING INFORMATION AND DIMENSIONS

| Circuits | Order No. | Dimension | |
|----------|------------|--------------|--------------|
| | | A | B |
| 3 | 52044-0345 | 7.15 (.281) | 2.50 (.098) |
| 4 | 52044-0445 | 8.40 (.331) | 3.75 (.147) |
| 5 | 52044-0545 | 9.65 (.380) | 5.00 (.196) |
| 6 | 52044-0645 | 10.90 (.429) | 6.25 (.246) |
| 7 | 52044-0745 | 12.15 (.478) | 7.50 (.295) |
| 8 | 52044-0845 | 13.40 (.528) | 8.75 (.344) |
| 9 | 52044-0945 | 14.65 (.577) | 10.00 (.393) |
| 10 | 52044-1045 | 15.90 (.626) | 11.25 (.442) |
| 11 | 52044-1145 | 17.15 (.675) | 12.50 (.492) |
| 12 | 52044-1245 | 18.40 (.724) | 13.75 (.541) |
| 13 | 52044-1345 | 19.65 (.774) | 15.00 (.590) |
| 14 | 52044-1445 | 20.90 (.823) | 16.25 (.639) |
| 15 | 52044-1545 | 22.15 (.872) | 17.50 (.688) |

| Circuits | Order No. | Dimension | |
|----------|------------|---------------|---------------|
| | | A | B |
| 16 | 52044-1645 | 23.40 (.921) | 18.75 (.738) |
| 17 | 52044-1745 | 24.65 (.970) | 20.00 (.787) |
| 18 | 52044-1845 | 25.90 (1.020) | 21.25 (.836) |
| 19 | 52044-1945 | 27.15 (1.069) | 22.50 (.885) |
| 20 | 52044-2045 | 28.40 (1.118) | 23.75 (.935) |
| 21 | 52044-2145 | 29.65 (1.167) | 25.00 (.984) |
| 22 | 52044-2245 | 30.90 (1.217) | 26.25 (1.033) |
| 23 | 52044-2345 | 32.15 (1.266) | 27.50 (1.082) |
| 24 | 52044-2445 | 33.40 (1.314) | 28.75 (1.131) |
| 25 | 52044-2545 | 34.65 (1.364) | 30.00 (1.181) |
| 26 | 52044-2645 | 35.90 (1.413) | 31.25 (1.230) |
| 27 | 52044-2745 | 37.15 (1.463) | 32.50 (1.279) |
| 28 | 52044-2845 | 38.40 (1.512) | 33.75 (1.328) |

| Circuits | Order No. | Dimension | |
|----------|------------|---------------|---------------|
| | | A | B |
| 29 | 52044-2945 | 39.65 (1.561) | 35.00 (1.377) |
| 30 | 52044-3045 | 40.90 (1.610) | 36.25 (1.427) |
| 31 | 52044-3145 | 42.15 (1.659) | 37.50 (1.476) |
| 32 | 52044-3245 | 43.40 (1.709) | 38.75 (1.525) |
| 33 | 52044-3345 | 44.65 (1.758) | 40.00 (1.574) |
| 34 | 52044-3445 | 45.90 (1.807) | 41.25 (1.624) |
| 35 | 52044-3545 | 47.15 (1.856) | 42.50 (1.673) |
| 36 | 52044-3645 | 48.40 (1.906) | 43.75 (1.722) |
| 37 | 52044-3745 | 49.65 (1.955) | 45.00 (1.771) |
| 38 | 52044-3845 | 50.90 (2.004) | 46.25 (1.820) |
| 39 | 52044-3945 | 52.15 (2.053) | 47.50 (1.870) |
| 40 | 52044-4045 | 53.40 (2.102) | 48.75 (1.919) |

Note: For cable specification dimensions, see cable pages at end of section