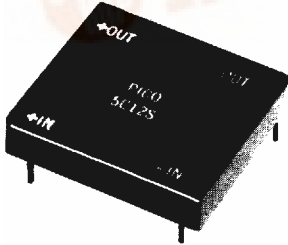


# SERIES C Hi Reliability Miniature Isolated DC-DC Converters Up to 4 Watts

## FEATURES

- Up to 4 watts output at 70°C ambient
- Encapsulated semiconductors, conservatively rated for maximum reliability
- Miniature-size (0.3" Height)
- 5 input voltage ranges 5, 12, 24, 28 and 48V DC
- 100 megohm @ 500V DC
- Single and dual isolated outputs
- No heat sink required

This series of unregulated DC-DC converters are produced in an miniaturized encapsulated package. 68 different models are available. The units feature single and isolated dual outputs. They will operate over the temperature range of -25°C to +70°C. No heat sink is required.

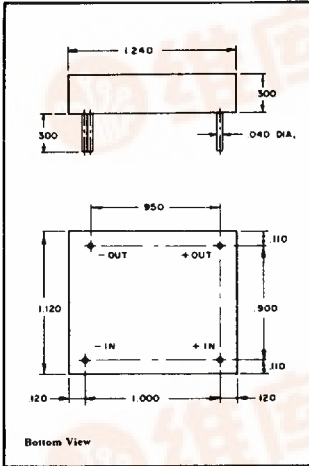


**OPTIONS AVAILABLE**

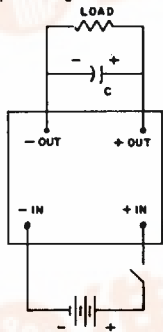
- Expanded operating temp. (-55°C to +85°C)
- Stabilization Bake (125°C ambient)
- Temperature Cycle (-55°C to +125°C)
- Hi Temp. full power burn in (100% power, 125°C case temp)

## SERIES C - SINGLE OUTPUT

PICO PART NUMBER	INPUT VOLTAGE (V DC)	OUTPUT VOLTAGE (V DC)	MAX. LOAD CURRENT (mA)	MAX. OUTPUT POWER (watts)	EFF. @ FULL LOAD TYPICAL (%)	INPUT CURRENT FULL LOAD TYPICAL (mA)	OUTPUT VOLTAGE RIPPLE @ FULL LOAD* (Vp-p max)	NO LOAD CURRENT TYPICAL (mA)	FULL LOAD OUTPUT VOLTAGE TOLERANCE (V DC)	PRICE 1-24
5C5S	5	5	500	2.5	68	735	0.20	90	±0.25	54.46
5C9S	5	9	333	3.0	72	833	0.20	100	±0.3	54.46
5C12S	5	12	250	3.0	75	800	0.20	100	±0.4	54.46
5C15S	5	15	200	3.0	77	779	0.15	100	±0.4	54.46
5C24S	5	24	125	3.0	76	789	0.15	120	±0.5	54.46
5C28S	5	28	107	3.0	76	789	0.15	120	±0.5	54.46
5C48S	5	48	63	3.0	76	789	0.15	120	±0.7	54.46
12C5S	12	5	500	2.5	67	311	0.20	45	±0.25	54.46
12C9S	12	9	333	3.0	75	333	0.20	45	±0.3	54.46
12C12S	12	12	290	3.5	77	379	0.20	40	±0.4	54.46
12C15S	12	15	266	4.0	84	396	0.15	40	±0.4	54.46
12C24S	12	24	166	4.0	81	411	0.15	45	±0.5	54.46
12C28S	12	28	143	4.0	82	407	0.15	45	±0.5	54.46
12C48S	12	48	83	4.0	81	412	0.15	45	±0.7	54.46
24C5S	24	5	500	2.5	67	155	0.20	25	±0.25	54.46
24C9S	24	9	333	3.0	73	171	0.20	25	±0.3	54.46
24C12S	24	12	290	3.5	75	194	0.20	25	±0.4	54.46
24C15S	24	15	235	3.5	79	184	0.20	25	±0.4	54.46
24C24S	24	24	166	4.0	83	200	0.20	25	±0.5	54.46
24C28S	24	28	143	4.0	83	201	0.20	25	±0.5	54.46
24C48S	24	48	83	4.0	83	201	0.20	25	±0.7	54.46
28C5S	28	5	500	2.5	67	133	0.20	25	±0.25	54.46
28C9S	28	9	333	3.0	73	147	0.20	25	±0.3	54.46
28C12S	28	12	290	3.5	75	167	0.20	25	±0.4	54.46
28C15S	28	15	235	3.5	78	160	0.20	25	±0.4	54.46
28C24S	28	24	166	4.0	82	174	0.20	25	±0.5	54.46
28C28S	28	28	143	4.0	83	172	0.20	25	±0.5	54.46
28C48S	28	48	83	4.0	83	172	0.20	25	±0.7	54.46
48C5S	48	5	500	2.5	75	69	0.25	3	±0.25	58.45
48C9S	48	9	333	3.0	76	82	0.25	3	±0.3	58.45
48C12S	48	12	290	3.5	81	90	0.25	3	±0.4	58.45
48C15S	48	15	235	3.5	81	90	0.25	3	±0.4	58.45
48C24S	48	24	166	4.0	85	98	0.25	3	±0.5	58.45
48C28S	48	28	143	4.0	83	100	0.25	3	±0.5	58.45



Typical Weight: 14.5 Grams



**Delivery—  
stock to one week**

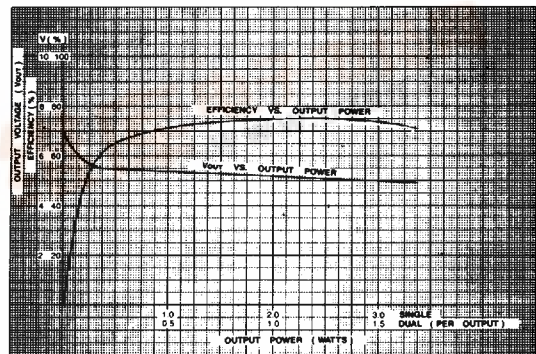
\*The ripple is measured with a 22µF, 75 volt high quality tantalum capacitor which is required across the output.  
Ordering Instructions: No minimum. Net 30 days F.O.B. Mt. Vernon, New York.

## PICO Electronics, Inc.

453 N. MacQuesten Pkwy.  
Mt. Vernon, N.Y. 10552

914-699-5514  
FAX 914-699-5565

## SERIES C SINGLE & DUAL 48V-5V



For immediate engineering assistance or to place an order—Call Toll Free 800-431-1064

T-57-11

TYPICAL

CHARACTERISTICS: Test conditions: 25°C ambient and input voltage at nominal value unless otherwise specified.

Output voltage tolerance at full load:

- 5V models ± 0.25V
- 9V models ± 0.3V
- 12V & 15V models ± 0.4V
- 24V & 28V models ± 0.5V
- 48V models ± 0.7V

Operating temperature: -25°C to +70°C ambient. No heat sink is required.

Storage temperature: -55°C to +125°C

Isolation: 100 megohms min. @ 500V DC

Short circuit protection: Temporary

查询"12C12D"供应商

LINE REGULATION: OUTPUT IS DIRECTLY PROPORTIONAL TO THE INPUT.

Input voltage range: 5V models 4 to 6.5V DC  
 12V models 9 to 15V DC  
 24V models 17 to 28V DC  
 28V models 21 to 31V DC  
 48V models 25 to 50V DC

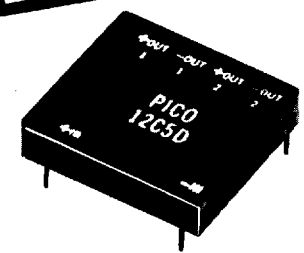
Converter frequency: 20 to 40 KHz

Output temperature coefficient: 0.02%/°C

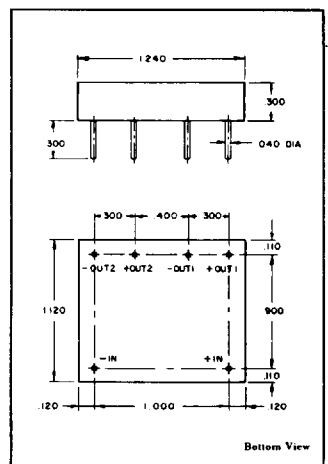
SERIES C - DUAL OUTPUT

PICO PART NUMBER	INPUT VOLTAGE (V DC)	DUAL OUTPUT VOLTAGE (V DC)	MAX. LOAD CURRENT PER OUTPUT (mA)	MAX. OUTPUT POWER PER OUTPUT (watts)	EFF. @ FULL LOAD TYPICAL (%)	INPUT CURRENT FULL LOAD TYPICAL (mA)	OUTPUT VOLTAGE RIPPLE @ FULL LOAD* (Vp-p max)	NO LOAD CURRENT TYPICAL (mA)	FULL LOAD OUTPUT VOLTAGE TOLERANCE (V DC)	PRICE 1-24
5C5D	5	5	250	1.25	71	704	0.20	90	±0.25	62.04
5C9D	5	9	166	1.5	72	833	0.20	100	±0.3	62.04
5C12D	5	12	125	1.5	75	800	0.20	100	±0.4	62.04
5C15D	5	15	100	1.5	77	779	0.15	110	±0.4	62.04
5C24D	5	24	62	1.5	78	769	0.15	120	±0.5	62.04
5C28D	5	28	53	1.5	76	789	0.15	120	±0.5	62.04
5C48D	5	48	31	1.5	76	789	0.15	120	±0.7	62.04
12C5D	12	5	250	1.25	69	302	0.20	45	±0.25	62.04
12C9D	12	9	166	1.5	75	333	0.20	45	±0.3	62.04
12C12D	12	12	145	1.75	80	364	0.20	40	±0.4	62.04
12C15D	12	15	133	2.0	82	406	0.15	40	±0.4	62.04
12C24D	12	24	83	2.0	83	401	0.15	45	±0.5	62.04
12C28D	12	28	71	2.0	82	407	0.15	45	±0.5	62.04
12C48D	12	48	41	2.0	81	412	0.15	45	±0.7	62.04
24C5D	24	5	250	1.25	67	155	0.20	30	±0.25	62.04
24C9D	24	9	166	1.5	73	171	0.20	30	±0.3	62.04
24C12D	24	12	145	1.75	78	186	0.20	30	±0.4	62.04
24C15D	24	15	117	1.75	79	184	0.20	25	±0.4	62.04
24C24D	24	24	83	2.0	82	203	0.20	25	±0.5	62.04
24C28D	24	28	71	2.0	83	201	0.20	25	±0.5	62.04
24C48D	24	48	41	2.0	83	201	0.20	25	±0.7	62.04
28C5D	28	5	250	1.25	67	133	0.20	30	±0.25	62.04
28C9D	28	9	166	1.5	73	147	0.20	30	±0.3	62.04
28C12D	28	12	145	1.75	75	167	0.20	30	±0.4	62.04
28C15D	28	15	117	1.75	78	160	0.20	25	±0.4	62.04
28C24D	28	24	83	2.0	82	174	0.20	25	±0.5	62.04
28C28D	28	28	71	2.0	83	172	0.20	25	±0.5	62.04
28C48D	28	48	41	2.3	83	172	0.20	25	±0.7	62.04
48C5D	48	5	250	1.25	74	70	0.25	3	±0.25	66.52
48C9D	48	9	166	1.5	76	82	0.25	3	±0.3	66.52
48C12D	48	12	145	1.75	82	89	0.25	3	±0.4	66.52
48C15D	48	15	117	1.75	82	89	0.25	3	±0.4	66.52
48C24D	48	24	83	2.0	85	98	0.25	3	±0.5	66.52
48C28D	48	28	71	2.0	83	100	0.25	3	±0.7	66.52

Low Profile  
0.3" Height!  
Up to 4 Watts



No Heat Sink  
or Electrical  
Derating Required

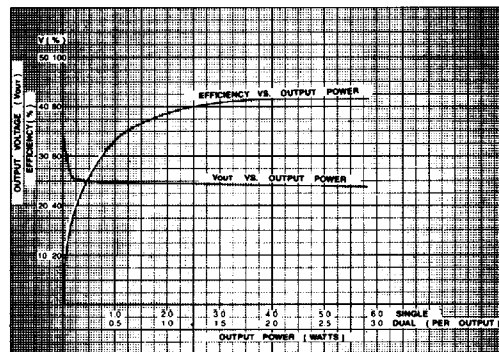
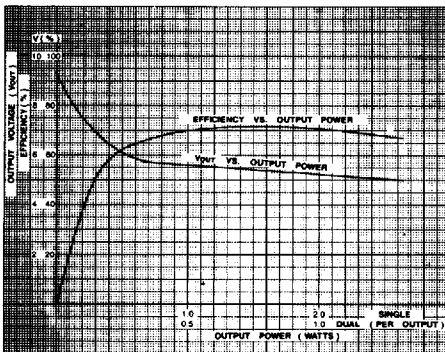


\*The ripple is measured with a 22µF, 75 volt high quality tantalum capacitor which is required across each output.

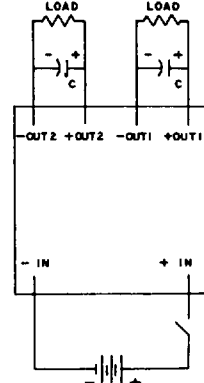
Ordering Instructions: No minimum. Net 30 days F.O.B. Mt. Vernon, New York.

SERIES C SINGLE & DUAL 5V-5V

SERIES C SINGLE & DUAL 24V-24V



Typical Weight: 14.5 Grams



**PICO Electronics, Inc.**

453 N. MacQuesten Pkwy., Mt. Vernon, N.Y. 10552 • 914-699-5514 • FAX 914-699-5565