

# Surface Mount Frequency Mixer

查询 LRMS-1W+ 供应商

## LRMS-1W+ LRMS-1W

Level 7 (LO Power +7dBm) 2 to 750 MHz



CASE STYLE: QQQ130  
PRICE: \$6.75 ea. QTY (1-9)

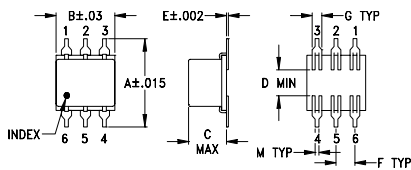
### Maximum Ratings

Operating Temperature	-40°C to 85°C
Storage Temperature	-55°C to 100°C
RF Power	50mW
IF Current	40mA

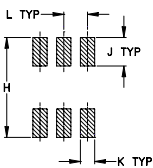
### Pin Connections

LO	1
RF	4
IF	5
GROUND	2,3,6

### Outline Drawing



#### PCB Land Pattern

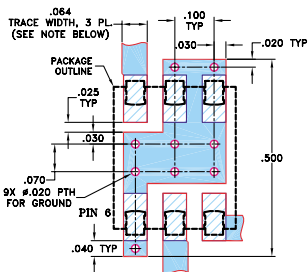


Suggested Layout,  
Tolerance to be within ±.002

### Outline Dimensions (inch/mm)

A	B	C	D	E	F	G
.400	.31	.200	.10	.010	.100	.050
10.16	7.87	5.08	2.54	0.25	2.54	1.27
H	J	K	L	M	wt	
.420	.120	.060	.100	.020	grams	
10.67	3.05	1.52	2.54	0.51	0.55	

### Demo Board MCL P/N: TB-44 Suggested PCB Layout (PL-083)



- NOTES: 1. TRACE WIDTH IS SHOWN FOR ROGERS RO4350B WITH DIELECTRIC THICKNESS 0.030" ± 0.002"; COPPER: 1/2 OZ. EACH SIDE. FOR OTHER MATERIALS TRACE WIDTH MAY NEED TO BE MODIFIED.  
2. BOTTOM SIDE OF THE PCB IS CONTINUOUS GROUND PLANE.  
■ DENOTES PCB COPPER LAYOUT WITH SMOBC (SOLDER MASK OVER BARE COPPER)  
▨ DENOTES COPPER LAND PATTERN FREE OF SOLDER MASK

### Features

- low conversion loss, 5.83 dB typ.
- excellent L-R isolation, 45 dB typ.

### Applications

- HF/VHF/UHF
- instrumentation
- cellular

### Electrical Specifications

FREQUENCY (MHz)	CONVERSION LOSS (dB)	LO-RF ISOLATION (dB)			LO-IF ISOLATION (dB)		
		L	M	U	L	M	U
2-750	DC-750	70	45	28	60	45	20

1 dB COMP.: +1 dBm typ.

L = low range [ $f_l$  to  $10 f_l$ ]  
m = mid band [ $2 f_l$  to  $f_l/2$ ]

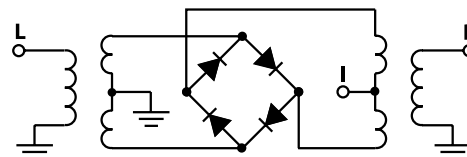
M = mid range [ $10 f_l$  to  $f_l/2$ ]

U = upper range [ $f_l/2$  to  $f_u$ ]

### Typical Performance Data

Frequency (MHz)	Conversion Loss (dB)	Isolation L-R (dB)	Isolation L-I (dB)	VSWR RF Port (:1)	VSWR LO Port (:1)
2.00	32.00	6.15	77.45	62.05	1.16
4.00	34.00	5.93	77.30	61.60	1.10
5.00	35.00	5.89	76.89	61.49	1.08
10.00	40.00	5.90	74.36	60.26	1.09
20.00	50.00	5.87	69.48	56.77	1.10
50.00	80.00	5.90	62.05	50.51	1.11
100.00	70.00	5.85	55.01	45.08	1.15
101.73	71.73	5.87	55.00	44.99	1.21
200.00	170.00	5.82	46.91	40.52	1.23
201.47	171.47	5.83	46.83	40.31	1.31
301.20	271.20	5.81	42.24	36.71	1.39
351.07	321.07	5.79	40.24	34.89	1.42
375.00	345.00	5.79	39.86	34.22	1.49
400.93	370.93	5.74	39.23	33.67	1.58
500.00	470.00	5.85	37.51	30.15	1.59
500.67	470.67	5.84	37.49	30.16	1.70
600.40	570.40	5.98	36.08	29.20	1.83
700.13	670.13	6.31	33.78	27.21	2.01
725.07	695.07	6.49	33.46	26.43	2.07
750.00	720.00	6.55	33.11	25.85	2.13

### Electrical Schematic



**Mini-Circuits®**  
ISO 9001 ISO 14001 CERTIFIED

ALL NEW  
minicircuits.com

P.O. Box 350166, Brooklyn, New York 11235-0003 (718) 934-4500 Fax (718) 332-4661 For detailed performance specs & shopping online see Mini-Circuits web site



The Design Engineers Search Engine Provides ACTUAL Data Instantly From MINI-CIRCUITS At: [www.minicircuits.com](http://www.minicircuits.com)

RF/IF MICROWAVE COMPONENTS

REV. B  
M102713  
LRMS-1W  
DJ/FL/CP/AM  
061229  
Page 1 of 2

