

[查询"B7716"供应商](#)



# SAW Components

Data Sheet B7716, Pb-Free





**SAW Components** **B7716**

**Low-Loss Filter for Mobile Communication** **1842,50 MHz**

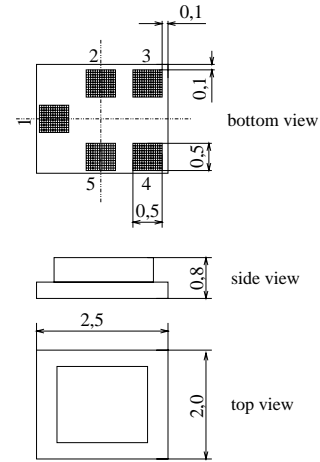
Data Sheet



Chip sized SAW package **QCS5H**

**Features**

- Low-loss RF filter for mobile telephone PCN systems, receive path
- Low amplitude ripple
- Usable passband 75 MHz
- Unbalanced to balanced operation
- Impedance transformation from 50Ω to 200Ω
- Suitable for GPRS class 1 to 12
- Package for **Surface Mounted Technology (SMT)**
- Ceramic SMD package
- Pb-Free



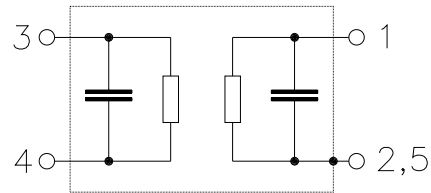
**Terminals**

- Ni, gold-plated

Dimensions in mm, approx. weight 0,015 g

**Pin configuration**

- |      |                   |
|------|-------------------|
| 1    | Input, unbalanced |
| 2, 5 | Input ground      |
| 3, 4 | Output, balanced  |
| 2, 5 | To be grounded    |



Type	Ordering code	Marking and Package according to	Packing according to
B7716	B39182-B7716-K910	C61157-A7-A139	F61074-V8189-Z000

Electrostatic Sensitive Device (ESD)

**Maximum ratings**

Operable temperature range	$T$	- 30 / + 85	°C	Machine Model, 10 pulses peak power of GSM signal duty cycle 4:8
Storage temperature range	$T_{stg}$	- 40 / + 85	°C	
DC voltage	$V_{DC}$	5	V	
ESD voltage	$V_{ESD}^*$	50*	V	
Input power at				
GSM850, GSM900	$P_{IN}$	15	dBm	
GSM1800, GSM1900	$P_{IN}$	12	dBm	
Tx bands				

\* - acc. to JESD22-A115A (Machine Model), 10 negative & 10 positive pulses



**SAW Components** **B7716**

**Low-Loss Filter for Mobile Communication** **1842,50 MHz**

Data Sheet



**Characteristics**

Operating Temperature Range:  $T = +25 \pm 2^\circ\text{C}$   
 Terminating source impedance:  $Z_S = 50\Omega$  (unbalanced)  
 Terminating load impedance:  $Z_L = 200\Omega$  (balanced) || 18nH

		min.	typ.	max.	
<b>Center frequency</b>	$f_C$	—	1842,5	—	MHz
<b>Maximum insertion attenuation</b>	$\alpha_{\max}$				
	1805,0 ... 1880,0 MHz	—	3,0	3,5	dB
<b>Amplitude ripple (p-p)</b>	$\Delta\alpha$				
	1805,0 ... 1880,0 MHz	—	1,1	1,6	dB
<b>Input VSWR</b>					
	1805,0 ... 1880,0 MHz	—	2,2	2,4	
<b>Output VSWR</b>					
	1805,0 ... 1880,0 MHz	—	2,2	2,4	
<b>Output phase balance (<math>\phi(S_{31}) - \phi(S_{21}) + 180^\circ</math>)</b>					
	1805,0 ... 1880,0 MHz	-12	—	+12	degree
<b>Output amplitude balance (<math> S_{31}/S_{21} </math>)</b>					
	1805,0 ... 1880,0 MHz	-1,4	—	1,4	dB
<b>Attenuation</b>	$\alpha$				
	0,0 ... 1200,0 MHz	40	47	—	dB
	1200,0 ... 1705,0 MHz	30	36	—	dB
	1705,0 ... 1785,0 MHz	15	19	—	dB
	1920,0 ... 1980,0 MHz	15	20	—	dB
	1980,0 ... 2200,0 MHz	20	22	—	dB
	2200,0 ... 3000,0 MHz	30	38	—	dB
	3000,0 ... 6000,0 MHz	40	48	—	dB



**SAW Components** **B7716**

**Low-Loss Filter for Mobile Communication** **1842,50 MHz**

Data Sheet



**Characteristics**

Operating Temperature Range:  $T = -10$  to  $+80^{\circ}\text{C}$   
 Terminating source impedance:  $Z_S = 50\Omega$  (unbalanced)  
 Terminating load impedance:  $Z_L = 200\Omega$  (balanced) ||  $18\text{nH}$

		min.	typ.	max.	
<b>Center frequency</b>	$f_C$	—	1842,5	—	MHz
<b>Maximum insertion attenuation</b>	$\alpha_{\text{max}}$				
	1805,0 ... 1880,0 MHz	—	3,2	3,5	dB
<b>Amplitude ripple (p-p)</b>	$\Delta\alpha$				
	1805,0 ... 1880,0 MHz	—	1,3	1,6	dB
<b>Input VSWR</b>					
	1805,0 ... 1880,0 MHz	—	2,4	2,6	
<b>Output VSWR</b>					
	1805,0 ... 1880,0 MHz	—	2,4	2,6	
<b>Output phase balance (<math>\phi(S_{31})-\phi(S_{21})+180^{\circ}</math>)</b>					
	1805,0 ... 1880,0 MHz	-12	—	+12	degree
<b>Output amplitude balance (<math> S_{31}/S_{21} </math>)</b>					
	1805,0 ... 1880,0 MHz	-1,4	—	1,4	dB
<b>Attenuation</b>	$\alpha$				
	0,0 ... 1200,0 MHz	40	47	—	dB
	1200,0 ... 1705,0 MHz	30	36	—	dB
	1705,0 ... 1785,0 MHz	10	15	—	dB
	1920,0 ... 1980,0 MHz	10	20	—	dB
	1980,0 ... 2200,0 MHz	20	22	—	dB
	2200,0 ... 3000,0 MHz	30	38	—	dB
	3000,0 ... 6000,0 MHz	40	48	—	dB



<b>SAW Components</b>	<b>B7716</b>
<b>Low-Loss Filter for Mobile Communication</b>	<b>1842,50 MHz</b>

Data Sheet



**Characteristics**

Operating Temperature Range:  $T = -30$  to  $+85^{\circ}\text{C}$   
 Terminating source impedance:  $Z_S = 50\Omega$  (unbalanced)  
 Terminating load impedance:  $Z_L = 200\Omega$  (balanced) ||  $18\text{nH}$

		min.	typ.	max.	
<b>Center frequency</b>	$f_C$	—	1842,5	—	MHz
<b>Maximum insertion attenuation</b>	$\alpha_{\text{max}}$	—	3,5	4,0	dB
1805,0 ... 1880,0 MHz					
<b>Amplitude ripple (p-p)</b>	$\Delta\alpha$	—	1,6	2,1	dB
1805,0 ... 1880,0 MHz					
<b>Input VSWR</b>		—	2,5	2,7	
1805,0 ... 1880,0 MHz					
<b>Output VSWR</b>		—	2,5	2,7	
1805,0 ... 1880,0 MHz					
<b>Output phase balance (<math>\phi(S_{31}) - \phi(S_{21}) + 180^{\circ}</math>)</b>		-12	—	+12	degree
1805,0 ... 1880,0 MHz					
<b>Output amplitude balance (<math> S_{31}/S_{21} </math>)</b>		-1,4	—	1,4	dB
1805,0 ... 1880,0 MHz					
<b>Attenuation</b>	$\alpha$				
0,0 ... 1200,0 MHz		40	47	—	dB
1200,0 ... 1705,0 MHz		30	36	—	dB
1705,0 ... 1785,0 MHz		9	12	—	dB
1920,0 ... 1980,0 MHz		10	20	—	dB
1980,0 ... 2200,0 MHz		20	22	—	dB
2200,0 ... 3000,0 MHz		30	38	—	dB
3000,0 ... 6000,0 MHz		40	48	—	dB



SAW Components

B7716

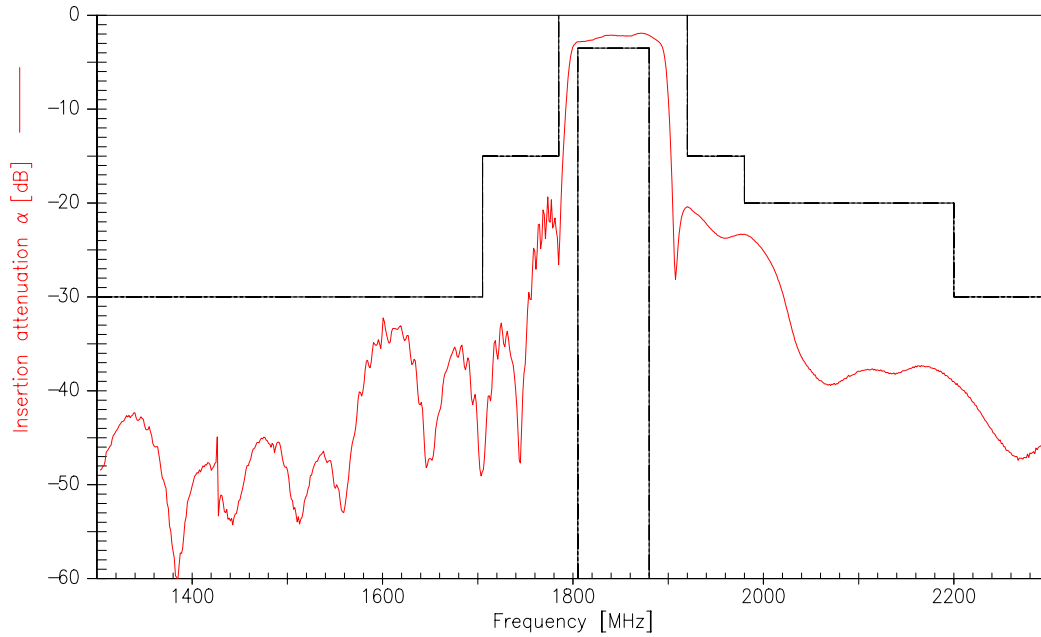
Low-Loss Filter for Mobile Communication

1842,50 MHz

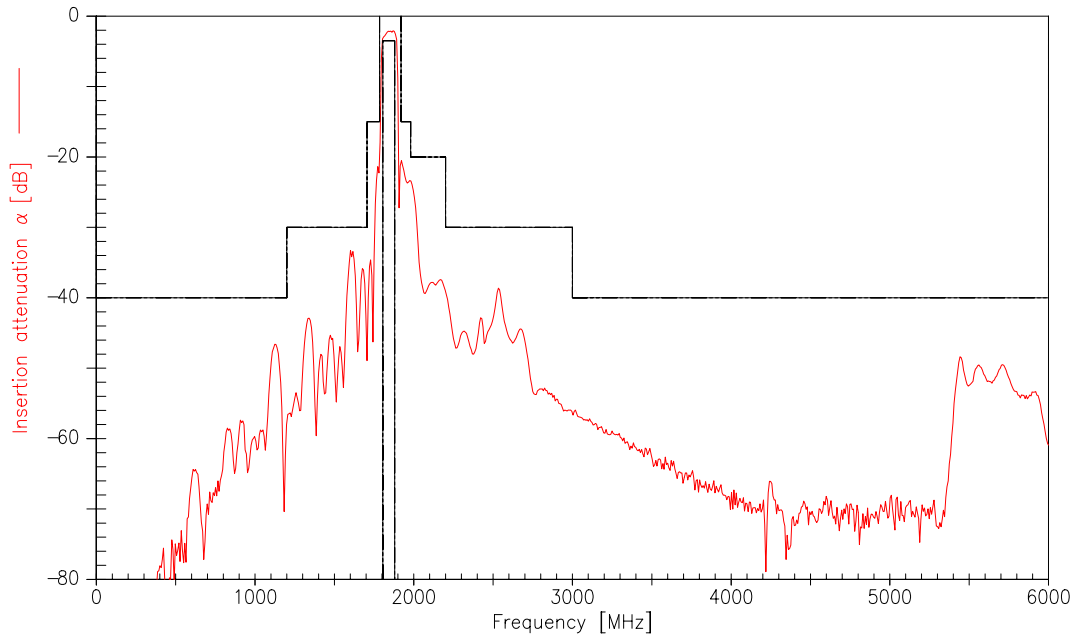
Data Sheet



Transfer function (spec for 25°C)



Transfer function (wideband)





<b>SAW Components</b>	<b>B7716</b>
<b>Low-Loss Filter for Mobile Communication</b>	<b>1842,50 MHz</b>
Data Sheet	The SMD logo is a stylized, bold, sans-serif font with a horizontal line through the middle of the letters.

**Published by EPCOS AG**

**Surface Acoustic Wave Components Division, SAW MC PD**

**P.O. Box 80 17 09, D-81617 München**

© EPCOS AG 2005. Reproduction, publication and dissemination of this brochure and the information contained therein without EPCOS' prior express consent is prohibited.

Purchase orders are subject to the General Conditions for the Supply of Products and Services of the Electrical and Electronics Industry recommended by the ZVEI (German Electrical and Electronic Manufacturers' Association), unless otherwise agreed.

This brochure replaces the previous edition.

For questions on technology, prices and delivery please contact the Sales Offices of EPCOS AG or the international Representatives.

Due to technical requirements components may contain dangerous substances. For information on the type in question please also contact one of our Sales Offices. the type in question please also contact one of our Sales Offices.