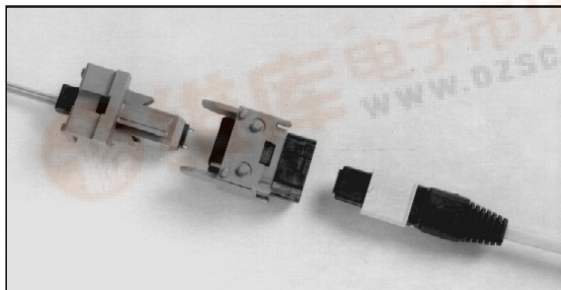


# MTP Backplane Interconnect System (BMTP)

[查询"86186-0020"供应商](#)



## Features & Benefits

- Patented dual shutter design for dust and eye safety protection
- Singlemode and multimode compatible
- Integrates with HDM electrical connector system
- Telcordia GR-1435-core compliant
- Generous mechanical float in the X, Y, and Z axis
- Compatible with optical flex circuit technology
- Utilizes standard MTP\* connector as user interface

## Applications

- High density blind mate interconnect for data and telecommunication systems
- Integrated optical and HDM electrical systems
- Total optical backplane solution when used with the Molex FlexPlane™ optical flex circuit

The Molex Backplane MTP (BMTP) interconnect system is designed to offer an industry standard user interface with the versatility of a blind mating card edge connector. Based on the NTT MT ferrule and MTP push-pull ribbon fiber connector, the BMTP interconnect is a high density solution for today's space constrained fiber optic systems.

The BMTP is Telcordia GR-1435-CORE compliant and is also designed to be compatible within the Molex High Density Metric (HDM) electrical backplane interconnect system. The BMTP system utilizes units which contain 1 MT ferrule and 1 MTP connector interface. Units can be ganged together within the HDM stiffener bar along with robust single or dual stainless steel guide pins, offering single unit insertion for ease of manufacturing. BMTP units can also be used as stand alone press fits and/or screw mounting to the card edge.

The BMTP can be configured for either multimode or singlemode ribbon fiber by simply using the appropriate MT ferrule and MTP connector. The system also supports the MTP gold high performance MT ferrule technology which offers improved singlemode performance. The BMTP interconnect can be incorporated into a total optical backplane solution when used in combination with optical flex circuitry.

\*MTP is a registered trademark of US Conec Ltd.

## Performance and Specifications

| Characteristics     | Units | Min. | Avg. | Max. | Comments               |
|---------------------|-------|------|------|------|------------------------|
| Insertion Loss:     |       |      |      |      |                        |
| 9/125μm SM fiber    | dB    | -    | .35  | 1.0  | -                      |
| 62.5/125μm MM fiber | dB    | -    | .3   | 1.0  | -                      |
| Return Loss:        |       |      |      |      |                        |
| Singlemode          | dB    | -    | -    | < 60 | Angle polish           |
| Temperature Range   | °C    | -40  | -    | +80  | 42 cycles              |
| Durability          | dB    | -    | -    | <0.2 | 200 mate/unmate cycles |

# PRELIMINARY



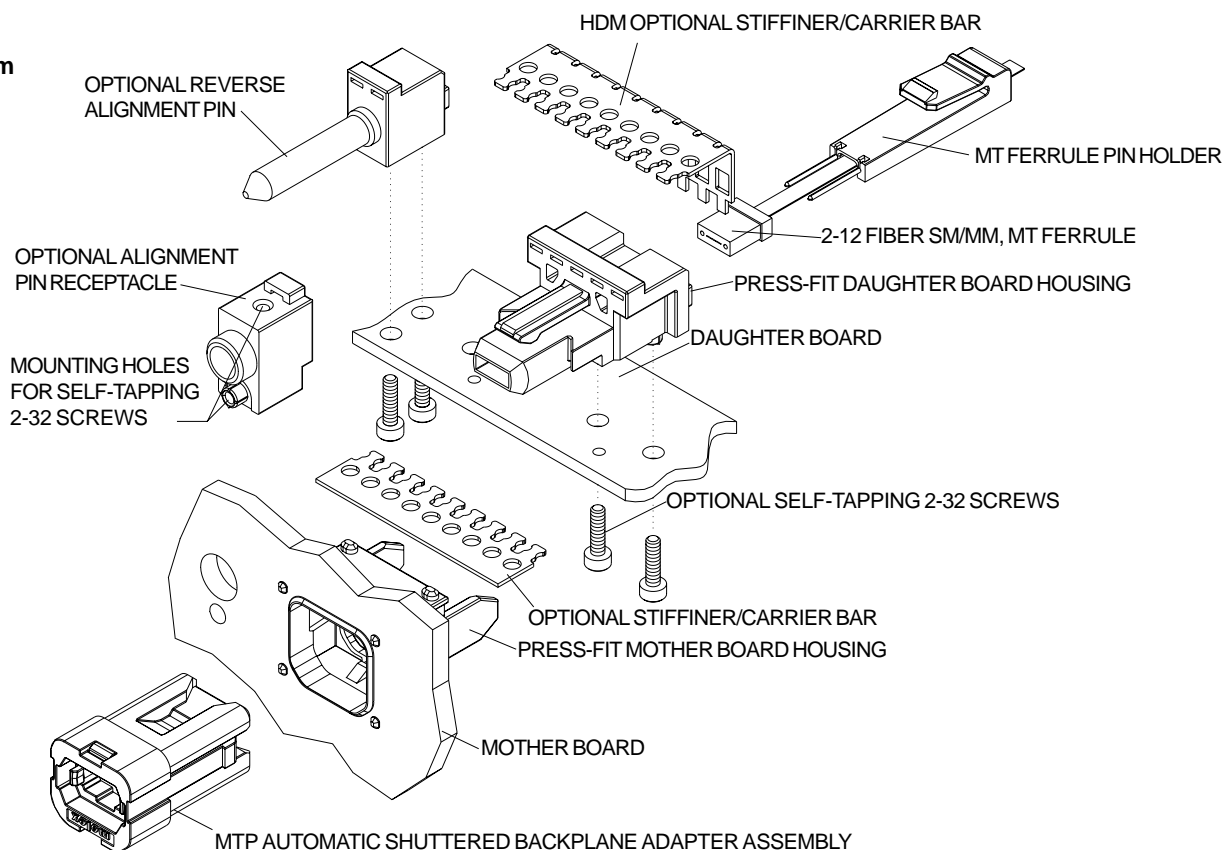
# MTP Backplane Interconnect System (BMTP)

[查询"86186-0020"供应商](#)

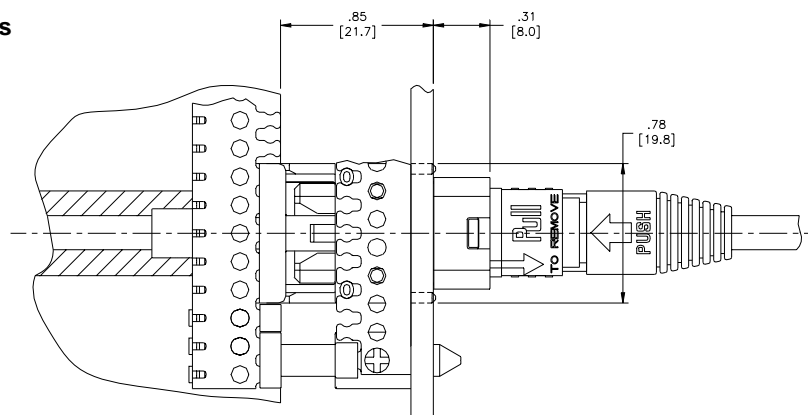


## Mechanical Dimensions

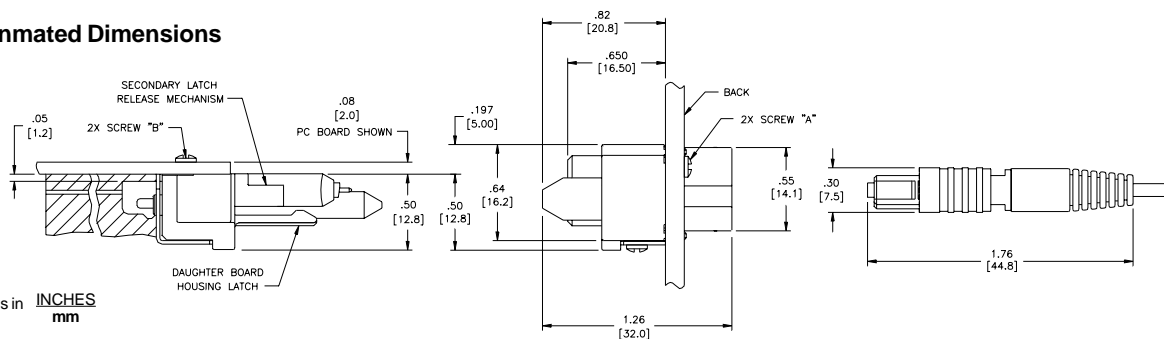
### BMTP System



### BMTP Mated Dimensions



### BMTP Unmated Dimensions



All dimensions in INCHES  
mm

# MTP Backplane Interconnect System (BMTP)



[查询"86186-0020"供应商](#)

## Standard Part Numbers

| Order Number | Description  |
|--------------|--|
| 86086-5200   | BMTP daughter board card parts kit, single position            |
| 86186-5000   | BMTP mother board parts kit, single position, internal shutter |
| 86186-0020   | BMTP automatic shuttered adapter                               |
| 86087-5202   | MT ferrule pin holder  |