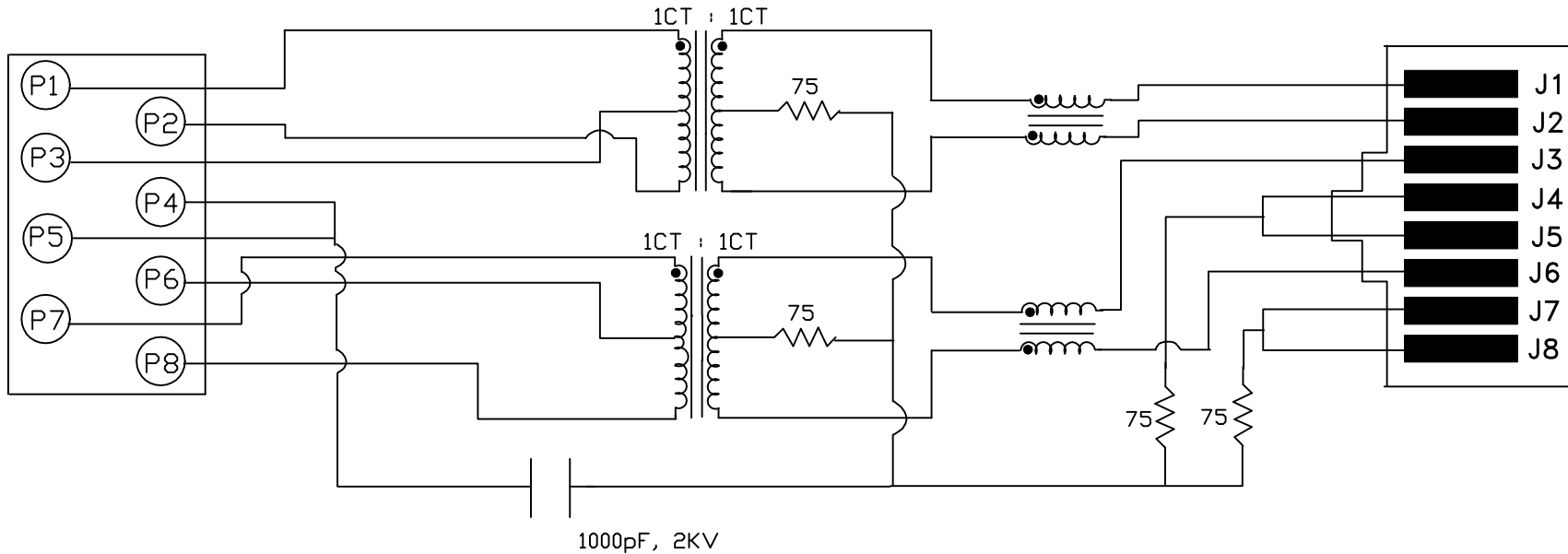


[查询"SI-50013"供应商](#)



ELECTRICAL SPECIFICATIONS:

- |  |   |
|--|---|
| 1.0 TURNS RATIO (P4-P5-P6) : (J3-J6)                   | : 1CT : 1CT ± 3%                          |
| (P3-P2-P1) : (J1-J2)                                   | : 1CT : 1CT ± 3%                          |
| 2.0 INDUCTANCE (P6-P4)                                 | : 350uH MIN. @ 0.1V , 100KHz, 8mA DC Bias |
| (P3-P1)  | : 350uH MIN. @ 0.1V, 100KHz, 8mA DC Bias  |
| 3.0 LEAKAGE INDUCTANCE P6-P5-P4 (WITH J6 AND J3 SHORT) | : 0.3 MAX. @ 1MHZ                         |
| P3-P2-P1 (WITH J2 AND J1 SHORT)                        | : 0.3 MAX. @ 1MHZ                         |
| 4.0 INTERWINDING CAPACITANCE (P6,P5,P4) TO (J6,J3)     | : 25pf TYP @ 1MHZ                         |
| (P3,P2,P1) TO (J2,J1)                                  | : 25pf TYP @ 1MHZ                         |
| 5.0 DC RESISTANCE (J6-J3)=(J2-J1)                      | : 1.2 ohms Max.                           |

NOTES

1.0 PINS WITHOUT ELECTRICAL CONNECTION ARE OMITTED.

Stewart Connector Systems

<http://www.stewartconnector.com>

InNet Technologies inc.

<http://www.innet-tech.com>

SHEET  
1 OF 4

DRAWING NO.

SI-50013 REV. X

[查询"SI-50013"供应商](#)

6.0 RETURN LOSS:  $\langle P7-P8 \rangle = 100 \text{ OHMS}$  AND  $\langle P1-P2 \rangle = 100 \text{ OHM REF.}$   
1MHz TO 30MHz : 18dB MIN.  
30MHz TO 80MHz : 12dB MIN.  
NOTE: 100 OHMS CONNECTED TO  $\langle J2-J1 \rangle$  OR  $\langle J6-J3 \rangle$ .

7.0 VOLTAGE WITHSTAND:  
 $\langle J1, J2 \rangle$  TO  $\langle P1, P2 \rangle$  : 1500 VAC  
 $\langle J3, J6 \rangle$  TO  $\langle P7, P8 \rangle$  : 1500 VAC

8.0 INSERTION LOSS:  $RS=RL=100 \text{ ohms}$   
100KHz TO 100MHz 1.1 dB TYP

9.0 RISE TIME:  $RS=100 \text{ OHMS}$  AND  $RL = 100 \text{ OHMS}$   
OUTPUT VOLTAGE = 1 V peak 3.0 nS MAX  
PULSE WIDTH= 112nS 3.0 nS MAX

10.0 CROSS TALK:  
1-100 MHz 30 dB TYP

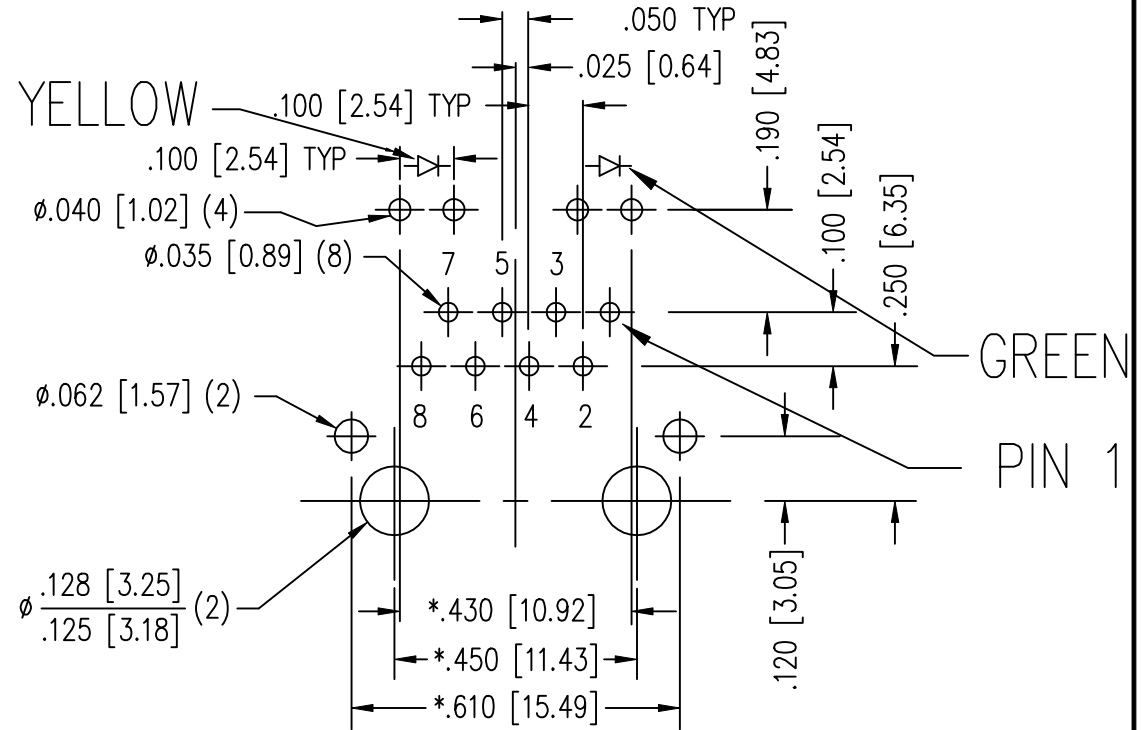
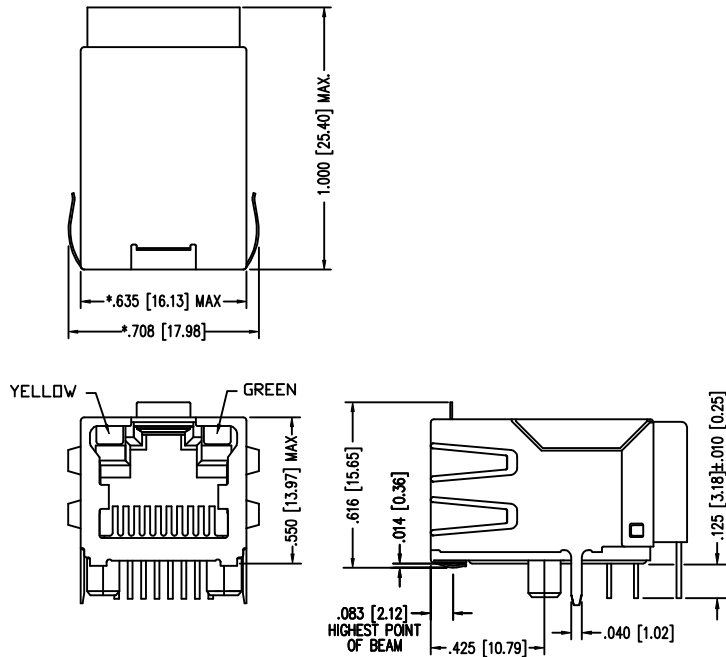
11.0 COMMON TO COMMON MODE ATTENUATION:  
1MHz TO 100MHz 35dB TYP

Stewart Connector Systems  
<http://www.stewartconnector.com>  
InNet Technologies inc.  
<http://www.innet-tech.com>

查询"SI-50013"供应商

STANDARD LED	WAVELENGTH	* Forward V (MAX)	(TYP)
YELLOW	590 nm	2.5 V	2.1 V
GREEN	565 nm	2.5 V	2.2 V

\* WITH A FORWARD CURRENT OF 20 mA



P.C.B. RECOMMENDED HOLE LAYOUT  
 SEEN FROM COMPONENT SIDE  
 TOLERANCE ±.003 [0.08] UNLESS OTHERWISE SPECIFIED

NOTES:

- TOLERANCES COMPLY WITH F.C.C. DIMENSION REQUIREMENTS
- DIMENSIONS SHOWN WITH "\*" TO BE CENTRAL ABOUT CENTER LINE
- DIMENSIONS SHOWN ARE SUBJECT TO CHANGE WITHOUT NOTICE.
- PIN NOT ELECTRICALLY CONNECTED MAYBE OMITTED. SEE ELECTRICAL DRAWING FOR OMITTED PINS.

AVAILABLE WITH:

- STANDARD 50 MICRO-INCH SELECTIVE GOLD PLATING

CT750006

InNet Technologies Inc.

<http://www.innet-tech.com>

Stewart Connector Systems

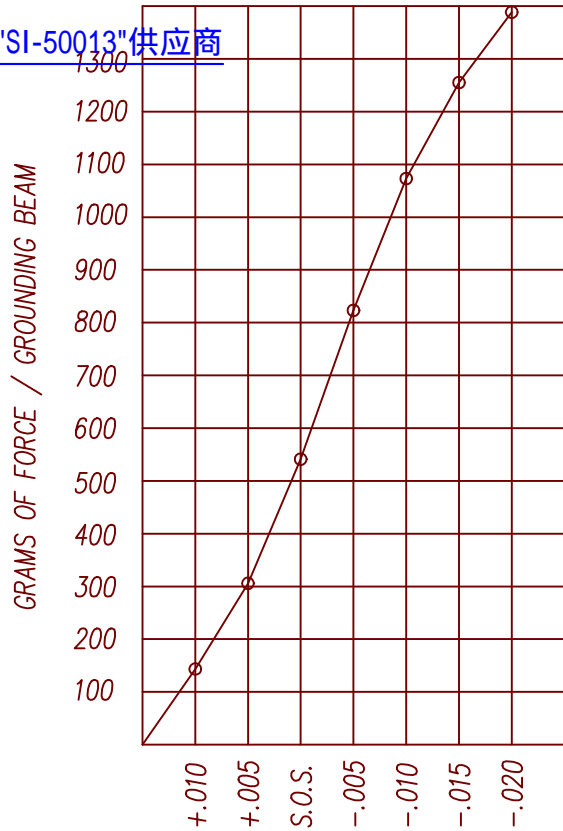
<http://www.stewartconnector.com>

SHEET  
3 of 4

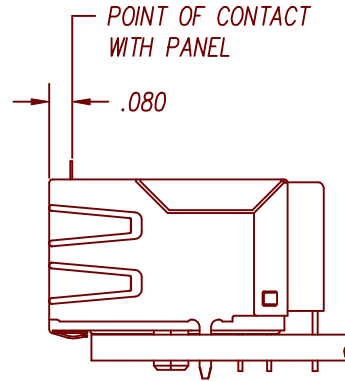
DRAWING NO. SI-50013

REV. 05

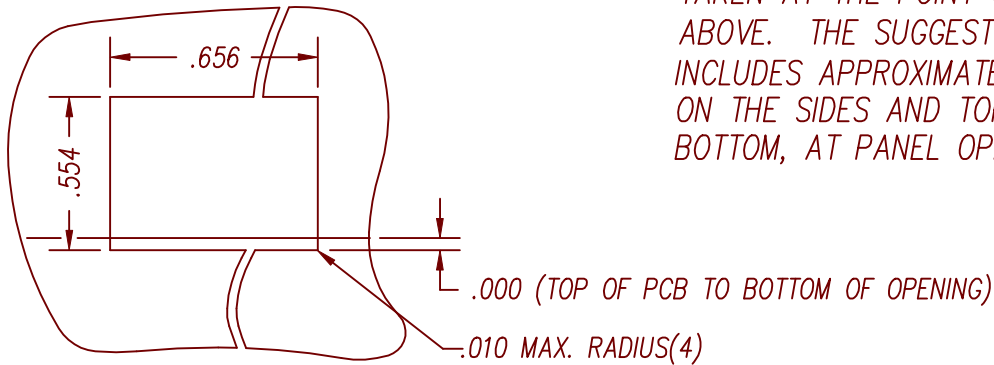
查询"SI-50013"供应商



PANEL GROUNDING BEAM DEFLECTION  
S.O.S. = SUGGESTED OPENING SIZE



THE SUGGESTED PANEL OPENING IS INTENDED TO GIVE THE USER THE ABILITY TO HAVE REASONABLE JACK / PANEL CLEARANCES YET MAINTAIN RELIABLE GROUNDING CAPABILITY. THESE VARIABLES CAN BE ADJUSTED IN EITHER DIRECTION BUT MAY CARRY SOME CONSEQUENCES IN THE FORM OF LOWER MATING FORCES OR TIGHTER ASSEMBLY TOLERANCES. FORCE VALUES ON THE GRAPH ARE GENERAL AVERAGES TAKEN AT THE POINT OF CONTACT SHOWN ABOVE. THE SUGGESTED PANEL OPENING INCLUDES APPROXIMATELY .020 CLEARANCE ON THE SIDES AND TOP AND .013 ON THE BOTTOM, AT PANEL OPENING.



SUGGESTED PANEL OPENING

CT720034X1/24-001302

<b>InNet Technologies Inc.</b> <a href="http://www.innet-tech.com">http://www.innet-tech.com</a>		
<b>Stewart Connector Systems</b> <a href="http://www.stewartconnector.com">http://www.stewartconnector.com</a>		
SHEET 4 of 4	DRAWING NO. SI-50013	REV. 05