

[查询"1-1437061-5"供应商](#)

HIGH TEMPERATURE LOW PROFILE HEADERS STRAIGHT PINS

.100" x .100" CENTERS



LR92984 E60980

PHYSICAL PROPERTIES

INSULATION MATERIAL: Glass filled thermoplastic rated UL 94V-0, infrared & vapor phase process compatible.

COLOR: Black

CONTACT MATERIAL: Brass with 15μ inches min. gold over 50μ inches min. nickel plating

ELECTRICAL PROPERTIES

CURRENT RATING: 1 Amp

INSULATION RESISTANCE: >1 x 10⁹ Ohms @ 500 VDC

DIELECTRIC STRENGTH: >1000 VRMS @ sea level

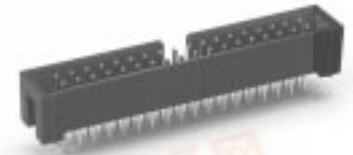
ENVIRONMENTAL PROPERTIES

TEMPERATURE RATING: -55°C To 125°C

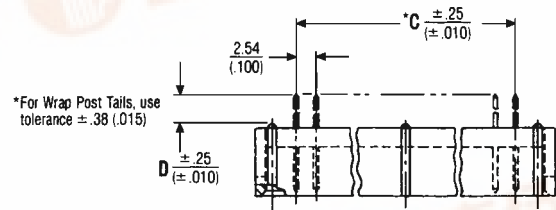
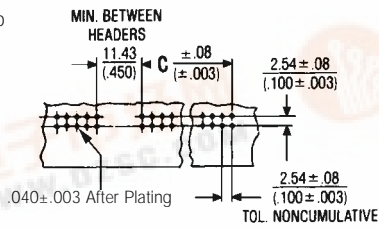
SOLDER REFLOW TEMPERATURE RATING: -55°C To 125°C

MATING CONNECTORS

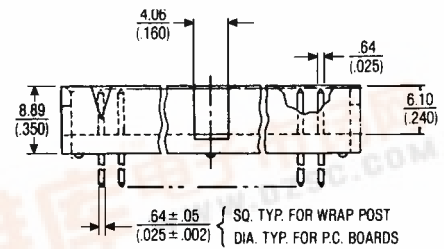
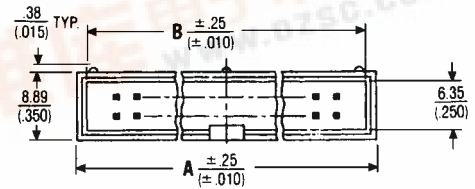
FEMALE SOCKETS: See pages 9-12



RECOMMENDED HOLE PATTERN



*For Wrap Post Tails, use tolerance ±.38 (.015)



Ordering Information

CATALOG NUMBERS		NO. OF POS.	DIMENSIONS IN MM (INCHES)		
DIMENSION "D" IN MM (INCHES)			A	B	C
2.90 (.114)	4.19 (.165)	10	20.32 (.800)	17.78 (.700)	10.16 (.400)
FOR 1.57 (.062)	FOR 3.18 (.125)				
P.C. BOARDS	P.C. BOARDS	14	25.40 (1.000)	22.86 (.900)	15.24 (.600)
		16	27.94 (1.100)	25.40 (1.000)	17.75 (.700)
		20	33.02 (1.300)	30.48 (1.200)	22.86 (.900)
		26	40.64 (1.6001)	38.10 (1.5001)	30.48 (1.2001)
		34	50.80 (2.000)	48.26 (1.900)	40.64 (1.600)
		40	58.42 (2.300)	55.88 (2.200)	48.26 (1.900)
		50	71.12 (2.800)	68.58 (2.700)	60.96 (2.400)
		60	83.82 (3.300)	81.28 (3.200)	73.66 (2.900)

Dimensions shown are for reference only. Dimensions are in millimeters (inches).



[查询"1-1437061-5"供应商](#)

HIGH TEMPERATURE LOW PROFILE HEADERS RIGHT ANGLE PINS

.100" x .100" CENTERS



LR92984 E60980

PHYSICAL PROPERTIES

INSULATION MATERIAL: Glass filled thermoplastic rated UL 94V-0, infrared & vapor phase process compatible.

COLOR: Black

CONTACT MATERIAL: Brass with 15µ inches min. gold over 50µ inches min. nickel plating

ELECTRICAL PROPERTIES

CURRENT RATING: 1 Amp

INSULATION RESISTANCE: >1 x 10⁹ Ohms @ 500 VDC

DIELECTRIC STRENGTH: >1000 VRMS @ sea level

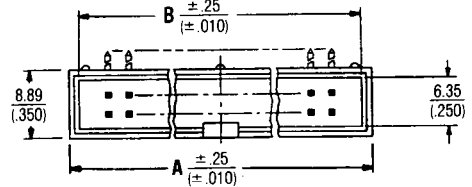
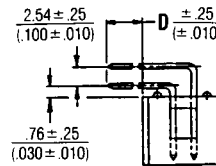
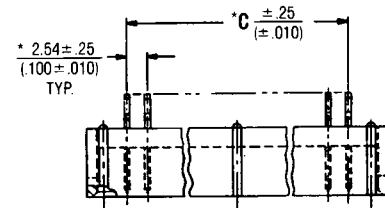
ENVIRONMENTAL PROPERTIES

TEMPERATURE RATING: -55°C TO 125°C

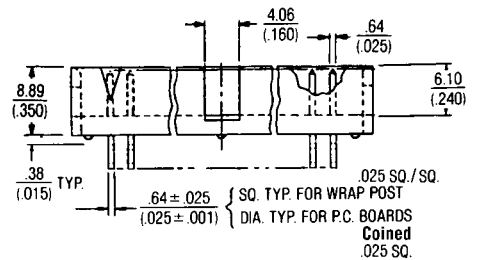
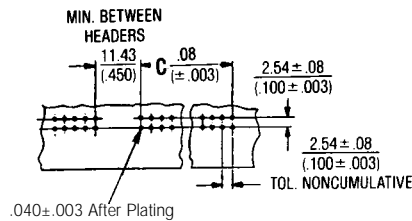
SOLDER REFLOW TEMPERATURE RATING: -55°C TO 125°C

MATING CONNECTORS

FEMALE SOCKETS: See pages 9-12



RECOMMENDED HOLE PATTERN



Ordering Information

CATALOG NUMBERS		NO. OF POS.	DIMENSIONS IN MM (INCHES)		
DIMENSION "D" IN MM (INCHES) 2.90 (.114) FOR 1.57 (.062) P.C. BOARDS	4.19 (.165) FOR 3.18 (.125) P.C. BOARDS		A	B	C
636-1007	636-1017	10	20.32 (.800)	17.78 (.700)	10.16 (.400)
636-1407	636-1417	14	25.40 (1.000)	22.86 (.900)	15.24 (.600)
636-1607	636-1617	16	27.94 (1.100)	25.40 (1.000)	17.75 (.700)
636-2007	636-2017	20	33.02 (1.300)	30.48 (1.200)	22.86 (.900)
636-2607	636-2617	26	40.64 (1.6001)	38.10 (1.5001)	30.48 (1.2001)
636-3407	636-3417	34	50.80 (2.000)	48.26 (1.900)	40.64 (1.600)
636-4007	636-4017	40	58.42 (2.300)	55.88 (2.200)	48.26 (1.900)
636-5007	636-5017	50	71.12 (2.800)	68.58 (2.700)	60.96 (2.400)
636-6007	636-6017	60	83.82 (3.300)	81.28 (3.200)	73.66 (2.900)