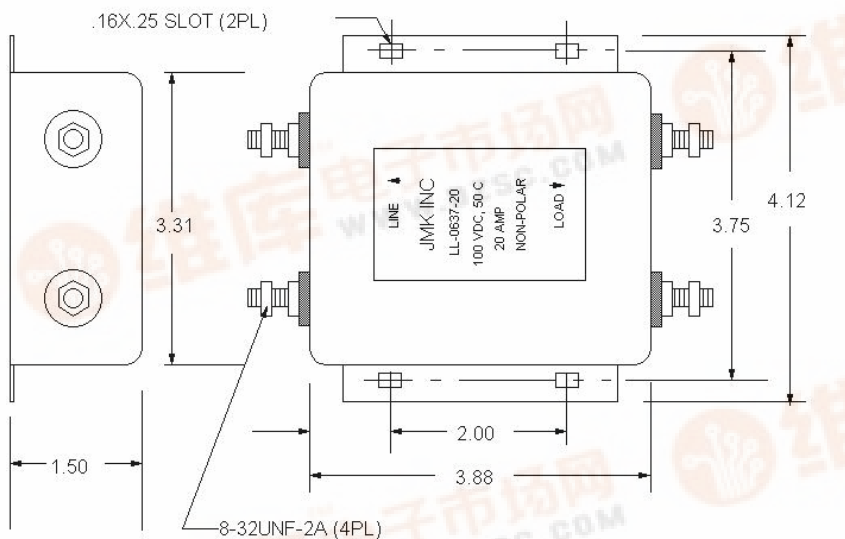
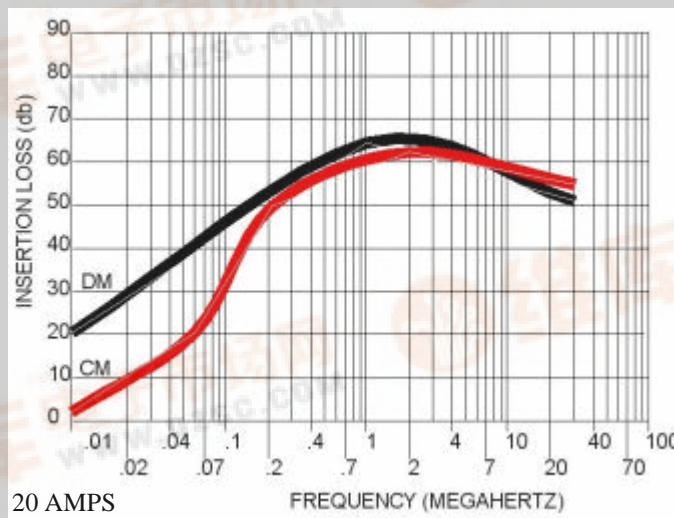
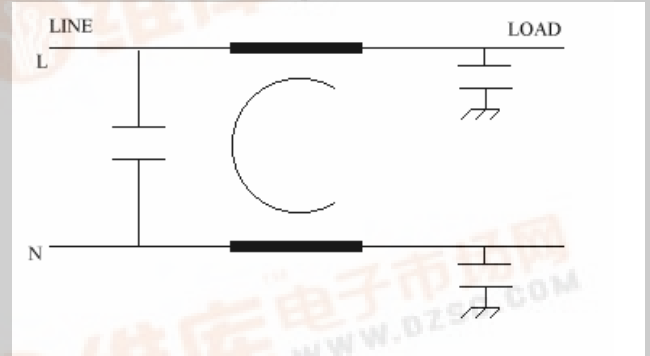


This series is designed for use where very high DC current must be filtered in a very tight area. This filter has been configured so that some line imbalance can be tolerated without deteriorating the common mode insertion loss.

Operating Voltage= 48Vdc  
 OperatingCurrentMax= 20 amp / 30 amp  
 Operating Frequency=DC  
 Temperature Range= -40 to 50 deg. C  
 DieWithstand(Line to Case)= 1500Vdc for 1 Min  
 DieWithstand (Line to Line)= 1500Vdc for 1 min



Ordering Information  
 JMK Part Number LL-0637-20  
 Terminals 8-32 Threaded

USA JMK Inc 15 Caldwell Dr. Amherst, NH 03031 PH: 603 886-4100 FX: 603 886-4115  
 email: info@jmkfilters.com  
 EUR JMK Inc Glasgow G13 1DN Scotland UK PH: 44-(0) 7785310729 FX: 44-(0) 141 589 1884