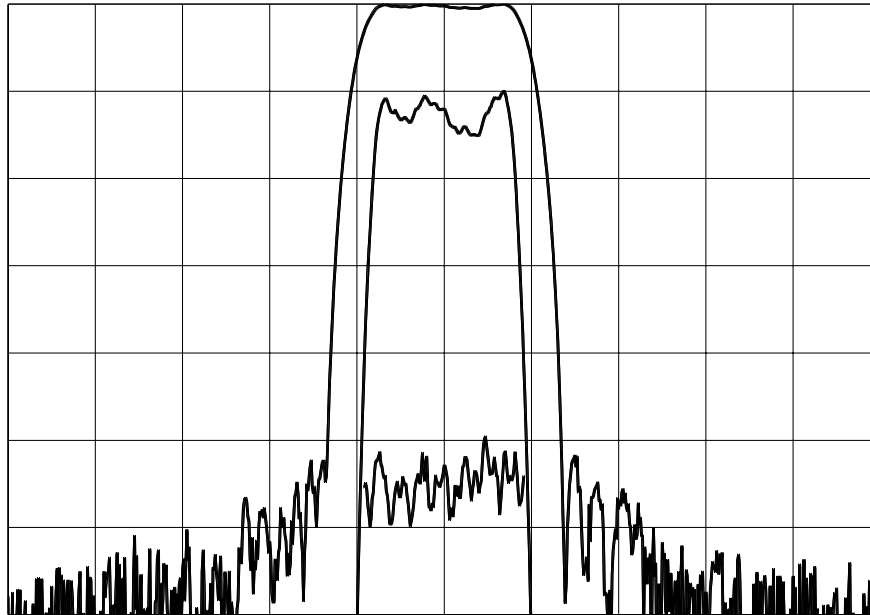


**TYPICAL PERFORMANCE**



Horizontal: 2.0 MHz/div    Vertical (from top): Magnitude    10 dB/div  
 Magnitude    1 dB/div  
 Group Delay    50 ns./div

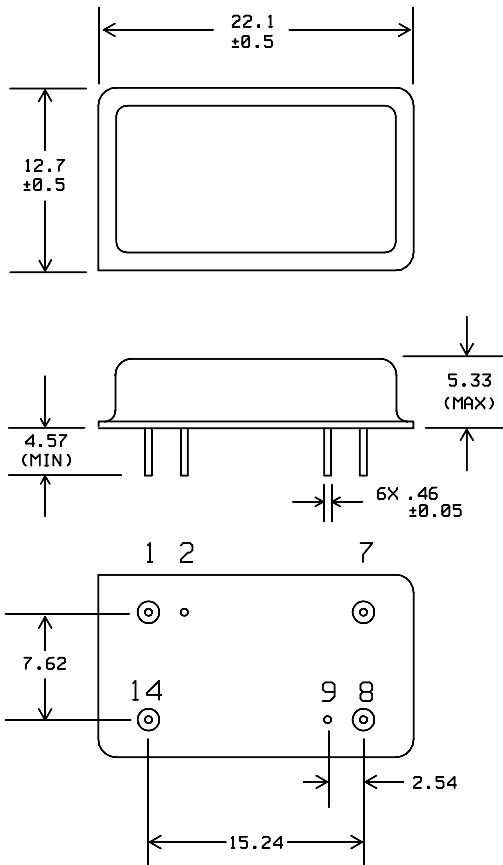
**SPECIFICATION**

Parameter	Min.	Typ.	Max.	Units.
Center Frequency ( Fc) <sup>1</sup>	69.91	70.0	70.09	MHz
Insertion Loss at Fc		24	25	dB
1 dB Bandwidth	3	3.2		MHz
3 dB Bandwidth	3.5	3.6		MHz
40 dB Bandwidth		5.3	5.6	MHz
Passband Ripple		0.5	0.8	dB
Phase Ripple		3.0	8	deg p-p
Group Delay Ripple		50	100	ns p-p
Absolute Delay		2.3		us
Ultimate Rejection	50	55		dB
Source / Load Impedance	50			Ω
Substrate Material	Quartz			
Ambient Temperature		25		° C

Notes:

1: Mean value of the 3 dB Bandwidth

**PACKAGE OUTLINE**

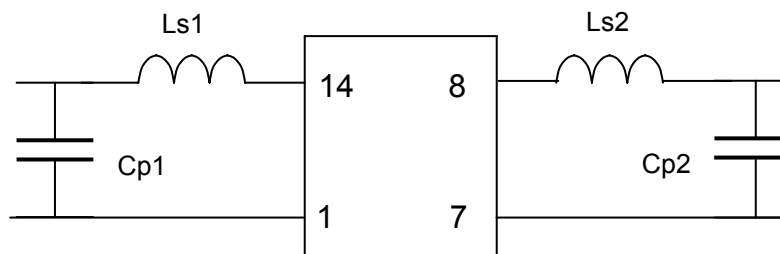


**Units:** mm

**Pin Configuration:**

Input: 14  
 Input Return: 1  
 Output: 8  
 Output Return: 7  
 Ground: 2,9

**MATCHING CIRCUIT**



**Component values:**

Ls1 = 607 nH.      Ls2 = 642 nH.      (Minimum Q = 45)  
 Cp1 = 51 nH.      Cp2 = 51 nH.

**Notes**

1. Recommend use of 2% tolerance components.
2. Optimum values depend on board layout. Values intended as guide only.

ISO 9001  
 Registered