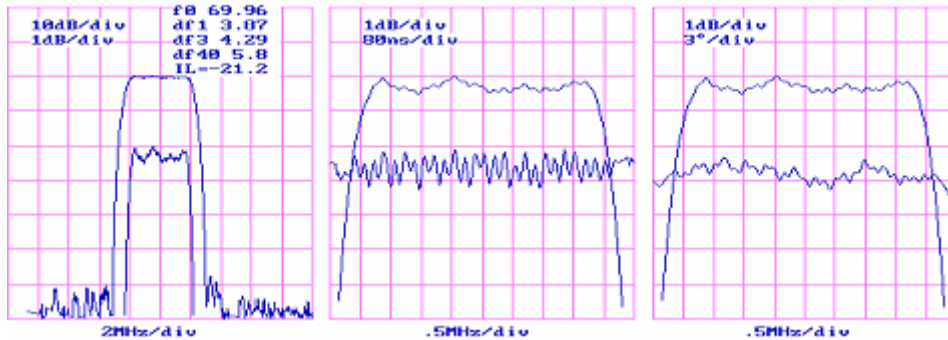


LBT7031 SAW Filter Electrical Characteristic

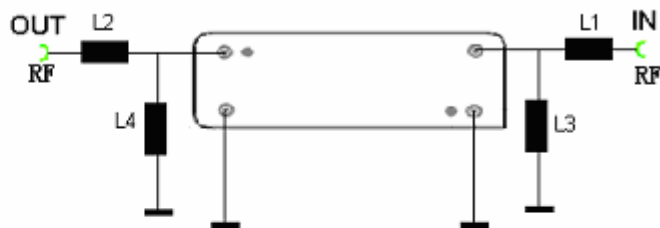
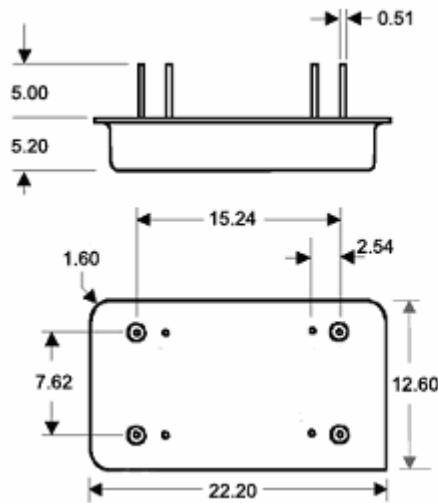
<i>Specifications</i>				
Parameter	Unit	Minimum	Typical	Maximum
Center Frequency	MHz	69.91	70	70.09
Insertion Loss	dB		21.5	25
1 dB Bandwidth	MHz	3.7	3.8	
3 dB Bandwidth	MHz	4	4.2	
40 dB Bandwidth	MHz		5.8	6.1
Passband Variation	dB		0.4	0.8
Phase Linearity	degrees		3	6
Group Delay Variation	nsec		80	100
Absolute Delay	usec		3	
Ultimate Rejection	dB	50	60	
Substrate Material		112-LiTaO ₃		
Ambient Temperature	° C	25		
Package Size		DIP2212 (22.2x12.6x5.2mm ³)		

Typical Performance



Package Outline

Matching Configuration



L1=L2=168nH
L3=L4=270nH

Source/Load Impedance=50 ohm

Notes - Component values may change depending on board layout.