

FEATURES AND SPECIFICATIONS

[查询"45750-0111"供应商](#)

molex® 4.20mm (.165") Pitch Mini-Fit Plus HCS™ Terminal

45750

Crimp, Female

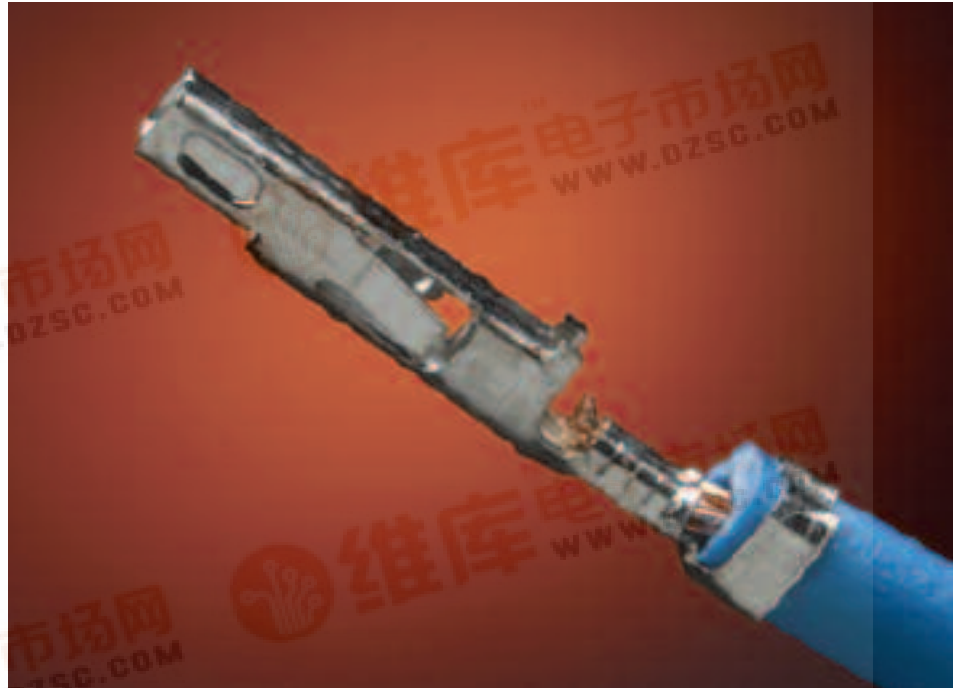
Hot-pluggable, high-current Mini-Fit Plus HCS Terminals handle up to 12 amperes of current load and increase mating cycle durability

The new, improved and patented Mini-Fit Plus HCS terminals are designed to be used with all existing Mini-Fit® crimp receptacle housings. The Mini-Fit Plus HCS terminals will allow for current loads up to 12.0A in 2 to 10 circuit configurations and 11.0A in 12 to 24 circuit configurations.

The unique, elliptical contact dimple design increases durability, doubling to tripling the number of mating cycles versus standard Mini-Fit terminals. Terminals are available in post-plated versions only, enhancing the long-term electrical performance and of the mating interface. The gold-plated terminals are suitable for "hot-pluggable" applications.

Features and Benefits

- High-current terminal design enables customers to upgrade existing crimp receptacle housings to carry an additional 3.0A to 5.0A per circuit
- Gold plated terminals are hot pluggable making them suitable for current interruption applications where hot mating and unmating is required
- High force, low-pressure contact dimple design increases durability (cycling) while minimizing contact resistance
- Two-point contact design assures high reliability
- Compatible with existing Mini-Fit application tooling allowing customers to process these terminals with existing equipment



SPECIFICATIONS

Reference Information

Packaging: Reel or bag
Use With: 5557, 30067, 42474, and 44516 housings
Designed In: Millimeters

Electrical

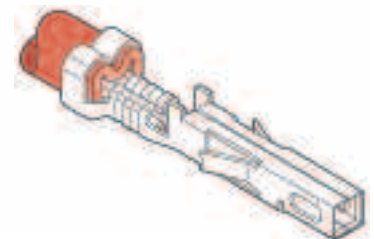
Voltage: 600V
Current: 12.0A max.
Current Interruption: 8.0A max. at 24V
Contact Resistance: 10 milliohms max.
Dielectric Withstanding Voltage: 2200V
Insulation Resistance: 1000 Megohms min.

Mechanical

Contact Insertion Force: 1.54kg (3.40 lb) max.
Contact Retention to Housing: 3.0kg (6.61 lb) min.
Wire Pull-out Force: 6.0kg (13.23 lb) min.
Mating Force: 1.14kg (2.51 lb) max.
Unmating Force: 0.10kg (0.22 lb) min.
Normal Force: 200g min.
Durability: Tin (Sn) – 75 cycles
Gold (Au) – 100 cycles

Physical

Contact: Copper (Cu) Alloy
Plating:
Contact Area – 100µ" Tin (Sn) or 30µ" Gold (Au)
Underplating – 50µ" Nickel (Ni)
Wire Range: 16, 18, 20 AWG
Insulation Range: 3.10mm (.122") max.
Strip Length: 3.00 to 3.50mm (.118" to .138")
Operating Temperature: -40 to +105° C



APPLICATIONS

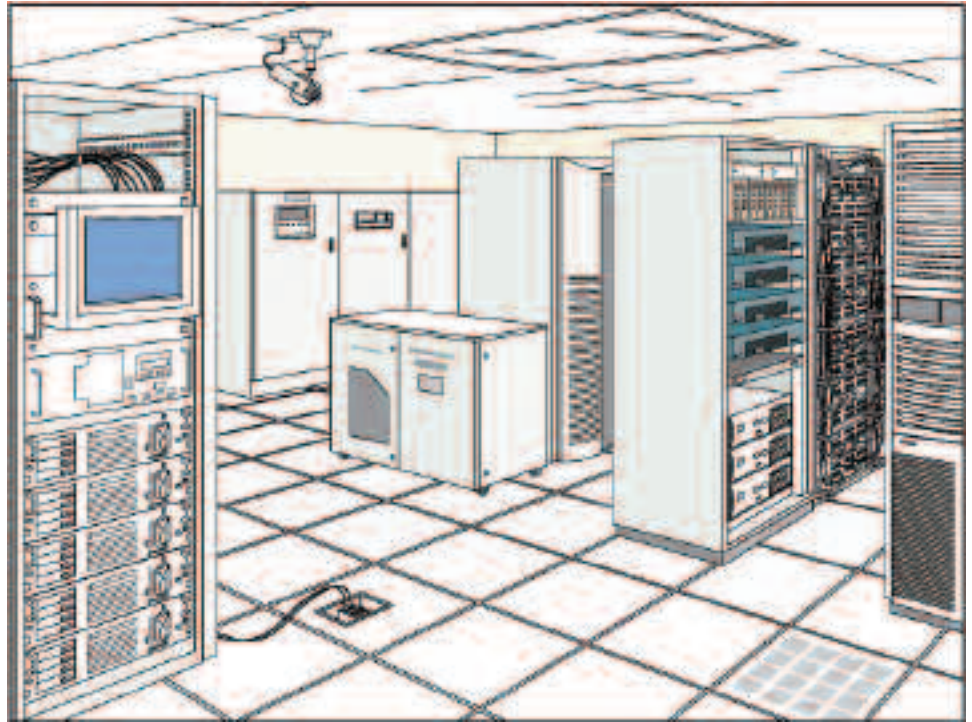


**4.20mm (.165") Pitch
Mini-Fit Plus HCS™ Terminal**

[查询"45750-0111"供应商](#)

**45750
Crimp, Female**

- Power Supplies
 - Fan Trays
 - Lottery Systems
 - HVAC Systems
 - Personal Computers
 - Lighting Systems
 - Gaming Equipment
 - Office Equipment
 - Disk Drives
 - Network servers
 - Telecommunications
 - Base stations
 - Hubs and routers
 - Appliances
 - Business Equipment
 - Printers
 - PC Industry
- Automotive
 - Industrial Equipment
 - Medical



Current Rating Chart

Wire Range AWG	2 - 3 Circuits	4 - 6 Circuits	7 - 10 Circuits	12 - 24 Circuits
16	12.0A	12.0A	12.0A	11.0A
18	12.0A	11.0A	10.0A	9.0A
20	9.0A	9.0A	8.0A	8.0A

Application Tooling

Terminal	Wire Range (AWG)	Insulation Dia. (max.)	Strip Length	Applicator
45750-01X1	16	3.10mm (.112")	3.00 - 3.50mm (.188 - .138")	63860-1200
45750-02X1	18 - 20	2.15mm (.085)		63860-1400

ORDERING INFORMATION

Order No.	Plating	Wire Range (AWG)	Packaging
45750-0111	Tin	16	Reel
45750-0112			Bag
45750-0211		18 - 20	Reel
45750-0212			Bag
45750-0121	Gold	16	Reel
45750-0122			Bag
45750-0221		18 - 20	Reel
45750-0222			Bag

Americas Headquarters
Lisle, Illinois 60532 U.S.A.
1-800-78MOLEX
amerinfo@molex.com

Far East North Headquarters
Yamato, Kanagawa, Japan
81-462-65-2324
feninfo@molex.com

Far East South Headquarters
Jurong, Singapore
65-6-268-6868
fesinfo@molex.com

European Headquarters
Munich, Germany
49-89-413092-0
eurinfo@molex.com

Corporate Headquarters
2222 Wellington Ct.
Lisle, IL 60532 U.S.A.
630-969-4550
Fax:630-969-1352

Visit our Web site at <http://www.molex.com/product/power/mf.html>