

# 3-WAY POWER DIVIDER

查询"SDL-110"供应商

## SURFACE MOUNT MODEL: SDL-110

WIDE BANDWIDTH

2 - 200 MHz

### FEATURES:

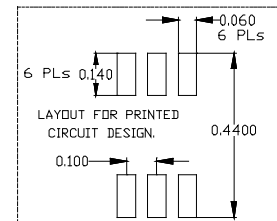
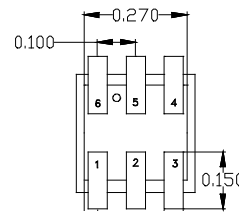
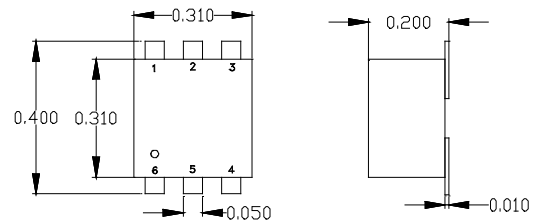
- ▶ Excellent Performance
- ▶ Wide Bandwidth
- ▶ Small Size, Surface Mount
- ▶ Moderate Power
- ▶ Applications: Signal Splitting & Low Power Combining



### SPECIFICATIONS (Rev. B 09/28/06)

|                             |                |                |           |
|-----------------------------|----------------|----------------|-----------|
| Frequency                   | 2 - 200 MHz    |                |           |
| Insertion Loss              | Freq. (MHz)    | dB (Typ.)      | dB (Max.) |
|                             | 2-20           | 0.6            | 0.8       |
|                             | 20-100         | 0.4            | 0.7       |
|                             | 100-200        | 0.7            | 1.0       |
| Isolation                   | Freq. (MHz)    | dB (Typ.)      | dB (Min.) |
|                             | 2-20           | 40             | 23        |
|                             | 20-100         | 32             | 23        |
|                             | 100-200        | 32             | 23        |
| Phase Unbalance             | Freq. (MHz)    | Degrees (Max.) |           |
|                             | 2-20           | 3              |           |
|                             | 20-100         | 3              |           |
|                             | 100-200        | 3              |           |
| Amplitude Unbalance         | Freq. (MHz)    | dB (Max.)      |           |
|                             | 2-20           | 0.4            |           |
|                             | 20-100         | 0.3            |           |
|                             | 100-200        | 0.4            |           |
| Input Power                 | 1 Watt (Max.)  |                |           |
| Output Impedance            | 50 Ohms (Nom.) |                |           |
| Operating Temperature Range | -20 to +70 °C  |                |           |

Package # 159



### PIN-OUT

| Input | Output | Case Gnd. |
|-------|--------|-----------|
| 6     | 1,3,4  | 2,5       |

# 3-WAY POWER DIVIDER

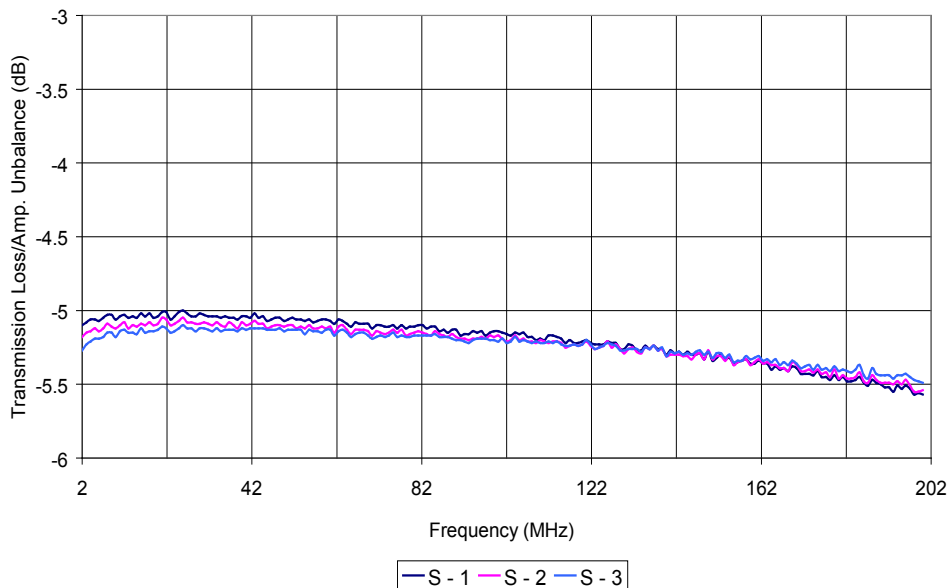
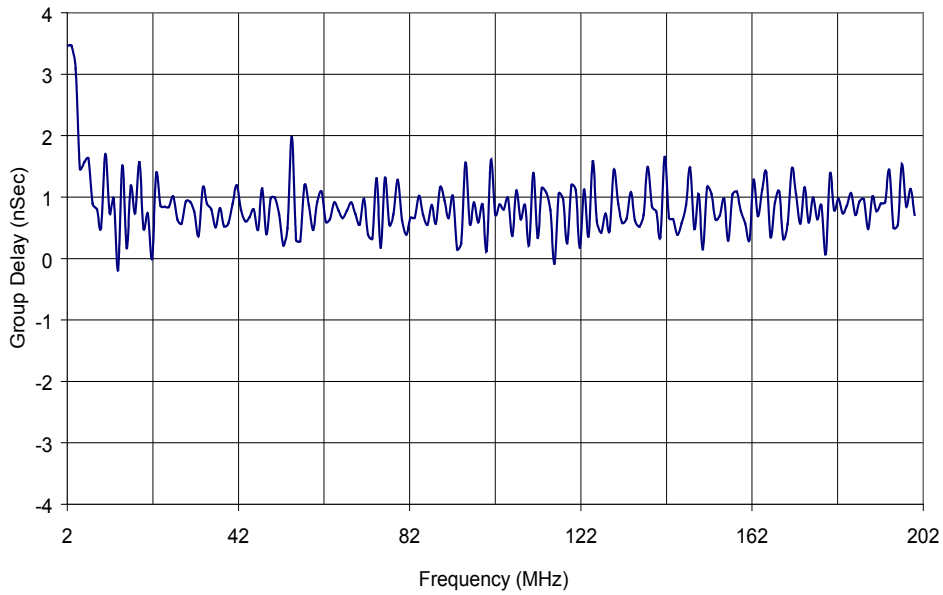
[查询"SDL-110"供应商](#)

## SURFACE MOUNT MODEL: SDL-110

WIDE BANDWIDTH

2 - 200 MHz

PERFORMANCE PLOTS



# 3-WAY POWER DIVIDER

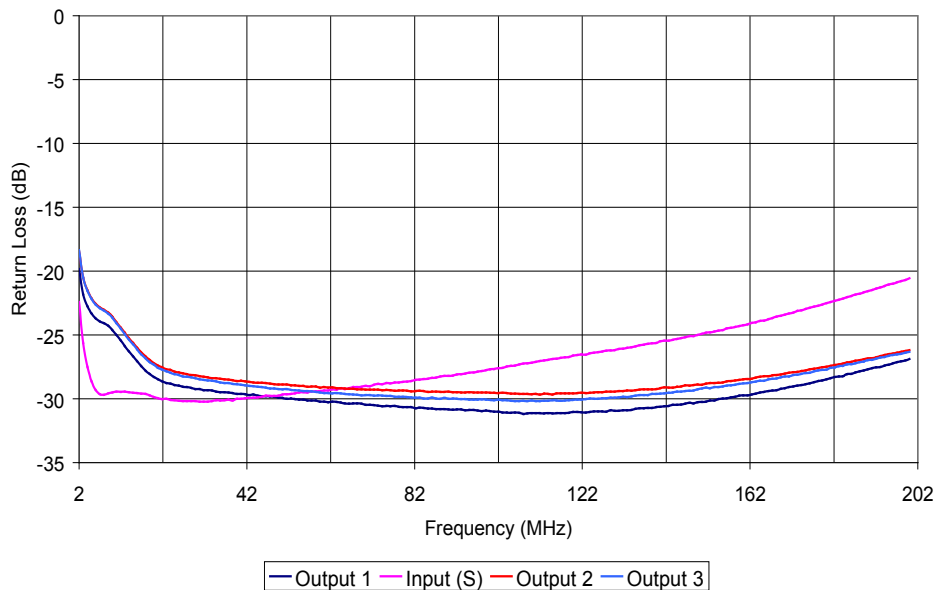
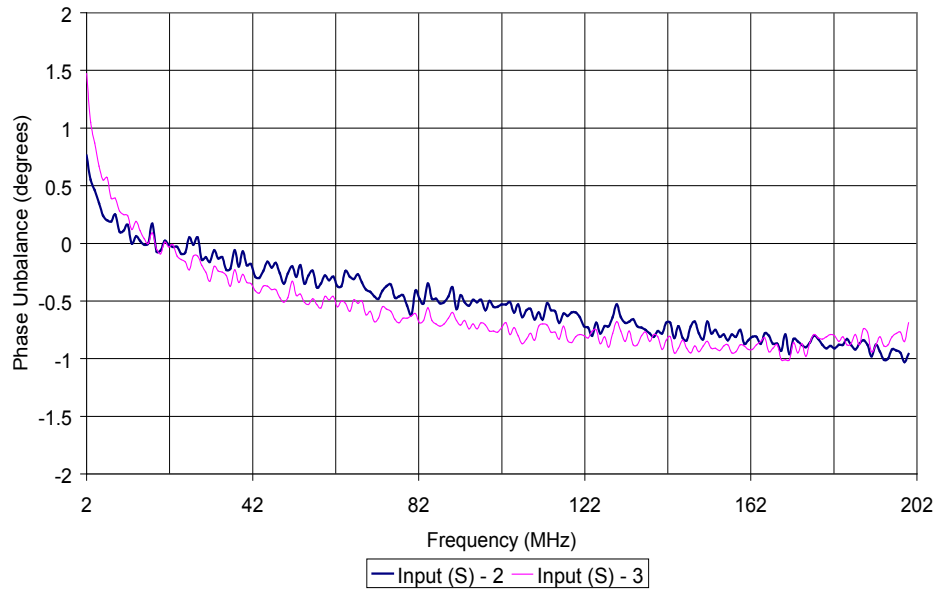
[查询"SDL-110"供应商](#)

## SURFACE MOUNT MODEL: SDL-110

WIDE BANDWIDTH

2 - 200 MHz

PERFORMANCE PLOTS



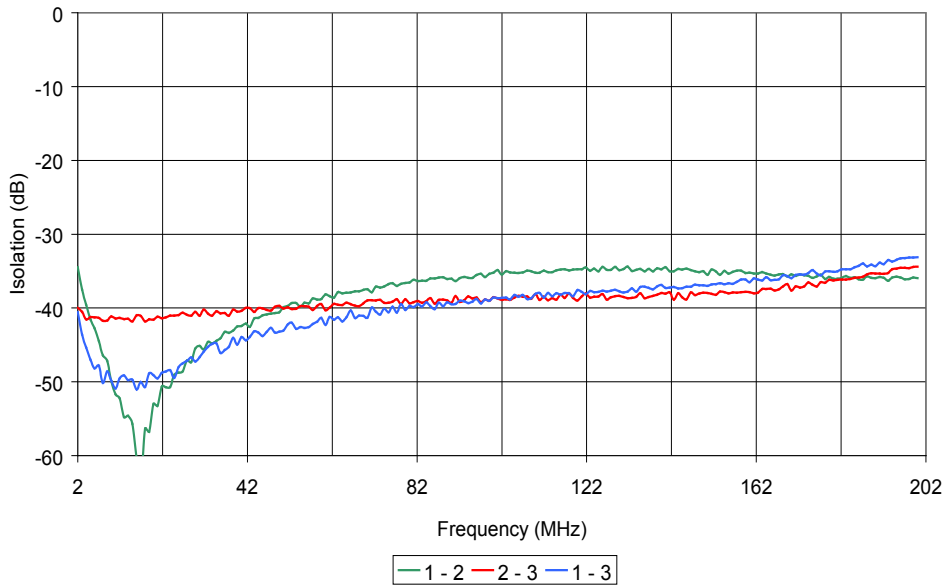
# 3-WAY POWER DIVIDER

[查询"SDL-110"供应商](#)

## SURFACE MOUNT MODEL: SDL-110

WIDE BANDWIDTH

2 - 200 MHz



PERFORMANCE PLOTS



Copyright © 2006 Synergy Microwave Corporation

201 McLean Boulevard • Paterson, New Jersey 07504 • Tel: (973) 881-8800 • Fax: (973) 881-8361

E-Mail: [sales@synergymwave.com](mailto:sales@synergymwave.com) • World Wide Web: <http://www.synergymwave.com>