

2.0mm PITCH PLUG RIGHT ANGLE TYPE

FOR 2.5" H.D.D CONNECTOR (MOTHER BOARD SIDE)

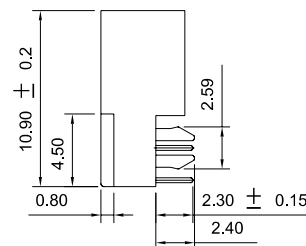
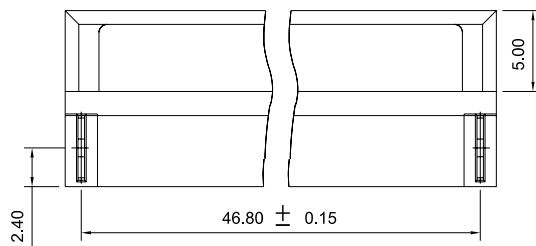
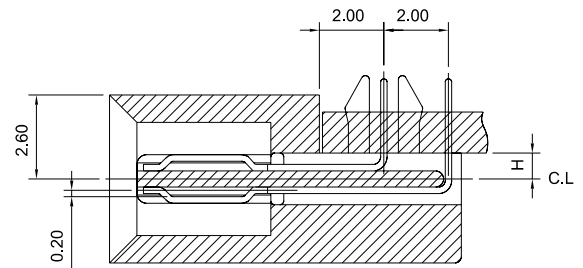
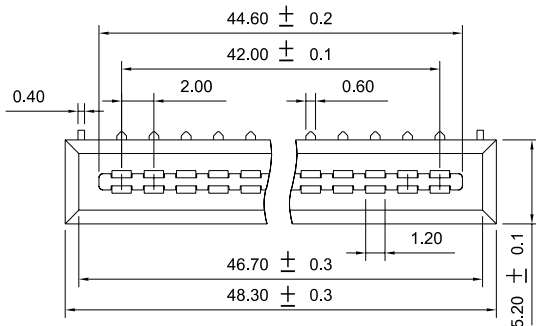


200221MR Series

Mates With SUYIN 200220FD Series

Specifications:

- 44 Circuits
- Insulator material : Black High Temp . Plastic
- Temp. Range : -40°C to +105°C
- Terminal Material : Pho. bronze
- Plating : Contact-Full Gold Plated
- Max. Current Rating : 1.5A
- Voltage Rating : 150V AC
- Dielectric Strength : 500V (Min. 60 seconds)

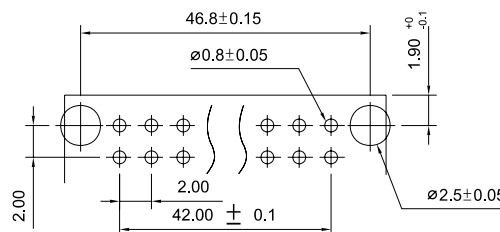


Order Information

200221MR044G5□□ZU
1 2 3 6 4 5

1. 'R' : Right Angle Dip Type
 2. No. of Pins
 3. Plating
'G5' : 30u" In Contact Area
 4. Color 'Z' : Black
 5. Package
'U' : Tube Package Without CAP
 6. Indicate Height
- Reference Page 11

Recommended P.C.B Layout



Dimensional Information

SUYIN P/NO.	DIM.H
200221MR044G500ZU	0.8
200221MR044G502ZU	2.6
200221MR044G503ZU	3.8
200221MR044G504ZU	6.5

2.0
mm