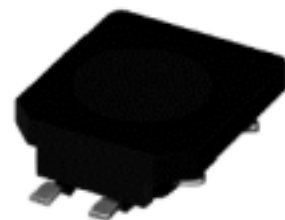


## Type: CLQ61B

### ◆ Product Description

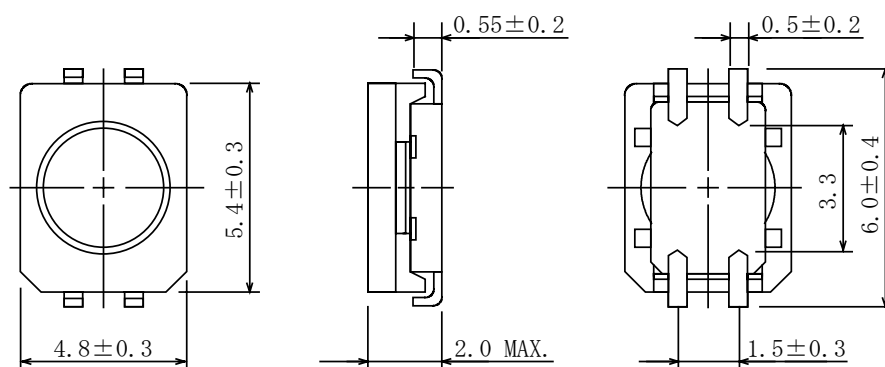
- $5.7 \times 5.1\text{mm}$  Max.(L×W), 2.0mm Max.(Height)
- Inductance Range:  $4.7 \mu\text{H} \sim 33 \mu\text{H}$ , Rated current range: 0.37A~0.80A
- In addition to the typical versions of parameters shown here, custom designs are available to meet your exact requirements



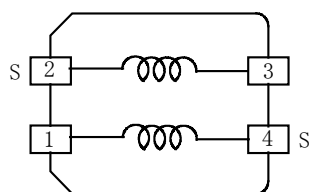
### ◆ Feature

- Magnetically shielded construction.
- Max. Operating frequency 1MHz, Max Operating power 700mW (1MHz)
- Ideally used in Digital still camera, Digital video camera, LCD TV, Portable equipment.
- RoHS Compliance

### ◆ Dimensions (mm)



### ◆ Schematics (Bottom)



"S" indicates winding start.

### ◆ Land Pattern (mm)



### ◆ Specification

Sample No.	Inductance (2-3) (100kHz/1.0V)	D.C.R. (2-3)	D.C.R. (4-1)
6335-T020	$10 \mu\text{H} \pm 30\%$ within	800m $\Omega$ Max.	2.10 $\Omega$ Max.

※ 1.Rated current: The D.C. current at which the inductance decreases to 90% of it's initial value or when  $\Delta t=40^\circ\text{C}$ , whichever is lower( $T_a=20^\circ\text{C}$ ).