

High Reliability Mixer

ADE-R20+

Level 7 (LO Power +7 dBm) 1500 to 2800 MHz



Maximum Ratings

Operating Temperature	-40°C to 85°C
Storage Temperature	-55°C to 100°C
RF Power	50mW
IF Current	40mA

Pin Connections

LO	6
RF	4
IF	3
GROUND	1,2,5

Features

- hermetically sealed ceramic quad
- low conversion loss, 5.8 dB typ.
- excellent L-R isolation, 30 dB typ.
- low profile package
- aqueous washable
- protected by US Patent 6,133,525

Applications

- digital cellular
- digital cordless phone
- PCN

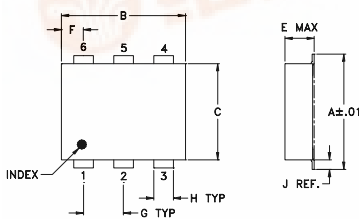
CASE STYLE: CD542

PRICE: \$5.35 ea. QTY. (10-49)

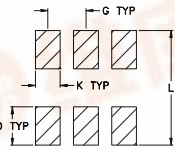
+ RoHS compliant in accordance with EU Directive (2002/95/EC)

The +Suffix has been added in order to identify RoHS Compliance. See our web site for RoHS Compliance methodologies and qualifications.

Outline Drawing



PCB Land Pattern



Suggested Layout, Tolerance to be within ±.002

Outline Dimensions (inch)

A	B	C	D	E	F	G
.272	.310	.220	.100	.112	.055	.100
6.91	7.87	5.59	2.54	2.84	1.40	2.54

H	J	K	L	wt
.030	.026	.065	.300	grams
0.76	0.66	1.65	7.62	0.20

Electrical Specifications

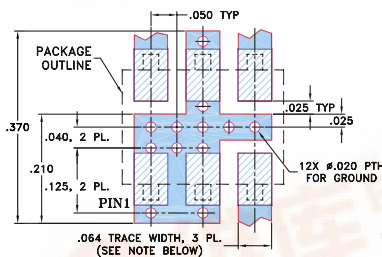
FREQUENCY (MHz)	CONVERSION LOSS (dB)	LO-RF ISOLATION (dB)		LO-IF ISOLATION (dB)		IP3 at center band (dBm)			
		Typ.	Min.	Typ.	Min.				
1500-2800	DC-500	5.8	0.10	8.0	30	22	28	15	12

1 dB COMP.: +1 dBm typ.

Typical Performance Data

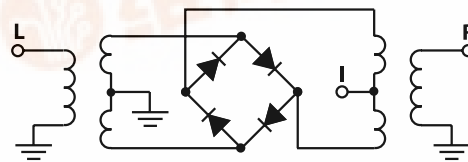
Frequency (MHz)	Conversion Loss (dB)	Isolation L-R (dB)	Isolation L-I (dB)	VSWR RF Port (:1)	VSWR LO Port (:1)	
						LO +7dBm
1460.00	1490.00	6.21	37.65	20.28	1.34	1.81
1560.00	1590.00	5.95	37.70	22.72	1.28	1.80
1660.00	1690.00	5.94	36.06	25.56	1.50	1.79
1740.00	1770.00	5.91	35.29	27.83	1.66	1.79
1840.00	1870.00	5.80	33.78	30.47	1.75	1.83
1920.00	1950.00	5.79	32.65	32.64	1.83	1.86
2020.00	2050.00	5.79	31.63	35.32	1.90	1.92
2100.00	2130.00	5.81	30.85	37.17	1.92	1.95
2200.00	2230.00	5.78	30.15	39.95	1.90	2.00
2280.00	2310.00	5.80	29.99	41.69	1.84	2.08
2380.00	2410.00	5.74	30.06	43.43	1.74	2.17
2460.00	2490.00	5.72	30.05	44.18	1.70	2.16
2560.00	2590.00	5.75	29.85	45.60	1.70	2.28
2640.00	2670.00	5.90	30.06	45.88	1.73	2.36
2740.00	2770.00	6.08	30.64	44.97	1.77	2.41
2820.00	2850.00	6.35	31.39	43.67	1.91	2.42

Demo Board MCL P/N: TB-02 Suggested PCB Layout (PL-051)



- NOTES: 1. TRACE WIDTH IS SHOWN FOR ROGERS R04350B WITH DIELECTRIC THICKNESS .030" ± .002"; COPPER: 1/2 OZ. EACH SIDE. FOR OTHER MATERIALS TRACE WIDTH MAY NEED TO BE MODIFIED.
 2. BOTTOM SIDE OF THE PCB IS CONTINUOUS GROUND PLANE.
 ■ DENOTES PCB COPPER LAYOUT WITH SMOBC (SOLDER MASK OVER BARE COPPER)
 ■ DENOTES COPPER LAND PATTERN FREE OF SOLDER MASK

Electrical Schematic



Mini-Circuits
 ISO 9001 ISO 14001 CERTIFIED

ALL NEW
minicircuits.com

The Design Engineers Search Engine Provides ACTUAL Data Instantly From MINI-CIRCUITS At: www.minicircuits.com

RF/IF MICROWAVE COMPONENTS

REV. OR
 M109914
 ADE-R20+
 ED-12872/8
 WL/TD/QL
 070516
 Page 1 of 2



