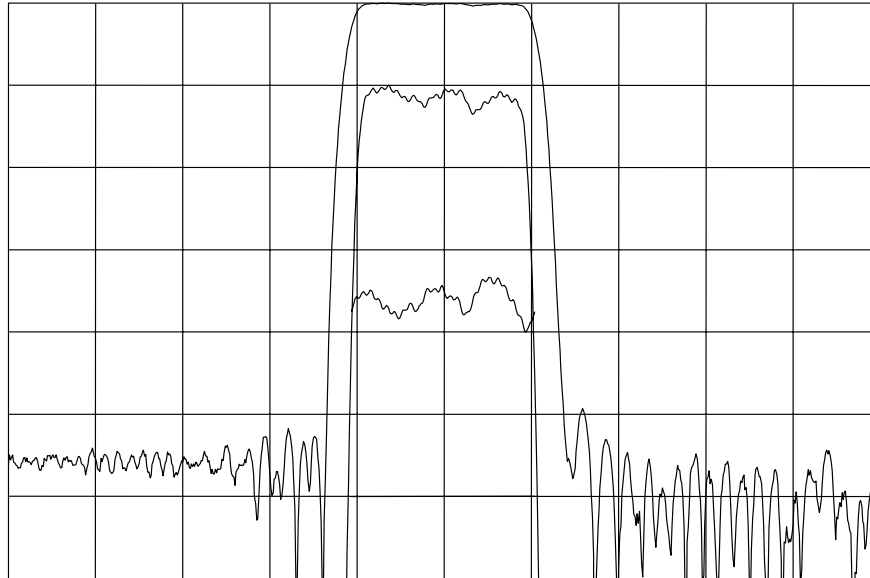




TYPICAL PERFORMANCE



Horizontal: 2 MHz/div

Vertical (from top):

Magnitude

10 dB/div

Magnitude

1 dB/div

Phase Linearity

5 deg/div

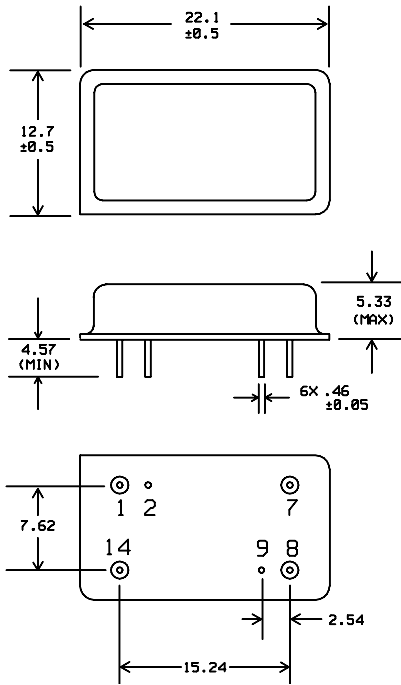
SPECIFICATION

Parameter	Min	Typ	Max	Units
Center Frequency (Fc) ¹	159.90	160.00	160.10	MHz
3 dB Bandwidth	4.00	4.17		MHz
40 dB Bandwidth		5.28	5.80	MHz
Delay		2.76		μsec
Input Power			+10	dBm
Insertion Loss		23.3	25.0	dB
Source and Load Impedance		50		Ω
Phase Linearity ²		2.7	5	deg p-p
Passband Variation ²		0.45	0.7	dB p-p
Rejection (10 to 156 MHz)	50	54		dB
Rejection (156 to Fo-2.9 MHz)	45	48		dB
Rejection (Fo+2.9 to 164 MHz)	45	48		dB
Rejection (164 to 280 MHz)	50	54		dB
Operating Temperature Range		23		°C

- Notes: 1. All specified bandwidths are centered at or referenced to this frequency.
2. Computed as the delta of the highest and lowest points inside the 3 dB Bandwidth.



PACKAGE OUTLINE

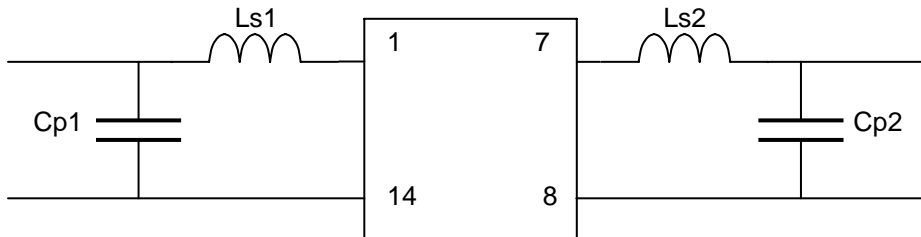


Units: mm

Pin Configuration:

- Input: 1
- Input Return: 14
- Output: 7
- Output Return: 8
- Ground: 2, 9

MATCHING CIRCUIT



Typical component values: Ls1 = 100 nH Ls2 = 100 nH
 Cp1 = 33 pF Cp2 = 24 pF

(Minimum inductor Q = 40)

Notes

- Maximum 2% tolerance matching components shall be used.
- Tuning values shown are for reference only. Optimum values may change depending upon board layout.

ISO 9001
Registered