

Dual Variable-Reluctance Sensor Interface IC

The CS1124 is a monolithic integrated circuit designed primarily to condition signals used to monitor rotating parts.

The CS1124 is a dual channel device. Each channel interfaces to a Variable Reluctance Sensor, and monitors the signal produced when a metal object is moved past that sensor. An output is generated that is a comparison of the input voltage and the voltage produced at the IN_{Adj} lead. The resulting square-wave is available at the OUT pin.

When the DIAG pin is high, the reference voltage at IN_{Adj} is increased. This then requires a larger signal at the input to trip the comparator, and provides for a procedure to test for an open sensor.

Features

- Dual Channel Capability
- Built-In Test Mode
- On-Chip Input Voltage Clamping
- Works from 5.0 V Supply
- Accurate Built-In Hysteresis

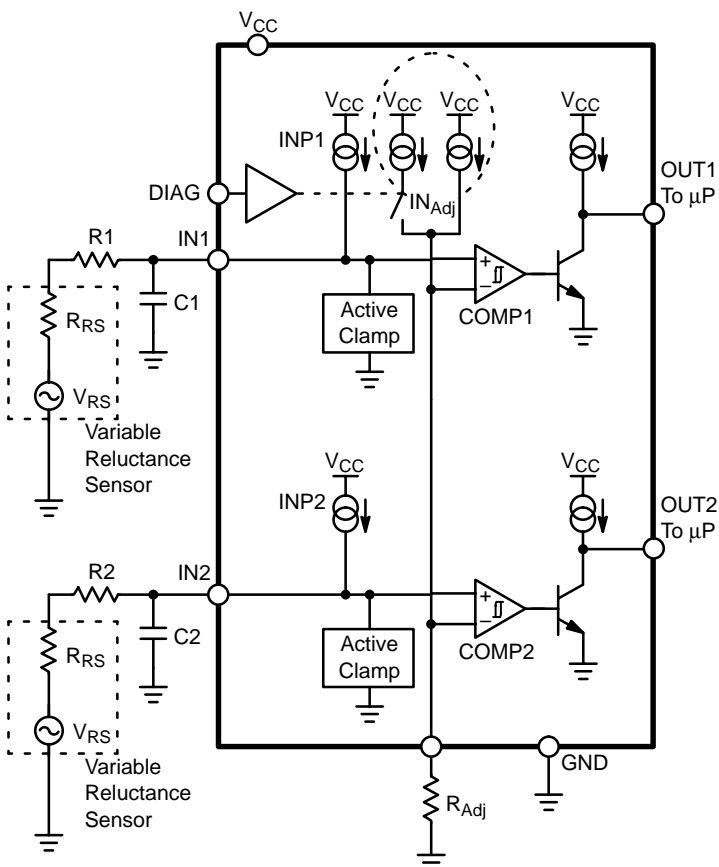


Figure 1. Block Diagram



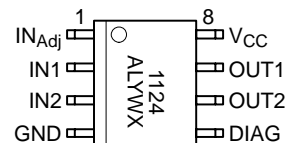
ON Semiconductor™

<http://onsemi.com>



SO-8
D SUFFIX
CASE 751

PIN CONNECTIONS AND MARKING DIAGRAM



A = Assembly Location
WL, L = Wafer Lot
YY, Y = Year
WW, W = Work Week

ORDERING INFORMATION

Device	Package	Shipping
CS1124YD8	SO-8	95 Units/Rail
CS1124YDR8	SO-8	2500 Tape & Reel

ABSOLUTE MAXIMUM RATINGS*

[查询“CS1124/D”供应商](#)

Rating	Value	Unit
Storage Temperature Range	–65 to 150	°C
Ambient Operating Temperature	–40 to 125	°C
Supply Voltage Range (continuous)	–0.3 to 7.0	V
Input Voltage Range (at any input, R1 = R2 = 22 k)	–250 to 250	V
Maximum Junction Temperature	150	°C
ESD Susceptibility (Human Body Model)	2.0	kV
Lead Temperature Soldering:	Reflow: (SMD styles only) (Note 1.)	230 peak
		°C

1. 60 second maximum above 183°C.

*The maximum package power dissipation must be observed.

ELECTRICAL CHARACTERISTICS (4.5 V < V_{CC} < 5.5 V, –40°C < T_A < 125°C, V_{DIAG} = 0; unless otherwise specified.)

Characteristic	Test Conditions	Min	Typ	Max	Unit
----------------	-----------------	-----	-----	-----	------

V_{CC} SUPPLY

Operating Current Supply	V _{CC} = 5.0 V	–	–	5.0	mA
--------------------------	-------------------------	---	---	-----	----

Sensor Inputs

Input Threshold – Positive	V _{DIAG} = Low V _{DIAG} = High	135 135	160 160	185 185	mV mV
Input Threshold – Negative	V _{DIAG} = Low V _{DIAG} = High	–185 135	–160 160	–135 185	mV mV
Input Bias Current (INP1, INP2)	V _{IN} = 0.336 V	–16	–11	–6.0	μA
Input Bias Current (DIAG)	V _{DIAG} = 0 V	–	–	1.0	μA
Input Bias Current Factor (K _I) (I _{NAdj} = INP × K _I)	V _{IN} = 0.336 V, V _{DIAG} = Low V _{IN} = 0.336 V, V _{DIAG} = High	– 152	100 155	– 157	%INP %INP
Bias Current Matching	INP1 or INP2 to I _{NAdj} ; V _{IN} = 0.336 V	–1.0	0	1.0	μA
Input Clamp – Negative	I _{IN} = –50 μA I _{IN} = –12 mA	–0.5 –0.5	–0.25 –0.30	0 0	V V
Input Clamp – Positive	I _{IN} = +12 mA	5.0	7.0	9.0	V
Output Low Voltage	I _{OUT} = 1.6 mA	–	0.2	0.4	V
Output High Voltage	I _{OUT} = –1.6 mA	V _{CC} – 0.5	V _{CC} – 0.2	–	V
Mode Change Time Delay	–	0	–	20	μs
Input to Output Delay	I _{OUT} = 1.0 mA	–	1.0	20	μs
Output Rise Time	C _{LOAD} = 30 pF	–	0.5	2.0	μs
Output Fall Time	C _{LOAD} = 30 pF	–	0.05	2.0	μs
Open–Sensor Positive Threshold	V _{DIAG} = High, R _{IN(Adj)} = 40 k. Note 2.	29.4	54	86.9	kΩ

Logic Inputs

DIAG Input Low Threshold	–	–	–	0.2 × V _{CC}	V
DIAG Input High Threshold	–	0.7 × V _{CC}	–	–	V
DIAG Input Resistance	V _{IN} = 0.3 × V _{CC} , V _{CC} = 5.0 V V _{IN} = V _{CC} , V _{CC} = 5.0 V	8.0 8.0	22 22	70 70	kΩ kΩ

2. This parameter is guaranteed by design, but not parametrically tested in production.

查询"CS1124/D"供应商

PACKAGE PIN DESCRIPTION*

PACKAGE PIN #	PIN SYMBOL	FUNCTION
SO-8		
1	IN _{Adj}	External resistor to ground that sets the trip levels of both channels. Functions for both diagnostic and normal mode.
2	IN1	Input to channel 1.
3	IN2	Input to channel 2.
4	GND	Ground.
5	DIAG	Diagnostic mode switch. Normal mode is low.
6	OUT2	Output of channel 2.
7	OUT1	Output of channel 1.
8	V _{CC}	Positive 5.0 volt supply input.

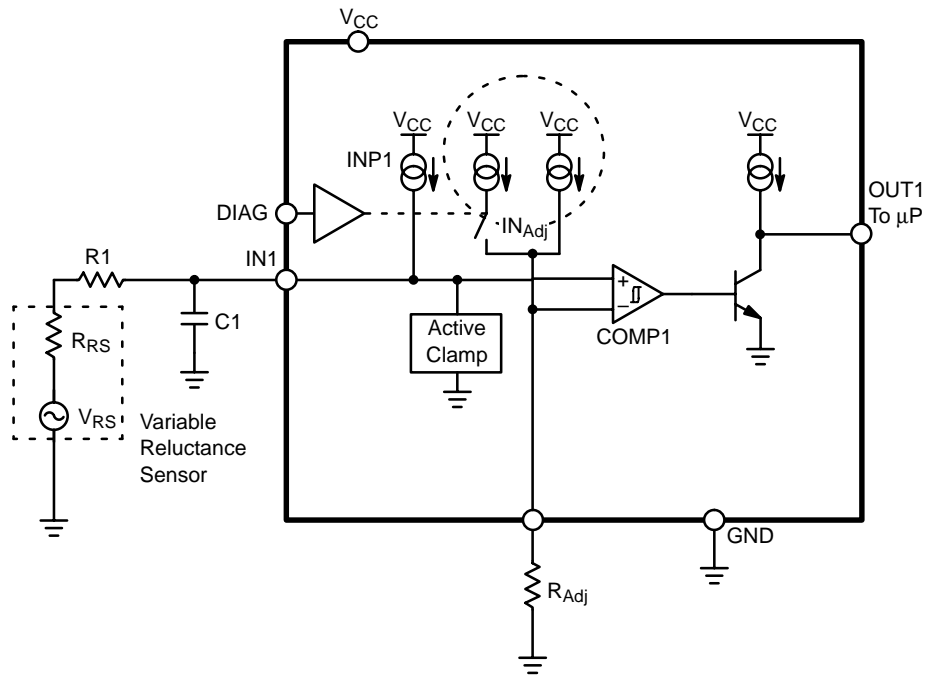


Figure 2. Application Diagram

THEORY OF OPERATION

NORMAL OPERATION

Figure 2 shows one channel of the CS1124 along with the necessary external components. Both channels share the IN_{Adj} pin as the negative input to a comparator. A brief description of the components is as follows:

V_{RS} – Ideal sinusoidal, ground referenced, sensor output – amplitude usually increases with frequency, depending on loading.

R_{RS} – Source impedance of sensor.

R1/R_{Adj} – External resistors for current limiting and biasing.

INP1/IN_{Adj} – Internal current sources that determine trip points via R1/R_{Adj}.

COMP1 – Internal comparator with built-in hysteresis set at 160 mV.

OUT1 – Output 0 V – 5.0 V square wave with the same frequency as V_{RS}.

By inspection, the voltage at the (+) and (–) terminals of COMP1 with V_{RS} = 0V are:

$$V^+ = \text{INP1}(R1 + R_{RS}) \quad (1)$$

[查询"CS1124/D"供应商](#) $V^- = -I_{NAdj} \times R_{Adj}$ (2)

As V_{RS} begins to rise and fall, it will be superimposed on the DC biased voltage at V^+ .

$$V^+ = INP1(R1 + RRS) + V_{RS} \quad (3)$$

To get comparator COMP1 to trip, the following condition is needed when crossing in the positive direction,

$$V^+ > V^- + V_{HYS} \quad (4)$$

(V_{HYS} is the built-in hysteresis set to 160 mV), or when crossing in the negative direction,

$$V^+ < V^- - V_{HYS} \quad (5)$$

Combining equations 2, 3, and 4, we get:

$$INP1(R1 + RRS) + V_{RS} > I_{NAdj} \times R_{Adj} + V_{HYS} \quad (6)$$

therefore,

$$V_{RS(+TRP)} < I_{NAdj} \times R_{Adj} - INP1(R1 + RRS) + V_{HYS} \quad (7)$$

It should be evident that tripping on the negative side is:

$$V_{RS(-TRP)} < I_{NAdj} \times R_{Adj} - INP1(R1 + RRS) - V_{HYS} \quad (8)$$

In normal mode,

$$INP1 = I_{NAdj} \quad (9)$$

We can now re-write equation (7) as:

$$V_{RS(+TR)} > INP1(R_{Adj} - R1 - RRS) + V_{HYS} \quad (10)$$

By making

$$R_{Adj} = R1 + RRS \quad (11)$$

you can detect signals with as little amplitude as V_{HYS} .

A design example is given in the applications section.

OPEN SENSOR PROTECTION

The CS1124 has a DIAG pin that when pulled high (5.0 V), will increase the I_{NAdj} current source by roughly 50%.

Equation (7) shows that a larger $V_{RS(+TRP)}$ voltage will be needed to trip comparator COMP1. However, if no V_{RS} signal is present, then we can use equations 1, 2, and 4 (equation 5 does not apply in this mode) to get:

$$INP1(R1 + RRS) > INP1 \times K_I \times R_{Adj} + V_{HYS} \quad (12)$$

Since RRS is the only unknown variable we can solve for RRS ,

$$RRS = \frac{INP1 \times K_I \times R_{Adj} + V_{HYS}}{INP1} - R1 \quad (13)$$

Equation (13) shows that if the output switches states when entering the diag mode with $V_{RS} = 0$, the sensor impedance must be greater than the above calculated value. This can be very useful in diagnosing intermittent sensor.

INPUT PROTECTION

As shown in Figure 2, an active clamp is provided on each input to limit the voltage on the input pin and prevent substrate current injection. The clamp is specified to handle ± 12 mA. This puts an upper limit on the amplitude of the sensor output. For example, if $R1 = 20$ k, then

$$V_{RS(MAX)} = 20 \text{ k} \times 12 \text{ mA} = 240 \text{ V}$$

Therefore, the $V_{RS(pk-pk)}$ voltage can be as high as 480 V.

The CS1124 will *typically* run at a frequency up to 1.8 MHz if the input signal does not activate the positive or negative input clamps. Frequency performance will be lower when the positive or negative clamps are active. *Typical* performance will be up to a frequency of 680 kHz with the clamps active.

[查询"CS1124/D"供应商](#)

CIRCUIT DESCRIPTION

Figure 3 shows the part operating near the minimum input thresholds. As the sin wave input threshold is increased, the low side clamps become active (Figure 4). Increasing the amplitude further (Figure 5), the high-side clamp becomes active. These internal clamps allow for voltages up to -250 V and 250 V on the sensor side of the setup (with $R1 = R2 = 22\text{ k}$) (reference the diagram page 1).

Figure 6 shows the effect using the diagnostic (DIAG) function has on the circuit. The input threshold (negative) is switched from a threshold of -160 mV to $+160\text{ mV}$ when DIAG goes from a low to a high. There is no hysteresis when DIAG is high.

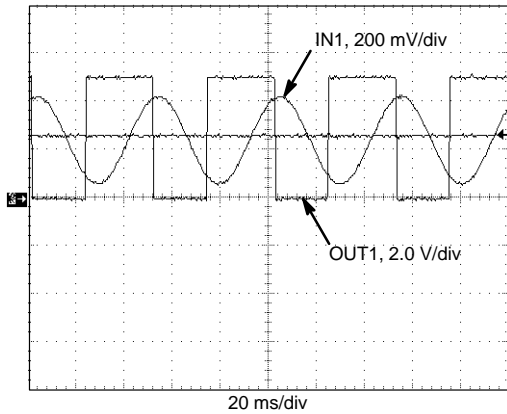


Figure 3. Minimum Threshold Operation

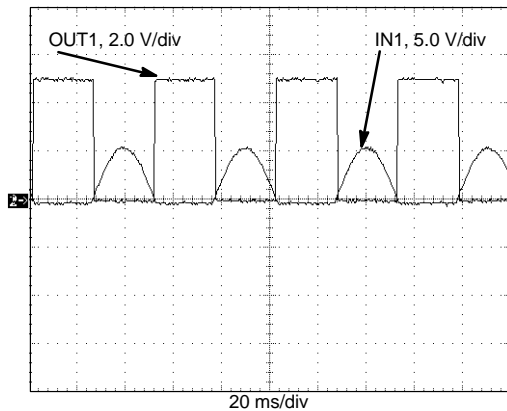


Figure 4. Low-Side Clamp

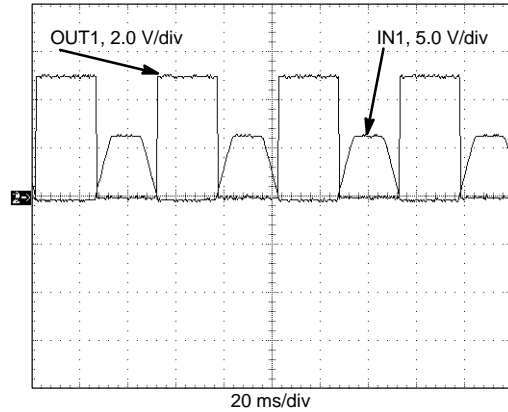


Figure 5. Low- and High-Side Clamps

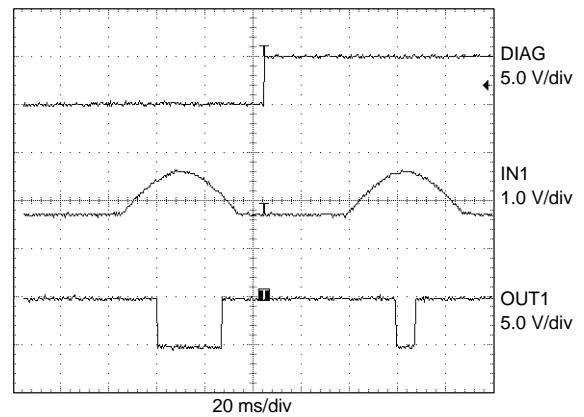


Figure 6. Diagnostic Operation

[查询"CS1124/D"供应商](#)

APPLICATION INFORMATION

Referring to Figure 2, the following will be a design example given these system requirements:

$$R_{RS} = 1.5 \text{ k}\Omega \text{ (> } 12 \text{ k}\Omega \text{ is considered open)}$$

$$V_{RS(\text{MAX})} = 120 \text{ V}_{\text{pk}}$$

$$V_{RS(\text{MIN})} = 250 \text{ mV}_{\text{pk}}$$

$$F_{VRS} = 10 \text{ kHz @ } V_{RS(\text{MIN})} = 40 \text{ V}_{\text{pk-pk}}$$

1. Determine tradeoff between R1 value and power rating. (use 1/2 watt package)

$$P_D = \frac{\left(\frac{120}{\sqrt{2}}\right)^2}{R_1} < 1/2 \text{ W}$$

Set $R_1 = 15 \text{ k}$. (The clamp current will then be $120/15 \text{ k} = 8.0 \text{ mA}$, which is less than the 12 mA limit.)

2. Determine R_{Adj}

Set R_{Adj} as close to $R_1 + R_{RS}$ as possible.

Therefore, $R_{\text{Adj}} = 17 \text{ k}$.

3. Determine $V_{RS(+TRP)}$ using equation (7).

$$V_{RS(+TRP)} = 11\mu\text{A} \times 17\text{k} - 11\mu\text{A}(15\text{k} + 1.5\text{k}) + 160\text{mV}$$

$$V_{RS(+TRP)} = 166 \text{ mV typical} \\ \text{(easily meets } 250 \text{ mV minimum)}$$

4. Calculate worst case $V_{RS(+TRP)}$

Examination of equation (7) and the spec reveals the worst case trip voltage will occur when:

$$V_{\text{HYS}} = 180 \text{ mV}$$

$$I_{\text{NAdj}} = 16 \mu\text{A}$$

$$I_{\text{NP1}} = 15 \mu\text{A}$$

$$R_1 = 14.25 \text{ k (5\% low)}$$

$$R_{\text{Adj}} = 17.85 \text{ k (5\% High)}$$

$$V_{RS(+)}_{\text{MAX}} = 16 \mu\text{A}(17.85 \text{ k}) \\ - 15\mu\text{A}(14.25 \text{ k} + 1.5 \text{ k}) + 180 \text{ mV} \\ = 229 \text{ mV}$$

which is still less than the 250 mV minimum amplitude of the input.

5. Calculate C1 for low pass filtering

Since the sensor guarantees $40 \text{ V}_{\text{pk-pk}}$ @ 10 kHz , a low pass filter using R_1 and C_1 can be used to eliminate high frequency noise without affecting system performance.

$$\text{Gain Reduction} = \frac{0.29 \text{ V}}{20 \text{ V}} = 0.0145 = -36.7 \text{ dB}$$

Therefore, a cut-off frequency, f_C , of 145 Hz could be used.

$$C_1 \leq \frac{1}{2\pi f_C R_1} \leq 0.07 \mu\text{F}$$

Set $C_1 = 0.047 \mu\text{F}$.

6. Calculate the minimum R_{RS} that will be indicated as an open circuit. (DIAG = 5.0 V)

Rearranging equation (7) gives

$$R_{RS} = \frac{\left[V_{\text{HYS}} + [I_{\text{NP1}} \times K_I \times R_{\text{Adj}}] - V_{RS(+TRP)} \right]}{I_{\text{NP1}}} - R_1$$

But, $V_{RS} = 0$ during this test, so it drops out.

Using the following as worst case Low and High:

	Worst Case Low (R_{RS})	Worst Case High (R_{RS})
I_{NAdj}	$23.6 \mu\text{A} = 15 \mu\text{A} \times 1.57$	$10.7 \mu\text{A} = 7.0 \mu\text{A} \times 1.53$
R_{Adj}	16.15 k	17.85 k
V_{HYS}	135 mV	185 mV
I_{NP1}	$16 \mu\text{A}$	$6.0 \mu\text{A}$
R_1	15.75 k	14.25 k
K_I	1.57	1.53

$$R_{RS} = \frac{135 \text{ mV} + 23.6 \mu\text{A} \times 16.15 \text{ k}}{16 \mu\text{A}} - 15.75 \text{ k} \\ = 16.5 \text{ k}$$

Therefore,

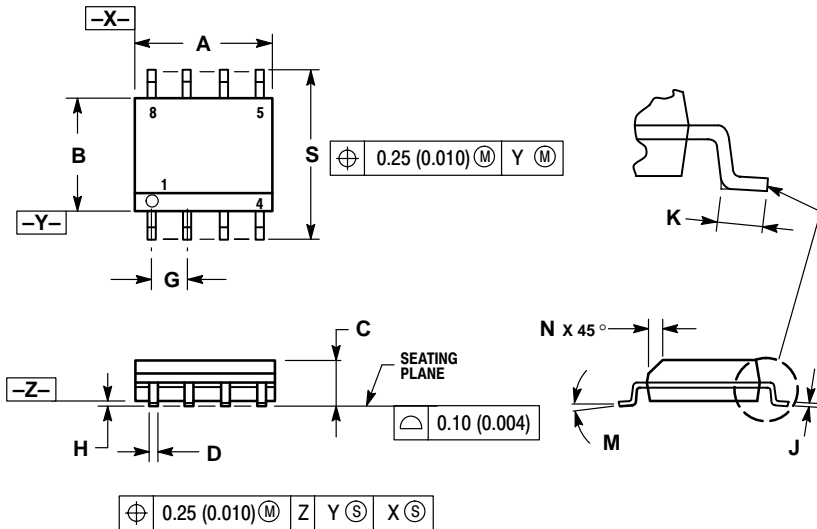
$$R_{RS(\text{MIN})} = 16.5 \text{ k (meets } 12 \text{ k system spec)}$$

and,

$$R_{RS(\text{MAX})} = \frac{185 \text{ mV} + 10.7 \mu\text{A} \times 17.85 \text{ k}}{6.0 \mu\text{A}} - 14.25 \text{ k} \\ = 48.4 \text{ k}$$

PACKAGE DIMENSIONS

SO-8
D SUFFIX
CASE 751-07
ISSUE V



NOTES:

1. DIMENSIONING AND TOLERANCING PER ANSI Y14.5M, 1982.
2. CONTROLLING DIMENSION: MILLIMETER.
3. DIMENSION A AND B DO NOT INCLUDE MOLD PROTRUSION.
4. MAXIMUM MOLD PROTRUSION 0.15 (0.006) PER SIDE.
5. DIMENSION D DOES NOT INCLUDE DAMBAR PROTRUSION. ALLOWABLE DAMBAR PROTRUSION SHALL BE 0.127 (0.005) TOTAL IN EXCESS OF THE D DIMENSION AT MAXIMUM MATERIAL CONDITION.

PACKAGE THERMAL DATA

Parameter		SO-8	Unit
R _{θJC}	Typical	45	°C/W
R _{θJA}	Typical	165	°C/W

[查询"CS1124/D"供应商](#)

ON Semiconductor and  are trademarks of Semiconductor Components Industries, LLC (SCILLC). SCILLC reserves the right to make changes without further notice to any products herein. SCILLC makes no warranty, representation or guarantee regarding the suitability of its products for any particular purpose, nor does SCILLC assume any liability arising out of the application or use of any product or circuit, and specifically disclaims any and all liability, including without limitation special, consequential or incidental damages. "Typical" parameters which may be provided in SCILLC data sheets and/or specifications can and do vary in different applications and actual performance may vary over time. All operating parameters, including "Typicals" must be validated for each customer application by customer's technical experts. SCILLC does not convey any license under its patent rights nor the rights of others. SCILLC products are not designed, intended, or authorized for use as components in systems intended for surgical implant into the body, or other applications intended to support or sustain life, or for any other application in which the failure of the SCILLC product could create a situation where personal injury or death may occur. Should Buyer purchase or use SCILLC products for any such unintended or unauthorized application, Buyer shall indemnify and hold SCILLC and its officers, employees, subsidiaries, affiliates, and distributors harmless against all claims, costs, damages, and expenses, and reasonable attorney fees arising out of, directly or indirectly, any claim of personal injury or death associated with such unintended or unauthorized use, even if such claim alleges that SCILLC was negligent regarding the design or manufacture of the part. SCILLC is an Equal Opportunity/Affirmative Action Employer.

PUBLICATION ORDERING INFORMATION**NORTH AMERICA Literature Fulfillment:**

Literature Distribution Center for ON Semiconductor
P.O. Box 5163, Denver, Colorado 80217 USA
Phone: 303-675-2175 or 800-344-3860 Toll Free USA/Canada
Fax: 303-675-2176 or 800-344-3867 Toll Free USA/Canada
Email: ONlit@hibbertco.com
Fax Response Line: 303-675-2167 or 800-344-3810 Toll Free USA/Canada

N. American Technical Support: 800-282-9855 Toll Free USA/Canada

EUROPE: LDC for ON Semiconductor – European Support

German Phone: (+1) 303-308-7140 (Mon-Fri 2:30pm to 7:00pm CET)
Email: ONlit-german@hibbertco.com

French Phone: (+1) 303-308-7141 (Mon-Fri 2:00pm to 7:00pm CET)
Email: ONlit-french@hibbertco.com

English Phone: (+1) 303-308-7142 (Mon-Fri 12:00pm to 5:00pm GMT)
Email: ONlit@hibbertco.com

EUROPEAN TOLL-FREE ACCESS*: 00-800-4422-3781

*Available from Germany, France, Italy, UK, Ireland

CENTRAL/SOUTH AMERICA:

Spanish Phone: 303-308-7143 (Mon-Fri 8:00am to 5:00pm MST)
Email: ONlit-spanish@hibbertco.com

ASIA/PACIFIC: LDC for ON Semiconductor – Asia Support

Phone: 303-675-2121 (Tue-Fri 9:00am to 1:00pm, Hong Kong Time)
Toll Free from Hong Kong & Singapore:
001-800-4422-3781
Email: ONlit-asia@hibbertco.com

JAPAN: ON Semiconductor, Japan Customer Focus Center
4-32-1 Nishi-Gotanda, Shinagawa-ku, Tokyo, Japan 141-0031
Phone: 81-3-5740-2745

Email: r14525@onsemi.com

ON Semiconductor Website: <http://onsemi.com>

For additional information, please contact your local Sales Representative.