

[查询"38720-7503"供应商](#)

# .375" PCB Barrier Terminal Strip

## Description

The series 72 PCB terminal strip is a workhorse and our most popular product series. The product can be configured from 15 to 25 Amps and from 150 to 300 Volts.

The product is available in standard and tri-barrier construction and can be configured with a broad selection of screws, hardware, mounting and terminal options.

Made in the USA, all Beau terminal blocks embody the highest quality standards in the industry-using the finest materials and world class manufacturing processes. They meet or exceed all applicable industry standards.

## Features

- **Standard and Tri-barrier construction** is available to provide the packaging options you need.
- **Robust and durable**, 72 series screw terminals are ultrasonically welded into the thermoplastic insulator, eliminating terminal twisting and associated solder joint failure.
- **Molded to exact length**, with no ugly saw cuts, Beau terminal strips make your products look more professional.
- **Wide variety of options.** Our broad range of screw, terminal, hardware and mounting options allows us to save you assembly costs and improve interconnect performance.



## PRODUCT RATINGS

### #6-32 BINDING HEAD SCREW

|            |         |                        |
|------------|---------|------------------------|
| <b>UL</b>  | Class B | 15 Amps @ 300 V 14 AWG |
|            | Class C | 15 Amps @ 150 V 14 AWG |
| <b>CSA</b> | Class B | 20 Amps @ 300 V 14 AWG |
|            | Class C | 20 Amps @ 300 V 14 AWG |

### #6-32 WIRE CLAMP SCREW

|            |         |                        |
|------------|---------|------------------------|
| <b>UL</b>  | Class B | 20 Amps @ 300 V 12 AWG |
|            | Class C | 20 Amps @ 150 V 12 AWG |
| <b>CSA</b> | Class B | 25 Amps @ 300 V 12 AWG |
|            | Class C | 25 Amps @ 300 V 12 AWG |

NOTE: 3.5M screws carry #6-32 screw ratings.

## TECHNICAL SPECIFICATIONS

### ELECTRICAL

|     |               |
|-----|---------------|
| DWV | 10500 VDC     |
| IR  | >5000 Megohms |

### MECHANICAL

|                   |              |
|-------------------|--------------|
| Tightening torque | 12 in-lbs.   |
| Maximum torque    | 13 in-lbs.   |
| Wire strip length | 5/16"        |
| Wire range        | 12 to 24 AWG |

### ENVIRONMENTAL

|                           |       |
|---------------------------|-------|
| Continuous Use Temp       |       |
| RTI electrical            | 110°C |
| RTI mechanical w/o impact | 110°C |

## OPTIONS

|        |                                      |
|--------|--------------------------------------|
| -45    | Slotted screw                        |
| -47    | Screws up, wire ready                |
| -49    | Brass, phillips/slotted screw        |
| -45-56 | Stainless steel screw, slotted       |
| -50    | Clamp washer, phillips/slotted screw |
| -58    | No screws, barrier only              |
| -59    | Screws supplied unassembled          |
| -C     | No mounting ends                     |
| -E     | Solid mounting ends                  |
| -F     | Rap-attach mounts                    |
| -M     | 3.5 M screw, slotted                 |
| -P     | .040" standoff pads                  |
| -V     | 130°C insulator                      |

## AGENCY LISTINGS

|            |                 |
|------------|-----------------|
| <b>UL</b>  | File No. E48521 |
|            | Guide No. XCFR2 |
| <b>CSA</b> | File No. 025562 |

## MATERIALS

|           |   |
|-----------|---|
| Insulator | Thermoplastic, UL94V-0, black                       |
| Terminal  | Brass, tin-lead plate                               |
| Screws    | #6-32, phillips/slotted, steel, zinc chromate plate |

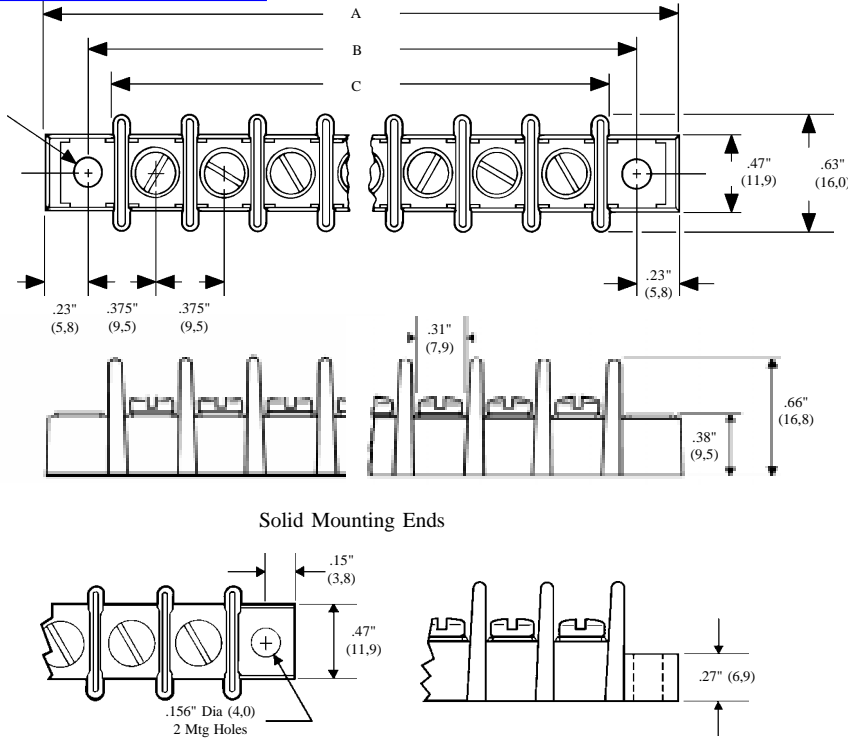
## HOW TO ORDER

|          |                |              |                                   |          |          |          |
|----------|----------------|--------------|-----------------------------------|----------|----------|----------|
| <b>7</b> | <b>2</b>       | <b>X</b>     | <b>X</b>                          | <b>X</b> | <b>X</b> | <b>X</b> |
| SERIES   | TERMINAL STYLE | NO. OF POLES | OPTIONS                           |          |          |          |
|          | 123            | 2 to 26      | (Dash #s above and opposite page) |          |          |          |
|          | 567            |              | and                               |          |          |          |
|          | 89             |              | opposite page)                    |          |          |          |

\*Consult factory for combinations of screw options.

Molex Industrial Division  
 New England Operations  
 Gilford, NH 03246-6600  
 Phone (603) 524-5101  
 Fax (603) 524-1627  
 Internet www.beauint.com

查询"38720-7503"供应商



| No. of Circuits | A     |      | B     |      | C    |      |
|-----------------|-------|------|-------|------|------|------|
|                 | in.   | mm   | in.   | mm   | in.  | mm   |
| 2               | 1.58  | 78,3 | 1.13  | 28,6 | .83  | 21,1 |
| 3               | 1.96  | 49,7 | 1.50  | 38,1 | 1.21 | 30,7 |
| 4               | 2.33  | 59,2 | 1.88  | 47,6 | 1.58 | 40,2 |
| 5               | 2.71  | 68,8 | 2.25  | 57,2 | 1.96 | 49,7 |
| 6               | 3.08  | 78,3 | 2.63  | 66,7 | 2.33 | 59,2 |
| 7               | 3.46  | 87,8 | 3.00  | 76,2 | 2.71 | 68,8 |
| 8               | 3.83  | 97,3 | 3.38  | 85,7 | 3.08 | 78,3 |
| 9               | 4.21  | 107  | 3.75  | 95,3 | 3.46 | 87,8 |
| 10              | 4.58  | 116  | 4.13  | 105  | 3.83 | 97,3 |
| 11              | 4.96  | 126  | 4.50  | 114  | 4.21 | 107  |
| 12              | 5.33  | 135  | 4.88  | 124  | 4.58 | 116  |
| 13              | 5.71  | 145  | 5.25  | 133  | 4.96 | 126  |
| 14              | 6.08  | 154  | 5.63  | 143  | 5.33 | 135  |
| 15              | 6.46  | 164  | 6.00  | 152  | 5.71 | 145  |
| 16              | 6.83  | 174  | 6.38  | 162  | 6.08 | 154  |
| 17              | 7.21  | 183  | 6.75  | 171  | 6.46 | 164  |
| 18              | 7.58  | 193  | 7.13  | 181  | 6.83 | 174  |
| 19              | 7.96  | 202  | 7.50  | 191  | 7.21 | 183  |
| 20              | 8.33  | 212  | 7.88  | 200  | 7.58 | 193  |
| 21              | 8.71  | 221  | 8.25  | 210  | 7.96 | 202  |
| 22              | 9.08  | 231  | 8.63  | 219  | 8.33 | 212  |
| 23              | 9.46  | 240  | 9.00  | 229  | 8.71 | 221  |
| 24              | 9.83  | 250  | 9.38  | 238  | 9.08 | 231  |
| 25              | 10.21 | 259  | 9.75  | 248  | 9.46 | 240  |
| 26              | 10.58 | 269  | 10.13 | 257  | 9.83 | 250  |

TERMINAL STYLES

**STYLE 1**  
No PC Terminal

**STYLE 2**  
Insulated Solder Turret

**STYLE 3**  
Insulated PC

**STYLE 5**  
PC

**STYLE 6**  
Solder Turret

**STYLE 7**  
Wire Wrap

**STYLE 8**  
Right Angle PC

**STYLE 9**  
Insulated Quick Connect