



Battery Connector

FEATURES AND SPECIFICATIONS

[查询"47204"供应商](#)

Molex offers Battery Connectors for mobile applications.

In mobile applications, battery efficiency plays an important part in the utilization time of the device. Proper battery contact, efficient electrical properties, physical size of connector are some of the major design considerations.

Working together with major customers in the mobile device markets, Molex has developed a comprehensive range of battery connectors that addresses most of these applications design concerns. With working heights of 1.50mm to 5.50mm and circuit sizes of 2 to 5, Molex's battery connectors brings forth flexibility in design solutions for the customers.

47182

Vertical, SMT

47204

Right Angle, SMT

47274

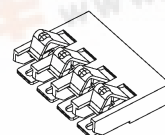
Right Angle, SMT

47280

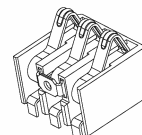
Right Angle, SMT

48232

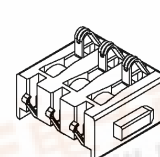
Parallel, SMT



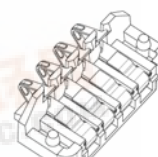
47182



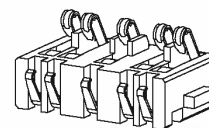
47204



47274



47280



48232

Features	Benefits
<ul style="list-style-type: none"> Stable normal force 	<ul style="list-style-type: none"> Secure contact
<ul style="list-style-type: none"> Various configurations and contact heights 	<ul style="list-style-type: none"> Meets specific application needs
<ul style="list-style-type: none"> High number of mating cycles 	<ul style="list-style-type: none"> Meets requirements of most demanding users
<ul style="list-style-type: none"> Overall small size 	<ul style="list-style-type: none"> Meets tight-packaging needs

SPECIFICATIONS

Reference Information

Packaging: Refer to order table

UL File No.:

CSA File No.:

Mates With:

Designed In:mm

Electrical

Voltage: Refer to order table

Current: Refer to order table

Contact Resistance: Refer to order table

Dielectric Withstanding Voltage: Refer to order table

Insulation Resistance: Refer to order table

Mechanical

Contact Insertion Force:

47182, 47274, 47204 : 1.02N (0.67lb)

Durability: Refer to order table

Physical

Housing: Thermoplastic, JL 94V-0

Contact:

47182, 47204, 47274, 48232 Copper (Cu)

Alloy

47280 Beryllium Copper (BeCu)

Plating:

Contact Area — Refer to order table

Underplating — Nickel (Ni)

Operating Temperature: Refer to order table



MARKETS AND APPLICATIONS

[查询"47204"供应商](#)

- **Mobile phones**
- **PDA's**
- **Handheld GPS units**

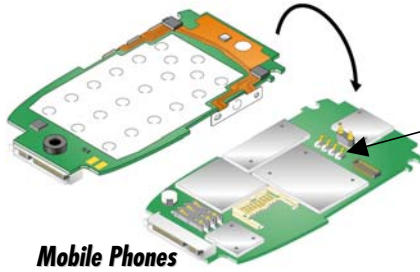


Battery Connector

- 47182** Vertical, SMT
- 47204** Right Angle, SMT
- 47274** Right Angle, SMT
- 47280** Right Angle, SMT
- 48232** Parallel, SMT



PDA's



Mobile Phones

Battery Connector



Handheld GPS

ORDERING INFORMATION

Description	Lead-Free Order No.	Circuit Size	Amps (Max)	Voltage-max	Withstanding Voltage	Plating Contact	Overall Length	First-to-Last Circuit	Durability
1.50mm (.059") Pitch Battery Connector, Parallel 5 Circuits, Compression Contact to PCB	48232-0001	5	1.5A	125V	500V AC	0.25µm (10µ") Gold (Au)	N.A.	N.A.	10,000 cycles
2.00mm (.079") Pitch Battery Connector, Vertical Surface Mount, Width 5.98mm (.235"), Working Height 2.10mm (.083")	47182-1001	2	1.0A	200V	100V AC	0.76µm (30µ") Gold (Au)	4.10mm (.161")	2.00mm (.079")	10,000 cycles
	47182-0001	4					8.10mm (.319")	6.00mm (.236")	
2.00mm (.079") Pitch Battery Connector, Right Angle Surface Mount	47280-0001	4	1.5A	200V	500V DC	0.76µm (30µ") Gold (Au)	11.98mm (.472")	6.00mm (.236")	10,000 cycles
2.50mm (.098") Pitch Battery Connector, Right Angle Compression Contact to PCB	47274-0001	3	1.0A	200V	1000V AC	0.76µm (30µ") Gold (Au)	10.00mm (.394")	5.00mm (.197")	10,000 cycles
2.50mm (.098") Pitch Battery Connector, Right Angle Surface Mount, Width 7.00mm (.276"), Working Height 5.50mm (.217")	47204-0001	3	1.0A	200V	100V AC	0.40µm (16µ") Gold (Au)	7.50mm (.295")	5.00mm (.197")	10,000 cycles



Bringing People & Technology Together, WorldwideSM

Americas Headquarters
2222 Wellington Ct.
Lisle, Illinois 60532 USA
1-800-78MOLEX
amerinfo@molex.com

Far East North Headquarters
Yamato, Kanagawa, Japan
81-462-65-2324
feninfo@molex.com

Far East South Headquarters
Jurong, Singapore
65-6-268-6868
fesinfo@molex.com

European Headquarters
Munich, Germany
49-89-413092-0
eurinfo@molex.com

Corporate Headquarters
2222 Wellington Ct.
Lisle, Illinois 60532 USA
630-969-4550

Visit our Web site at <http://www.molex.com>