



LM78MXX Series 3-Terminal Positive Voltage Regulators

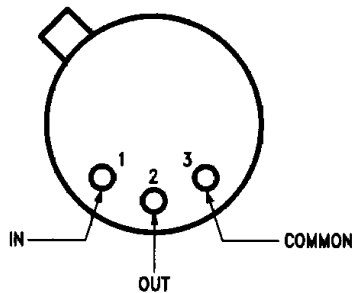
General Description

The LM78M00 series of 3-terminal medium current positive voltage regulators employ internal current-limiting, thermal shutdown and safe-area compensation making them essentially indestructible. If adequate heat sinking is provided, they can deliver in excess of 0.5A output current. They are intended as fixed voltage regulators in a wide range of applications including local (on-card) regulation for elimination of noise and distribution problems associated with single-point regulation. In addition to use as fixed voltage regulators, these devices can be used with external components to obtain adjustable output voltages and currents.

Features

- Output current in excess of 0.5A
- No external components
- Internal thermal overload protection
- Internal short circuit current-limiting
- Output transistor safe-area compensation
- Available in JEDEC TO-220 and TO-39 packages
- Output voltages of 5V, 6V, 8V, 12V, 15V, and 24V

Connection Diagrams

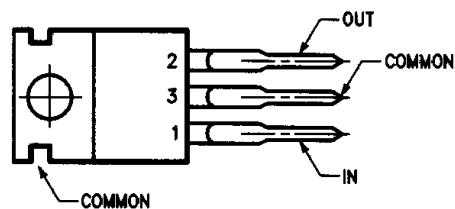


Lead 3 connected to case.

Top View

TL/H/10053-1

**Order Number LM78M05CH, LM78M06CH, LM78M08CH,
LM78M12CH, LM78M15CH or LM78M24CH**
See NS Package Number H03B



Top View

TL/H/10053-2

Lead 3 connected to tab.

**Order Number LM78M05CT, LM78M06CT, LM78M08CT,
LM78M12CT, LM78M15CT or LM78M24CT**
See NS Package Number T03B

Absolute Maximum Ratings

If Military/Aerospace specified devices are required, please contact the National Semiconductor Sales Office/Distributors for availability and specifications.

Storage Temperature Range	
TO-39 Metal Can	-65°C to +175°C
TO-220 Package	-65°C to +150°C
Operating Junction Temperature Range	
	0°C to +150°C

Lead Temperature	
TO-39 Metal Can (Soldering, 60 sec.)	300°C
TO-220 Package (Soldering, 60 sec.)	265°C
Power Dissipation	
	Internally Limited
Input Voltage	
5.0V to 15V	35V
24V	40V
ESD Susceptibility	
	(to be determined)

LM78M05C

Electrical Characteristics

0°C ≤ T_A ≤ 125°C, V_I = 10V, I_O = 350 mA, C_I = 0.33 μF, C_O = 0.1 μF, unless otherwise specified

Symbol	Parameter	Conditions (Note 1)	Min	Typ	Max	Units
V _O	Output Voltage	T _J = 25°C	4.8	5.0	5.2	V
V _{R LINE}	Line Regulation	T _J = 25°C		3.0	100	mV
		7.0V ≤ V _I ≤ 25V, I _O = 200 mA				
				1.0	50	
V _{R LOAD}	Load Regulation	T _J = 25°C		20	100	mV
		5.0 mA ≤ I _O ≤ 500 mA				
		5.0 mA ≤ I _O ≤ 200 mA		10	50	
V _O	Output Voltage	7.0V ≤ V _I ≤ 20V, 5.0 mA ≤ I _O ≤ 350 mA	4.75		5.25	V
I _Q	Quiescent Current	T _J = 25°C		4.5	8.0	mA
ΔI _Q	Quiescent Current Change	with Line			0.8	mA
		with Load			0.5	
N _O	Noise	T _A = 25°C, 10 Hz ≤ f ≤ 100 kHz		40		μV
ΔV _I /ΔV _O	Ripple Rejection	f = 2400 Hz, I _O = 125 mA, T _J = 25°C	62	80		dB
V _{DO}	Dropout Voltage	T _A = 25°C		2.0		V
I _{OS}	Output Short Circuit Current	T _J = 25°C, V _I = 35V		300		mA
I _{pk}	Peak Output Current	T _J = 25°C		700		mA
ΔV _O /ΔT	Average Temperature Coefficient of Output Voltage	I _O = 5.0 mA		1.0		mV/°C

LM78M06C

Electrical Characteristics

0°C ≤ T_A ≤ 125°C, V_I = 11V, I_O = 350 mA, C_I = 0.33 μF, C_O = 0.1 μF, unless otherwise specified

Symbol	Parameter	Conditions (Note 1)	Min	Typ	Max	Units
V _O	Output Voltage	T _J = 25°C	5.75	6.0	6.25	V
V _{R LINE}	Line Regulation	T _J = 25°C		5.0	100	mV
		8.0V ≤ V _I ≤ 25V, I _O = 200 mA				
				1.5	50	
V _{R LOAD}	Load Regulation	T _J = 25°C		20	120	mV
		5.0 mA ≤ I _O ≤ 500 mA				
		5.0 mA ≤ I _O ≤ 200 mA		10	60	
V _O	Output Voltage	8.0V ≤ V _I ≤ 21V, 5.0 mA ≤ I _O ≤ 350 mA	5.7		6.3	V
I _Q	Quiescent Current	T _J = 25°C		4.5	8.0	mA
ΔI _Q	Quiescent Current Change	with Line			0.8	mA
		with Load			0.5	

LM78M06C**Electrical Characteristics** (Continued)
 $0^{\circ}\text{C} \leq T_A \leq 125^{\circ}\text{C}$, $V_I = 11\text{V}$, $I_O = 350\text{ mA}$, $C_I = 0.33\ \mu\text{F}$, $C_O = 0.1\ \mu\text{F}$, unless otherwise specified.

Symbol	Parameter	Conditions (Note 1)	Min	Typ	Max	Units
N_O	Noise	$T_A = 25^{\circ}\text{C}$, $10\text{ Hz} \leq f \leq 100\text{ kHz}$		45		μV
$\Delta V_I/\Delta V_O$	Ripple Rejection	$f = 2400\text{ Hz}$, $I_O = 125\text{ mA}$, $T_J = 25^{\circ}\text{C}$	59	80		dB
V_{DO}	Dropout Voltage	$T_A = 25^{\circ}\text{C}$		2.0		V
I_{OS}	Output Short Circuit Current	$T_J = 25^{\circ}\text{C}$, $V_I = 35\text{V}$		270		mA
I_{pk}	Peak Output Current	$T_J = 25^{\circ}\text{C}$		700		mA
$\Delta V_O/\Delta T$	Average Temperature Coefficient of Output Voltage	$I_O = 5.0\text{ mA}$		0.5		$\text{mV}/^{\circ}\text{C}$

LM78M08C**Electrical Characteristics**
 $0^{\circ}\text{C} \leq T_A \leq 125^{\circ}\text{C}$, $V_I = 14\text{V}$, $I_O = 350\text{ mA}$, $C_I = 0.33\ \mu\text{F}$, $C_O = 0.1\ \mu\text{F}$, unless otherwise specified

Symbol	Parameter	Conditions (Note 1)	Min	Typ	Max	Units
V_O	Output Voltage	$T_J = 25^{\circ}\text{C}$	7.7	8.0	8.3	V
$V_{R\text{ LINE}}$	Line Regulation	$T_J = 25^{\circ}\text{C}$		6.0	100	mV
		$10.5\text{V} \leq V_I \leq 25\text{V}$, $I_O = 200\text{ mA}$		2.0	50	
$V_{R\text{ LOAD}}$	Load Regulation	$T_J = 25^{\circ}\text{C}$		25	160	mV
		$5.0\text{ mA} \leq I_O \leq 500\text{ mA}$		10	80	
V_O	Output Voltage	$10.5\text{V} \leq V_I \leq 23\text{V}$, $5.0\text{ mA} \leq I_O \leq 350\text{ mA}$	7.6		8.4	V
I_Q	Quiescent Current	$T_J = 25^{\circ}\text{C}$		4.6	8.0	mA
ΔI_Q	Quiescent Current Change	with Line $10.5\text{V} \leq V_I \leq 25\text{V}$, $I_O = 200\text{ mA}$			0.8	mA
		with Load $5.0\text{ mA} \leq I_O \leq 350\text{ mA}$			0.5	
N_O	Noise	$T_A = 25^{\circ}\text{C}$, $10\text{ Hz} \leq f \leq 100\text{ kHz}$		52		μV
$\Delta V_I/\Delta V_O$	Ripple Rejection	$f = 2400\text{ Hz}$, $I_O = 125\text{ mA}$, $T_J = 25^{\circ}\text{C}$	56	80		dB
V_{DO}	Dropout Voltage	$T_A = 25^{\circ}\text{C}$		2.0		V
I_{OS}	Output Short Circuit Current	$T_J = 25^{\circ}\text{C}$, $V_I = 35\text{V}$		250		mA
I_{pk}	Peak Output Current	$T_J = 25^{\circ}\text{C}$		700		mA
$\Delta V_O/\Delta T$	Average Temperature Coefficient of Output Voltage	$I_O = 5.0\text{ mA}$		0.5		$\text{mV}/^{\circ}\text{C}$

LM78M12C**Electrical Characteristics**
 $0^{\circ}\text{C} \leq T_A \leq 125^{\circ}\text{C}$, $V_I = 19\text{V}$, $I_O = 350\text{ mA}$, $C_I = 0.33\ \mu\text{F}$, $C_O = 0.1\ \mu\text{F}$, unless otherwise specified

Symbol	Parameter	Conditions (Note 1)	Min	Typ	Max	Units
V_O	Output Voltage	$T_J = 25^{\circ}\text{C}$	11.5	12.0	12.5	V
$V_{R\text{ LINE}}$	Line Regulation	$T_J = 25^{\circ}\text{C}$		8.0	100	mV
		$14.5\text{V} \leq V_I \leq 30\text{V}$, $I_O = 200\text{ mA}$		2.0	50	
		$16\text{V} \leq V_I \leq 25\text{V}$, $I_O = 200\text{ mA}$				

LM78M12C**Electrical Characteristics** (Continued)
 $0^{\circ}\text{C} \leq T_A \leq 125^{\circ}\text{C}$, $V_I = 19\text{V}$, $I_O = 350\text{ mA}$, $C_I = 0.33\ \mu\text{F}$, $C_O = 0.1\ \mu\text{F}$, unless otherwise specified

Symbol	Parameter	Conditions (Note 1)	Min	Typ	Max	Units	
$V_{R\text{ LOAD}}$	Load Regulation	$T_J = 25^{\circ}\text{C}$	$5.0\text{ mA} \leq I_O \leq 500\text{ mA}$		25	240	mV
			$5.0\text{ mA} \leq I_O \leq 200\text{ mA}$		10	120	
V_O	Output Voltage	$14.5\text{V} \leq V_I \leq 27\text{V}$, $5.0\text{ mA} \leq I_O \leq 350\text{ mA}$	11.4		12.6	V	
I_Q	Quiescent Current	$T_J = 25^{\circ}\text{C}$		4.8	8.0	mA	
ΔI_Q	Quiescent Current Change	with Line	$14.5\text{V} \leq V_I \leq 30\text{V}$, $I_O = 200\text{ mA}$		0.8	mA	
		with Load	$5.0\text{ mA} \leq I_O \leq 350\text{ mA}$		0.5		
N_O	Noise	$T_A = 25^{\circ}\text{C}$, $10\text{ Hz} \leq f \leq 100\text{ kHz}$		75		μV	
$\Delta V_I / \Delta V_O$	Ripple Rejection	$f = 2400\text{ Hz}$, $I_O = 125\text{ mA}$, $V_I = 17\text{V}$, $T_J = 25^{\circ}\text{C}$	55	80		dB	
V_{DO}	Dropout Voltage	$T_A = 25^{\circ}\text{C}$		2.0		V	
I_{OS}	Output Short Circuit Current	$T_J = 25^{\circ}\text{C}$, $V_I = 35\text{V}$		240		mA	
I_{pk}	Peak Output Current	$T_J = 25^{\circ}\text{C}$		700		mA	
$\Delta V_O / \Delta T$	Average Temperature Coefficient of Output Voltage	$I_O = 5.0\text{ mA}$		1.0		$\text{mV}/^{\circ}\text{C}$	

LM78M15C**Electrical Characteristics**
 $0^{\circ}\text{C} \leq T_A \leq 125^{\circ}\text{C}$, $V_I = 23\text{V}$, $I_O = 350\text{ mA}$, $C_I = 0.33\ \mu\text{F}$, $C_O = 0.1\ \mu\text{F}$, unless otherwise specified (Continued)

Symbol	Parameter	Conditions (Note 1)	Min	Typ	Max	Units	
V_O	Output Voltage	$T_J = 25^{\circ}\text{C}$	14.4	15.0	15.6	V	
$V_{R\text{ LINE}}$	Line Regulation	$T_J = 25^{\circ}\text{C}$	$17.5\text{V} \leq V_I \leq 30\text{V}$, $I_O = 200\text{ mA}$		10	100	mV
			$20\text{V} \leq V_I \leq 28\text{V}$, $I_O = 200\text{ mA}$		3.0	50	
$V_{R\text{ LOAD}}$	Load Regulation	$T_J = 25^{\circ}\text{C}$	$5.0\text{ mA} \leq I_O \leq 500\text{ mA}$		25	300	mV
			$5.0\text{ mA} \leq I_O \leq 200\text{ mA}$		10	150	
V_O	Output Voltage	$17.5\text{V} \leq V_I \leq 30\text{V}$, $5.0\text{ mA} \leq I_O \leq 350\text{ mA}$	14.25		15.75	V	
I_Q	Quiescent Current	$T_J = 25^{\circ}\text{C}$		4.8	8.0	mA	
ΔI_Q	Quiescent Current Change	with Line	$17.5\text{V} \leq V_I \leq 30\text{V}$, $I_O = 200\text{ mA}$		0.8	mA	
		with Load	$5.0\text{ mA} \leq I_O \leq 350\text{ mA}$		0.5		
N_O	Noise	$T_A = 25^{\circ}\text{C}$, $10\text{ Hz} \leq f \leq 100\text{ kHz}$		90		μV	
$\Delta V_I / \Delta V_O$	Ripple Rejection	$f = 2400\text{ Hz}$, $I_O = 125\text{ mA}$, $V_I = 20\text{V}$, $T_J = 25^{\circ}\text{C}$	54	70		dB	
V_{DO}	Dropout Voltage	$T_A = 25^{\circ}\text{C}$		2.0		V	
I_{OS}	Output Short Circuit Current	$T_J = 25^{\circ}\text{C}$, $V_I = 35\text{V}$		240		mA	
I_{pk}	Peak Output Current	$T_J = 25^{\circ}\text{C}$		700		mA	
$\Delta V_O / \Delta T$	Average Temperature Coefficient of Output Voltage	$I_O = 5.0\text{ mA}$		1.0		$\text{mV}/^{\circ}\text{C}$	

LM78M24C

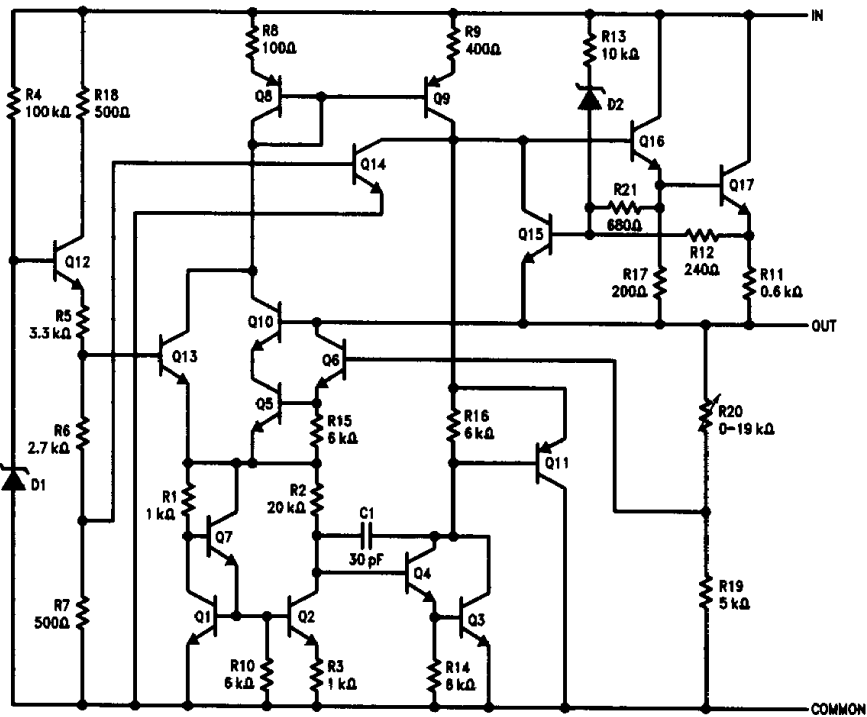
Electrical Characteristics

0°C ≤ T_A ≤ 125°C, V_I = 33V, I_O = 350 mA, C_I = 0.33 μF, C_O = 0.1 μF, unless otherwise specified

Symbol	Parameter	Conditions (Note 1)	Min	Typ	Max	Units
V _O	Output Voltage	T _J = 25°C	23.0	24.0	25.0	V
V _{R LINE}	Line Regulation	T _J = 25°C 27V ≤ V _I ≤ 38V, I _O = 200 mA		10	100	mV
		28V ≤ V _I ≤ 36V, I _O = 200 mA		5.0	50	
V _{R LOAD}	Load Regulation	T _J = 25°C 5.0 mA ≤ I _O ≤ 500 mA		30	480	mV
		5.0 mA ≤ I _O ≤ 200 mA		10	240	
V _O	Output Voltage	27V ≤ V _I ≤ 38V, 5.0 mA ≤ I _O ≤ 350 mA	22.8		25.2	V
I _Q	Quiescent Current	T _J = 25°C		5.0	8.0	mA
ΔI _Q	Quiescent Current Change	with Line			0.8	mA
		with Load			0.5	
N _O	Noise	T _A = 25°C, 10 Hz ≤ f ≤ 100 kHz		170		μV
ΔV _I /ΔV _O	Ripple Rejection	f = 2400 Hz, I _O = 125 mA, V _I = 30V, T _J = 25°C	50	70		dB
V _{DO}	Dropout Voltage	T _A = 25°C		2.0		V
I _{OS}	Output Short Circuit Current	T _J = 35°C, V _I = 35V		240		mA
I _{pk}	Peak Output Current	T _J = 25°C		700		mA
ΔV _O /ΔT	Average Temperature Coefficient of Output Voltage	I _O = 5.0 mA		1.2		mV/°C

Note 1: All characteristics except noise voltage and ripple rejection ratio are measured using pulse techniques (T_w ≤ 10 ms, duty cycle ≤ 5%). Output voltage changes due to changes in internal temperature must be taken into account separately.

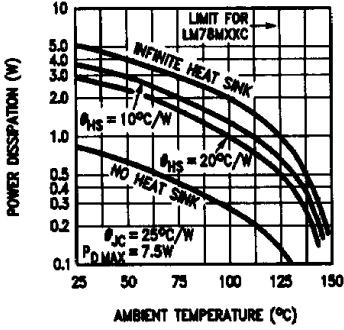
Equivalent Circuit



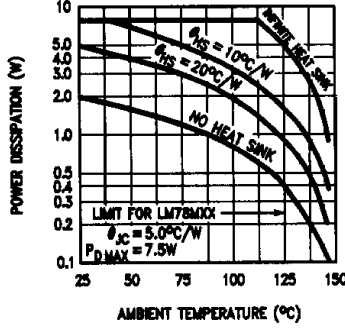
TL/H/10053-3

Typical Performance Characteristics

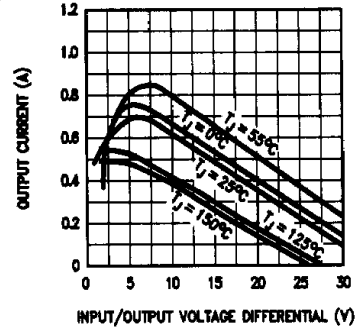
Worst Case Power Dissipation vs Ambient Temperature (TO-39)



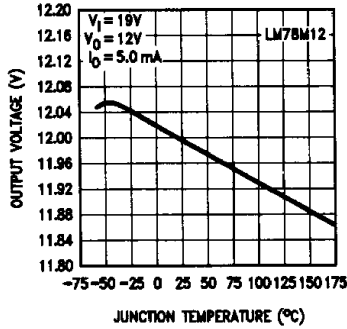
Worst Case Power Dissipation vs Ambient Temperature (TO-220)



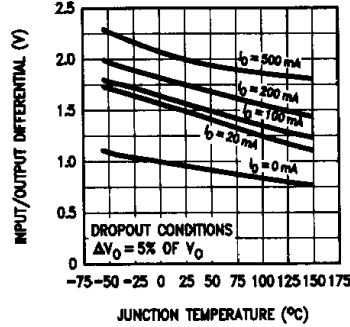
Peak Output Current vs Input/Output Voltage Differential



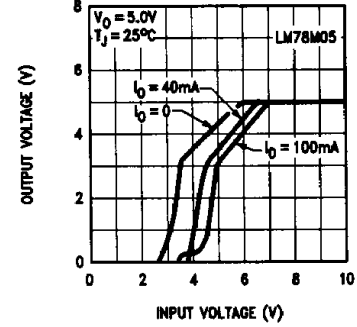
Output Voltage vs Junction Temperature



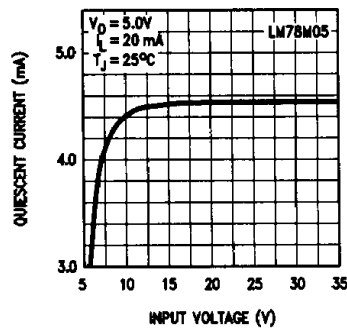
Dropout Voltage vs Junction Temperature



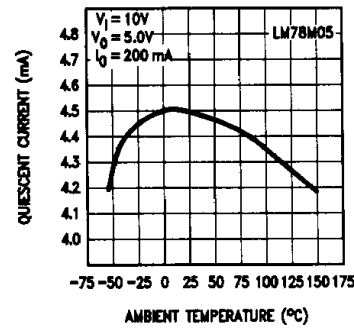
Dropout Characteristics



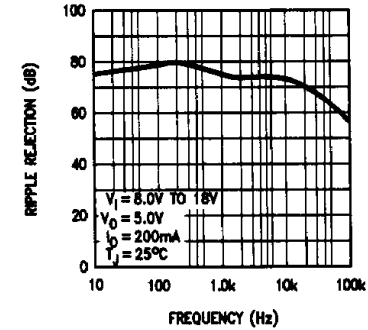
Quiescent Current vs Input Voltage



Quiescent Current vs Temperature



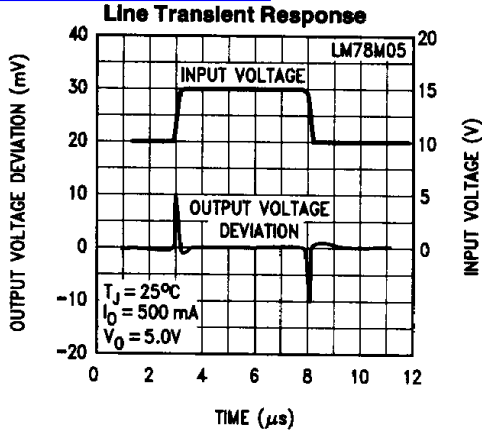
Ripple Rejection vs Frequency



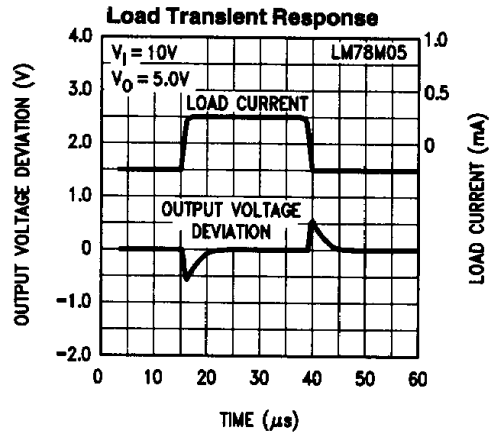
TL/H/10053-4

Note: Other LM78M00 Series devices have similar curves.

Typical Performance Characteristics (Continued)



TL/H/10053-5



TL/H/10053-6

Design Considerations

The LM78MXX fixed voltage regulator series has thermal-overload protection from excessive power, internal short circuit protection which limits the circuit's maximum current, and output transistor safe-area compensation for reducing the output short circuit current as the voltage across the pass transistor is increased.

Although the internal power dissipation is limited, the junction temperature must be kept below the maximum specified temperature (+125°C for LM78MXXC) in order to meet data sheet specifications. To calculate the maximum junction temperature or heat sink required, the following thermal resistance values should be used:

Package	Typ θ_{JC}	Max θ_{JC}	Typ θ_{JA}	Max θ_{JA}
TO-39	18	25	120	140
TO-220	3.0	5.0	60	40

$$P_{D \text{ Max}} = \frac{T_{J \text{ Max}} - T_A}{\theta_{JC} + \theta_{CA}} \text{ or}$$

$$= \frac{T_{J \text{ Max}} - T_A}{\theta_{JA}} \text{ (Without a Heat Sink)}$$

$$\theta_{CA} = \theta_{CS} + \theta_{SA}$$

Solving for T_J :

$$T_J = T_A + P_D (\theta_{JC} + \theta_{CA}) \text{ or}$$

$$= T_A + P_D \theta_{JA} \text{ (Without a Heat Sink)}$$

Where:

T_J = Junction Temperature

T_A = Ambient Temperature

P_D = Power Dissipation

θ_{JC} = Junction to Case Thermal Resistance

θ_{CA} = Case-to-Ambient Thermal Resistance

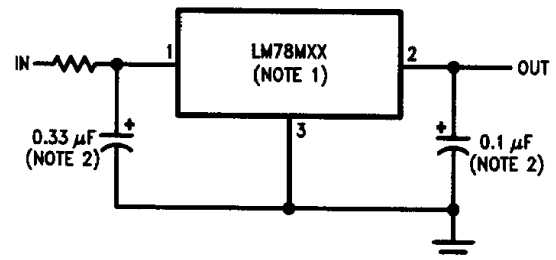
θ_{CS} = Case-to-Heat Sink Thermal Resistance

θ_{SA} = Heat Sink-to-Ambient Thermal Resistance

θ_{JA} = Junction-to-Ambient Thermal Resistance

Typical Applications

Fixed Output Regulator



TL/H/10053-7

Note 1: To specify an output voltage, substitute voltage value for "XX".

Note 2: Bypass capacitors are recommended for optimum stability and transient response and should be located as close as possible to the regulator.