

INTRODUCTION

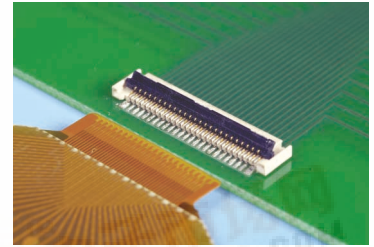
[查询"49022-5067"供应商](#)

This new 0.30mm pitch FPC connector from Molex offers compact, high-density features and secure cable retention. Corner ledges on the connector ensure that the actuator will not become disengaged if the cable is pulled upward.

Available in 51 circuits, it is ideal for mobile LED applications and other high density packaging. This miniature version also features Molex's unique Easy-On™ actuator that rotates back 135% degrees to provide easy cable insertion. A staggered footprint pattern provides a high density 0.30mm pitch PCB layout that is compatible with some competitive versions.



**0.30mm (.012") Pitch
FPC Connector
1.20mm (.047") Height
49063**

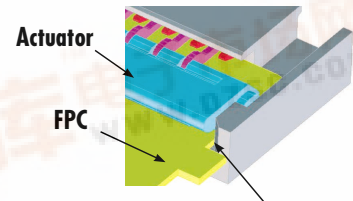
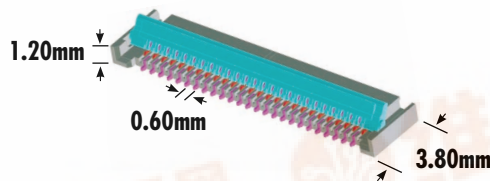


Specifications:

- Voltage: 50V
- Current: 0.35A
- Withstanding Voltage: AC 250V
- Contact Resistance: 60m Ω max.
- Insulation Resistance: 50M Ω min.
- Durability: 10 cycles
- Housing: LCP (Glass-filled), UL 94V-0
- Actuator: PPS
- Contact: Copper Alloy
- Plating: Terminal - Gold over Nickel
- Operating Temperature: -40°C ~ +85°C

FEATURES AND BENEFITS

- Compact design for space savings
- Corner ledges prevent actuator from lifting up even if cable is pulled upwards
- Easy-On™ actuator rotates 135% for easy cable insertion
- Actuator and contact design provide secure cable retention
- Staggered pitch PCB pattern enables high-density packaging
- Accepts 0.12mm thick FPC



Corner ledges protect actuator from disengaging if cable is pulled upwards

SELECTION MATRIX

	Description	Order No.	Circuits			Packaging
	Right Angle, SMT Easy-On™ Bottom Contact Height = 1.20mm (.047") FPC Thickness = 0.12mm	49063-5167	51	Gold	LCP (Glass-filled), UL 94V-0, Copper Alloy	Embossed Tape

APPLICATIONS

- Mobile Phone
- LED display module
- DSC
- DVC
- PDA
- PHS
- Voice Recorder
- GPS
- Portable game machine
- Any low-profile device



INTRODUCTION

查询"49022-5067"供应商

This new connector has two versions: one with molded ramp guides to accommodate notches on the FPC cable and provide additional mating guidance and retention; and a standard version without the mold guides that accepts various FPC cable.

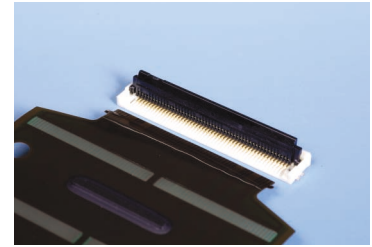
The main application for this new high density FPC connector is PDP flat panel displays and Low Voltage Differential Signaling (LVDS) TV applications. However, its robust features make it ideal for many high-density FPC applications

Specifications:

- Voltage: 50V
- Current: 0.5A
- Contact Resistance: 40m Ω max.
- Dielectric Withstanding Voltage: AC 250V
- Insulation Resistance: 50m Ω min.
- Durability: 10 cycles
- Housing: Polyamide (Glass-filled), UL 94V-0
- Actuator: PPS
- Contact: Phosphor Bronze
- Plating: Terminal - Gold; Solder Tab - Tin
- Operating Temperature: -40°C ~ +85°C

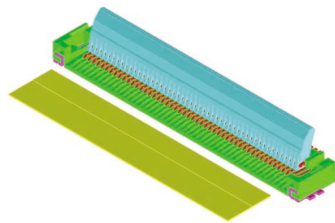


**0.50mm (.020") Pitch
FPC Connector
2.00mm (.079") Height
49022/49326**

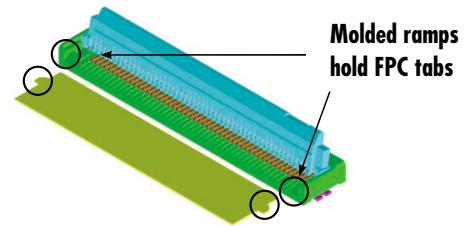


FEATURES AND BENEFITS

- 49326 has corner mold guides ramps to accept cable tabs and provide additional mating guidance and retention
- Robust design provides protection to housing and actuator
- Footprint compatible with some competitive versions
- Easy-On™ actuator rotates back 100% to provide easy cable insertion and secure cable retention on both 49022 and 49326





**49022 series without
FPC tab guides**



**49326 series with
FPC tab guides**

SELECTION MATRIX

	Description	With Ramp	Order No.	Circuits	Plating	Material (Housing/Terminal)	Packaging
	Right Angle, SMT Easy-On™ Bottom Contact Height = 2.00mm (.079") FPC Thickness = 0.12mm	No	49022-5067	50	Gold	Polyamide (Glass-filled), UL 94V-0, Phosphor Bronze	Embossed Tape
		Yes	49326-5017				

APPLICATIONS



- Plasma Display Panels (PDP)
- Liquid Crystal Display (LCD) Panels
- HDTV
- TV Tuners
- Power Units
- LCD / PDP Panel Switches
- PDP Scan Boards
- Office Automation
- Servers, Routers
- DVD
- Plain Paper Copier

Americas Headquarters
2222 Wellington Ct,
Lisle, Illinois 60532 U.S.A
Tel: 1-800-78MOLEX
amerinfo@molex.com

Far East North Headquarters
Yamato, Kanagawa, Japan
Tel: 81-462-65-2324
feninfo@molex.com

Far East South Headquarters
Jurong, Singapore
Tel: 65-6-268-6868
fesinfo@molex.com

European Headquarters
Munich, Germany
Tel: 49-89-413092-0
eurinfo@molex.com

Corporate Headquarters
2222 Wellington Ct,
Lisle, Illinois 60532 U.S.A
Tel: 630-969-4550