

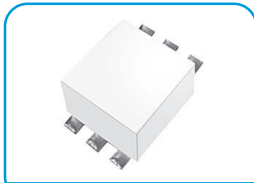
# QUADRATURE HYBRID MODEL SLQ-KH1

OCTAVE BANDWIDTH

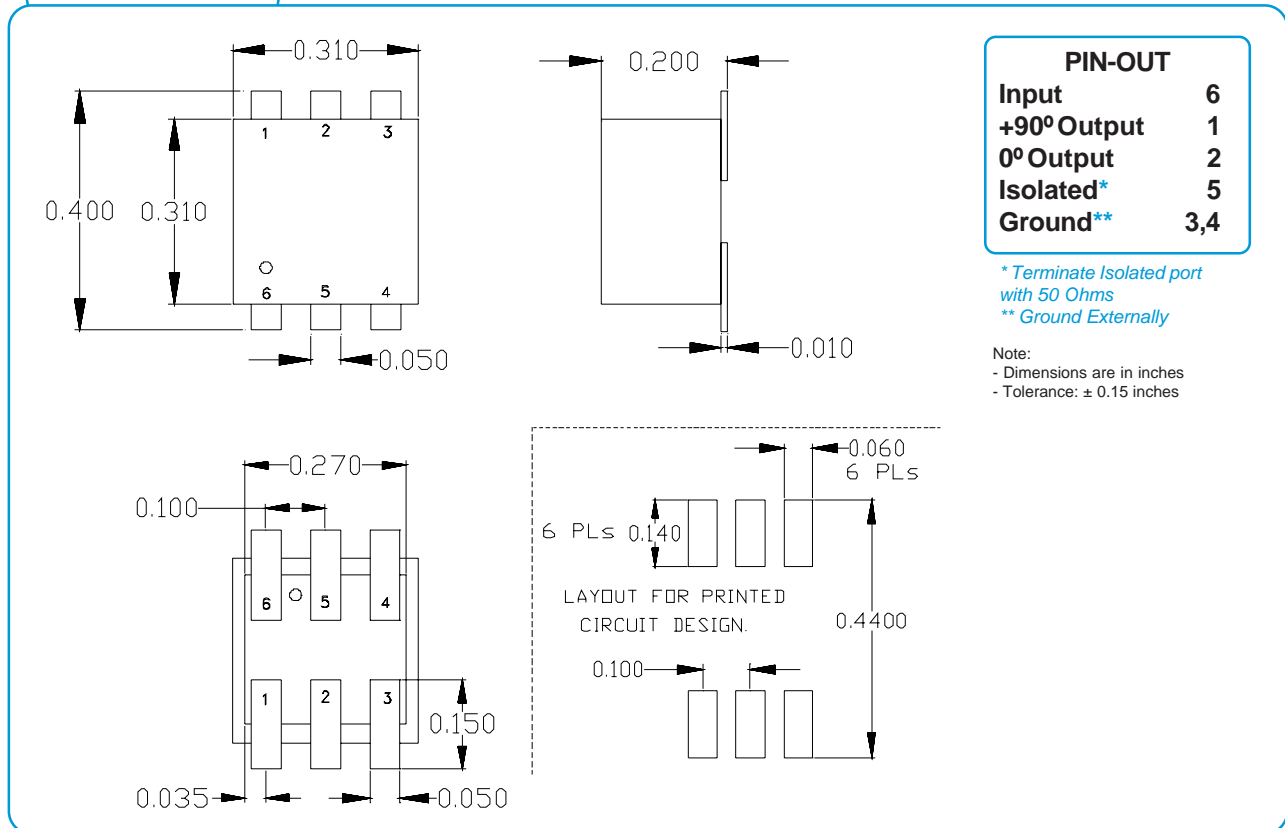
30 - 60 MHz

## SPECIFICATIONS

<b>Operating Frequency:</b>	30 - 60 MHz	<b>Phase Unbalance:</b>	1.0° (Typ) / 3.0° (Max)
<b>Insertion Loss:</b>	0.3 dB (Typ) / 0.6 dB (Max)	<b>VSWR :</b>	1.1:1 (Max)
<b>Isolation:</b>	25 dB (Typ) / 20 dB (Min)	<b>Power Rating:</b>	1 Watt (Max)
<b>Amplitude Unbalance:</b>	0.4 dB (Typ) / 0.75 dB (Max)	<b>Impedance:</b>	50 Ohms (Nom)
		<b>Operating Temp. Range:</b>	-20° to +70°C



MECHANICAL OUTLINE: 159



# QUADRATURE HYBRID MODEL SLQ-KH1

OCTAVE BANDWIDTH

30 - 60 MHz

## PERFORMANCE PLOTS

