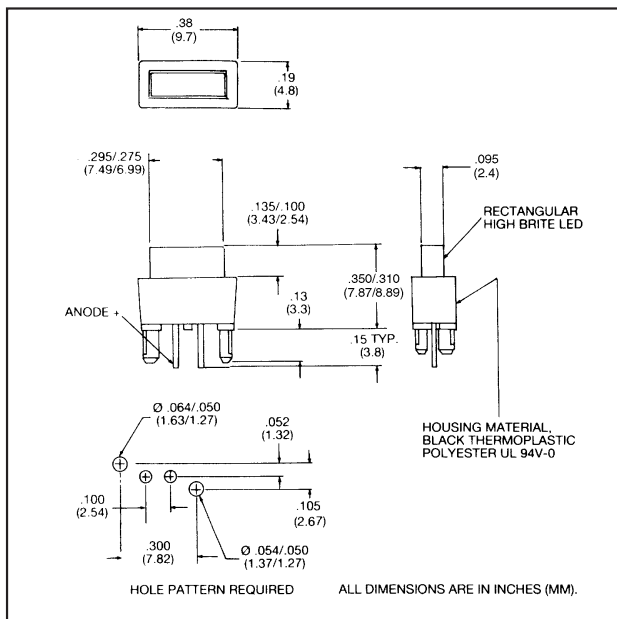


5612 Series Rectangular LED Assembly

DESCRIPTION AND FEATURES



FEATURES

- Block mounting design assures height and side-by-side spacing-alignment saves assembly costs
- High light output-5 mcd (red)
- Large 2.4 mm x 7.3 flat LED face has even light distribution
- Diffusion lens
- Holding/Press-in pins secures block to board while being soldered
- Standoffs prevent flux entrapment

Housing: Black Thermoplastic Polyester (UL 94V-0)

ELECTRO-OPTICAL CHARACTERISTICS AND RATINGS

Part Number	Color	Typical Intensity (mcd)	Rated Current (mA)	Continuous Forward Current Max. (mA)	Forward Voltage Typ. (V)	Forward Voltage Max. (V)	Peak Forward Current At 1ms-300 PPS (A)	Reverse Breakdown Voltage Min. (V)	Peak Wavelength (nm)	For More Complete LED Data (Page)
5612R1	Red	5	20	30	2.1	3.0	.09	5	635	1-101
5612R3	Amber	5	20	30	2.2	3.0	.09	5	600	1-101
5612R5	Green	3	20	30	2.3	3.0	.09	5	569	1-101
5612R7	Yellow	5	20	30	2.2	3.0	.06	5	585	1-101