

[查询"B7662"供应商](#)



SAW Components

Data Sheet B7662



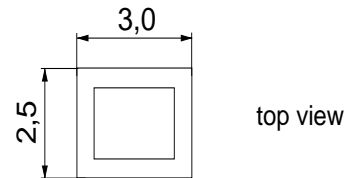
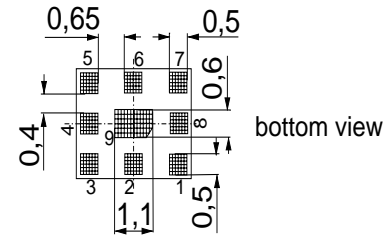


SAW Components	B7662
Low-Loss Filter for Mobile Communication	1765,0 / 1855,0 MHz
Data Sheet	SMD

Chip Sized SAW Package QCS9K

Features

- Low-loss duplexer for Korean PCS mobile telephone systems
- Very small size and low height
- Package for **Surface Mounted Technology (SMT)**



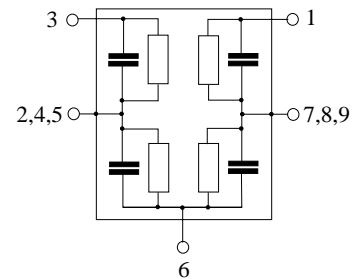
Dimensions in mm, approx. weight 0,028 g

Terminals

Ni, gold-plated

Pin configuration

- 1 TX Input
- 3 RX Output
- 6 Antenna
- 2, 4, 5 Ground
- 7, 8, 9 Ground



Type	Ordering code	Marking and Package according to	Packing according to
B7662	B39192-B7662-P610	C61157-A3-A15	F61074-V8156-Z000

Electrostatic Sensitive Device (ESD)

Maximum ratings

Operating temperature range	T	- 30/+ 85	°C	machine model, 10 pulses source and load impedance 50 Ω } continuous wave
Storage temperature range	T_{stg}	- 40/+ 85	°C	
DC voltage	V_{DC}	5	V	
ESD voltage	V_{ESD}	50 ¹⁾	V	
Input power max.	P_{IN}	29	dBm	
1750,0 ... 1780,0 MHz elsewhere		10	dBm	

1) -acc. to JESD22-115A (Machine Model), 10 negative & 10 positive pulses



SAW Components	B7662
Low-Loss Filter for Mobile Communication	1765,0 / 1855,0 MHz

Data Sheet



Characteristics

Operating temperature range $T = 25 \pm 2^\circ\text{C}$
 ANT terminating impedance $Z_{\text{ANT}} = 50 \Omega$
 RX terminating impedance $Z_{\text{RX}} = 50 \Omega$
 TX terminating impedance $Z_{\text{TX}} = 50 \Omega$

Characteristics TX - ANT		min.	typ.	max.	
Center frequency	f_c	—	1765,0	—	MHz
Maximum insertion attenuation	α_{max}	—	1,6	1,8	dB
	1750,00 ... 1780,00 MHz				
Amplitude ripple (p-p)	$\Delta\alpha$	—	0,4	0,7	dB
	1750,00 ... 1780,00 MHz				
Return loss		9,0	11	—	dB
	1750,00 ... 1780,00 MHz				
Attenuation	α	40	49	—	dB
	1840,00 ... 1870,00 MHz				
	2000,00 ... 3000,00 MHz	25	30	—	dB

Characteristics ANT - RX		min.	typ.	max.	
Center frequency	f_c	—	1855,0	—	MHz
Maximum insertion attenuation	α_{max}	—	1,9	2,3	dB
	1840,00 ... 1870,00 MHz				
Amplitude ripple (p-p)	$\Delta\alpha$	—	0,2	0,7	dB
	1840,00 ... 1870,00 MHz				
Return loss		9,0	12	—	dB
	1840,00 ... 1870,00 MHz				
Attenuation	α	52	62	—	dB
	1750,00 ... 1780,00 MHz				
	2000,00 ... 3000,00 MHz	35	55	—	dB

Characteristics TX - RX		min.	typ.	max.	
Isolation between TX and RX path	α	60	64	—	dB
	1750,00 ... 1780,00 MHz				
	1840,00 ... 1870,00 MHz	45	50	—	dB



SAW Components	B7662
Low-Loss Filter for Mobile Communication	1765,0 / 1855,0 MHz

Data Sheet



Characteristics

Operating temperature range $T = -30$ to 85 °C
 ANT terminating impedance $Z_{ANT} = 50$ Ω
 RX terminating impedance $Z_{RX} = 50$ Ω
 TX terminating impedance $Z_{TX} = 50$ Ω

Characteristics TX - ANT		min.	typ.	max.	
Center frequency	f_c	—	1765,0	—	MHz
Maximum insertion attenuation	α_{max}				
	1750,00 ... 1780,00 MHz	—	1,6	2,0	dB
Amplitude ripple (p-p)	$\Delta\alpha$				
	1750,00 ... 1780,00 MHz	—	0,4	0,9	dB
Return loss					
	1750,00 ... 1780,00 MHz	9,0	11	—	dB
Attenuation	α				
	1840,00 ... 1870,00 MHz	40	47	—	dB
	2000,00 ... 3000,00 MHz	25	30	—	dB

Characteristics ANT - RX		min.	typ.	max.	
Center frequency	f_c	—	1855,0	—	MHz
Maximum insertion attenuation	α_{max}				
	1840,00 ... 1870,00 MHz	—	2,1	2,5	dB
Amplitude ripple (p-p)	$\Delta\alpha$				
	1840,00 ... 1870,00 MHz	—	0,5	0,9	dB
Return loss					
	1840,00 ... 1870,00 MHz	9,0	12	—	dB
Attenuation	α				
	1750,00 ... 1780,00 MHz	52	60	—	dB
	2000,00 ... 3000,00 MHz	35	55	—	dB

Characteristics TX - RX		min.	typ.	max.	
Isolation between TX and RX path	α				
	1750,00 ... 1780,00 MHz	58	63	—	dB
	1840,00 ... 1870,00 MHz	43	48	—	dB



SAW Components

B7662

Low-Loss Filter for Mobile Communication

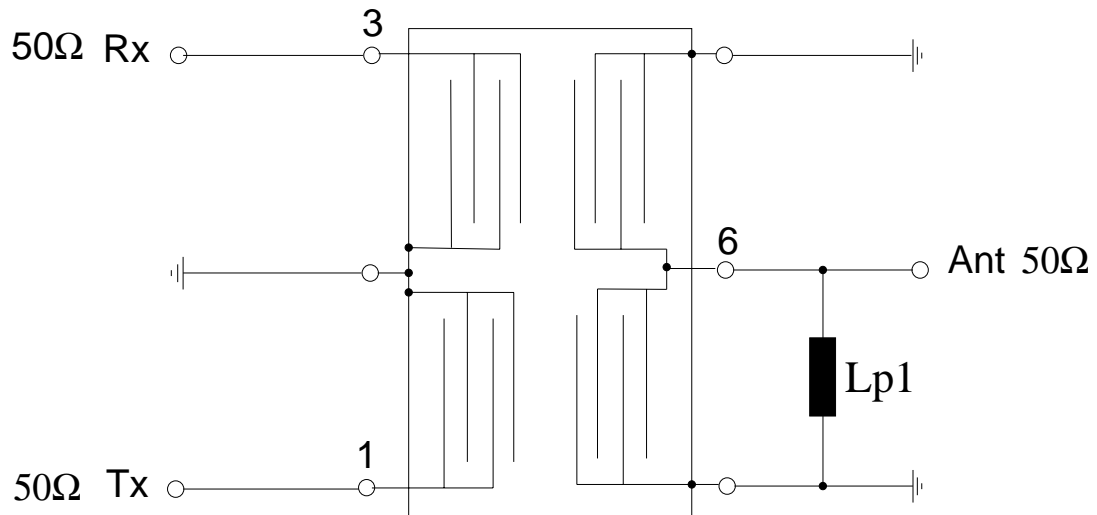
1765,0 / 1855,0 MHz

Data Sheet



Matching circuit to terminating impedances

(Element values depend upon PCB layout)



$L_{p1} = 3.3 \text{ nH}$



SAW Components

B7662

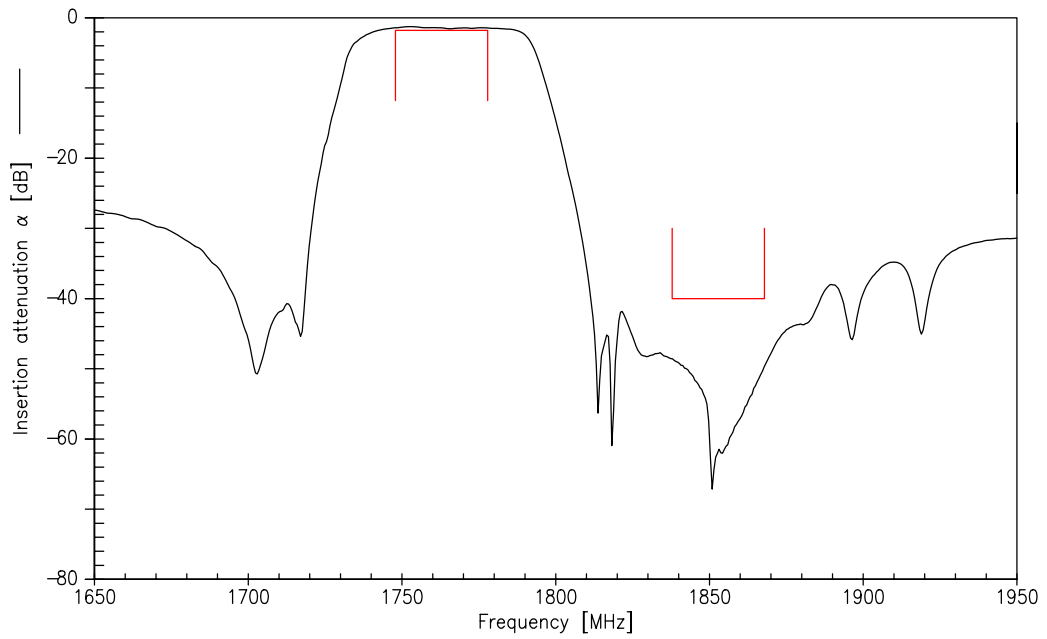
Low-Loss Filter for Mobile Communication

1765,0 / 1855,0 MHz

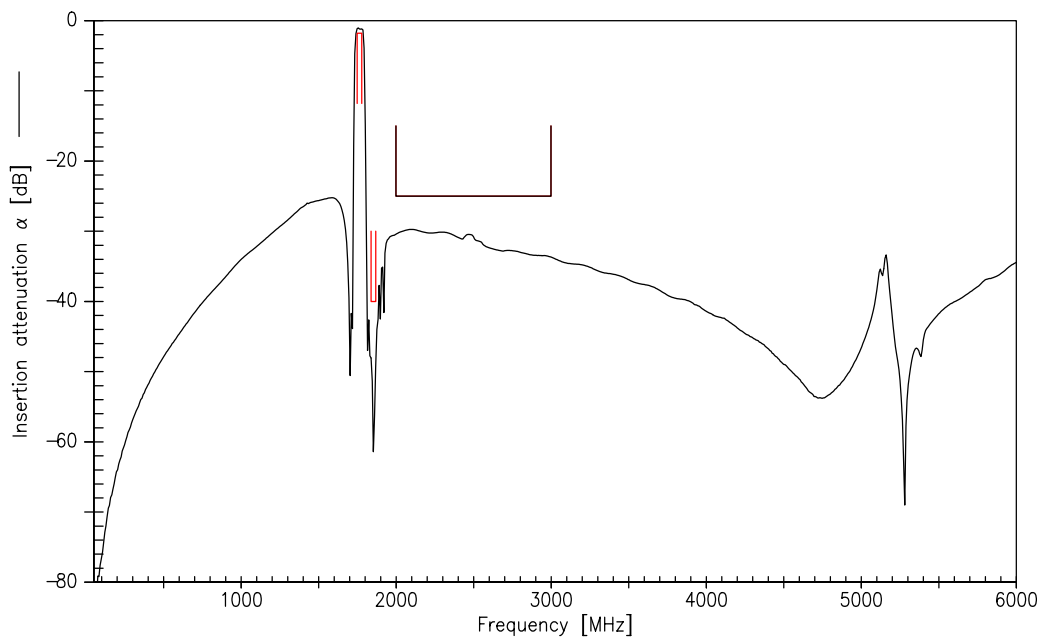
Data Sheet



Frequency Response TX-ANT



Frequency Response TX-ANT (wideband)





SAW Components

B7662

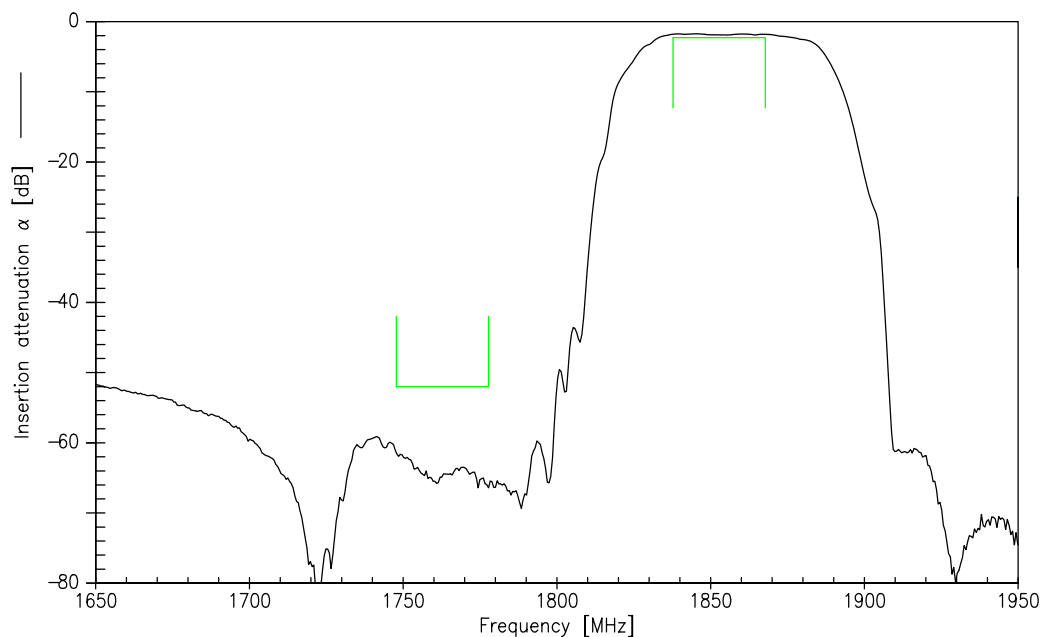
Low-Loss Filter for Mobile Communication

1765,0 / 1855,0 MHz

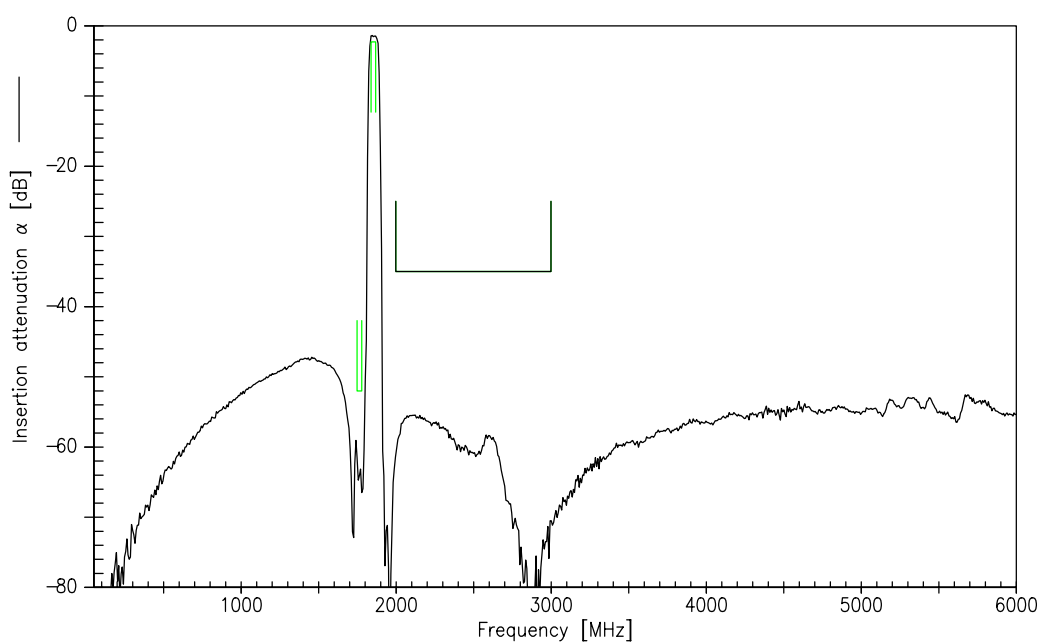
Data Sheet



Frequency Response RX-ANT



Frequency Response RX-ANT (wideband)





SAW Components

B7662

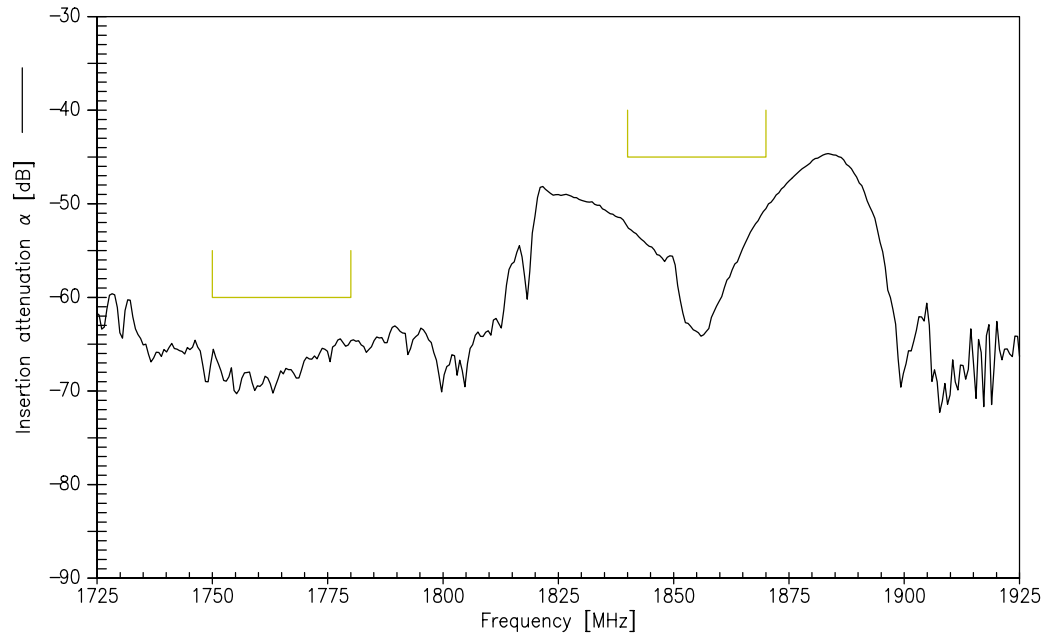
Low-Loss Filter for Mobile Communication

1765,0 / 1855,0 MHz

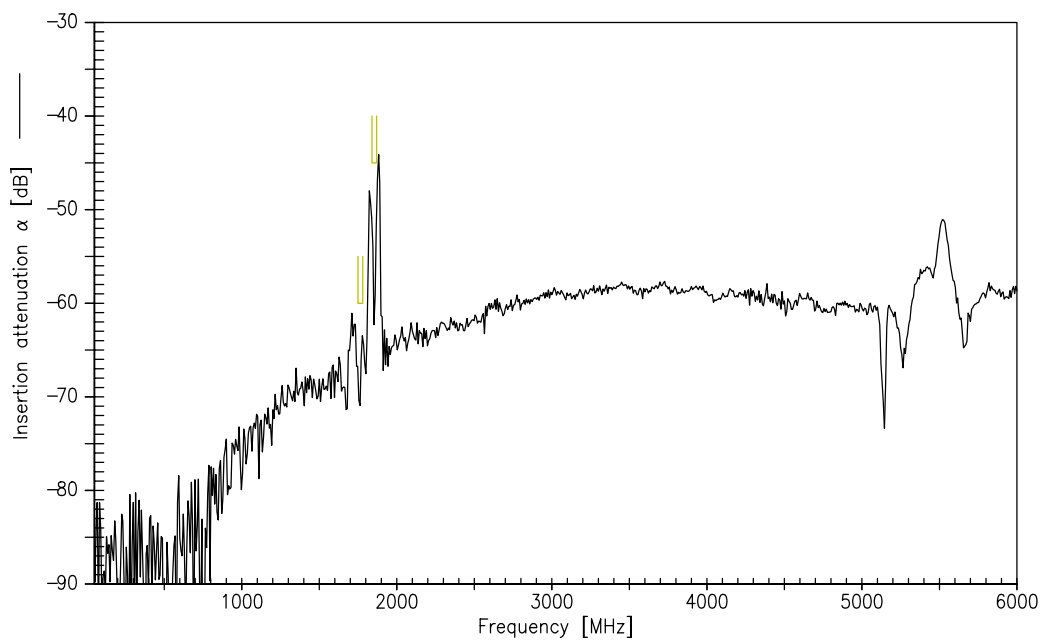
Data Sheet



Frequency Response TX-RX



Frequency Response TX-RX (wideband)





SAW Components

B7662

Low-Loss Filter for Mobile Communication

1765,0 / 1855,0 MHz

Data Sheet



Published by EPCOS AG

Surface Acoustic Wave Components Division, SAW MC WT

P.O. Box 80 17 09, 81617 Munich, GERMANY

© EPCOS AG 2004. Reproduction, publication and dissemination of this brochure and the information contained therein without EPCOS' prior express consent is prohibited.

Purchase orders are subject to the General Conditions for the Supply of Products and Services of the Electrical and Electronics Industry recommended by the ZVEI (German Electrical and Electronic Manufacturers' Association), unless otherwise agreed.

This brochure replaces the previous edition.

For questions on technology, prices and delivery please contact the Sales Offices of EPCOS AG or the international Representatives.

Due to technical requirements components may contain dangerous substances. For information on the type in question please also contact one of our Sales Offices.