

N - CHANNEL ENHANCEMENT MODE POWER MOS TRANSISTOR

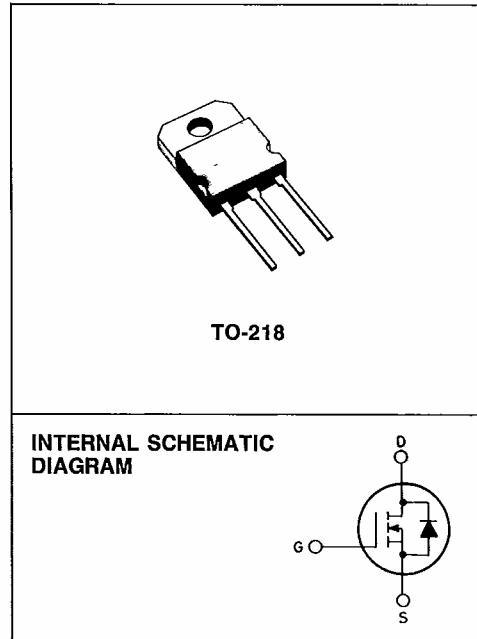
TYPE	V _{DSS}	R _{DS(on)}	I _D
SGSP477	200 V	0.17 Ω	20 A

- HIGH SPEED SWITCHING APPLICATIONS
- HIGH CURRENT - FOR TELECOMM POWER SUPPLIES
- ULTRA FAST SWITCHING
- EASY DRIVE FOR REDUCED COST AND SIZE

INDUSTRIAL APPLICATIONS:

- SWITCHING MODE POWER SUPPLIES
- MOTOR CONTROLS FOR ROBOTICS.

N - channel enhancement mode POWER MOS field effect transistor. Easy drive and very fast switching times make this POWER MOS transistor ideal for high speed switching applications. Typical applications include robotics, laser diode drives, UPS, SMPS and DC/DC converters, electric vehicle drives and a DC switch for telecommunications.


ABSOLUTE MAXIMUM RATINGS

V _{DS}	Drain-source voltage (V _{GS} = 0)	200	V
V _{DGR}	Drain-gate voltage (R _{GS} = 20 KΩ)	200	V
V _{GS}	Gate-source voltage	±20	V
I _D	Drain current (cont.) at T _c = 25°C	20	A
I _D	Drain current (cont.) at T _c = 100°C	13	A
I _{DM} (*)	Drain current (pulsed)	80	A
I _{DLM} (*)	Drain inductive current, clamped	80	A
P _{tot}	Total dissipation at T _c < 25°C	150	W
	Derating factor	1.2	W/°C
T _{stg}	Storage temperature	-55 to 150	°C
T _j	Max. operating junction temperature	150	°C

(*) Pulse width limited by safe operating area

THERMAL DATA

查询"SGS477"供应商

$R_{\theta(jc)}$	Thermal resistance junction-case	max	0.83	$^{\circ}\text{C/W}$
T_L	Maximum lead temperature for soldering purpose		275	$^{\circ}\text{C}$

T-39-13

ELECTRICAL CHARACTERISTICS ($T_{\text{case}} = 25^{\circ}\text{C}$ unless otherwise specified)

Parameters	Test Conditions	Min.	Typ.	Max.	Unit
------------	-----------------	------	------	------	------

OFF

$V_{(BR)DSS}$	Drain-source breakdown voltage	$I_D = 250 \mu\text{A}$	$V_{GS} = 0$	200		V
I_{DSS}	Zero gate voltage drain current ($V_{GS} = 0$)	$V_{DS} = \text{Max Rating}$ $V_{DS} = \text{Max Rating} \times 0.8$	$T_c = 125^{\circ}\text{C}$		250 1000	μA μA
I_{GSS}	Gate-body leakage current ($V_{DS} = 0$)	$V_{GS} = \pm 20 \text{ V}$			± 100	nA

ON (*)

$V_{GS(th)}$	Gate threshold voltage	$V_{DS} = V_{GS}$	$I_D = 250 \mu\text{A}$	2		4	V
$R_{DS(on)}$	Static drain-source on resistance	$V_{GS} = 10 \text{ V}$ $V_{GS} = 10 \text{ V}$	$I_D = 10 \text{ A}$ $I_D = 10 \text{ A}$			0.17 0.34	Ω Ω

DYNAMIC

g_{fs}	Forward transconductance	$V_{DS} = 25 \text{ V}$	$I_D = 10 \text{ A}$	8			mho
C_{iss}	Input capacitance	$V_{DS} = 25 \text{ V}$ $V_{GS} = 0$	$f = 1 \text{ MHz}$		1900	2200	pF
C_{oss}	Output capacitance					550	pF
C_{rss}	Reverse transfer capacitance					260	pF

SWITCHING

$t_d(on)$	Turn-on time	$V_{DD} = 100 \text{ V}$ $V_I = 10 \text{ V}$	$I_D = 10 \text{ A}$		30	40	ns
t_r	Rise time		$R_l = 4.7 \Omega$		50	65	ns
$t_d(off)$	Turn-off delay time		(see test circuit)		110	145	ns
t_f	Fall time				35	45	ns

查询"SGSP477"供应商

Parameters	Test Conditions	Min.	Typ.	Max.	Unit
------------	-----------------	------	------	------	------

T-39-13

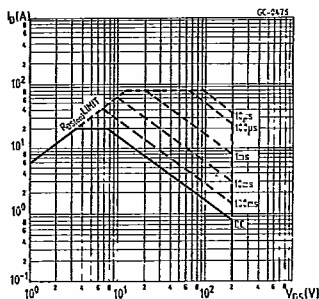
SOURCE DRAIN DIODE

I_{SD}	Source-drain current			20	A
$I_{SDM} (*)$	Source-drain current (pulsed)			80	A
V_{SD}	Forward on voltage	$I_{SD} = 20\text{ A}$	$V_{GS} = 0$	1.3	V
t_{rr}	Reverse recovery time	$I_{SD} = 20\text{ A}$ $di/dt = 100\text{ A}/\mu\text{s}$	$V_{GS} = 0$	320	ns

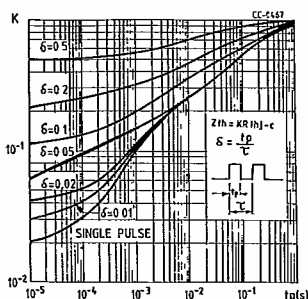
(*) Pulsed: Pulse duration = 300 μs , duty cycle 1.5%

(*) Pulse width limited by safe operating area

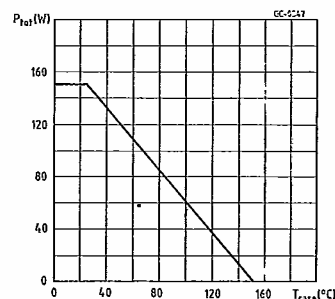
Safe operating areas



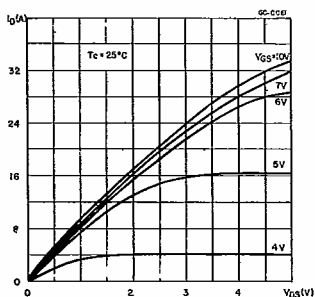
Thermal impedance



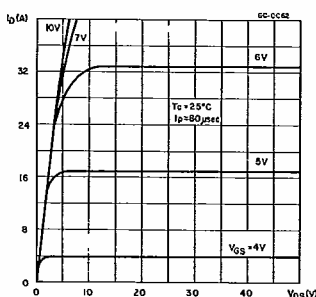
Derating curve



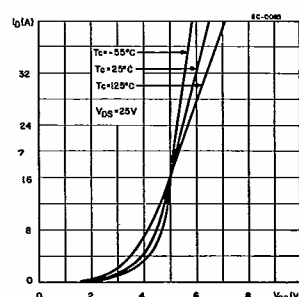
Output characteristics



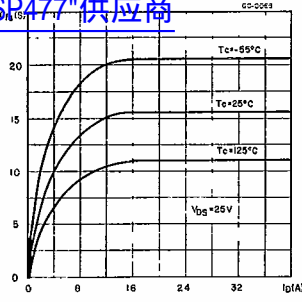
Output characteristics



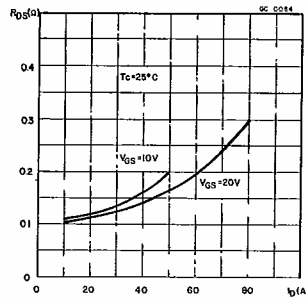
Transfer characteristics



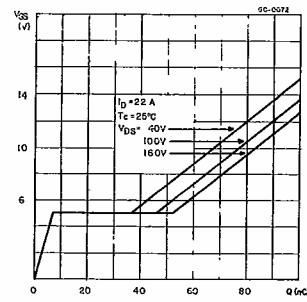
Transconductance



Static drain-source on resistance

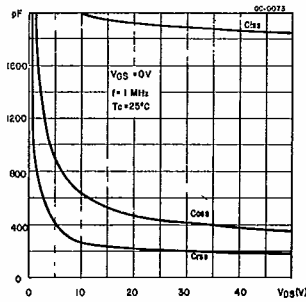


Gate charge vs gate-source voltage

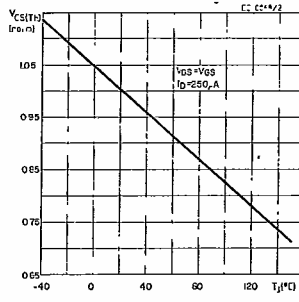


T-39-13

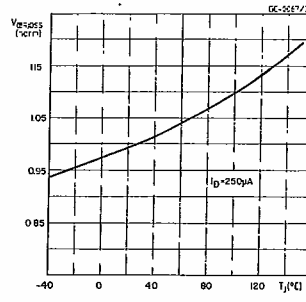
Capacitance variation



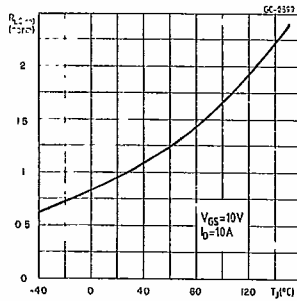
Normalized gate threshold voltage vs temperature



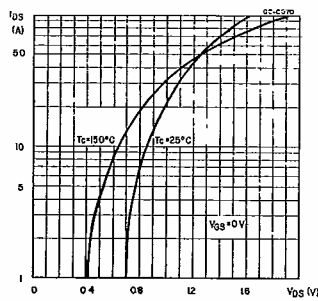
Normalized breakdown voltage vs temperature



Normalized on resistance vs temperature

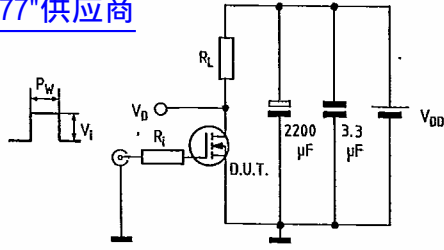


Source-drain diode forward characteristics



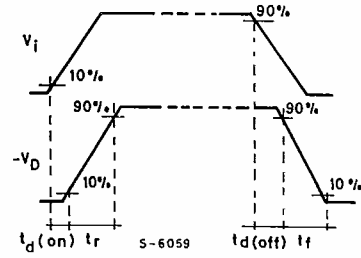
Switching times test circuit for resistive load

[查询"SGSP477"供应商](#)



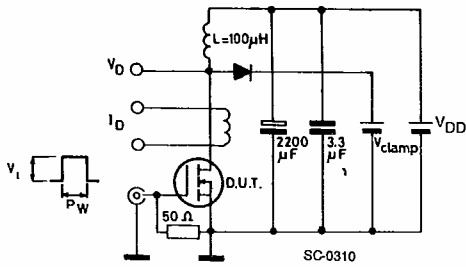
Pulse width $\leq 100 \mu\text{s}$
Duty cycle $\leq 2\%$

Switching time waveforms for resistive load



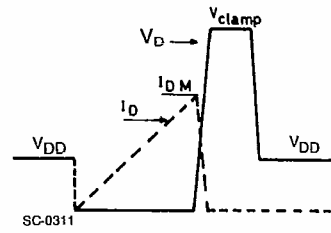
T-39-13

Clamped inductive load test circuit

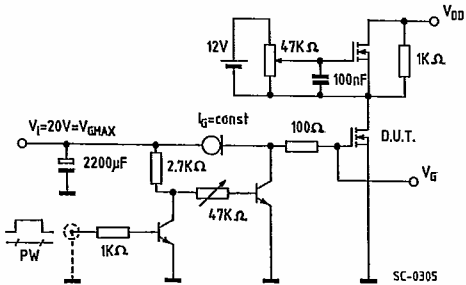


$V_i = 12 \text{ V}$ - Pulse width: adjusted to obtain specified I_{DM} , $V_{\text{clamp}} = 0.75 V_{(BR)}$ DSS.

Clamped inductive waveforms



Gate charge test circuit



PW adjusted to obtain required V_G

Body-drain diode t_{rr} measurement
Jedec test circuit

