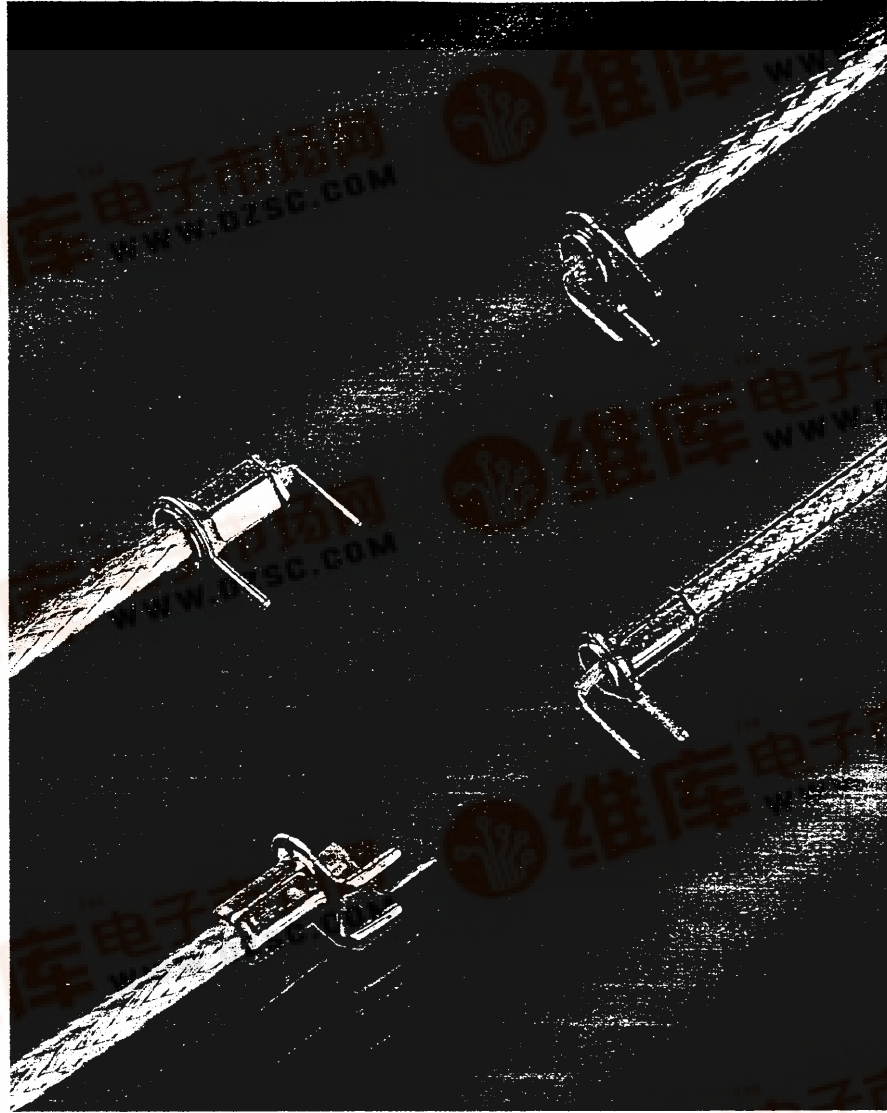


[查询"055-939-9029ARD"供应商](#)



---

## *Coaxial Terminators*

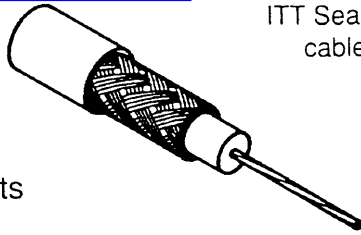
---

*An Inexpensive Solution to Cable Termination*

# COAXIAL TERMINATORS

[查询"055-939-9029ARD"供应商](#)

- \* Low cost
- \* Easy to assemble
- \* Only two piece parts
- \* Surface mount option
- \* No solder transfer down braid
- \* Good stability - two point fixing
- \* Variable pitch, 2.5mm - 10.0mm

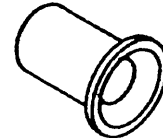
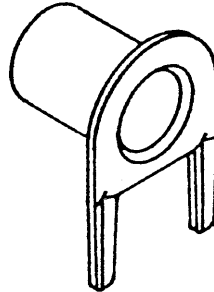


ITT Sealectro Coaxial Terminators provide a low cost means of cable junction to a printed circuit where engagement and disengagement are not required.

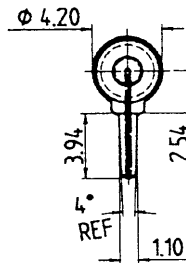
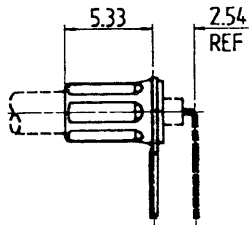
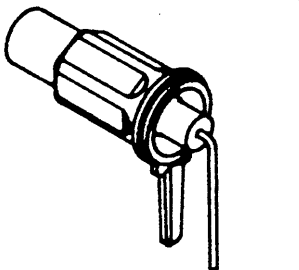
Styles are available for a variety of popular RG series cable types and cables of similar dimensions.

Other cable variants subject to availability.

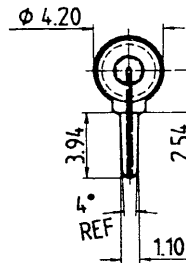
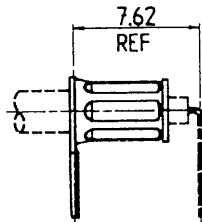
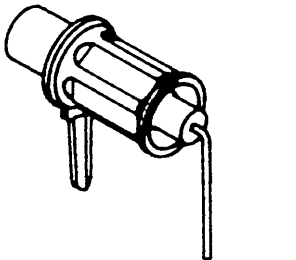
The tapered leg is an interference fit into the PCB hole enabling pre-assembly for wave soldering



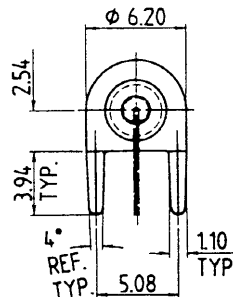
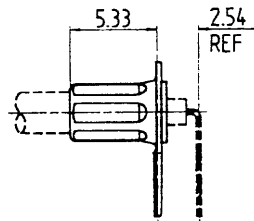
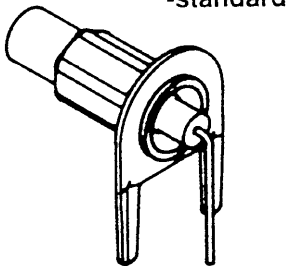
Single leg at front



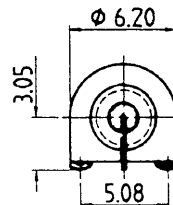
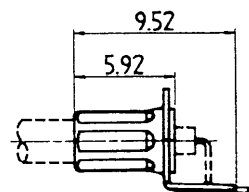
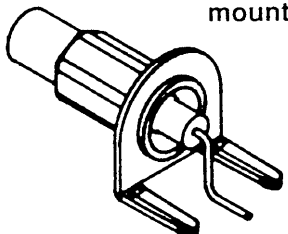
Single leg at rear



Two legs at front -standard



Two legs at front -surface & vertical mount



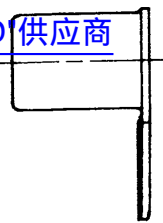
Part Number	Cable
055-939-9019AR0	RG178/U RG196/U
055-939-9029AR0	RG174/U RG179/U RG188/U RG316/U

Part Number	Cable
055-939-9039AR0	RG178/U RG196/U
055-939-9049AR0	RG174/U RG179/U RG188/U RG316/U

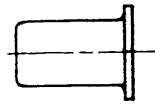
Part Number	Cable
055-939-9059AR0	RG178/U RG196/U
055-939-9069AR0	RG174/U RG179/U RG188/U RG316/U

# ASSEMBLY INSTRUCTIONS

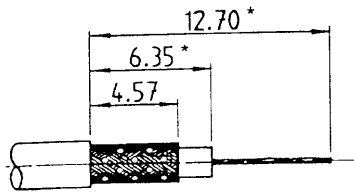
查询"055-939-9029ARD"供应商



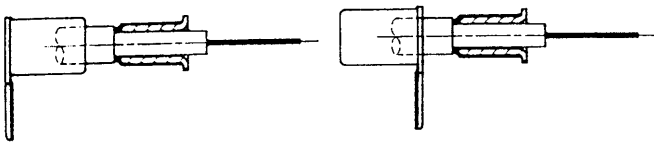
Tab ferrule



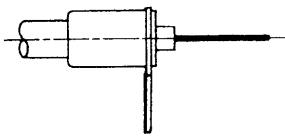
Crimp body



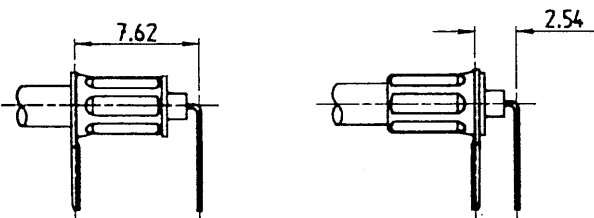
1) Trim cable to dimensions shown being careful not to nick or damage braids or centre conductor.  
Tin centre conductor.  
These dimensions suit 0.1" (2.5) and 0.3" (7.62) PCB pitches. For other pitches see Note 4.  
\* For vertical mount, trim to suit



2) Slide tab-ferrule over cable.  
(Note: Orientation of tab-ferrule is optional depending on mounting requirements)  
Flare braids and slide crimp body over cable dielectric until braids meet flange on crimp body

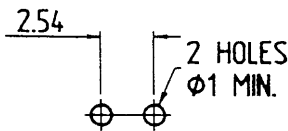


3) Slide tab-ferrule over braids to face of flange and crimp using crimp tool No. T1025/2 and dies:  
3.25 A/F Hex for RG174/U, RG179/U, RG188/U, RG316/U or  
2.67 A/F Hex for RG178/U and RG196/U

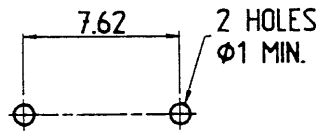


4) Bend centre conductor to dimension shown depending on preferred orientation.  
These dimensions suit 0.1" (2.5) and 0.3" (7.62) PCB pitches. For other pitches of 0.1" (2.5) multiples add 2.54 multiples to the 12.70 and 6.35 dimensions in the cable trimming instructions Note 4.

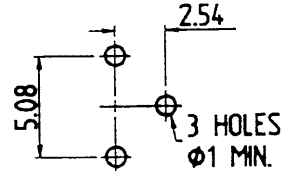
## MOUNTING HOLE DIMENSIONS



Single leg at front



Single leg at rear



Two legs at front  
Standard and vertical mount

ALL PARTS HAVE ELECTRO TIN FINISH

All dimensions are in millimetres and are nominal unless otherwise stated