

4

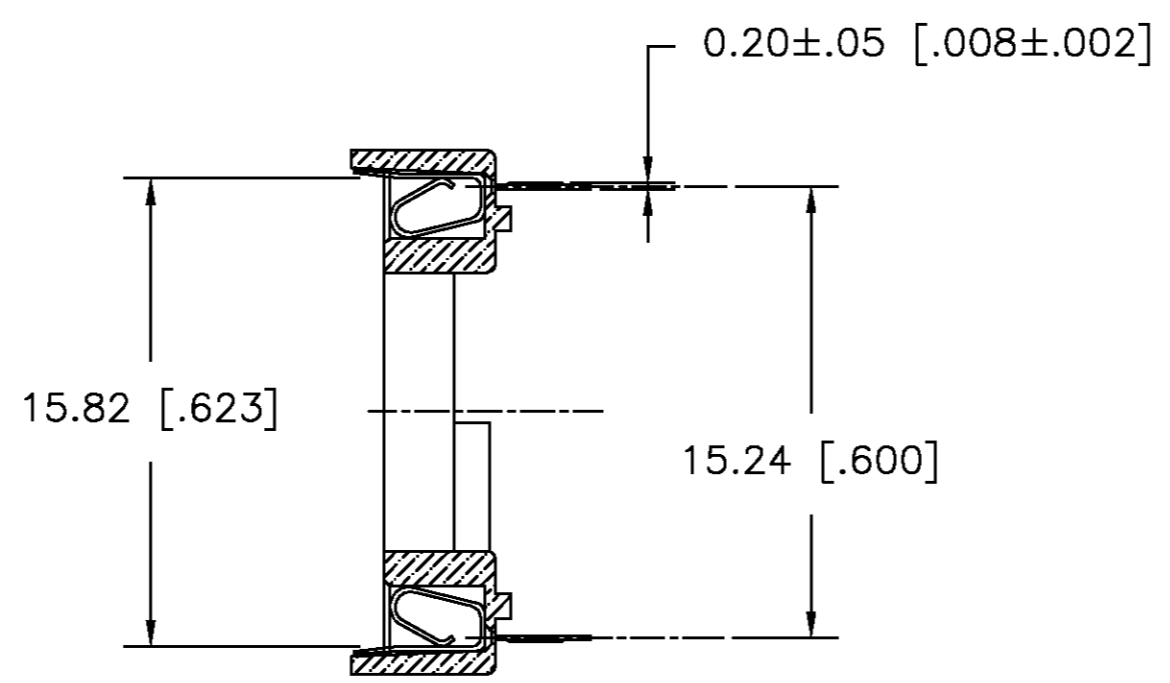
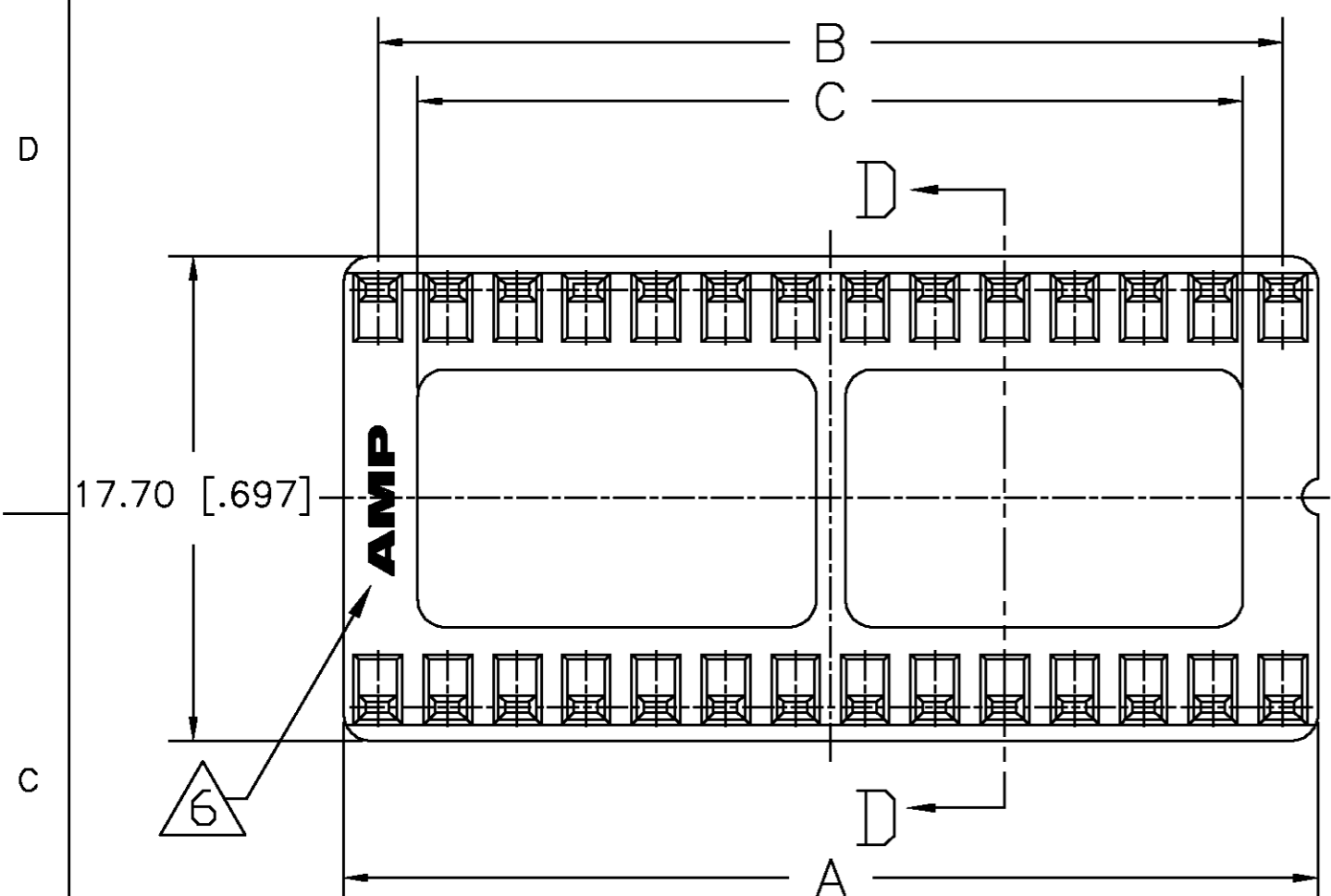
3

2

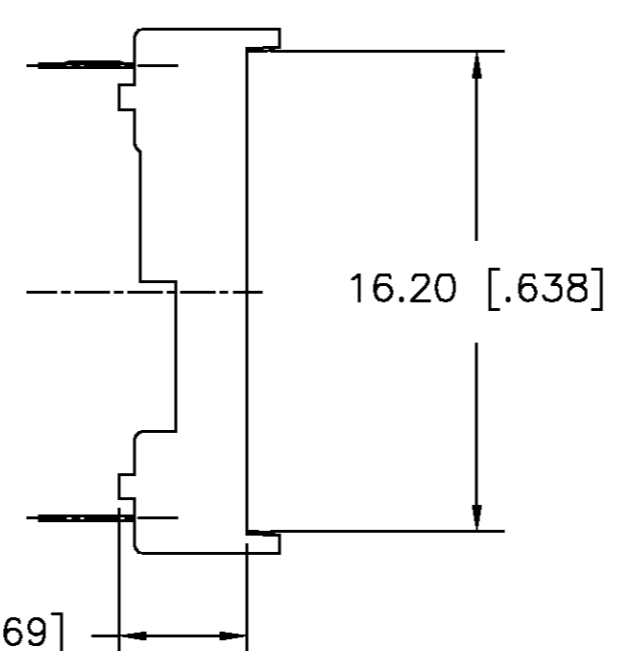
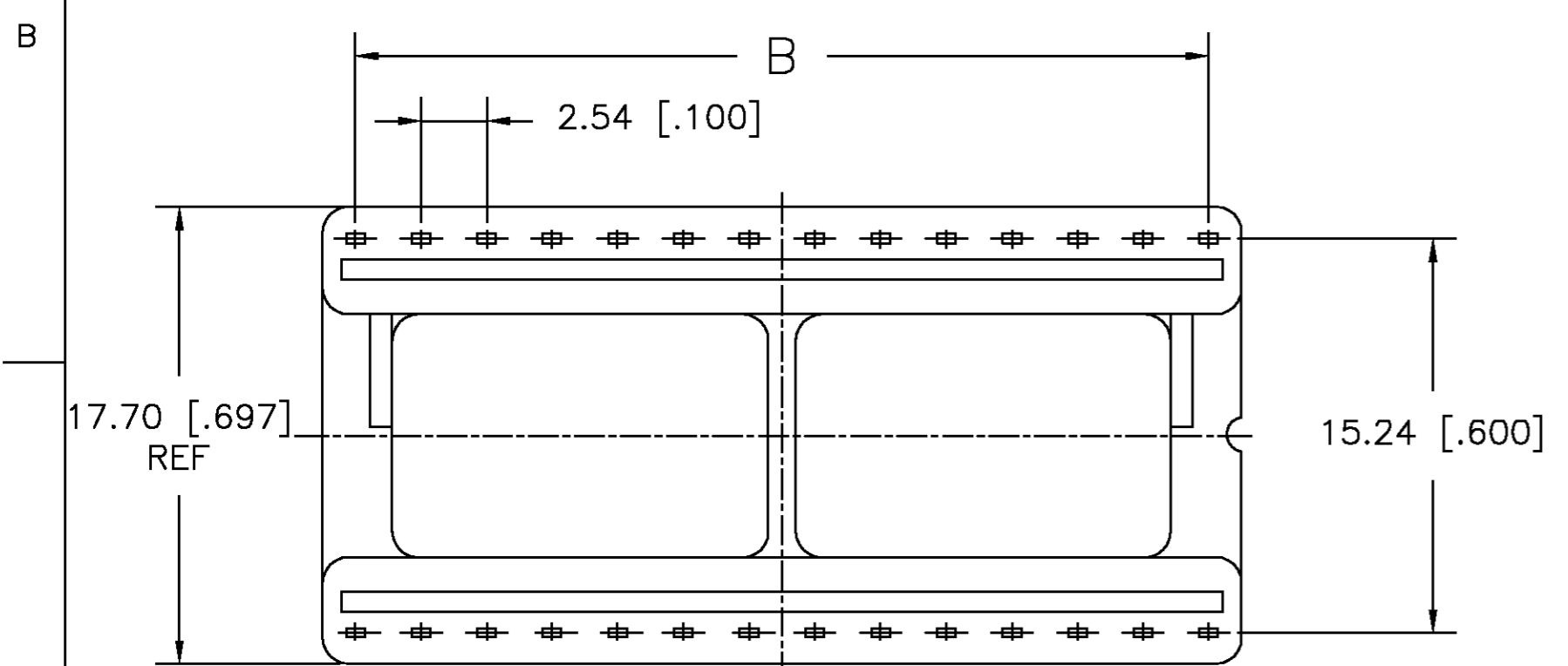
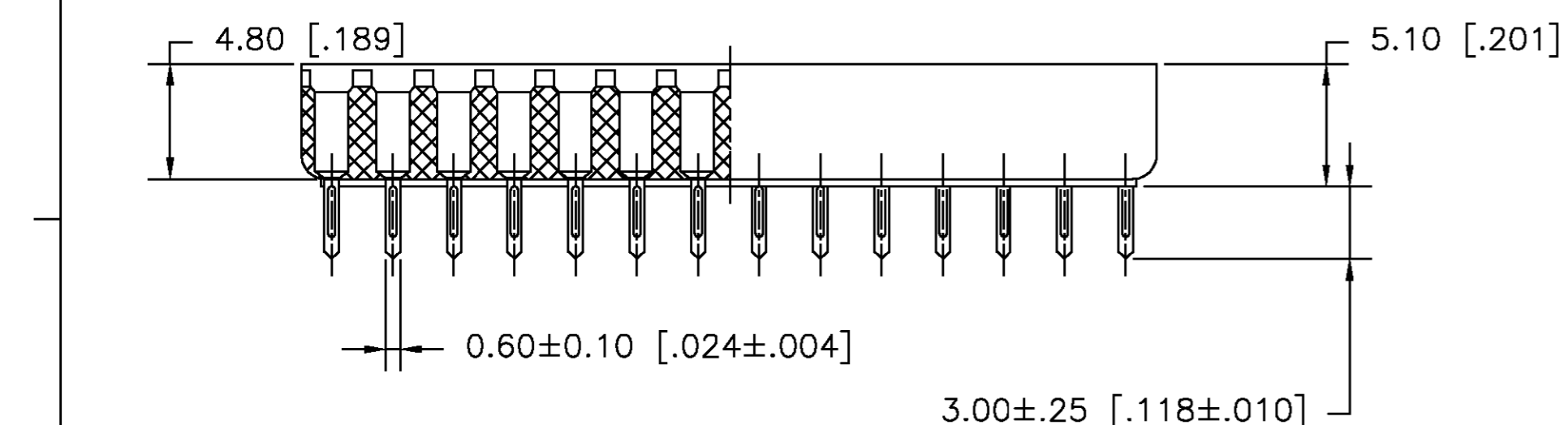
1

THIS DRAWING IS UNPUBLISHED. RELEASED FOR PUBLICATION .19
 BY AMP INCORPORATED. ALL RIGHTS RESERVED.

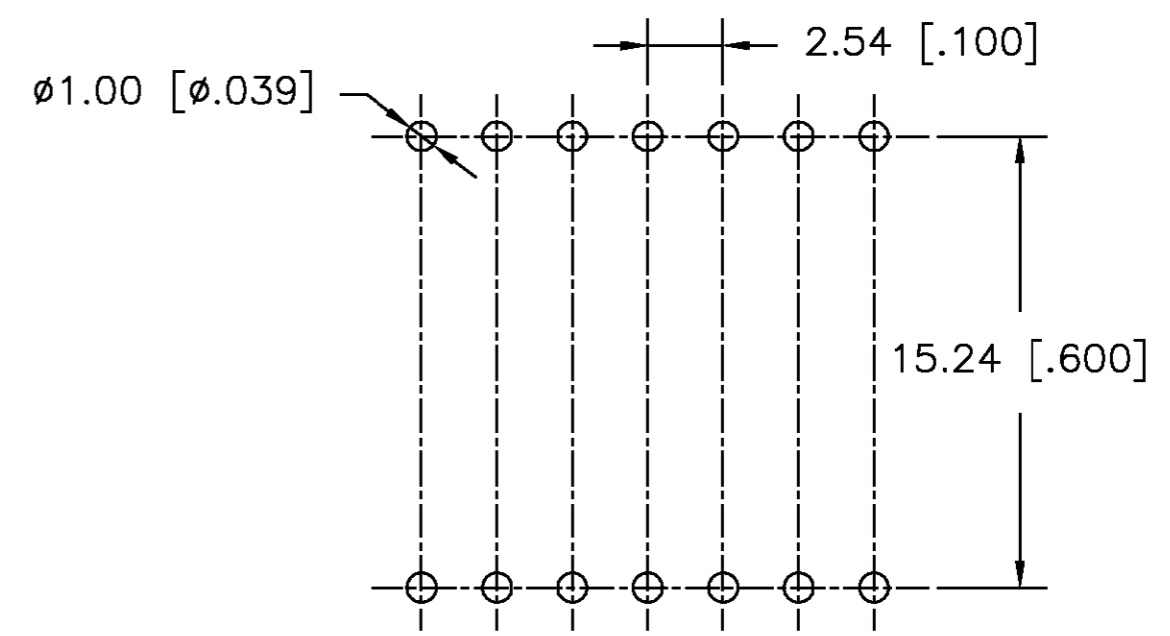
LOC		DIST		REVISIONS			
P	LTR	DESCRIPTION		DATE	DWN	APVD	
AG	86	C	REVISED PER 0G3C-0046-00	22MAR00	BH	HDW	



SECTION D-D



- 1 MATERIAL:
HOUSING: 25% GLASS FILLED PBT THERMOPLASTIC, BLACK.
CONTACT: PHOS BRONZE
- 2 FINISH: CONTACT PLATING: TIN-LEAD (60μ INCHES MIN.)
- 3. MECHANICAL SPECS:
DURABILITY: 50 CYCLES MIN.
INSERTION FORCE: 300 GRAMS MAX.
WITHDRAWAL FORCE: 20 GRAMS MIN.
CONTACT RETENTION: 500 GRAMS.
SOLDERABILITY: 95% COVERAGE MIN.
TEST TEMPERATURE = 230±5°C
TEST TIME = 5±.5 SEC.
ACCEPTS: .20-.30 (.008-.012) LEADS
- 4. ELECTRICAL SPECS:
CURRENT RATING: 1 AMPERE AC, DC
VOLTAGE RATING: 250V AC, DC
CONTACT RESISTANCE: 20 MILLIOHMS MAX.
INSULATION RESISTANCE: 1000 MEGOHMS MIN.
DIELECTRIC WITHSTANDING VOLTAGE: AC 1000 V MIN.
- 5. OPERATING TEMPERATURE: -40°C TO +105°C
- 6 AMP LOGO



POS	A±0.10 [.004]	B±0.10 [.004]	C±0.15 [.004]	PART NO.
24	30.48 [1.200]	27.94 [1.100]	25.10 [.988]	390262-1
28	35.56 [1.400]	33.02 [1.300]	30.12 [1.19]	390262-2
32	40.64 [1.600]	38.10 [1.500]	35.20 [1.39]	390262-3
40	50.80 [2.000]	48.26 [1.900]	45.36 [1.79]	390262-5
42	53.34 [2.100]	50.08 [1.97]	47.90 [1.89]	390262-6
48	60.96 [2.400]	58.42 [2.300]	55.52 [2.19]	390262-7

THIS DRAWING IS A CONTROLLED DOCUMENT. DWN: J. BURWELL 22MAR00
 CHK: S. RIDGILL 5-8-99

AMP AMP Incorporated
 Harrisburg Pa 17105-3608

DIP SOCKET, .600 CENTER LINE
 LADDER STYLE

SIZE	CAGE CODE	DRAWING NO	RESTRICTED TO
A2	00779	390262	-

CUSTOMER DRAWING SCALE 4:1 SHEET 1 OF 1 REV C

390262